

**Precision and flexibility**

- Proportional control of movements
- Hydrostatic transmission and inching pedal

Compact and versatile

- 5 m length
- Short turning radius
- Driving position reduces fatigue at work

Comfort and ergonomomy

- LMI easy to read with cut off dangerous movements
- Tilt corrector as standard
- Tilt corrector as standard
- Smart control 4 in 1 joystick



Placing height : 10 m

Maximum lift capacity :
3500 kg**Haulotte** 
GROUP

More than lifting



HTL 3510



TELEHANDLER

Haulotte

GROUP

Placing height : 10 m

Maximum lift capacity : 3500 kg



PERFORMANCES

Maximum lift capacity	3500 kg
Lift capacity to full height	2000 kg
Lift capacity at full reach	500 kg
Maximum fork height	10 m
Reach at maximum fork height	2.2 m
Maximum forward reach	7.2 m



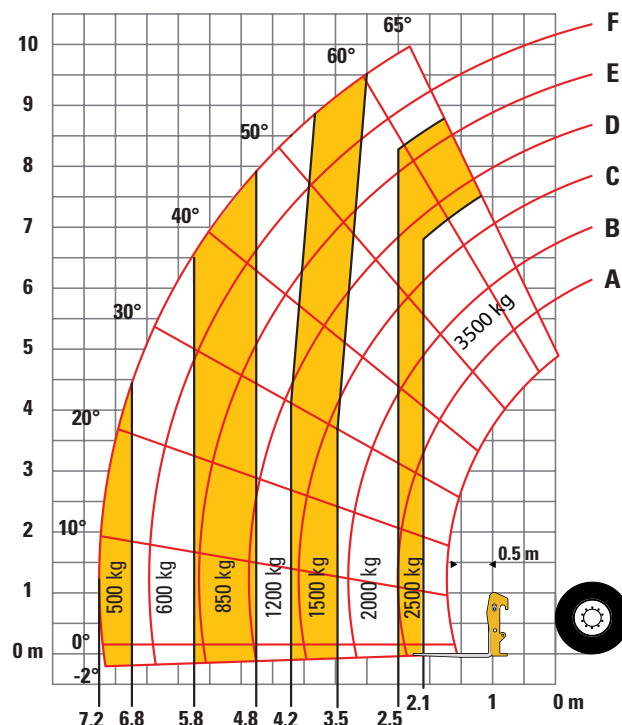
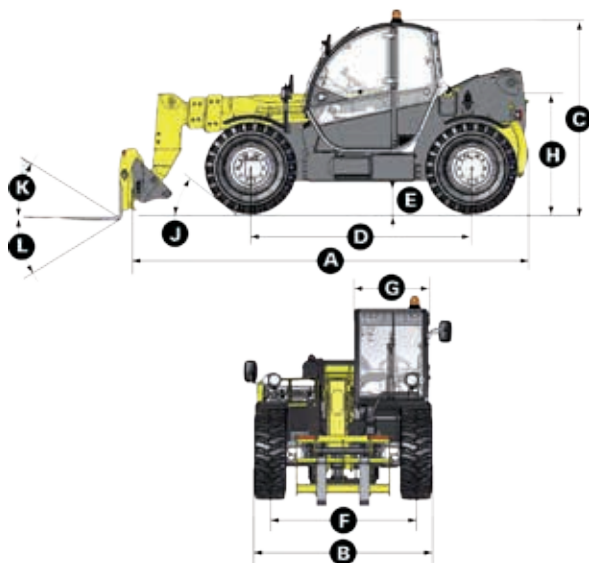
DIMENSIONS

A Length	4.96 m
B Width	2.26 m
C Height	2.42 m
D Wheelbase	2.78 m
E Ground clearance	42 cm
F Track width	1.88 m
G Cab width	0.96 m
H Height to high boom pivot	1.6 m
J Approach angle	30 °
K Upper rotation of forks	18 °
L Lower rotation of forks	104 °
Turning radius (outside wheels)	3.7 m
Weight with forks	8280 kg
Tyres type	405/70 - 24



ENGINE

	TIER III	TIER IV
Engine model	PERKINS	KOHLER
Engine Capacity	4400 cm3	3400 cm3
Engine power output	70 kW	55,4 kW
Engine torque	392 Nm	380 Nm
Transmission type	Hydrostatic	Hydrostatic
Fuel tank	120 l	120 l
Engine oil	7 l	15 l



STANDARD EQUIPMENT

- Heavy duty Hydrostatic transmission
- 4 wheel drive and steer
- Gear equipment pump
- Proportional controls for movement of boom/telescopic arm/excavation and accessories
- Safety valves on hydraulic jacks
- Auxilliary hydraulic ports
- Overload/dangerous movements cut out switch
- Tilt corrector: +/- 10 °
- ROPS/FOPS cabin with heating and ventilation
- Backlighted e-tronic dashboard

OPTIONS AND ACCESSORIES

- Cold Weather Package
- Biodegradable oil
- Cold environment oil
- Hot environment oil
- Air conditioning
- Working lights
- Buckets
- Jibs
- Electrically hydraulic controls

