



Performance & Productivity

- Very good working envelop
- Vertical arm rise - Basket remains parallel to wall
- Outstanding RT capabilities
- basket load capacity 250 kg
- Dual load 250-350 kg (option)

Safety and Comfort

- Quick, proportional and simultaneous movements
- Activ' Lighting System safe load
- Haulotte Activ' Shield Bar

Maximized Total Cost of Ownership

- Haulotte Activ' Screen on board diagnostic tool
- Haulotte Stop Emission System wich automatically turns off & on the engine
- Easy access to all components
- Large modular basket, quick and easy to repair

Haulotte ➤



HA26 RTJ PRO

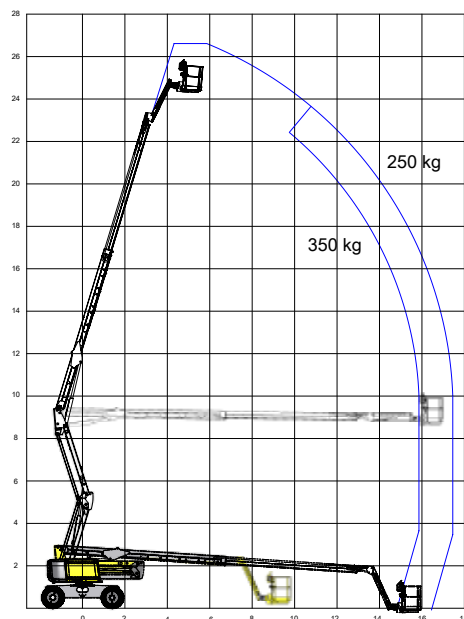
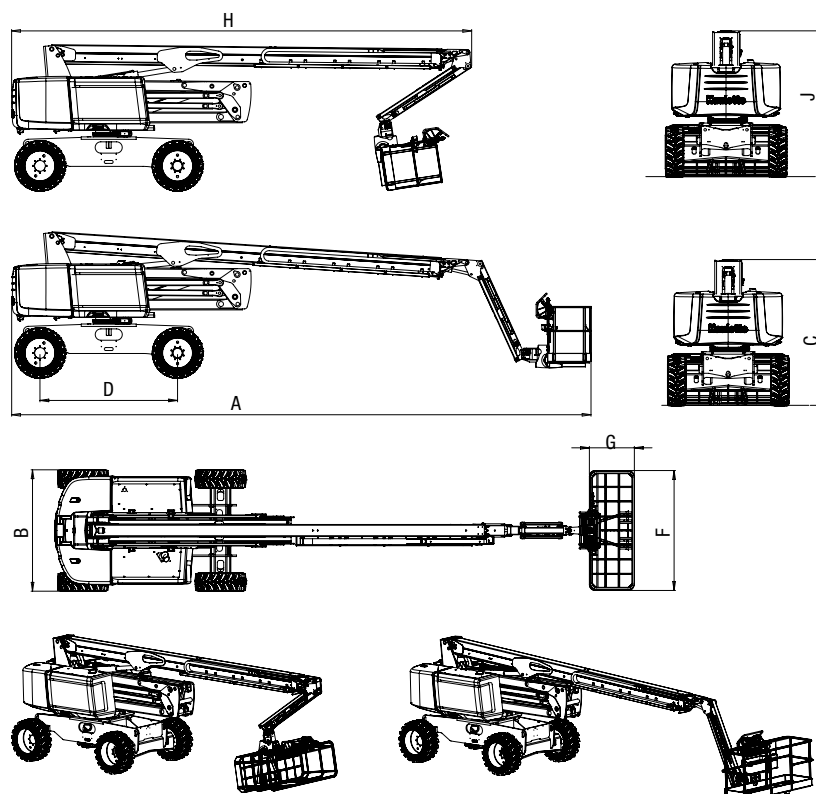
ROUGH TERRAIN ARTICULATED BOOMS

Haulotte

TECHNICAL DATA

HA26 RTJ PRO

Working height	26.4 m
Platform height	24.4 m
Horizontal outreach	17.5 m
Up and over clearance	9.3 m
Lift capacity	250 kg
F x G Platform size	2.44 x 0.91 m
A Length - stowed	11.8 m
B Width	2.48 m
C Height - stowed	2.97 m
H Transport length	9.4 m
J Transport height	2.98 m
Vertical jib rotation	133° (-65°/+68°)
Platform rotation	180 °
Turntable rotation	360° continuous
Tailswing	0.76 m
D Wheelbase	2.8 m
Ground clearance	48 cm
Tilt	4 °
Drive speed	5 km/h
Gradeability	45 %
Tires - solid rough terrain	385/65-22,5
Turning radius - outside	4.35 m
Power source	Kubota Tier 3 - 36.5 kW - variable speed
Weight	15 500 kg



STANDARD EQUIPMENT

- 4 wheel drive, 4 wheel steer
- Front oscillating axle
- Automatic differential wheel lock
- 250 kg / 550 lbs (2 persons) load capacity unrestricted working envelop
- Activ' Lighting System, Safe load
- 4 simultaneous movements
- Activ' Screen: embedded diagnostic system on lower control box, with color screen
- Stop Emission System : automatic engine stop system
- Large modular Haulotte basket 2.44 m x 0.91m
- Drop bar entry gate
- Upper control box cover
- Tool tray
- Swing out engine tray
- Low fuel level indicator (upper control box), fuel gauge (lower control box).
- AC power to platform (110 / 230V)
- Engine pre-heater with light indicator
- 12V battery / electrical control system
- Activ' Shield Bar 2.0 (standard only for Europe, North and South America)
- Electric pump system and emergency descent
- Sound and light alarm for tilt and load
- Travel alarm
- Rotating beacon
- Universal telematics plug

OPTIONS AND ACCESSORIES

- Dual load capacity 250 / 350 kg (restricted)
- Lateral swing door entry gate
- Hydraulic generator 3.5 kW or 6.5 kW
- Power to platform (female plug in the basket)
- Air-line to platform
- Glazier pack
- Pipe cradle pack
- Working light
- Biodegradable hydraulic oil
- Cold weather kit -20° / Arctic weather kit -25°C
- Hydraulic oil cooler
- Non marking tires
- Battery circuit breaker