

SELF-PROPELLED MAST LIFTS

PARTS MANUAL

(For MV095J)



WARNING

THE MANUFACTURER SHALL NOT BE HELD LIABLE IN CASE OF FAULTS OR ACCIDENTS DUE TO NEGLIGENCE, INCAPACITY, INSTALLATION BY UNQUALIFIED TECHNICIANS AND IMPROPER USE OF THE MACHINE

DO NOT OPERATE THIS MACHINE UNTIL YOU READ AND UNDERSTAND ALL THE DANGERS, WARNINGS AND CAUTIONS IN THIS MANUAL

Part Number: SM0518211A_Rev1.0

Zhejiang Dingli Machinery Co., Ltd.

First Edition, December 2018 Printing

Version of the Record

Version Number

Create Date

SM01518211A_Rev1.0 2018-10

Table of Contents

Section 1 Chassis

101.1	Chassis Covers Installation	2
102.1	Chassis Assembly	4
103.1	Steer Linkage and Wheels Assembly	7
104.1	Pothole Protection Assembly.....	10

Section 2 Turntable

201.1	Turntable and Chassis Installation.....	14
202.1	Turntable Covers Installation	17
203.1	Turntable Assembly	19
204.1	Right Accessory Assembly	22
205.1	Hydraulic Power Unit Assembly.....	23
206.1	Hydraulic Power Unit.....	24
207.1	Emergency Lowering Manifold	25
208.1	Left Accessory Assembly.....	26
209.1	Ground Control Box Assembly	29

Section 3 Mast

301.1	Mast Assembly	33
302.1	Mast 1 Assembly	35
303.1	Mast 2 Assembly	37
304.1	Wire Rope Assembly.....	39
305.1	Mast 3 Assembly	40
306.1	Mast 4 Assembly	42
307.1	Mast 5 Assembly	44
308.1	Mast 6 Assembly	46
309.1	Lifting Chain Assembly	48
310.1	(2-4) Mast Pulley Assembly.....	50
311.1	(4-6) Mast Pulley Assembly	51
312.1	(1-3) Mast Pulley Assembly.....	52
313.1	(3-5) Mast Pulley Assembly.....	53

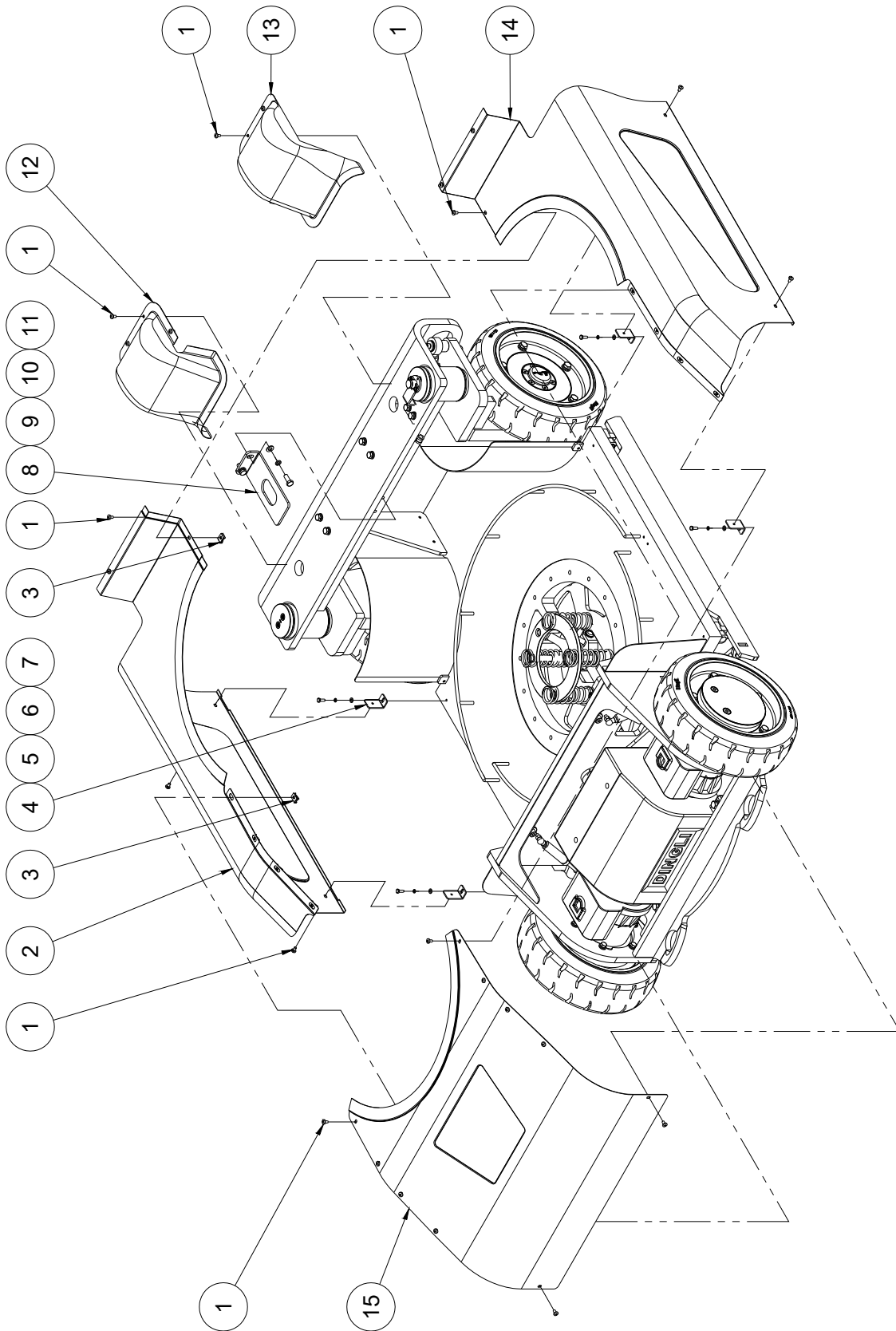
Section 4 Platform

401.1	Platform and Mast Installation	55
402.1	Platform and Jib Assembly	56
403.1	Jib Assembly	57
404.1	Platform Assembly.....	60

405.1	Platform Control Box Assembly.....	62
406.1	Anti Collision Device (Option)	64
407.1	Anti Crush Device 1(Option)	66
408.1	Anti Crush Device 2(Option)	68
Section 5 Hydraulic System		
501.1	Lift Cylinder Assembly.....	71
502.1	Jib Cylinder Assembly.....	73
503.1	Hydraulic Hoses and Fittings	75
Section 6 Electrical System		
601.1	Electrical Harness	78
602.1	Power to Platform	81
Section 7 Decal		
701.1	Decal.....	84

Section 1 Chassis

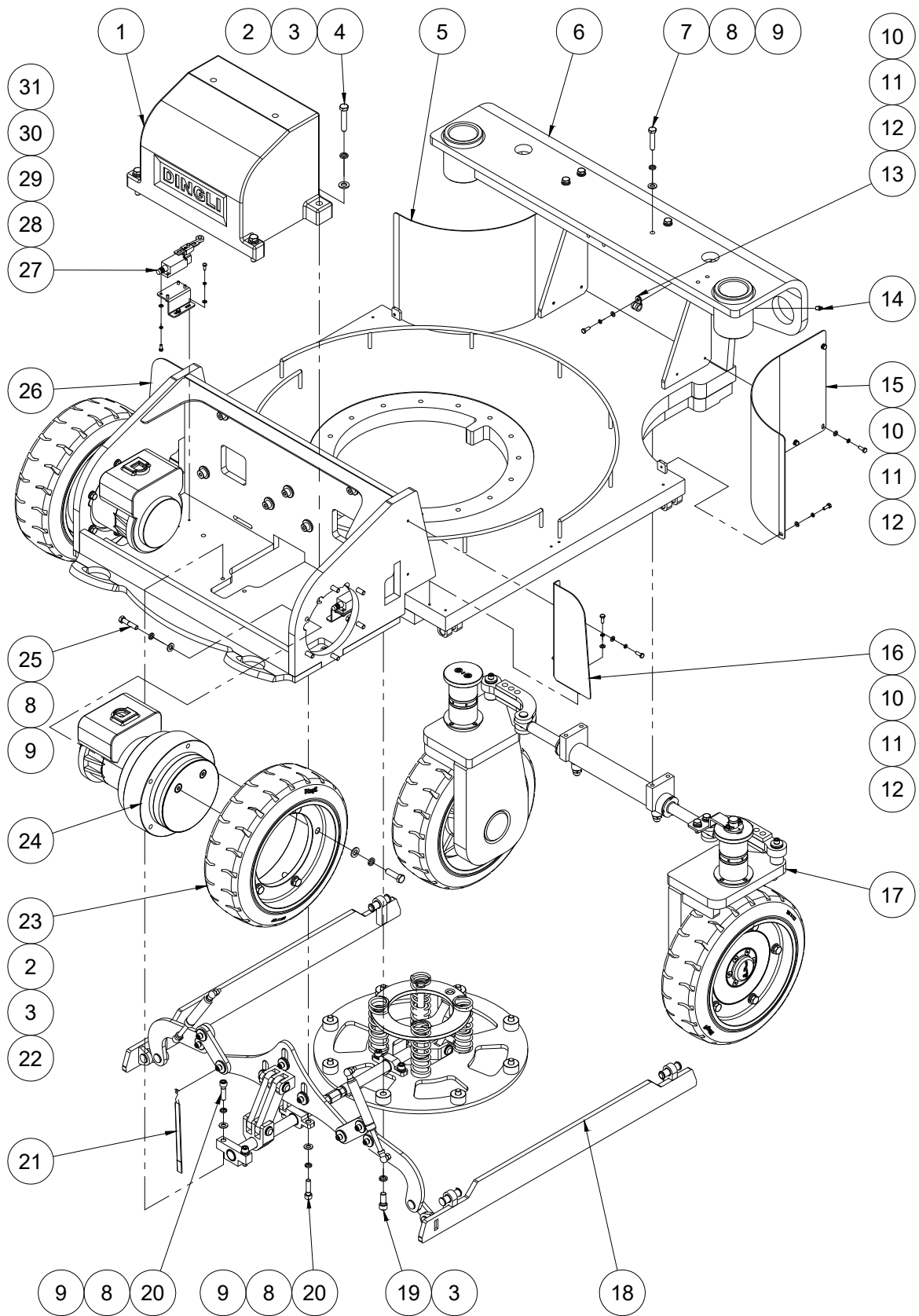
101.1 Chassis Covers Installation



101.1 Chassis Covers Installation

Item	Part No.	Description	Qty.
1	00005168	Screw GB/T 818 M6×10 - H	25
2	10006089	Left cover	1
3	50000112	Nut	9
4	10006101	Cover bracket	4
5	00000818	Bolt GB/T 5783 M6×16	4
6	00000621	Washer GB/T 93 6	4
7	00000620	Washer GB/T 97.1 6	4
8	10006100	Cover bracket	1
9	00000678	Bolt GB/T 5783 M10×25	2
10	00000679	Washer GB/T 93 10	2
11	00000615	Washer GB/T 97.1 10	2
12	10006078	Cover	1
13	10006079	Cover	1
14	10006090	Right cover	1
15	10006091	Middle cover	1

102.1 Chassis Assembly



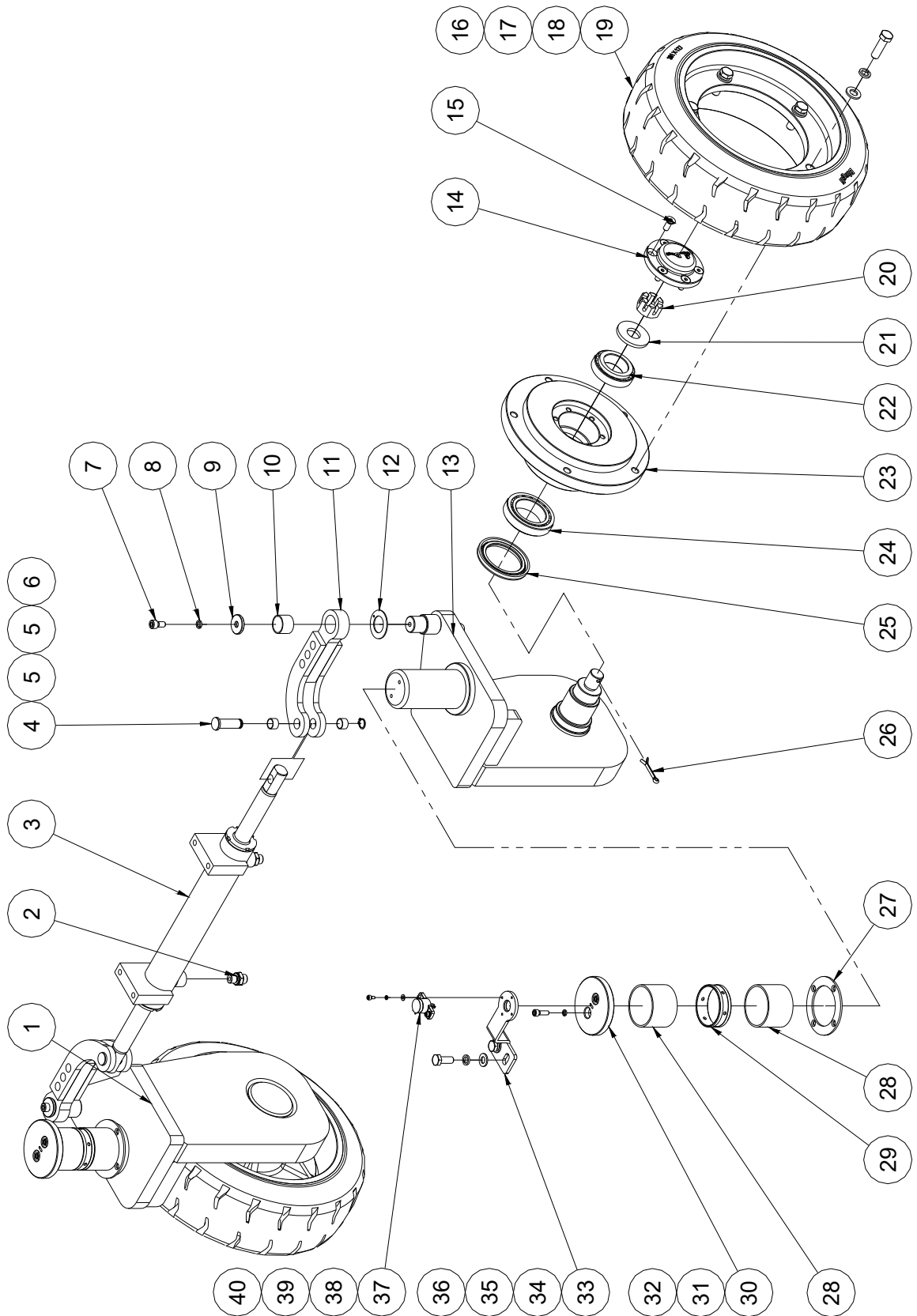
102.1 Chassis Assembly

Item	Part No.	Description	Qty.
1	10006096	Counterweight	1
2	00000814	Washer GB/T 97.1 12	14
3	00000815	Washer GB/T 93 12	22
4	00002453	Bolt GB/T 5783 M12×60	4
5	10006095	Rear baffle plate	1
6	10006001	Frame weldment	1
7	00001052	Bolt GB/T 5783 M10×50	4
8	00000679	Washer GB/T 93 10	20
9	00000615	Washer GB/T 97.1 10	20
10	00000620	Washer GB/T 97.1 6	15
11	00000621	Washer GB/T 93 6	15
12	00000818	Bolt GB/T 5783 M6×16	15
13	10005722	Clamp	1
14	00004482	Grease nipple GB/T 1152 M8×1	2
15	10006094	Rear baffle plate	1
16	10006098	Front baffle plate	1
17		Steer linkage and wheels assembly (refer to 103.1)	1
18		Pothole protection assembly (refer to 104.1)	1
19	00005019	Screw DIN 912 M12×30×1.5-12.9	8
20	00002050	Screw GB/T 70.1 M10×40	4
21	10000487	Ground strap	1
22	00005011	Bolt GB/T 5786 M12×1.5×40	10
23	10006041	Wheel	2
24	00005293	Drive motor assembly	2
--	00002022	Reducer	1
--	00005292	Motor	1
--	00002023	Brake	1
25	00005062	3/8-24×1 3/4" Bolt ANSI B18.2.1	12
26	10006099	Front baffle plate	1

102.1 Chassis Assembly

Item	Part No.	Description	Qty.
27	00002354	Limit switch	2
28	10006097	Switch bracket	2
29	00000605	Washer GB/T 97.1 5	12
30	00000606	Washer GB/T 93 5	12
31	00002246	Bolt GB/T 5783 M5×12	12

103.1 Steer Linkage and Wheels Assembly



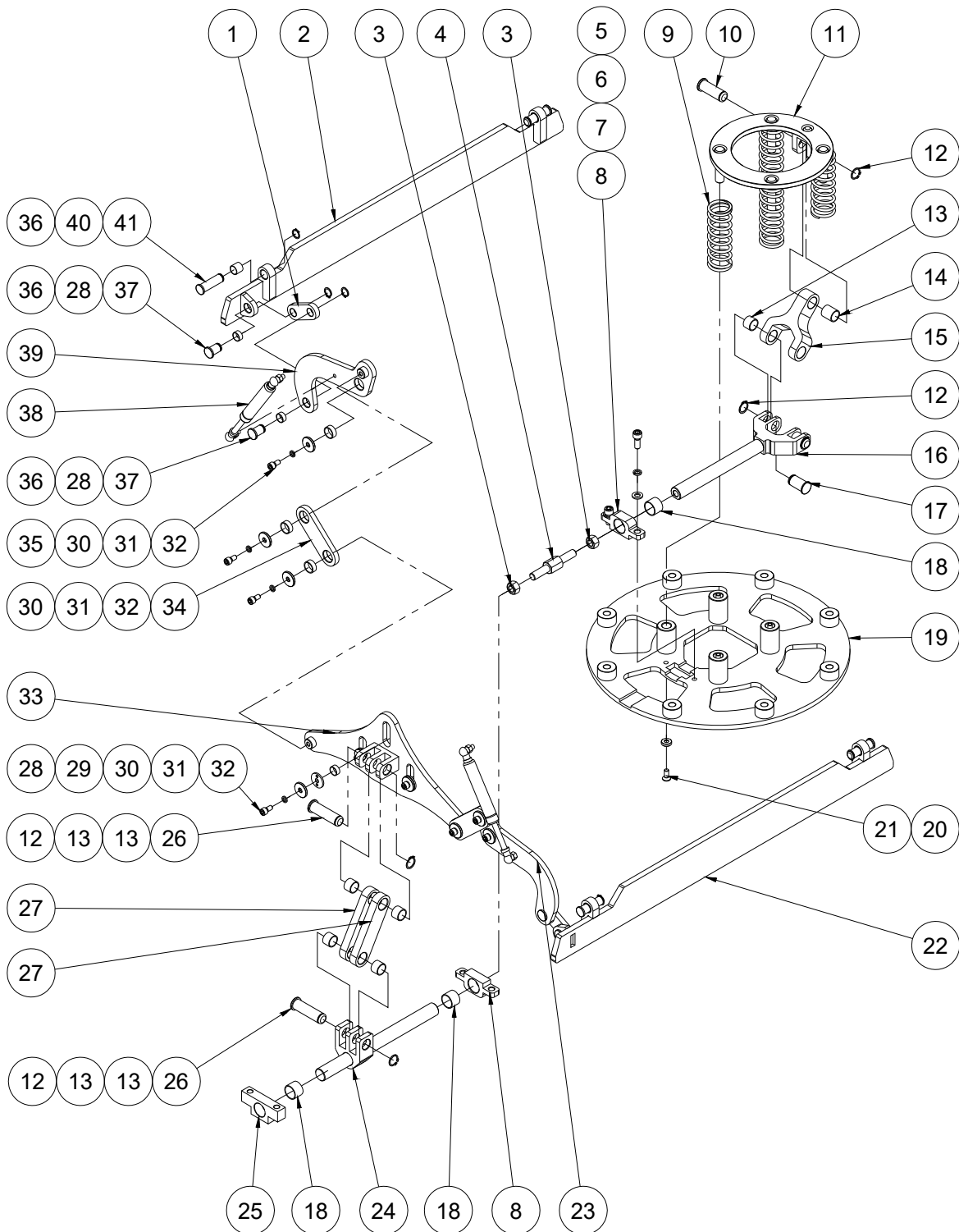
103.1 Steer Linkage and Wheels Assembly

Item	Part No.	Description	Qty.
1	10006029	Steer yoke weldment	1
2	00001316	Straight fitting	2
3	10005806	Steer cylinder (without seal kit)	1
--	00005085	Seal kit	1
4	00005079	892-14040 Pin	2
5	00000348	8812-141610 Bearing	4
6	00000980	Circlips GB/T 894.1-14	2
7	00002051	Screw GB/T 70.1 M8×16	2
8	00000609	Washer GB/T 93 8	2
9	10004920	Washer	2
10	00000368	8812-252820 Bearing	2
11	10006031	Tie rod weldment	2
12	00000384	8832-26 Bearing	1
13	10006022	Steer yoke weldment	1
14	10000638	Cap	2
15	00000765	Screw GB/T 70.3 M8×20	12
16	00005011	Bolt GB/T 5786 M12×1.5×40	10
17	00000815	Washer GB/T 93 12	10
18	00000814	Washer GB/T 97.1 12	10
19	10006041	Wheel	2
20	00001884	Nut GB/T 9459 M22×1.5	2
21	10000637	Washer	2
22	00001147	Bearing 32008 GB/T 297	2
23	10006040	Connection plate	2
24	00001148	Bearing 32010 GB/T 297	2
25	00005012	Seal GB/T 13871.1 FB 60 85 8 III	2
26	00001888	Cotter pin GB/T 91 5×40	2
27	00005049	8831-6203 Bearing	2
28	00005047	8812-606545 Bearing	4

103.1 Steer Linkage and Wheels Assembly

Item	Part No.	Description	Qty.
29	10006035	Spacer sleeve	2
30	10006034	Cover	2
31	00000621	Washer GB/T 93 6	4
32	00000774	Screw GB/T 70.1 M6×20	4
33	10006037	Sensor bracket	1
34	00000615	Washer GB/T 97.1 10	2
35	00000679	Washer GB/T 93 10	2
36	00000678	Bolt GB/T 5783 M10×25	2
37	00005018	Rotary sensor	1
38	00000778	Washer GB/T 97.1 4	2
39	00000779	Washer GB/T 93 4	2
40	00001987	Screw GB/T 70.1 M4×8	2

104.1 Pothole Protection Assembly



104.1 Pothole Protection Assembly

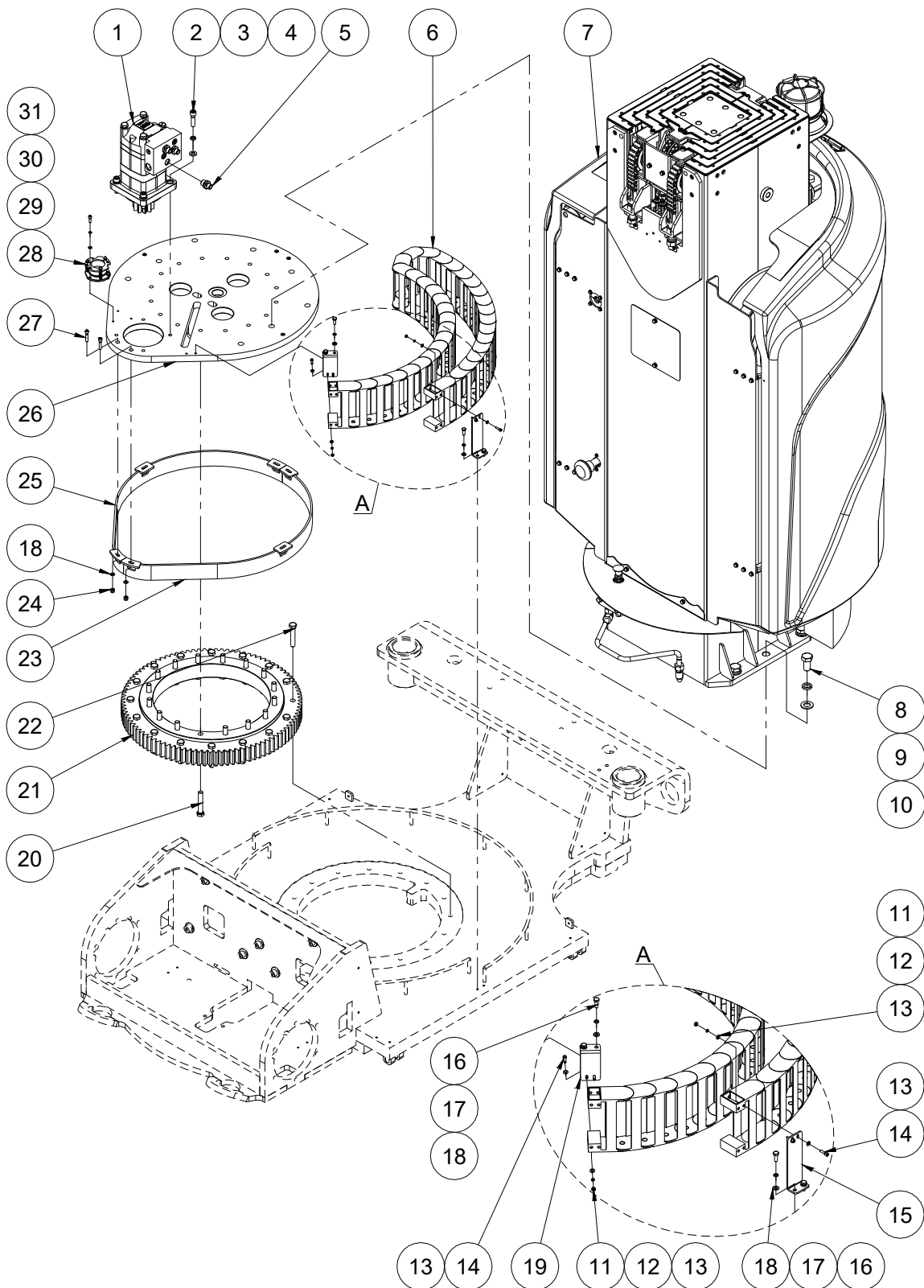
Item	Part No.	Description	Qty.
1	10006072	Pothole link plate	2
2	10006049	Pothole guard weldment	1
3	00004994	Nut GB/T 6170 M14	2
4	10006073	Adjusting screw	1
5	00002504	Screw GB/T 70.1 M10×25	2
6	00000679	Washer GB/T 93 10	2
7	00000615	Washer GB/T 97.1 10	2
8	10006071	Rod bracket	2
9	10006080	Spring	4
10	00005073	892-20051 Pin	1
11	10006058	Pothole hole pusher plate	1
12	00000926	Circlips GB/T 894.1-20	5
13	00005029	8812-202316 Bearing	6
14	00000360	8812-202325 Bearing	1
15	10006074	Clevis yoke	1
16	10006062	Connection rod weldment	1
17	00005074	892-20033 Pin	2
18	00000368	8812-252820 Bearing	3
19	10006054	Pothole hole pusher bracket	1
20	10006075	Washer	4
21	00000765	Screw GB/T 70.3 M8×20	4
22	10006045	Pothole guard weldment	1
23	10006050	Linkage weldment	1
24	10006065	Connection rod weldment	1
25	10006082	Rod bracket	1
26	00005076	892-20065 Pin	2
27	10006083	Pothole link plate	2
28	00000350	8812-161808 Bearing	7
29	00005111	8831-0803 Bearing	3

104.1 Pothole Protection Assembly

Item	Part No.	Description	Qty.
30	10004920	Washer	9
31	00000609	Washer GB/T 93 8	9
32	00002051	Screw GB/T 70.1 M8×16	9
33	10006068	Linkage weldment	1
34	10006077	Pothole link plate	2
35	00000356	8812-202309 Bearing	6
36	00000930	Circlips GB/T 894.1-16	8
37	00005075	892-16021 Pin	4
38	10000038	Gas shock	2
39	10006053	Linkage weldment	1
40	00005028	8812-161816 Bearing	4
41	00005077	892-16050 Pin	4

Section 2 Turntable

201.1 Turntable and Chassis Installation



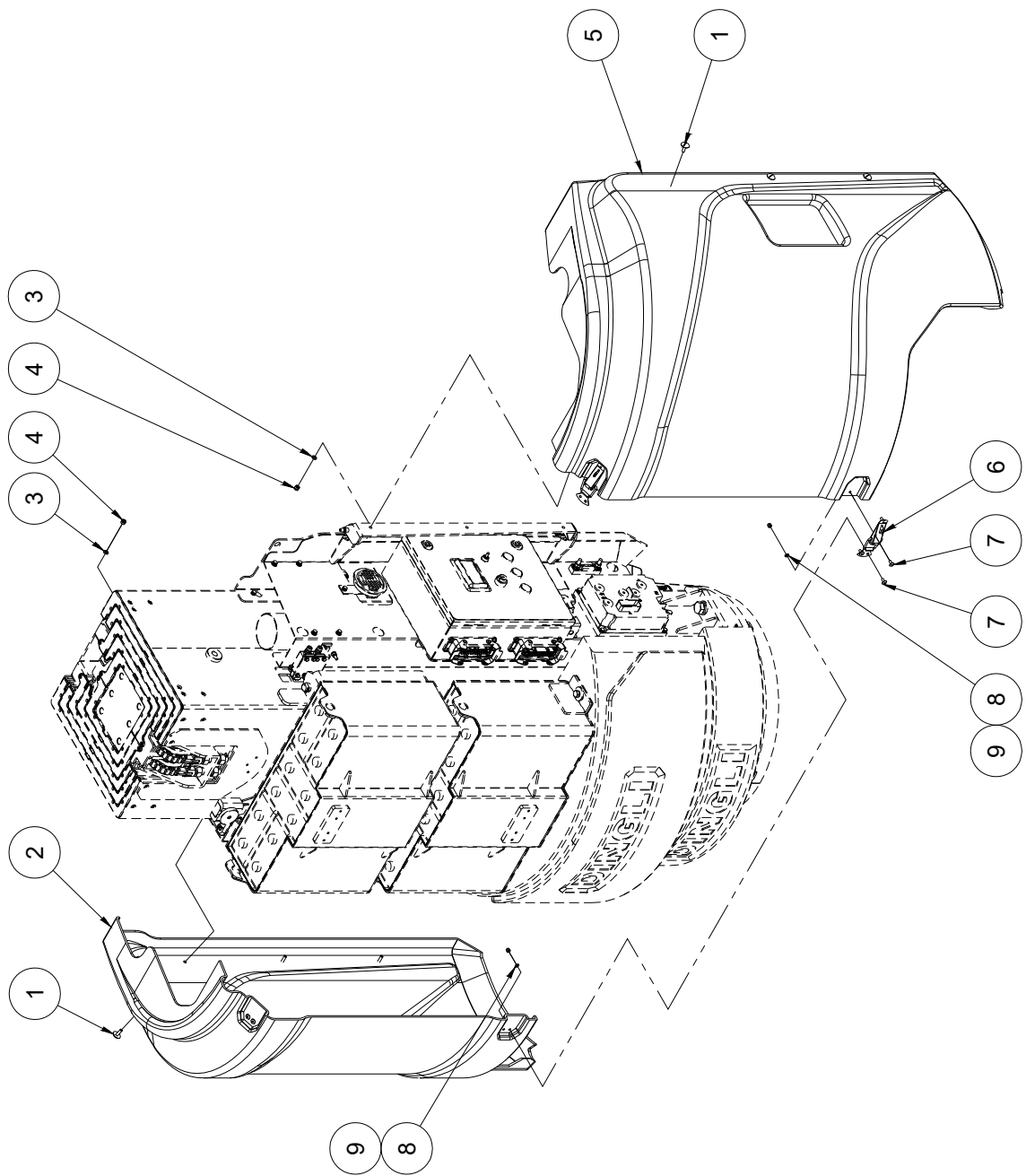
201.1 Turntable and Chassis Installation

Item	Part No.	Description	Qty.
1	00004901	Rotation motor	1
2	00002050	Screw GB/T 70.1 M10×40	4
3	00000679	Washer GB/T 93 10	4
4	00000615	Washer GB/T 97.1 10	4
5	00001315	Straight fitting	3
6	10006148	Towline	1
7		Turntable assembly (refer to 203.1)	1
8	00005016	Bolt GB/T 5783 M18×35	6
9	00002225	Washer GB/T 93 18	6
10	00002589	Washer GB/T 97.1 18	6
11	00002712	Nut GB/T 6170 M4	4
12	00000779	Washer GB/T 93 4	4
13	00000778	Washer GB/T 97.1 4	8
14	00000604	Screw GB/T 70.1 M4×16	4
15	10006191	Towline bracket	1
16	00000818	Bolt GB/T 5783 M6×16	4
17	00000621	Washer GB/T 93 6	4
18	00000620	Washer GB/T 97.1 6	10
19	10006192	Towline bracket	1
20	00005058	Bolt GB/T 5786 M12×1.5×70	16
21	10006183	Gear ring	1
22	00005057	Bolt GB/T 5786 M12×1.5×65	16
23	10006140	Protection board weldment	1
24	00001033	Nut GB/T 6182 M6	6
25	10006144	Protection board weldment	1
26	10007345	Mast soleplate weldment	1
27	00001042	Screw GB/T 70.1 M6×30	6
28	00000642	Tilt sensor	1
29	00000605	Washer GB/T 97.1 5	3

201.1 Turntable and Chassis Installation

Item	Part No.	Description	Qty.
30	00000606	Washer GB/T 93 5	3
31	00001246	Screw GB/T 70.1 M5×16	3

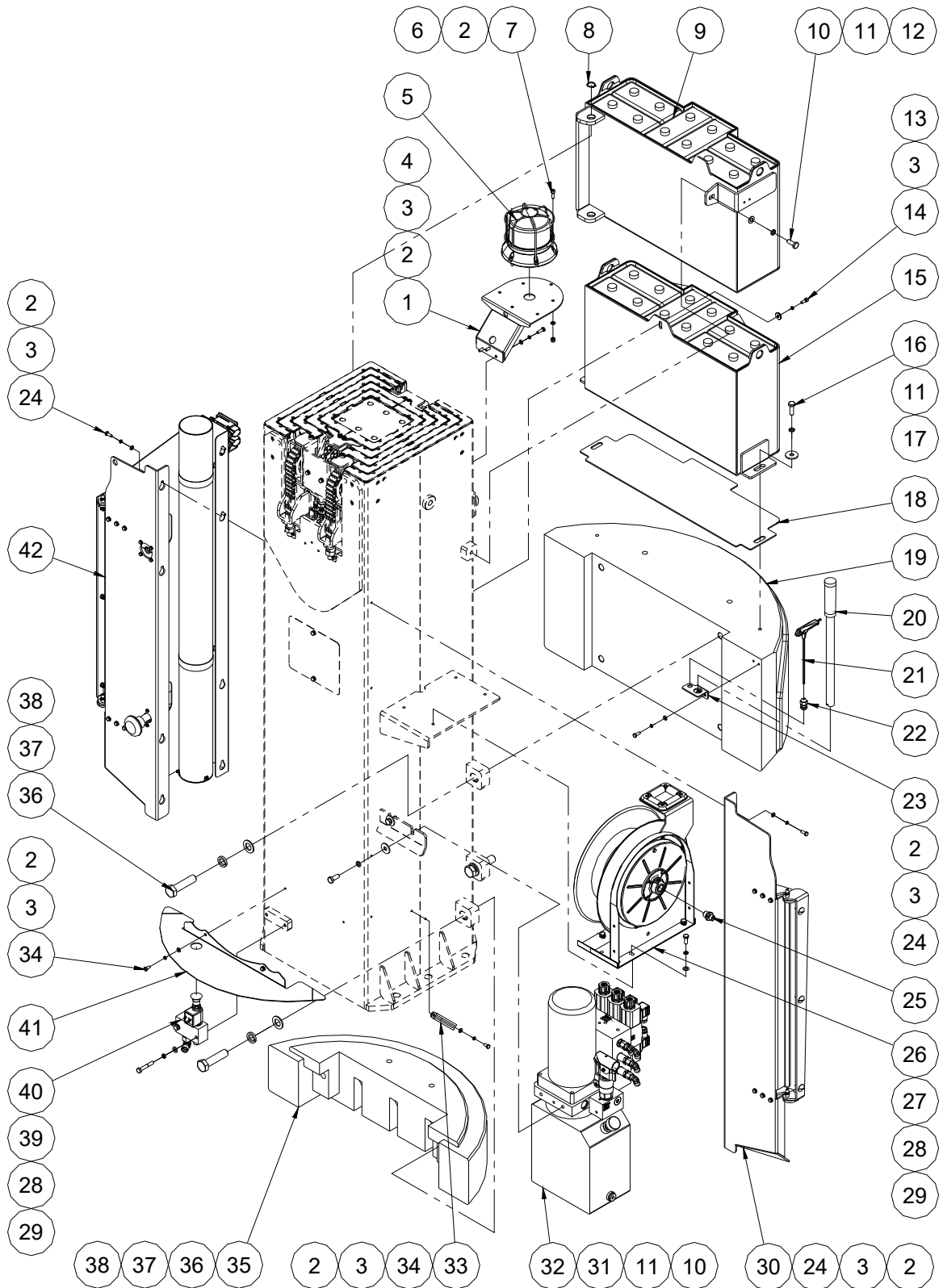
202.1 Turntable Covers Installation



202.1 Turntable Covers Installation

Item	Part No.	Description	Qty.
1	10000063	Screw (L20)	6
2	10006093	Right cover	1
3	00000620	Washer GB/T 97.1 6	6
4	00001033	Nut GB/T 6182 M6	6
5	10006092	Left cover	1
6	10006036	Lock	2
7	00001011	Screw GB/T 973 M5×12	8
8	00000605	Washer GB/T 97.1 5	8
9	00001169	Nut GB/T 889.1 M5	8

203.1 Turntable Assembly



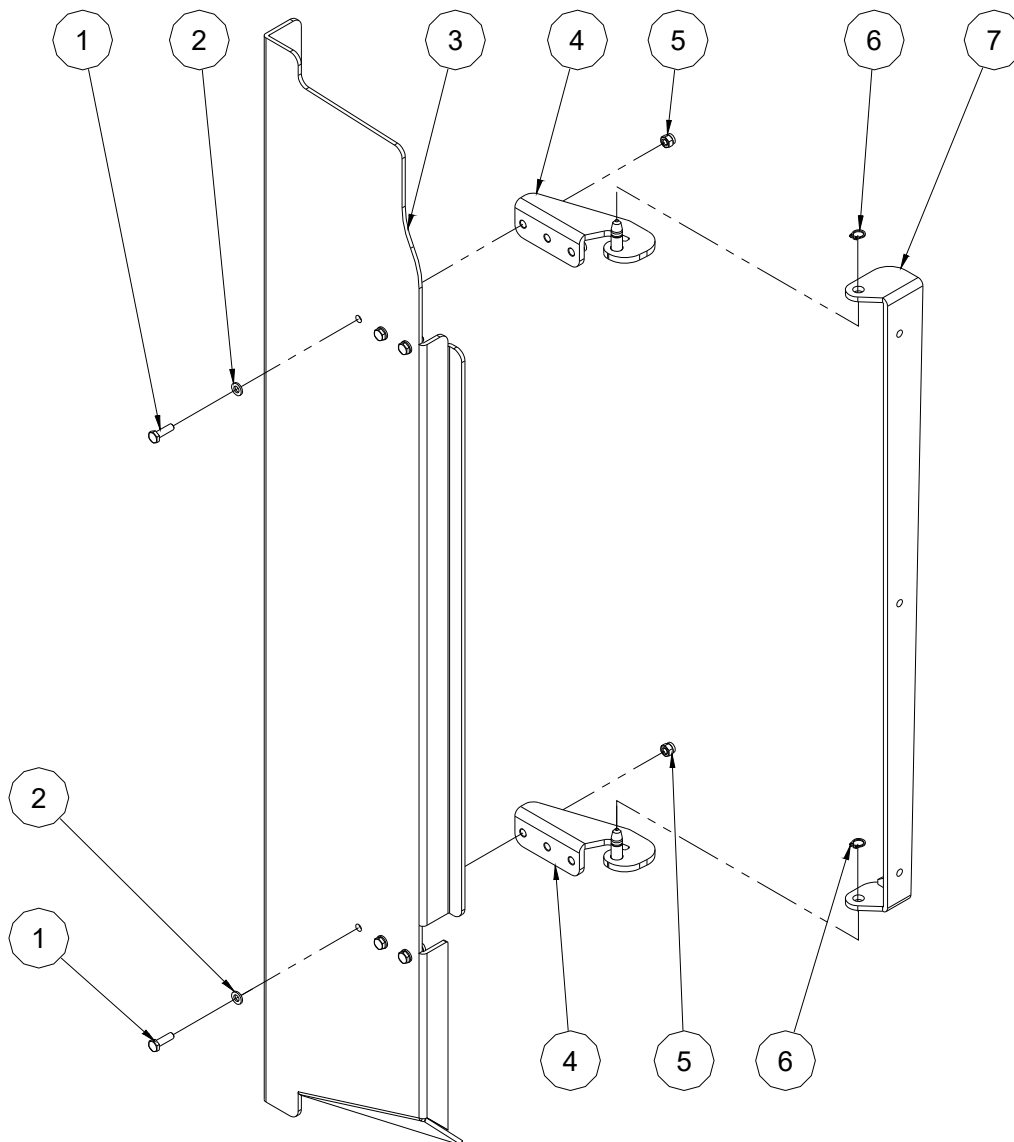
203.1 Turntable Assembly

Item	Part No.	Description	Qty.
1	10006165	Beacon bracket	1
2	00000620	Washer GB/T 97.1 6	20
3	00000621	Washer GB/T 93 6	18
4	00000743	Bolt GB/T 5783 M6×20	3
5	00004757	Beacon	1
6	00001033	Nut GB/T 6182 M6	3
7	00000774	Screw GB/T 70.1 M6×20	3
8	00000926	Circlips GB/T 894.1-20	2
9	10006159	Upper battery unit	1
10	00000678	Bolt GB/T 5783 M10×25	3
11	00000679	Washer GB/T 93 10	5
12	00000615	Washer GB/T 97.1 10	1
13	10005802	Washer	1
14	00000876	Screw GB/T 70.1 M6×16	1
15	10006150	Lower battery unit	1
16	00000683	Bolt GB/T 5783 M10×30	2
17	00005107	Washer GB/T 5287 10	2
18	10006112	Rubber pad	1
19	10006257	Counterweight	1
20	00005010	Handle	1
21	00005249	Allen wrench GB/T 5356-4	1
22	00001825	Water-proof joint M12	1
23	10006104	Handle bracket	1
24	00000818	Bolt GB/T 5783 M6×16	10
25	00001315	Straight fitting	1
26	10005627	Hydraulic hose reel	1
27	00000875	Bolt GB/T 5783 M8×20	4
28	00000609	Washer GB/T 93 8	6
29	00000608	Washer GB/T 97.1 8	6

203.1 Turntable Assembly

Item	Part No.	Description	Qty.
30		Right accessory assembly (refer to 204.1)	1
31	00001028	Washer GB/T 96.1 10	2
32		Hydraulic power unit assembly (refer to 205.1)	1
33	10005186	Clamp	1
34	00000745	Bolt GB/T 5783 M6×12	3
35	10006256	Counterweight	1
36	00004231	Bolt GB/T 5782 M20×80	6
37	00002219	Washer GB/T 93 20	6
38	00001050	Washer GB/T 97.1 20	6
39	00002089	Bolt GB/T 5782 M8×50	2
40		Emergency lowering manifold (refer to 207.1)	1
41	10006081	Lower housing	1
42		Left accessory assembly (refer to 208.1)	1

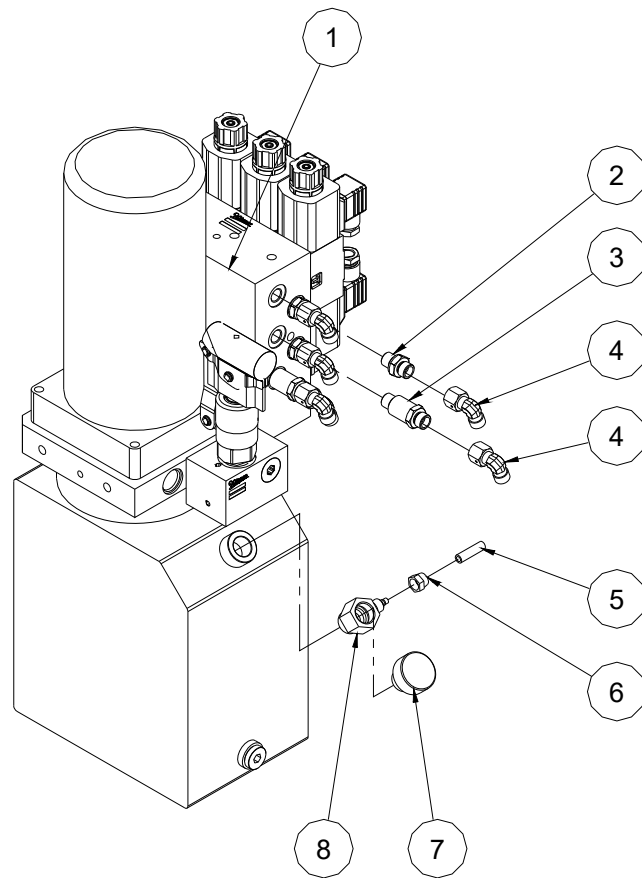
204.1 Right Accessory Assembly



204.1 Right Accessory Assembly

Item	Part No.	Description	Qty.
1	00000743	Bolt GB/T 5783 M6×20	6
2	00000620	Washer GB/T 97.1 6	6
3	10006185	Right plate	1
4	10006188	Hinge seat	2
5	00001033	Nut GB/T 6182 M6	6
6	00000991	Circlips GB/T 894.1-10	2
7	10006186	Hinge	1

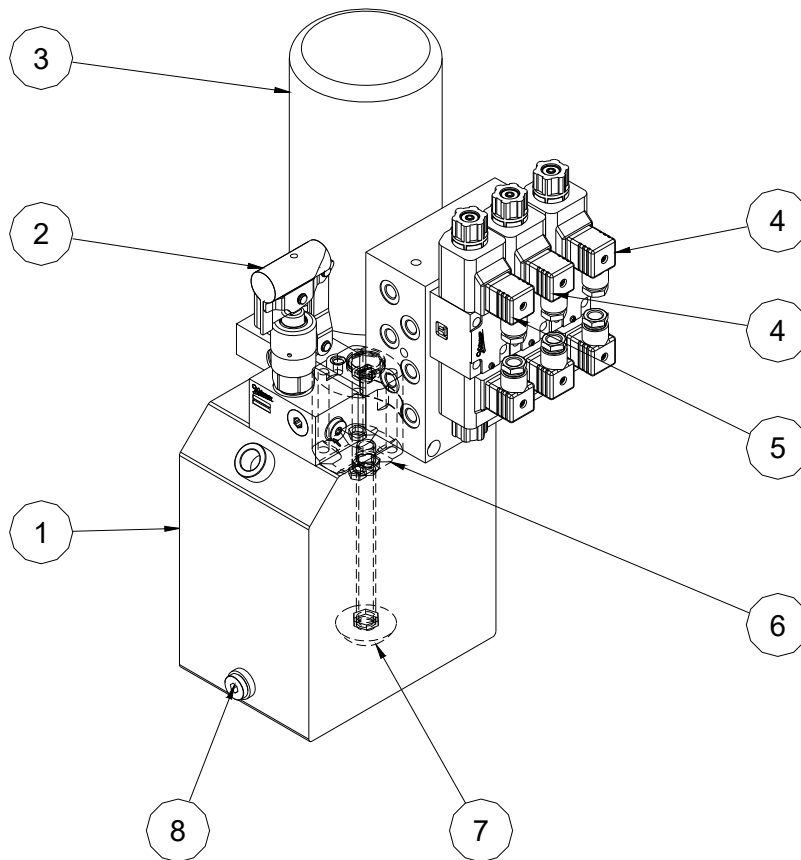
205.1 Hydraulic Power Unit Assembly



205.1 Hydraulic Power Unit Assembly

Item	Part No.	Description	Qty.
1	00005000	Hydraulic power unit (refer to 206.1)	1
2	00001316	Straight fitting	5
3	00004904	Straight fitting	2
4	00001832	Elbow	6
5	10005957	Hose	1
6	10000462	Nut	1
7	00005210	Breather	1
8	10000463	Fitting	1

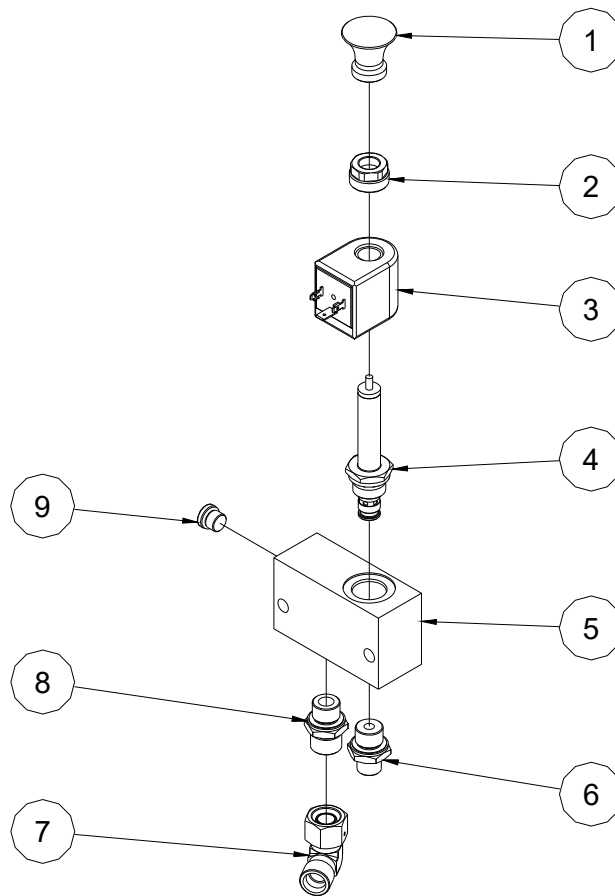
206.1 Hydraulic Power Unit



206.1 Hydraulic Power Unit

Item	Part No.	Description	Qty.
1	00005002	Tank	1
2	00005004	Manual pump	1
3	00005001	Motor	1
4	00005003	Solenoid valve	2
5	00004996	Solenoid valve	1
6	00004998	Pump	1
7	00005007	Filter web	1
8	00001113	Plug VST13/8ED	1

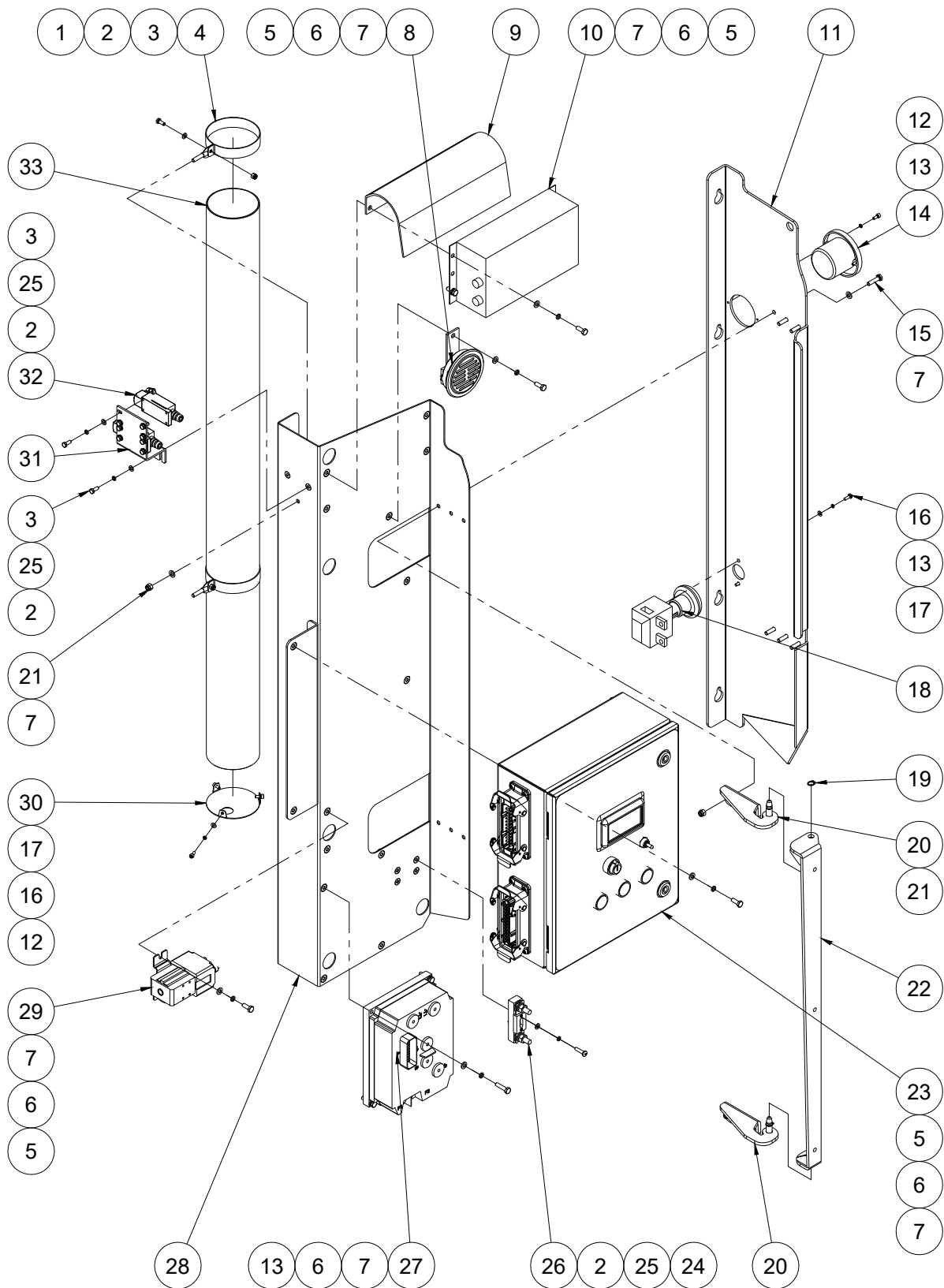
207.1 Emergency Lowering Manifold



207.1 Emergency Lowering Manifold

Item	Part No.	Description	Qty.
1	10006087	Handle	1
2	00003352	Nut	1
3	00003597	Coil	1
4	00004835	Solenoid valve spool	1
5	00004834	Valve body	1
6	00002921	Straight fitting	1
7	00001834	Elbow	1
8	00001294	Straight fitting	1
9	00002998	Plug SAE4	1

208.1 Left Accessory Assembly



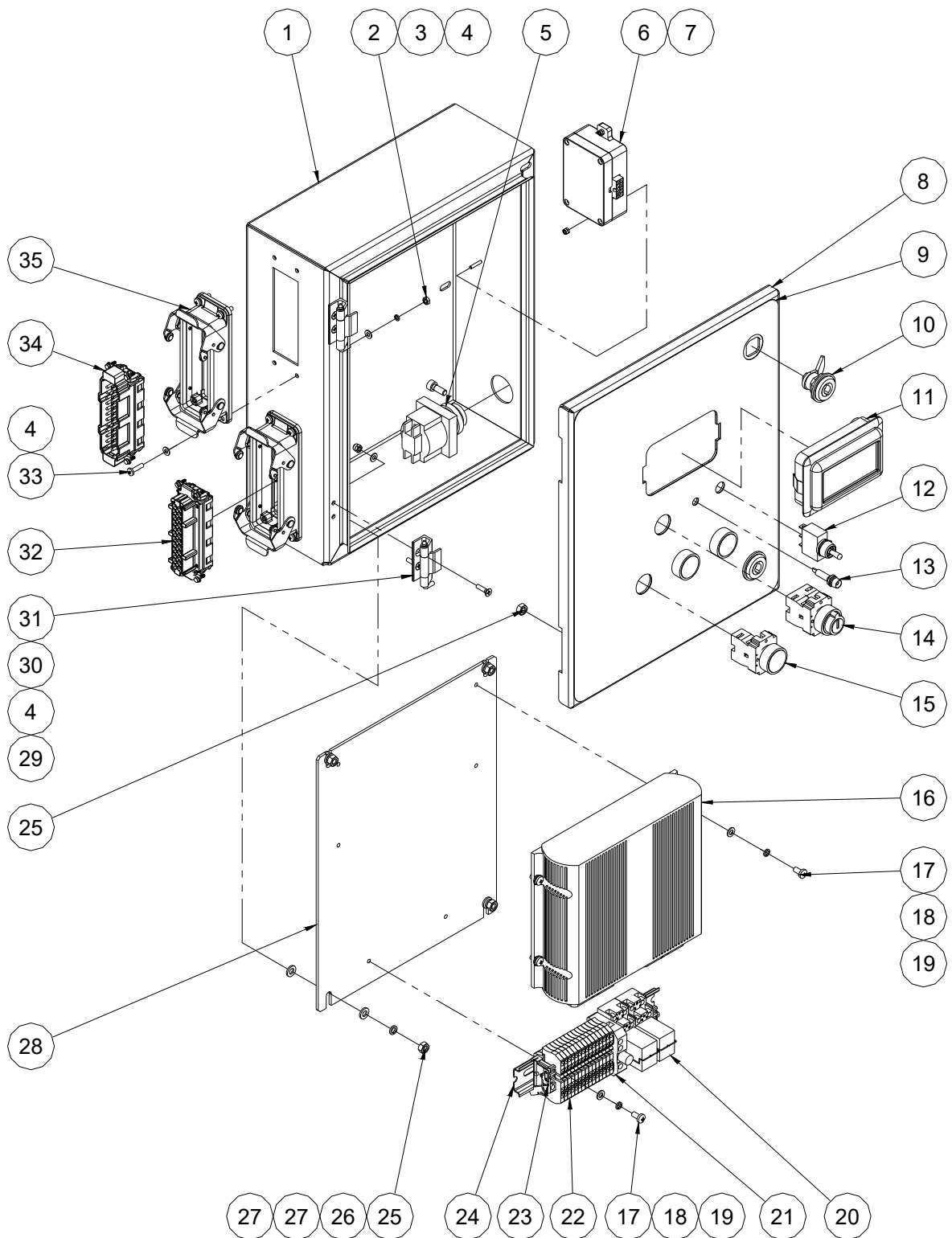
208.1 Left Accessory Assembly

Item	Part No.	Description	Qty.
1	00000613	Nut GB/T 6182 M5	2
2	00000605	Washer GB/T 97.1 5	14
3	00002246	Bolt GB/T 5783 M5×12	12
4	10006177	Clamp	2
5	00000818	Bolt GB/T 5783 M6×16	11
6	00000621	Washer GB/T 93 6	15
7	00000620	Washer GB/T 97.1 6	23
8	00000666	Horn	1
9	10006568	Charger protection plate	1
10	00005015	Charger	1
11	10007318	Left plate	1
12	00002002	Screw GB/T 70.1 M4×10	5
13	00000779	Washer GB/T 93 4	7
14	00002564	Plug	1
15	00000619	Bolt GB/T 5783 M6×25	10
16	00002414	Screw GB/T 818 M4×12 - H	2
17	00000778	Washer GB/T 97.1 4	5
18	00000655	Power switch	1
19	00000991	Circlips GB/T 894.1-10	2
20	10006173	Hinge seat	2
21	00001033	Nut GB/T 6182 M6	8
22	10006180	Hinge	1
23		Ground control box assembly (refer to 209.1)	1
24	00000612	Screw GB/T 818 M5×20 - H	2
25	00000606	Washer GB/T 93 5	12
26	00001064	250A Fuse assembly	1
27	00002016	Motor controller	1
28	10006168	Left plate	1
29	00002485	DC Contactor	1

208.1 Left Accessory Assembly

Item	Part No.	Description	Qty.
30	10006179	Tube cover	1
31	10006176	Switch bracket	1
32	00000748	Limit switch	2
33	10006178	Tube	1

209.1 Ground Control Box Assembly



209.1 Ground Control Box Assembly

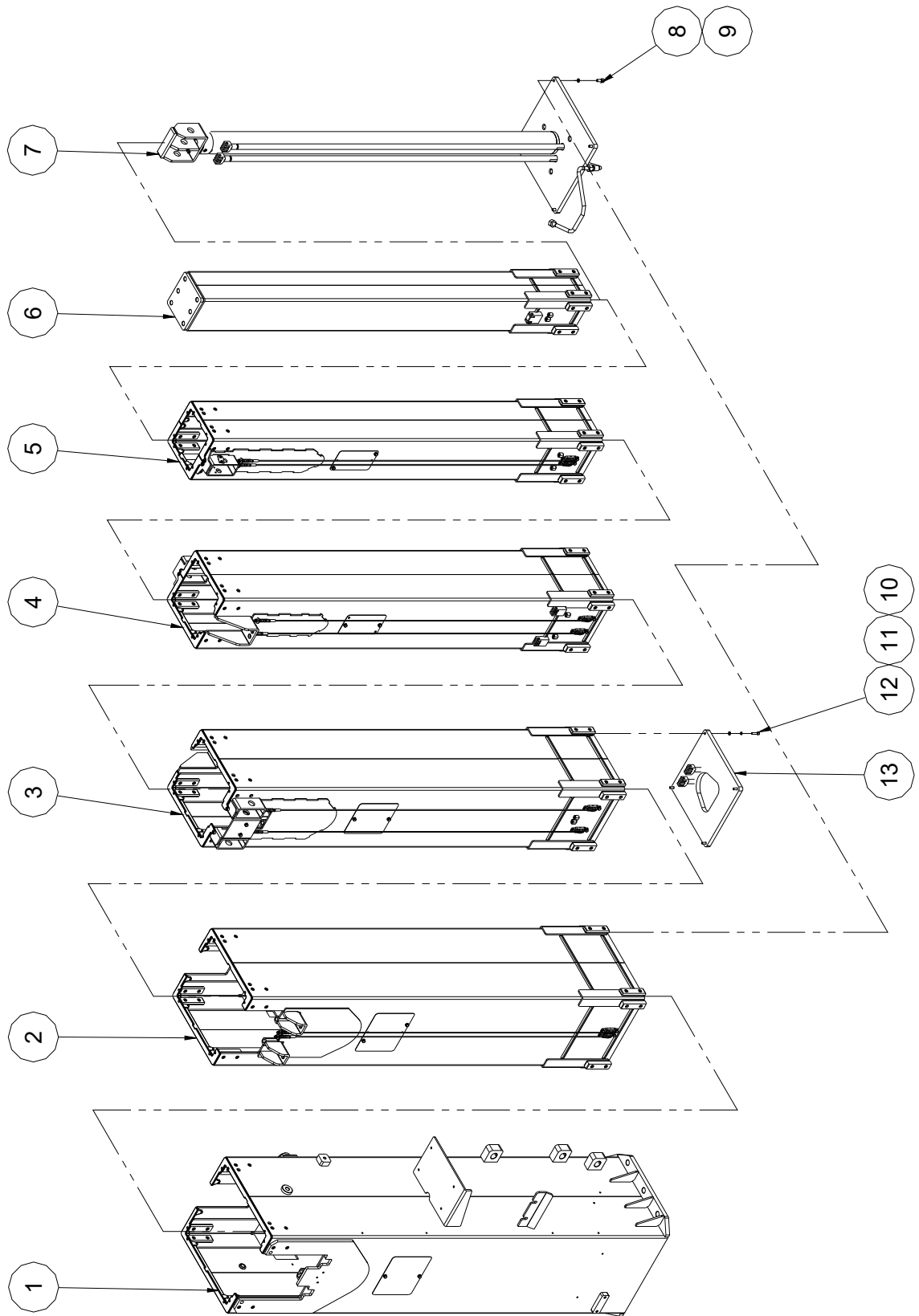
Item	Part No.	Description	Qty.
1	10006275	Ground control box weldment	1
2	00002712	Nut GB/T 6170 M4	8
3	00000779	Washer GB/T 93 4	8
4	00000778	Washer GB/T 97.1 4	20
5	00000665	Alarm	1
6	00004422	PWM convertor module	1
7	00003700	Nut GB/T 889.1 M3	2
8	10006277	Ground control box cover	1
9	09120008	Decal, Platform control panel	1
10	00001296	Latch, Column	2
11	00005064	Display	1
12	00000654	Toggle switch	1
13	00000734	Indicator	1
14	00000760	Key switch	1
--	00000753	Key switch head	1
--	00000755	Base with 1 NO contact	1
--	00003050	Key	1
15	00002341	Pushbutton switch	3
--	00002342	Pushbutton switch head	1
--	00002346	Base with 1 NO contact	1
16	00005052	Controller	1
17	00002319	Screw GB/T 818 M5×10 - H	6
18	00000606	Washer GB/T 93 5	6
19	00000605	Washer GB/T 97.1 5	6
20	00000648	Relay	2
21	00000661	End, Fuse	1
22	00000659	End, Straight	15
23	00000660	End, Fixation	2
24	10006288	Terminal rail	1

209.1 Ground Control Box Assembly

Item	Part No.	Description	Qty.
25	00002247	Nut GB/T 6170 M6	6
26	00000621	Washer GB/T 93 6	4
27	00000620	Washer GB/T 97.1 6	8
28	10006279	Mounting plate	1
29	00001236	Nut GB/T 889.1 M4	4
30	00002940	Screw GB/T 819 M4×16 - H	4
31	50000217	Hinge	2
32	00000728	Female insert	1
33	00001232	Screw GB/T 818 M4×16 - H	8
34	00000730	Male insert	1
35	00000732	Housing	2

Section 3 Mast

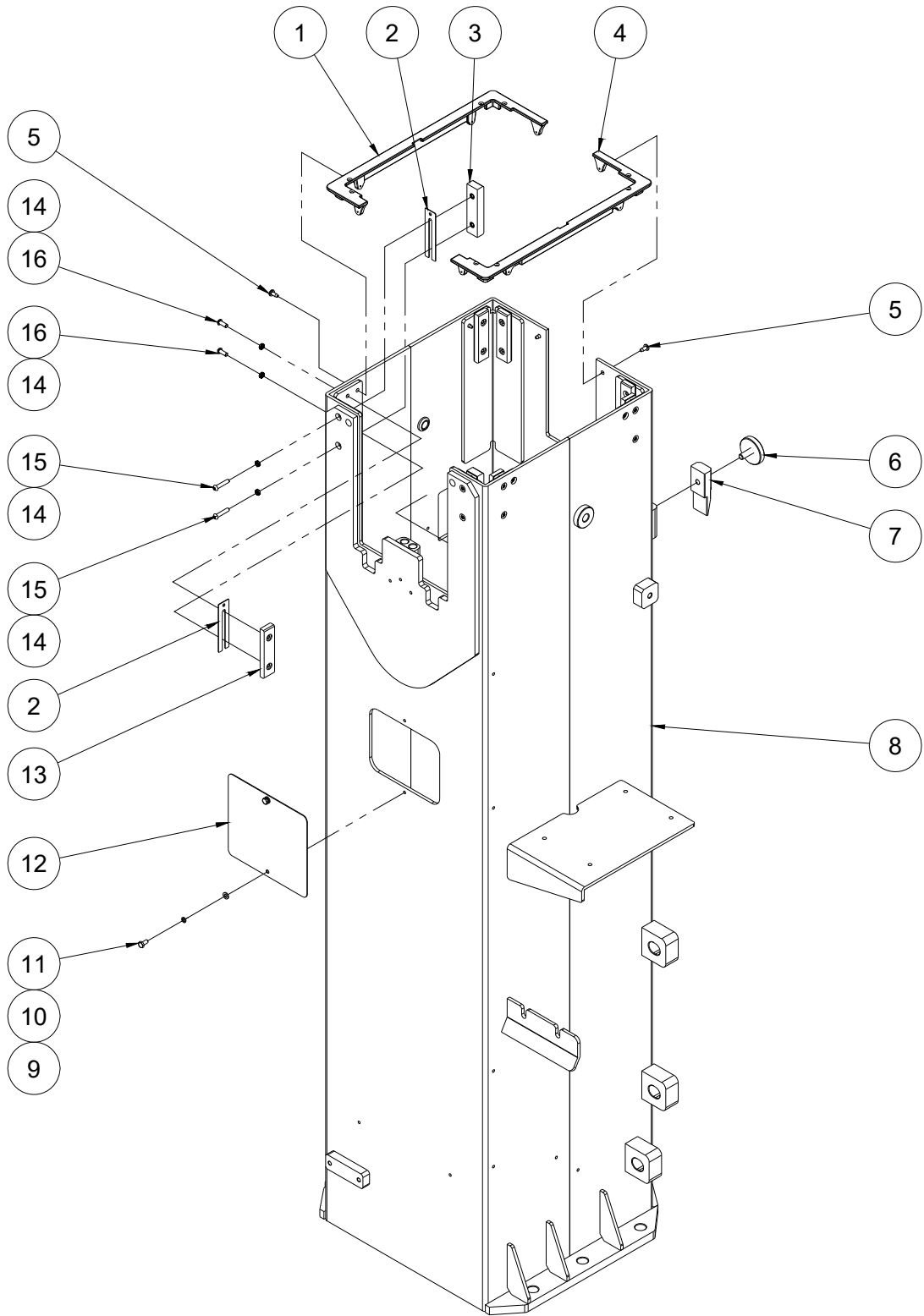
301.1 Mast Assembly



301.1 Mast Assembly

Item	Part No.	Description	Qty.
1		Mast 1 assembly (refer to 302.1)	1
2		Mast 2 assembly (refer to 303.1)	1
3		Mast 3 assembly (refer to 305.1)	1
4		Mast 4 assembly (refer to 306.1)	1
5		Mast 5 assembly (refer to 307.1)	1
6		Mast 6 assembly (refer to 308.1)	1
7		Lift cylinder assembly (without seal kit) (refer to 501.1)	1
8	00001061	Screw GB/T 70.1 M8×20	4
9	00000609	Washer GB/T 93 8	4
10	00000620	Washer GB/T 97.1 6	4
11	00000621	Washer GB/T 93 6	4
12	00001034	Screw GB/T 70.1 M6×25	4
13	10005952	Soleplate weldment	1

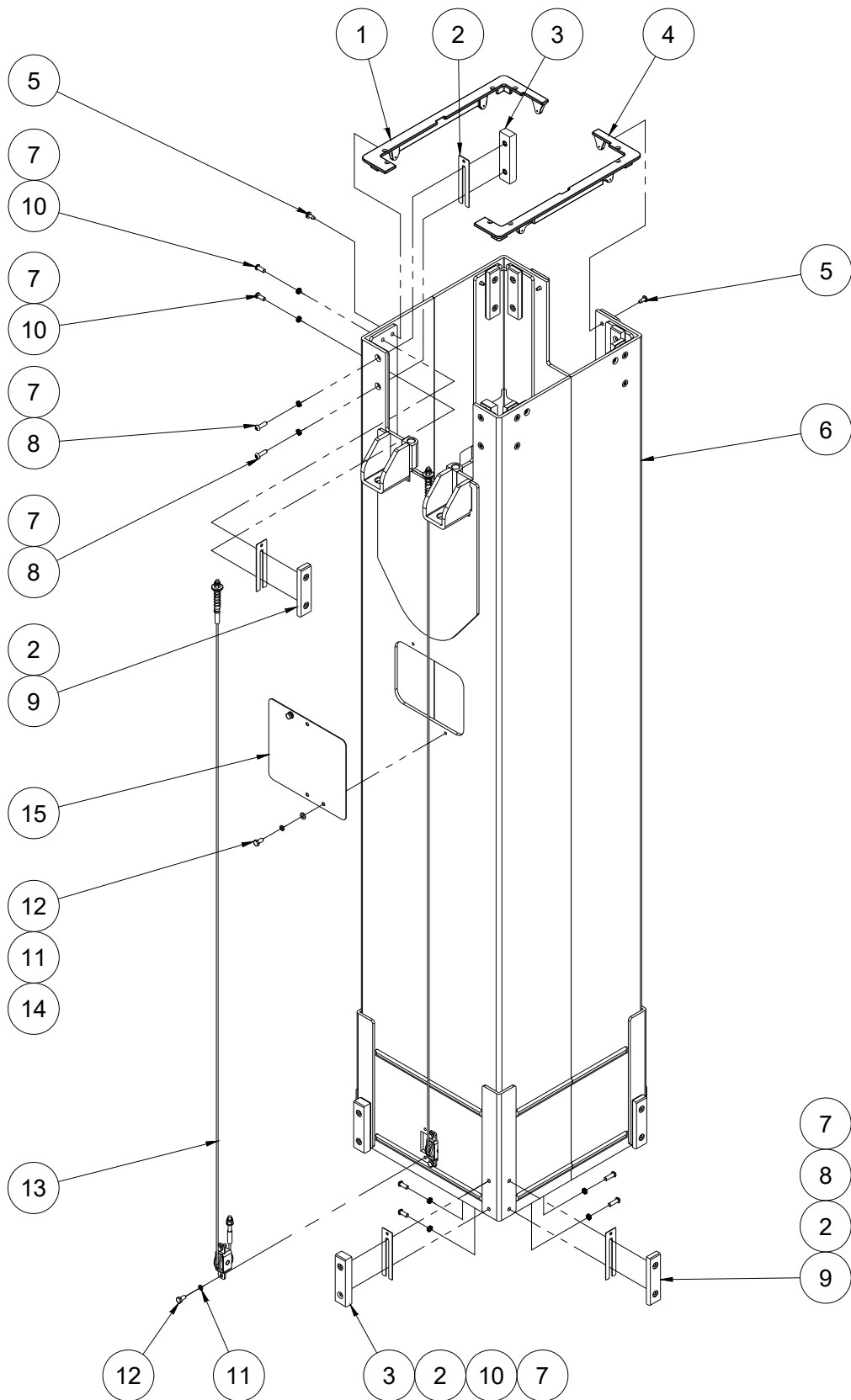
302.1 Mast 1 Assembly



302.1 Mast 1 Assembly

Item	Part No.	Description	Qty.
1	10005569	Mast cover	1
2	10005494	Adjusting plate	8
3	10005495	Slide block	2
4	10005568	Mast cover	1
5	00004828	Screw GB/T 845 ST5.5×13	8
6	10005564	Fixed board	1
7	10005511	Wedge	1
8	10005490	Mast 1 weldment	1
9	00000620	Washer GB/T 97.1 6	2
10	00000621	Washer GB/T 93 6	2
11	00000745	Bolt GB/T 5783 M6×12	2
12	10005510	Plate	1
13	10005498	Slide block	6
14	00004816	Washer 6 DIN 25201	16
15	00001183	Screw GB/T 70.2 M6×30	4
16	00001179	Screw GB/T 70.2 M6×16	12

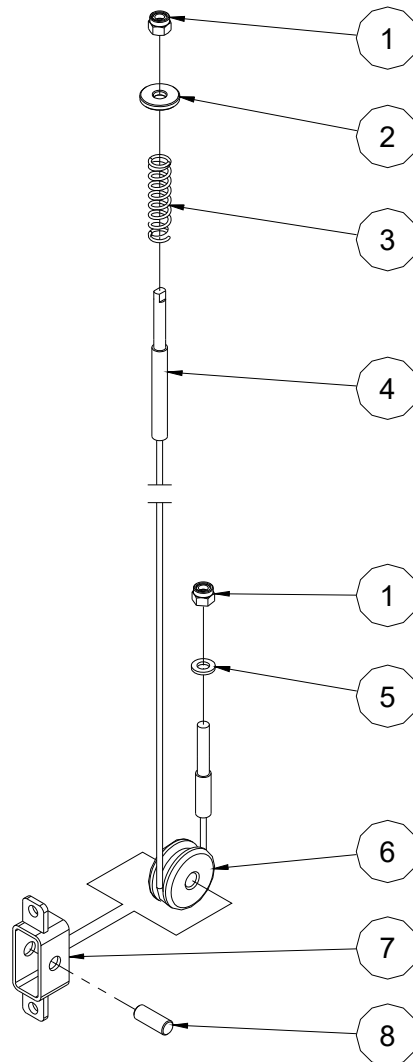
303.1 Mast 2 Assembly



303.1 Mast 2 Assembly

Item	Part No.	Description	Qty.
1	10005536	Mast cover	1
2	10005494	Adjusting plate	16
3	10005495	Slide block	4
4	10005535	Mast cover	1
5	00004828	Screw GB/T 845 ST5.5×13	6
6	10005572	Mast 2 weldment	1
7	00004816	Washer 6 DIN 25201	32
8	00001180	Screw GB/T 70.2 M6×20	8
9	10005498	Slide block	12
10	00001179	Screw GB/T 70.2 M6×16	24
11	00000621	Washer GB/T 93 6	6
12	00000745	Bolt GB/T 5783 M6×12	6
13		Wire rope assembly (refer to 304.1)	2
14	00000620	Washer GB/T 97.1 6	4
15	10005534	Plate	1

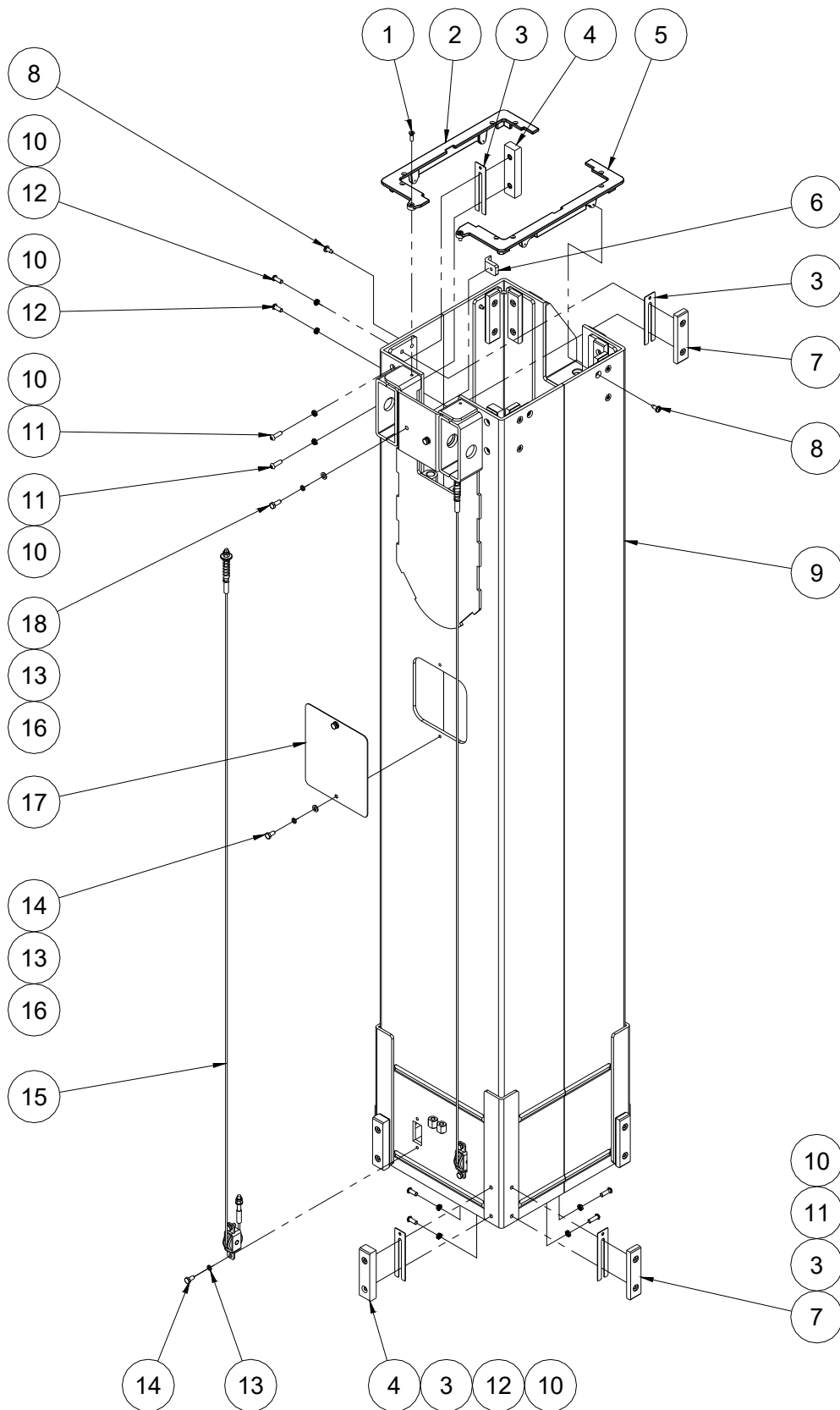
304.1 Wire Rope Assembly



304.1 Wire Rope Assembly

Item	Part No.	Description	Qty.
1	00001033	Nut GB/T 6182 M6	2
2	10005802	Washer	1
3	10005801	Spring	1
4	10005803	Wire rope	1
5	00000620	Washer GB/T 97.1 6	1
6	10005599	Pulley	1
7	10005598	Pulley bracket	1
8	10005800	Pin	1

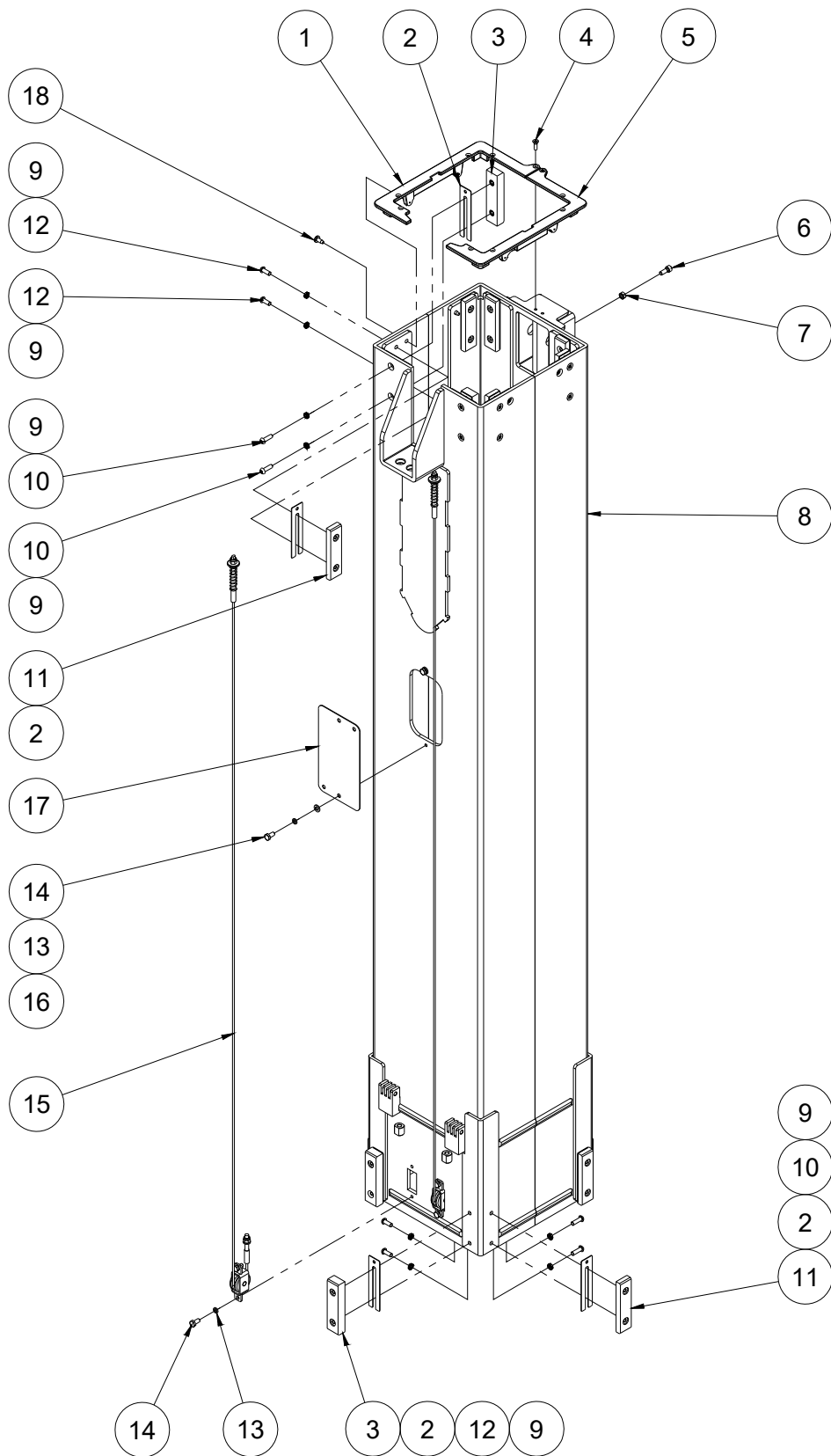
305.1 Mast 3 Assembly



305.1 Mast 3 Assembly

Item	Part No.	Description	Qty.
1	00003380	Screw GB/T 819 M5×16 - H	2
2	10005837	Mast cover	1
3	10005494	Adjusting plate	16
4	10005495	Slide block	4
5	10005836	Mast cover	1
6	10005955	Press plate	2
7	10005498	Slide block	12
8	00004828	Screw GB/T 845 ST5.5×13	4
9	10005827	Mast 3 weldment	1
10	00004816	Washer 6 DIN 25201	33
11	00001180	Screw GB/T 70.2 M6×20	8
12	00001179	Screw GB/T 70.2 M6×16	25
13	00000621	Washer GB/T 93 6	8
14	00000745	Bolt GB/T 5783 M6×12	6
15		Wire rope assembly (refer to 304.1)	2
16	00000620	Washer GB/T 97.1 6	6
17	10005956	Plate	1
18	00000818	Bolt GB/T 5783 M6×16	2

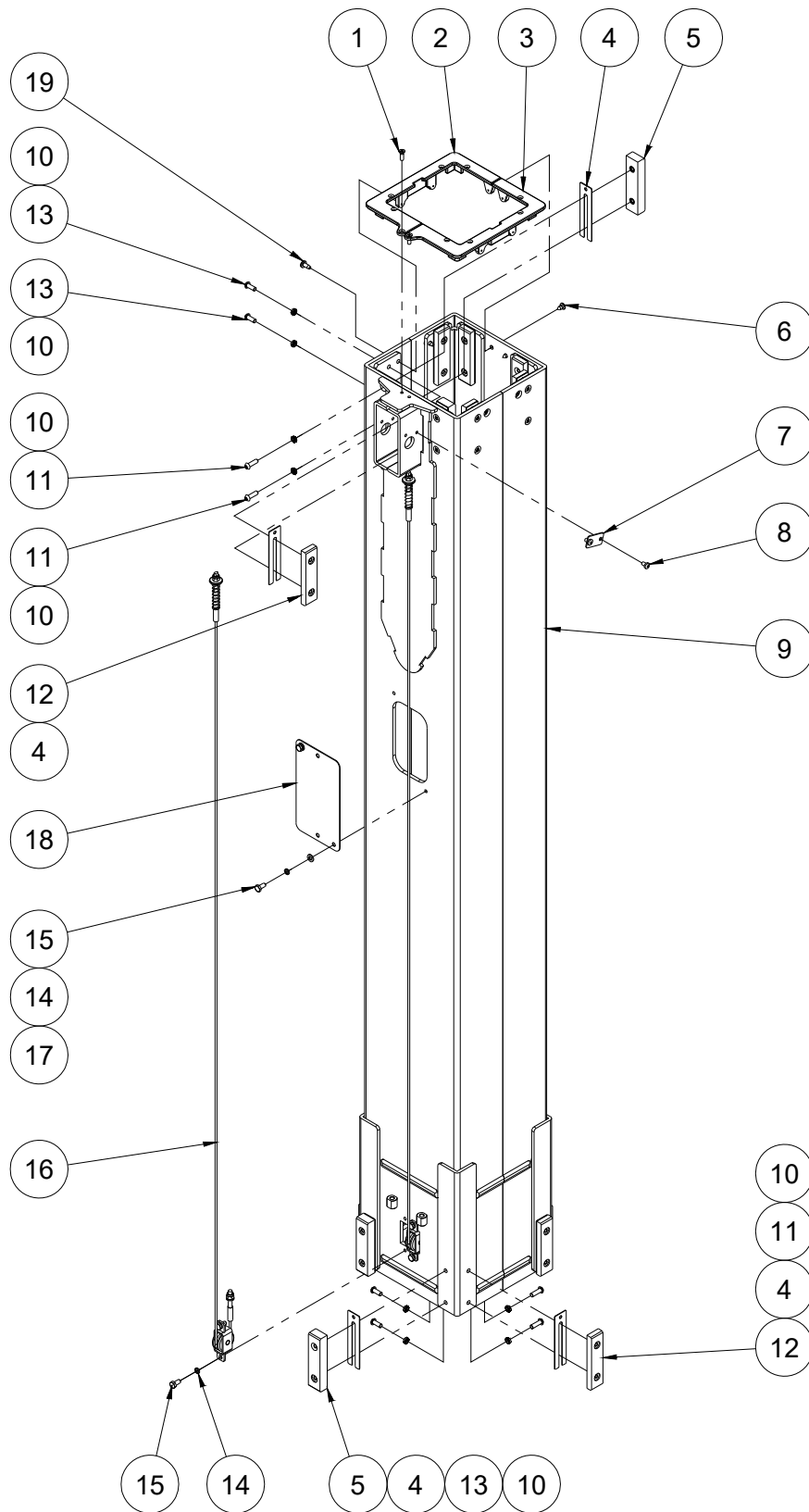
306.1 Mast 4 Assembly



306.1 Mast 4 Assembly

Item	Part No.	Description	Qty.
1	10005978	Mast cover	1
2	10005494	Adjusting plate	16
3	10005495	Slide block	4
4	00003380	Screw GB/T 819 M5×16 - H	2
5	10005975	Mast cover	1
6	00000876	Screw GB/T 70.1 M6×16	1
7	00002247	Nut GB/T 6170 M6	1
8	10005961	Mast 5 weldment	1
9	00004816	Washer 6 DIN 25201	32
10	00001180	Screw GB/T 70.2 M6×20	8
11	10005498	Slide block	12
12	00001179	Screw GB/T 70.2 M6×16	24
13	00000621	Washer GB/T 93 6	6
14	00000745	Bolt GB/T 5783 M6×12	6
15		Wire rope assembly (refer to 304.1)	2
16	00000620	Washer GB/T 97.1 6	4
17	10005979	Plate	1
18	00004828	Screw GB/T 845 ST5.5×13	4

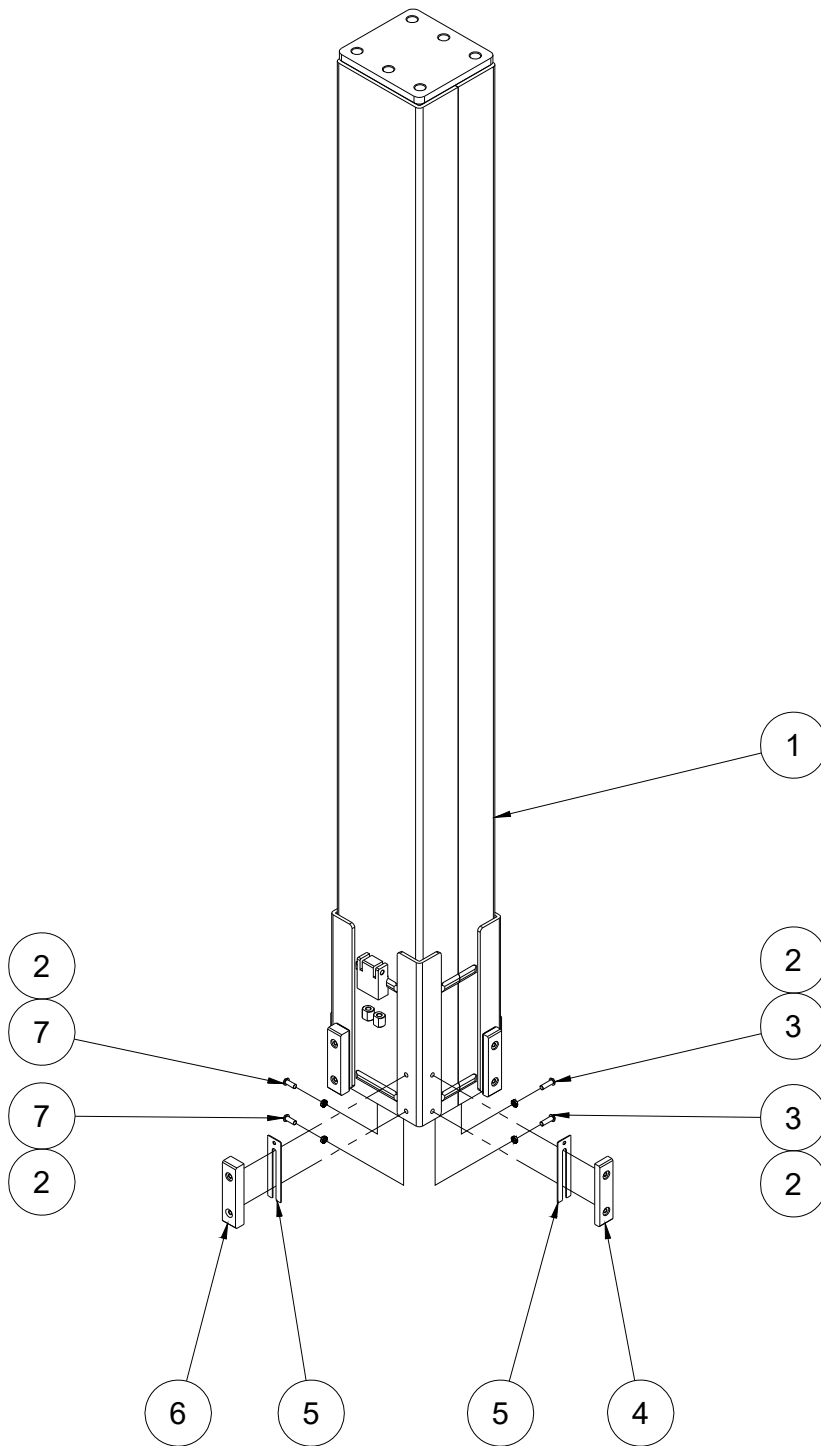
307.1 Mast 5 Assembly



307.1 Mast 5 Assembly

Item	Part No.	Description	Qty.
1	00003380	Screw GB/T 819 M5×16 - H	2
2	10005992	Mast cover	1
3	10005991	Mast cover	1
4	10005494	Adjusting plate	16
5	10005495	Slide block	4
6	00004983	Screw GB/T 846 ST5.5×13 - C - H	2
7	10005995	Lock plate	1
8	00002391	Screw GB/T 818 M5×8 - H	2
9	10005983	Mast 5 weldment	1
10	00004816	Washer 6 DIN 25201	32
11	00001180	Screw GB/T 70.2 M6×20	8
12	10005498	Slide block	12
13	00001179	Screw GB/T 70.2 M6×16	24
14	00000621	Washer GB/T 93 6	6
15	00000745	Bolt GB/T 5783 M6×12	6
16		Wire rope assembly (refer to 304.1)	2
17	00000620	Washer GB/T 97.1 6	4
18	10005979	Plate	1
19	00004828	Screw GB/T 845 ST5.5×13	4

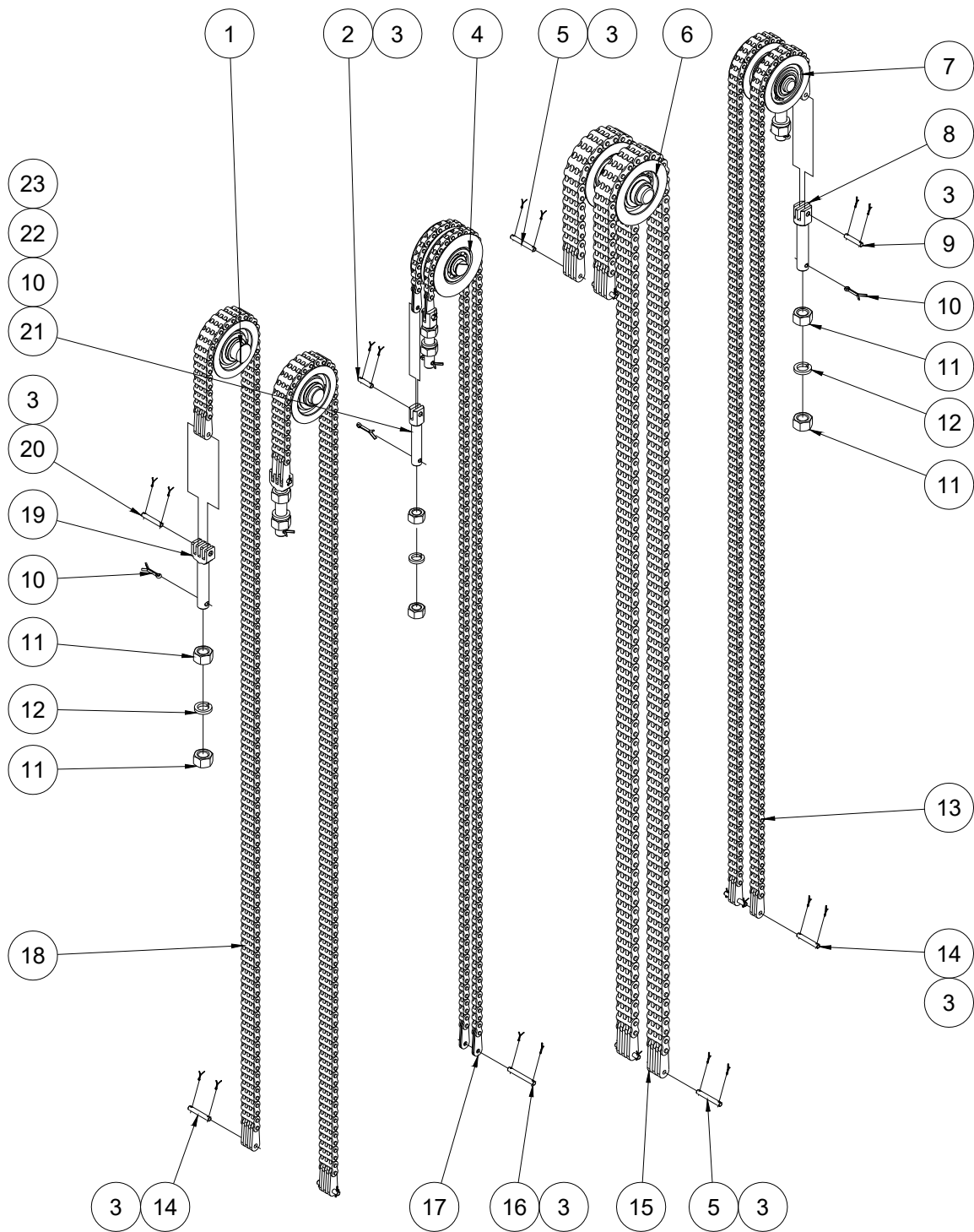
308.1 Mast 6 Assembly



308.1 Mast 6 Assembly

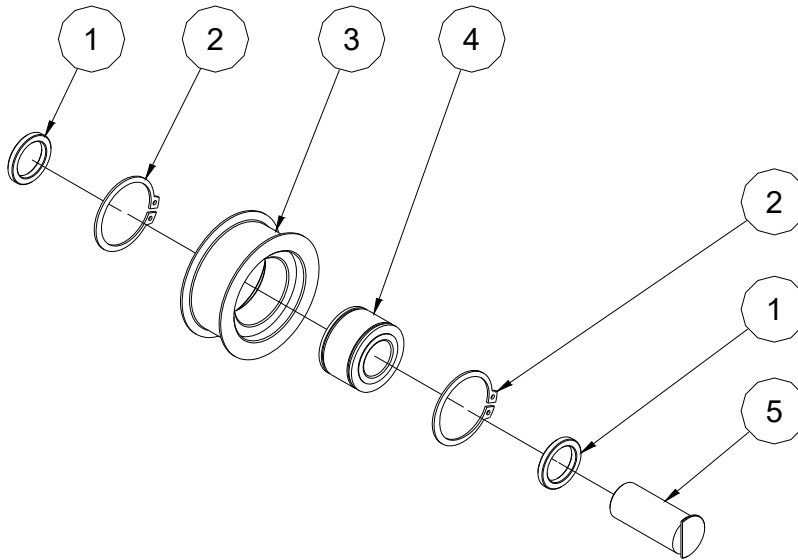
Item	Part No.	Description	Qty.
1	10005997	Mast 6 weldment	1
2	00004816	Washer 6 DIN 25201	16
3	00001180	Screw GB/T 70.2 M6×20	4
4	10005498	Slide block	6
5	10005494	Adjusting plate	8
6	10005495	Slide block	2
7	00001179	Screw GB/T 70.2 M6×16	12

309.1 Lifting Chain Assembly



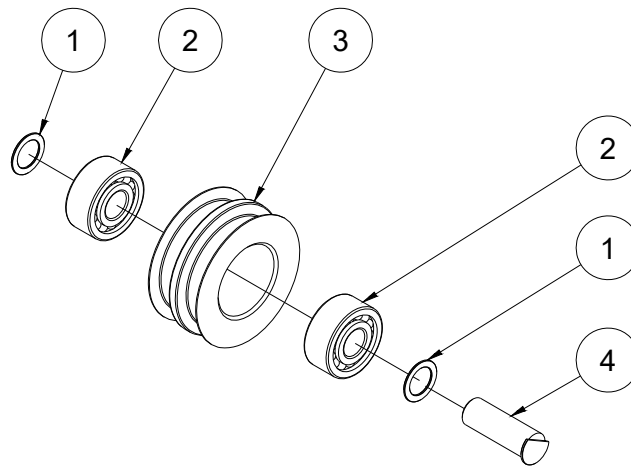
309.1 Lifting Chain Assembly

Item	Part No.	Description	Qty.
1		(2-4) mast pulley assembly (refer to 310.1)	2
2	10006130	Pin	2
3	00004995	Cotter pin GB/T 91 1,6×10	30
4		(4-6) mast pulley assembly (refer to 311.1)	1
5	10006134	Pin	4
6		(1-3) mast pulley assembly (refer to 312.1)	1
7		(3-5) mast pulley assembly (refer to 313.1)	1
8	10006136	Chain terminal	2
9	10006131	Pin	2
10	00004997	Cotter pin GB/T 91 4×25	6
11	00002510	Nut GB/T 6170 M16	8
12	00001035	Washer GB/T 93 16	4
13	10006086	Chain, (3-5) mast, LH0844-121	2
14	10006133	Pin	4
15	10006084	Chain, (1-3) mast, LH1066-133	2
16	10006135	Pin	1
17	10006147	Chain, (4-6) mast, LH0866-121	2
18	10006085	Chain, (2-4) mast, LH0866-125	2
19	10006137	Chain terminal	2
20	10006132	Pin	2
21	10006138	Chain terminal	2
22	00004994	Nut GB/T 6170 M14	4
23	00001258	Washer GB/T 93 14	2

310.1 (2-4) Mast Pulley Assembly**310.1 (2-4) Mast Pulley Assembly**

Item	Part No.	Description	Qty.
1	10006110	Washer	2
2	00000946	Circlips GB/T 894.1-48	2
3	10006109	Pulley	1
4	00004991	SL045005PPB Bearing (25×47×30)	1
5	10006108	Pin	1

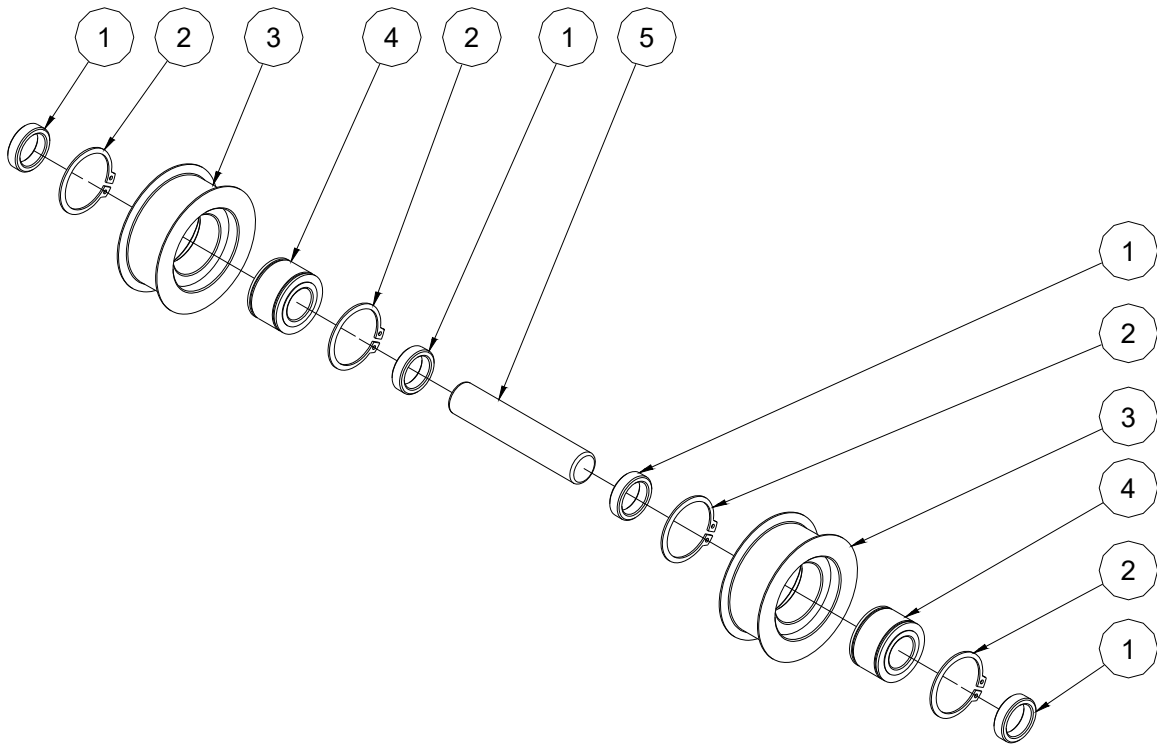
311.1 (4-6) Mast Pulley Assembly



311.1 (4-6) Mast Pulley Assembly

Item	Part No.	Description	Qty.
1	10006114	Washer	2
2	00004992	Bearing 3304 GB/T 296	2
3	10006117	Pulley	1
4	10006116	Pin	1

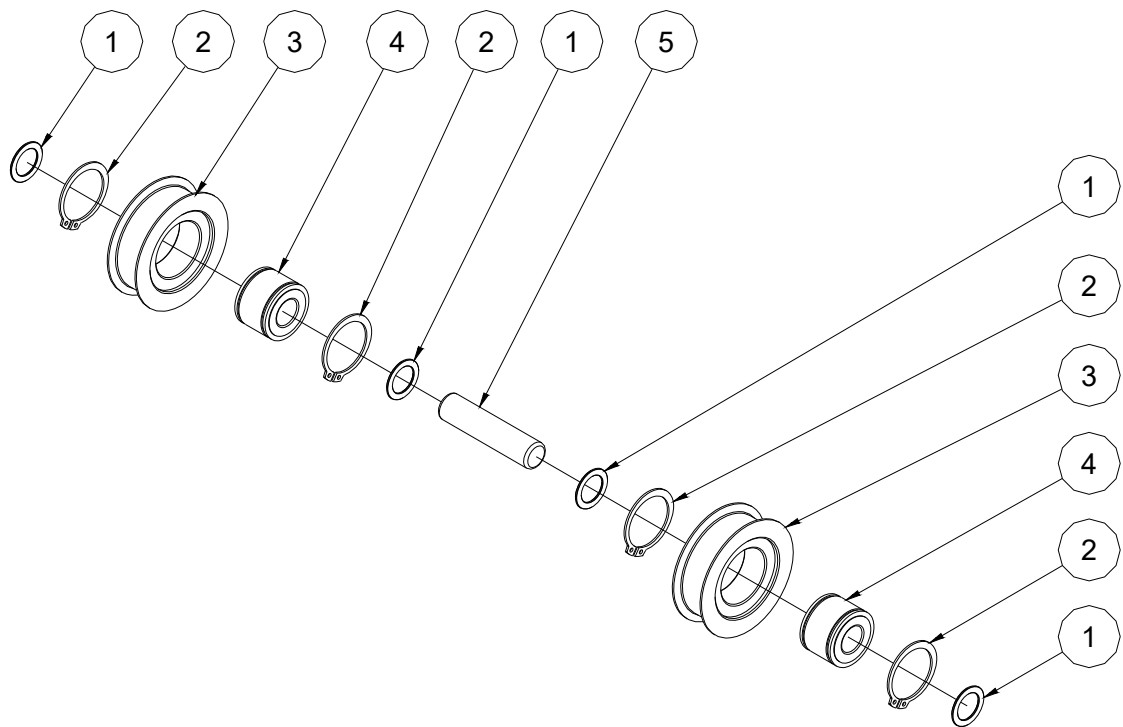
312.1 (1-3) Mast Pulley Assembly



312.1 (1-3) Mast Pulley Assembly

Item	Part No.	Description	Qty.
1	10006106	Washer	4
2	00000946	Circlips GB/T 894.1-48	4
3	10006105	Pulley	2
4	00004991	SL045005PPB Bearing (25×47×30)	2
5	00005071	893-25126 Pin	1

313.1 (3-5) Mast Pulley Assembly

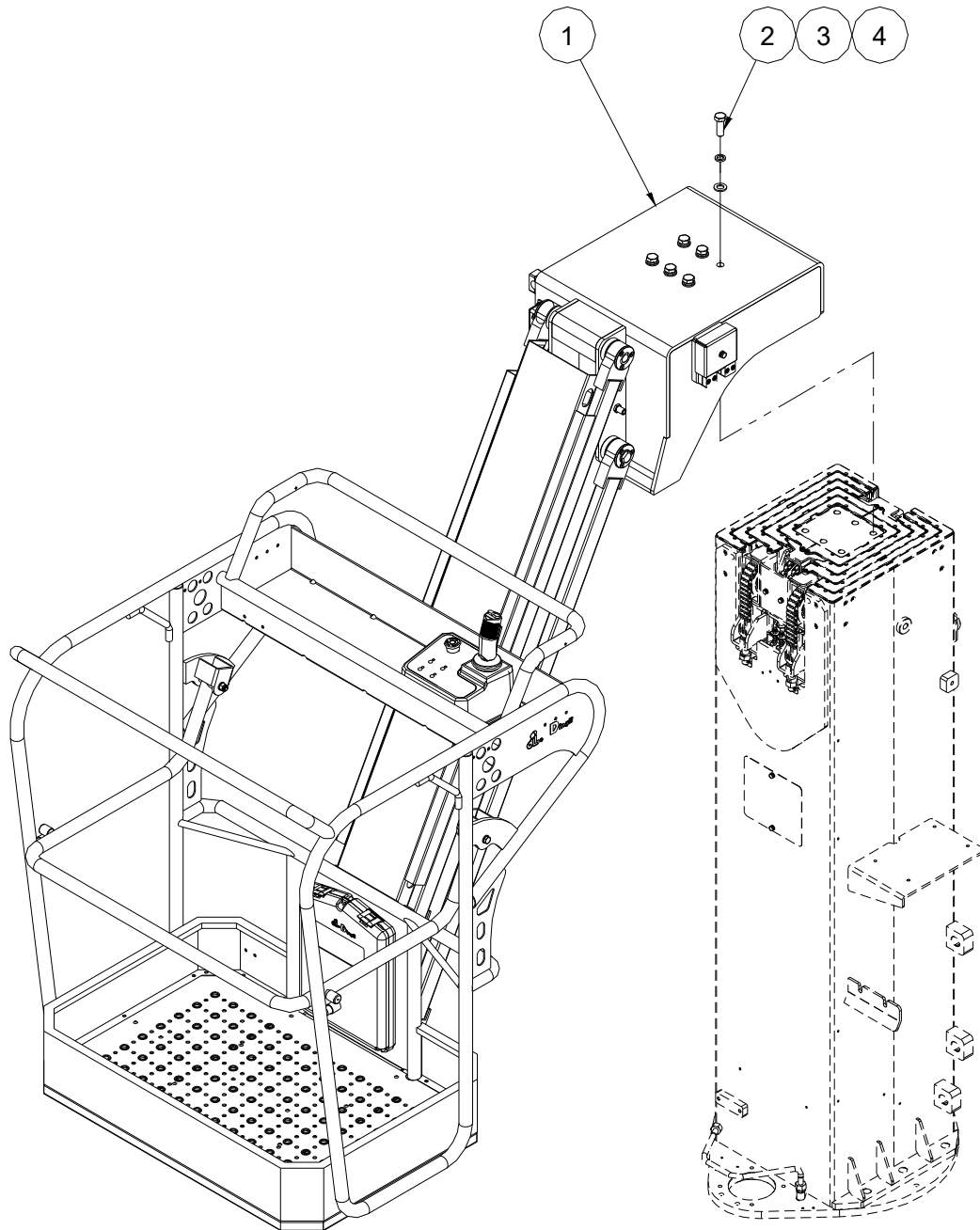


313.1 (3-5) Mast Pulley Assembly

Item	Part No.	Description	Qty.
1	10006114	Washer	4
2	00000945	Circlips GB/T 894.1-42	4
3	10006113	Pulley	2
4	00004990	SL045004PPB Bearing (20×42×30)	2
5	00005072	893-20085 Pin	1

Section 4 Platform

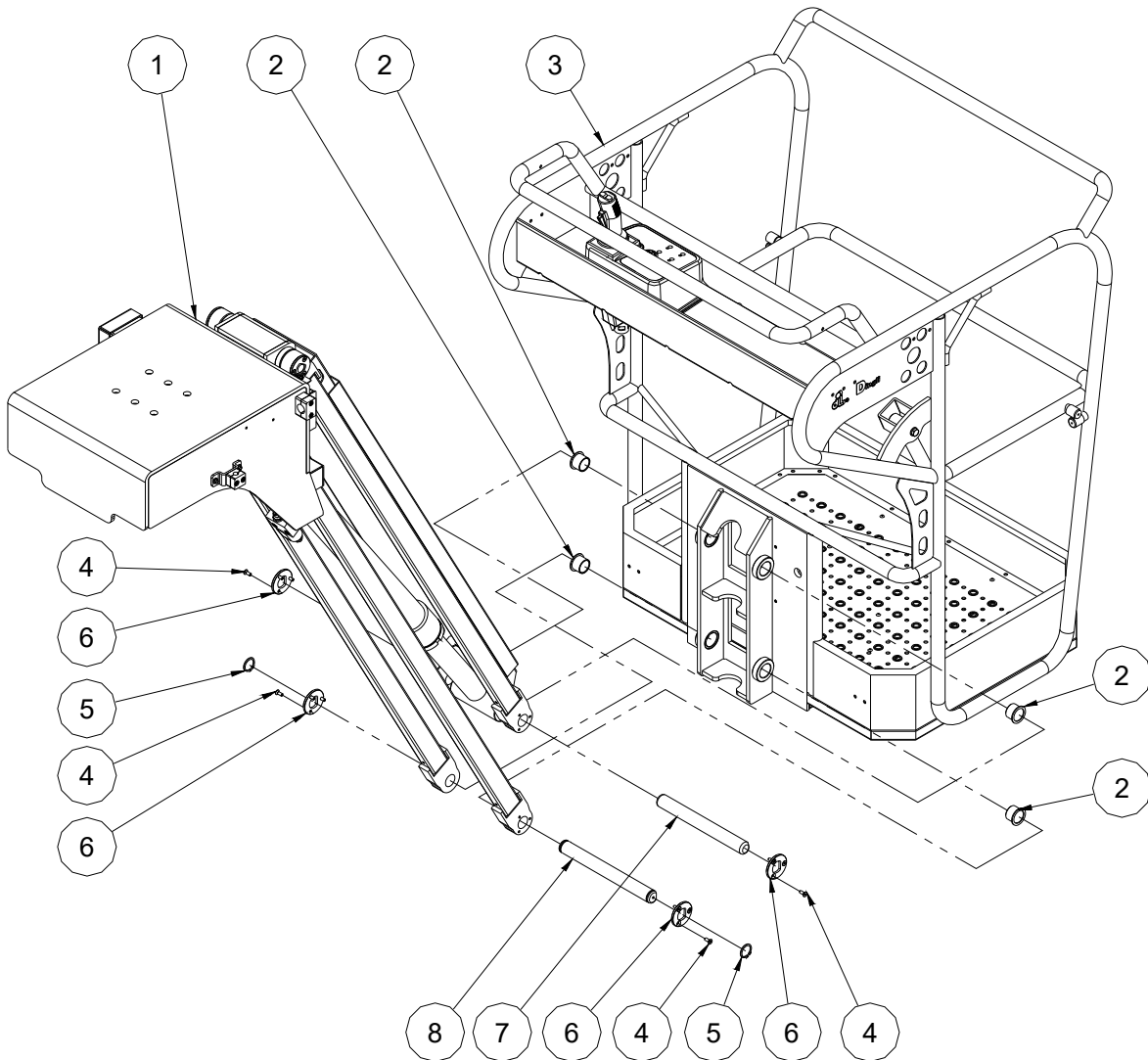
401.1 Platform and Mast Installation



401.1 Platform and Mast Installation

Item	Part No.	Description	Qty.
1		Platform and jib assembly (refer to 402.1)	1
2	00004993	Bolt GB/T 5786 M16×1.5×45	6
3	00001035	Washer GB/T 93 16	6
4	00000997	Washer GB/T 97.1 16	6

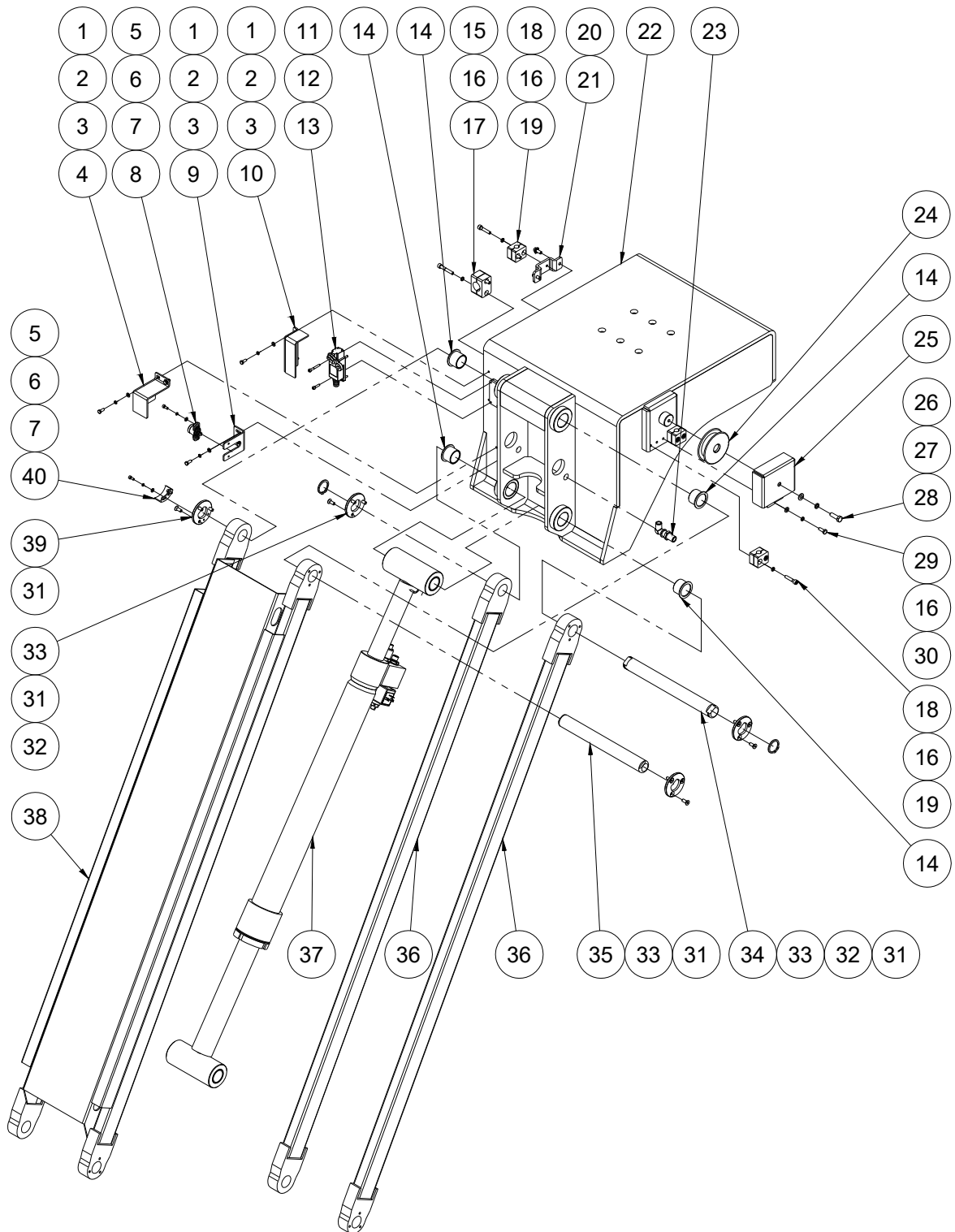
402.1 Platform and Jib Assembly



402.1 Platform and Jib Assembly

Item	Part No.	Description	Qty.
1		Jib assembly (refer to 403.1)	1
2	00005022	8822-3025 Bearing	8
3		Platform assembly (refer to 404.1)	1
4	00000830	Screw GB/T 70.3 M6×16	24
5	00000783	Circlips JB/ZQ 4342-30	4
6	10006259	Pin fixing plate	7
7	10006261	Pin	2
8	10006271	Pin	1

403.1 Jib Assembly



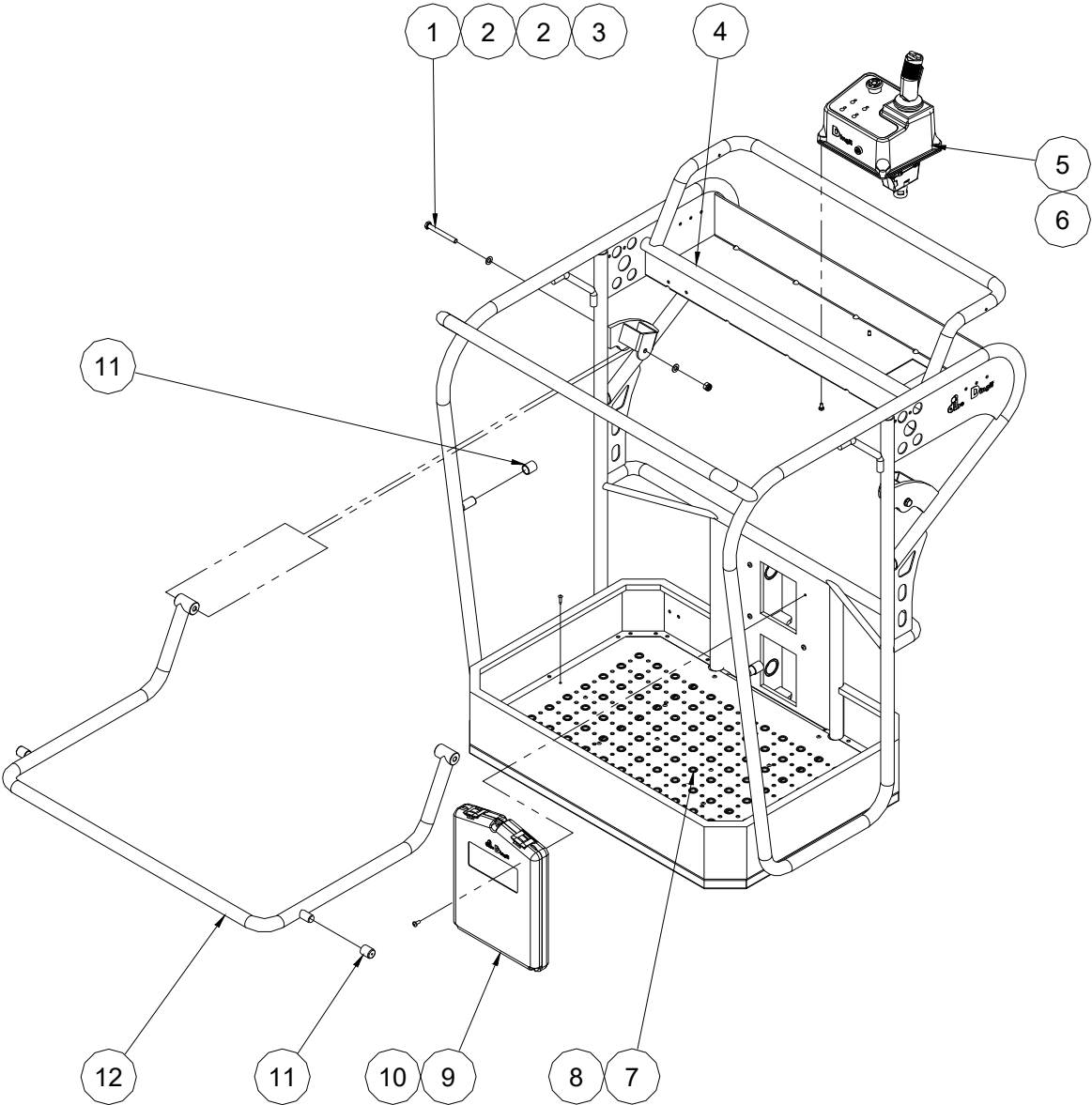
403.1 Jib Assembly

Item	Part No.	Description	Qty.
1	00002246	Bolt GB/T 5783 M5×12	6
2	00000606	Washer GB/T 93 5	6
3	00000605	Washer GB/T 97.1 5	6
4	10006289	Sensor cover	1
5	00002002	Screw GB/T 70.1 M4×10	4
6	00000779	Washer GB/T 93 4	4
7	00000778	Washer GB/T 97.1 4	4
8	00005018	Rotary sensor	1
9	10006269	Sensor bracket	1
10	10006285	Switch cover	1
11	00000604	Screw GB/T 70.1 M4×16	2
12	00002415	Screw GB/T 70.1 M4×30	2
13	00000748	Limit switch	1
14	00005022	8822-3025 Bearing	4
15	00004418	Screw GB/T 70.1 M6×40	2
16	00000621	Washer GB/T 93 6	9
17	00000281	Wire clip	1
18	00001042	Screw GB/T 70.1 M6×30	6
19	00005063	Wire clip	3
20	00002865	Bolt QC/T 340 M6×14	2
21	10006282	Clip bracket	1
22	10006201	Mast top	1
23	00003867	Elbow	1
24	10006272	Pulley	1
25	10006281	Cover	1
26	00000608	Washer GB/T 97.1 8	1
27	00000609	Washer GB/T 93 8	1
28	00000993	Bolt GB/T 5783 M8×25	1
29	00000818	Bolt GB/T 5783 M6×16	1

403.1 Jib Assembly

Item	Part No.	Description	Qty.
30	00000620	Washer GB/T 97.1 6	1
31	00000830	Screw GB/T 70.3 M6×16	12
32	00000783	Circlips JB/ZQ 4342-30	2
33	10006259	Pin fixing plate	3
34	10006262	Pin	1
35	10006261	Pin	1
36	10006245	Lower tie rod	2
37		Jib cylinder assembly (without seal kit) (refer to 502.1)	1
38	10006248	Upper tie rod	1
39	10006260	Pin fixing plate	1
40	10006263	Signal plate	1

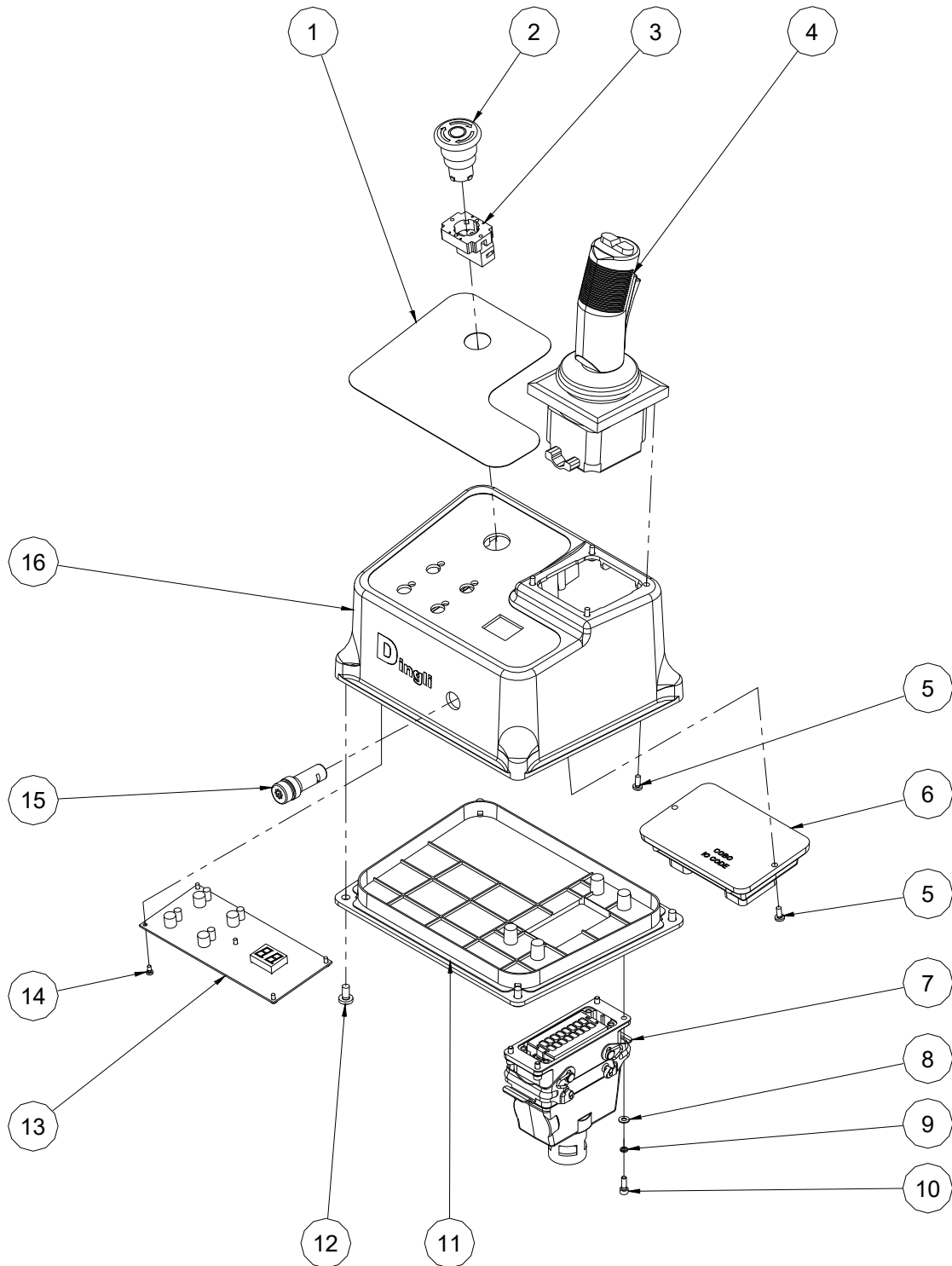
404.1 Platform Assembly



404.1 Platform Assembly

Item	Part No.	Description	Qty.
1	00000633	Bolt GB/T 5782 M10×90	2
2	00000615	Washer GB/T 97.1 10	4
3	00000623	Nut GB/T 6182 M10	2
4	10006213	Platform weldment	1
5	00005065	Platform control box assembly (refer to 405.1)	1
6	00001060	Screw GB/T 818 M6×12 - H	4
7	10006258	Platform deck plate	1
8	00001991	Rivet GB/T 12618.4 4.8×16	14
9	50000555	Manual box	1
10	00001231	Screw GB/T 818 M6×14 - H	4
11	10006270	Rubber bushing	4
12	10006252	Opening guard rail	1

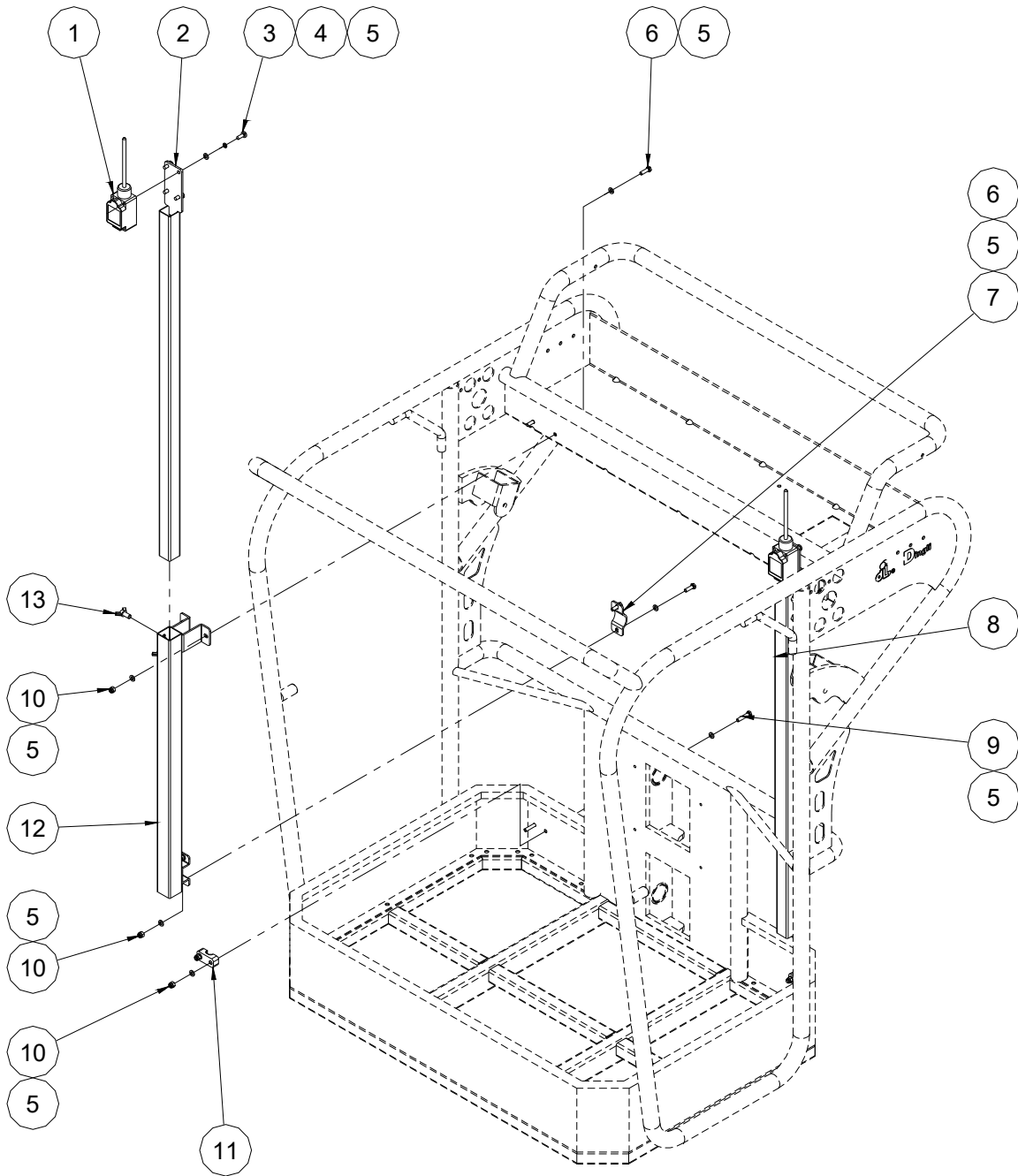
405.1 Platform Control Box Assembly



405.1 Platform Control Box Assembly

Item	Part No.	Description	Qty.
1	09140005	Decal, Platform control panel	1
2	00000754	Red mushroom head	1
3	00000752	Base with 1 NC contact	1
4	00000657	Joystick	1
5	00002026	Screw GB/T 818 M4×10 - H	6
6	00005069	IO-CORE Mode	1
7	00002720	Connector	1
--	00002716	Hood	1
--	00002717	Female insert	1
--	00002718	Male insert	1
--	00002719	Housing	1
--	00004899	Water-proof joint M25	1
8	00000778	Washer GB/T 97.1 4	4
9	00000779	Washer GB/T 93 4	4
10	00001054	Screw GB/T 70.1 M4×12	4
11	00005066	Cover bottom	1
12	00001060	Screw GB/T 818 M6×12 - H	4
13	00005068	Main board	1
14	00003548	Screw GB/T 818 M3×6 - H	5
15	00005070	Alarm	1
16	00005067	Enclosure	1

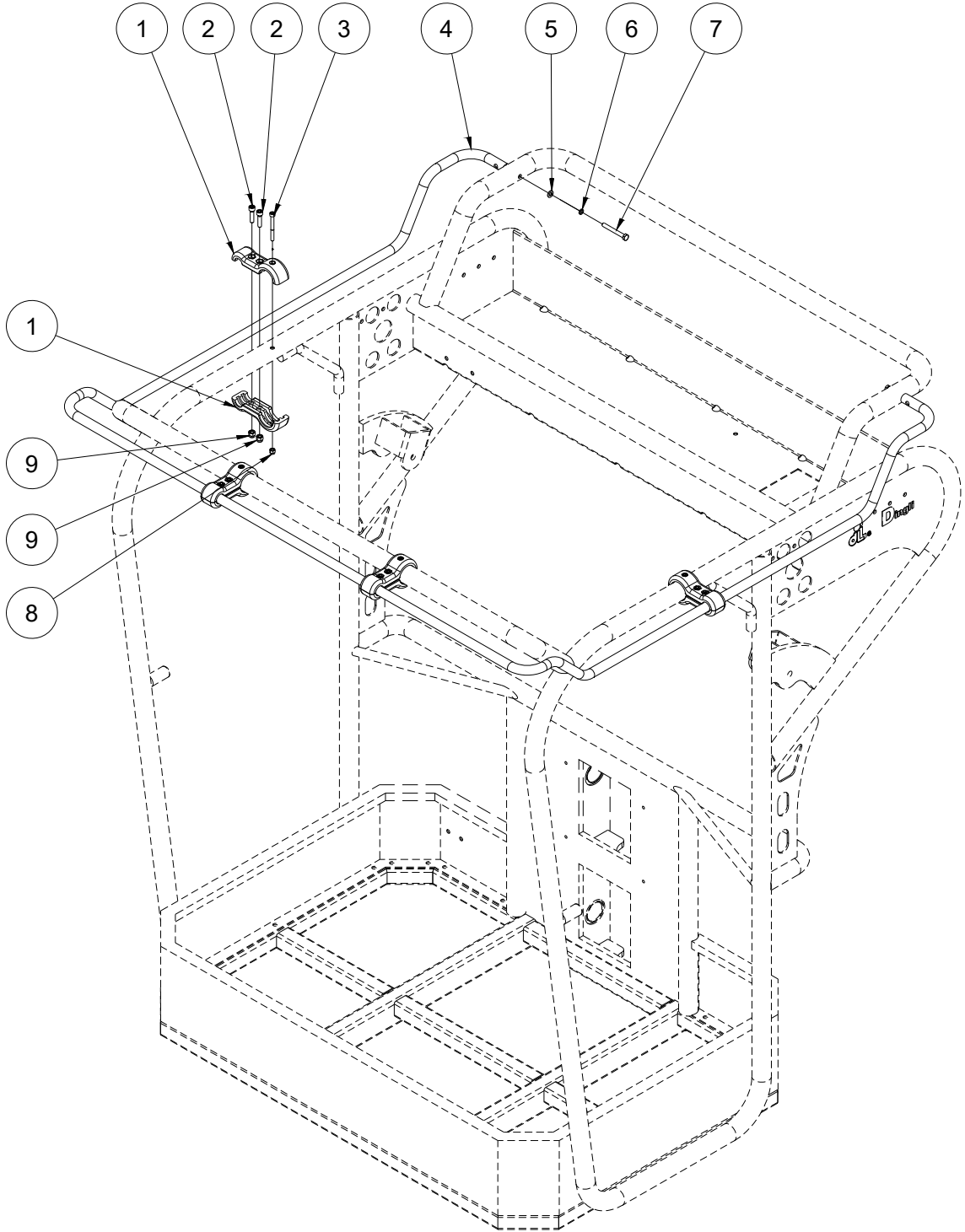
406.1 Anti Collision Device (Option)



406.1 Anti Collision Device (Option)

Item	Part No.	Description	Qty.
1	00002606	Limit switch	2
2	10001704	Switch rod	2
3	00001986	Screw GB/T 818 M6×16 - H	8
4	00000621	Washer GB/T 93 6	8
5	00000620	Washer GB/T 97.1 6	32
6	00000743	Bolt GB/T 5783 M6×20	8
7	10007016	Clamp	2
8	10007010	Bracket	1
9	00000775	Bolt GB/T 5783 M6×30	4
10	00001033	Nut GB/T 6182 M6	12
11	10007015	Wire clip	2
12	10007014	Bracket	1
13	00002586	Screw M8×16	4

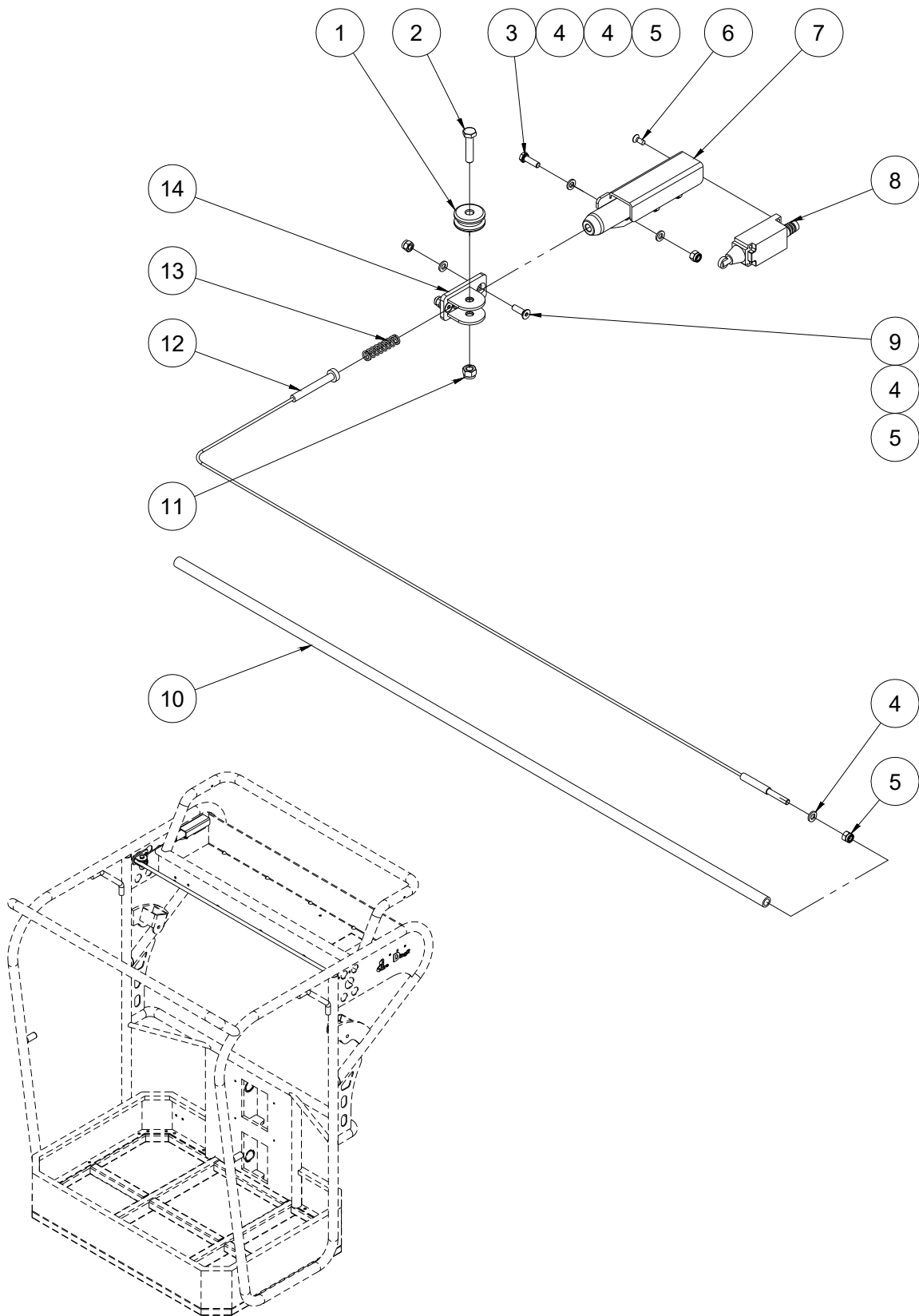
407.1 Anti Crush Device 1(Option)



407.1 Anti Crush Device 1 (Option)

Item	Part No.	Description	Qty.
1	10007023	Clamp	8
2	00001034	Screw GB/T 70.1 M6×25	8
3	00002505	Screw GB/T 70.1 M5×50	4
4	10007019	Out rail	1
5	00000620	Washer GB/T 97.1 6	2
6	00000621	Washer GB/T 93 6	2
7	00002025	Bolt GB/T 5782 M6×50	2
8	00000613	Nut GB/T 6182 M5	4
9	00001033	Nut GB/T 6182 M6	8

408.1 Anti Crush Device 2(OPTION)

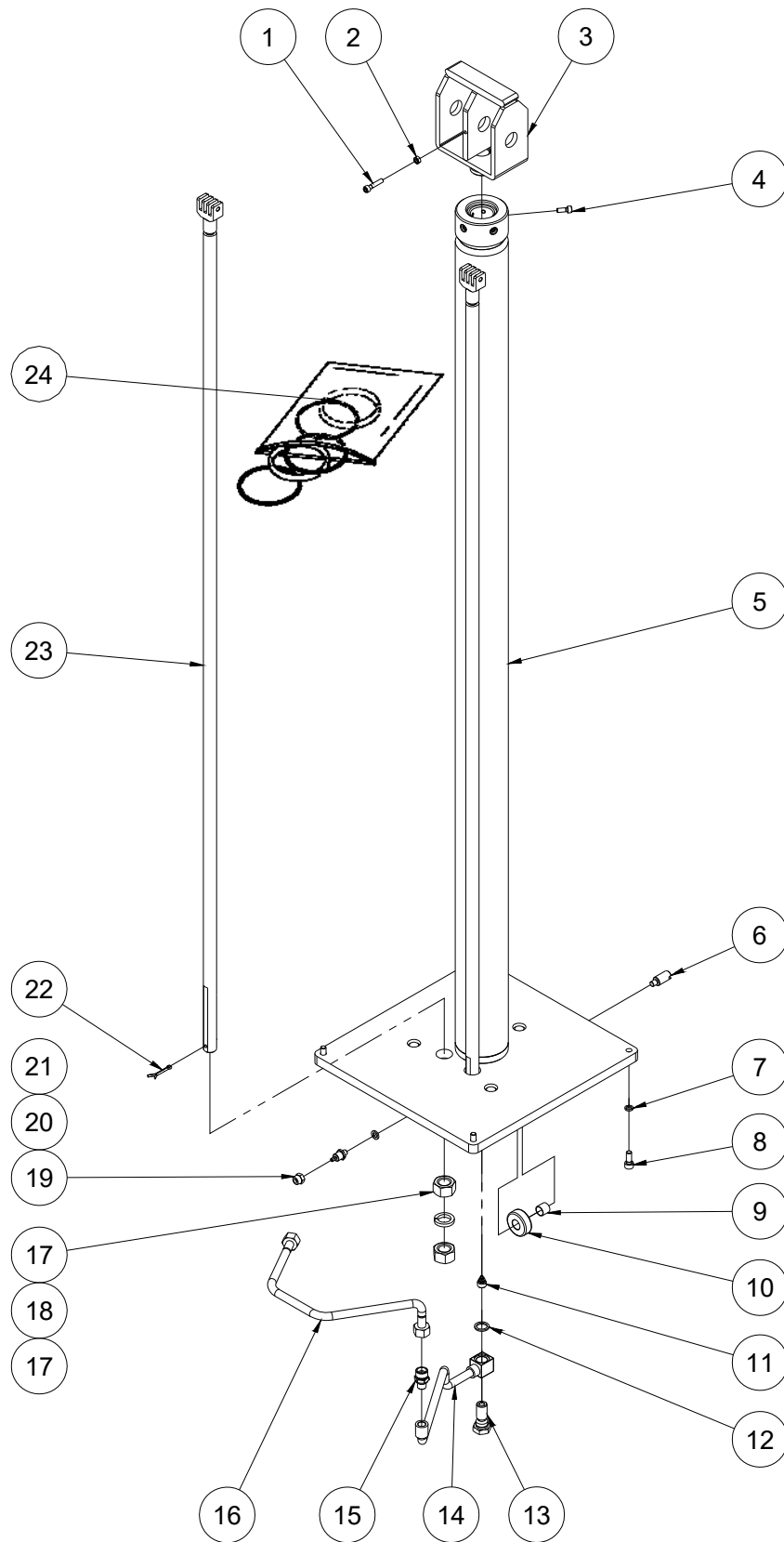


408.1 Anti Crush Device 2 (Option)

Item	Part No.	Description	Qty.
1	10005599	Pulley	1
2	00002488	Bolt GB/T 5783 M8×35	1
3	00000743	Bolt GB/T 5783 M6×20	3
4	00000620	Washer GB/T 97.1 6	9
5	00001033	Nut GB/T 6182 M6	6
6	00002337	Screw GB/T 819 M5×12 - H	4
7	10007001	Wire rope bracket	1
8	00002419	Limit switch	1
9	00000831	Screw GB/T 70.3 M6×20	2
10	10007005	Sheath	1
11	00001163	Nut GB/T 6182 M8	1
12	10007004	Wire rope	1
13	10005801	Spring	1
14	10007006	Pulley bracket	1

Section 5 Hydraulic System

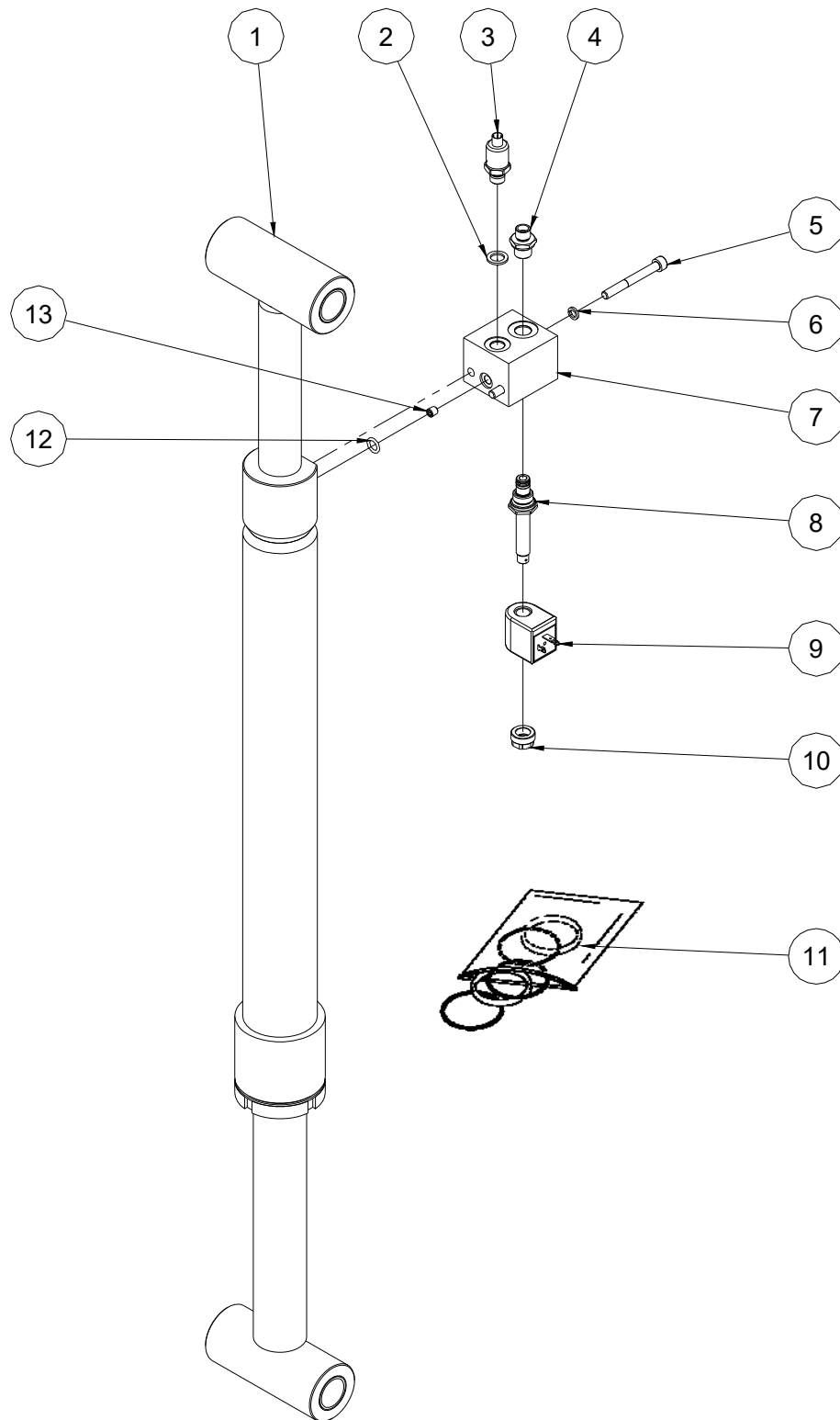
501.1 Lift Cylinder Assembly



501.1 Lift Cylinder Assembly

Item	Part No.	Description	Qty.
1	00001042	Screw GB/T 70.1 M6×30	1
2	00002247	Nut GB/T 6170 M6	1
3	10005935	Pulley bracket	1
4	00000876	Screw GB/T 70.1 M6×16	5
5	10007331	Lift cylinder	1
6	10005933	Pin	3
7	00000609	Washer GB/T 93 8	4
8	00001061	Screw GB/T 70.1 M8×20	4
9	00005159	8812-141614 Bearing	3
10	10005934	Roller	3
11	00004905	Flow control valve	1
12	00001335	Washer JB/T 982 16	1
13	10005589	Fitting	1
14	10005866	Pipe	1
15	00001503	Straight fitting	1
16	10005867	Pipe	1
17	00002272	Nut GB/T 6170 M20	4
18	00002219	Washer GB/T 93 20	2
19	10000462	Nut	1
20	10000411	Fitting	1
21	00001330	Washer JB/T 982 8	1
22	00002405	Cotter pin GB/T 91 4×32	2
23	10005940	Chain terminal	2
24	00005083	Seal kit	1

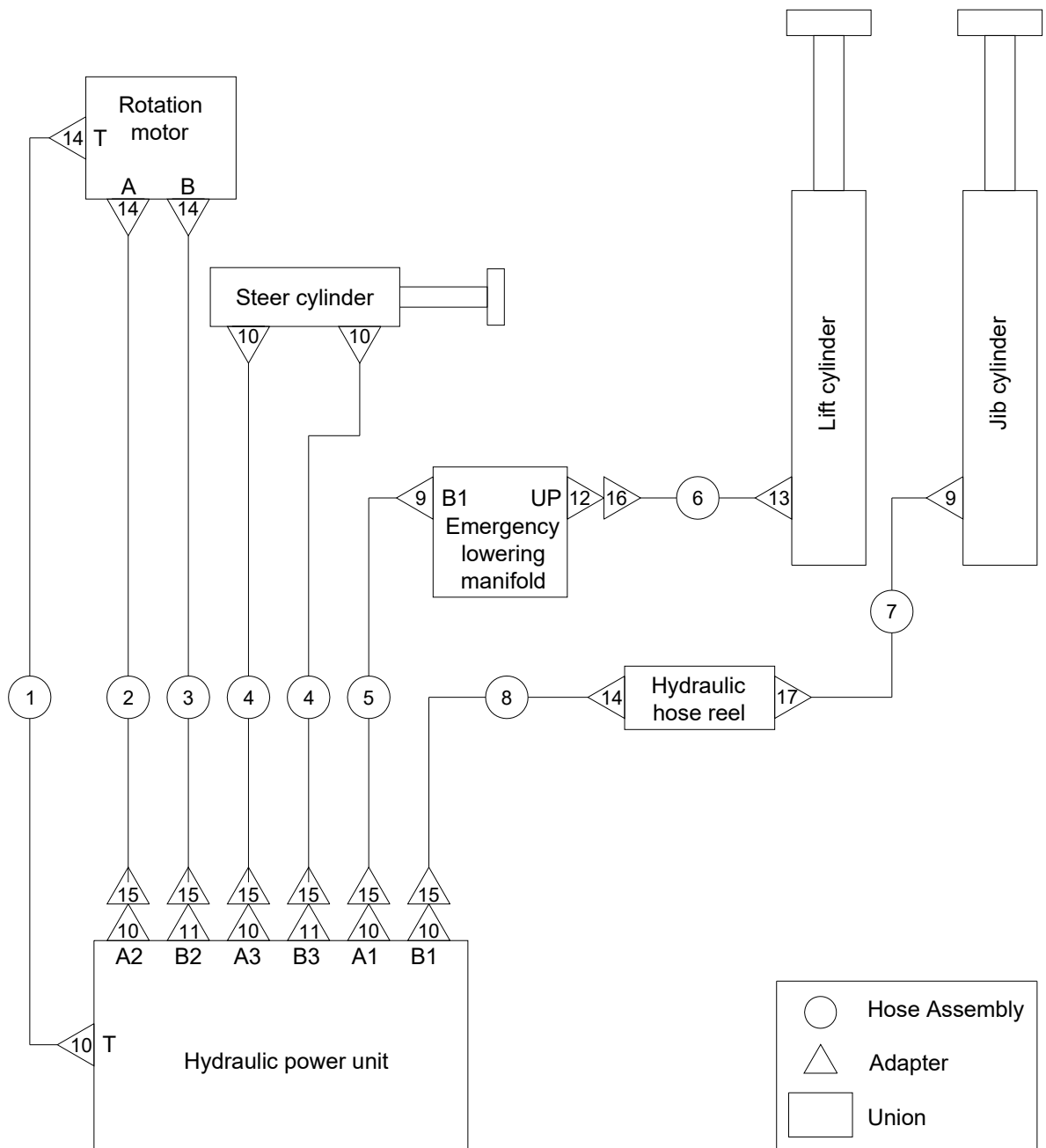
502.1 Jib Cylinder Assembly



502.1 Jib Cylinder Assembly

Item	Part No.	Description	Qty.
1	10005918	Jib cylinder	1
2	00002518	Washer JB/T 982 13	1
3	00002418	Pressure sensor	1
4	00002921	Straight fitting	1
5	00003135	Screw GB/T 70.1 M8×70	2
6	00000609	Washer GB/T 93 8	2
7	00004830	Valve body	1
8	00004831	Solenoid valve spool	1
9	00003597	Coil	1
10	00003352	Nut	1
11	00005177	Seal kit	1
12	00001706	O-ring As568A 10.77×2.62	1
13	00003592	Orifice M8×1_Φ1.0	1

503.1 Hydraulic Hoses and Fittings

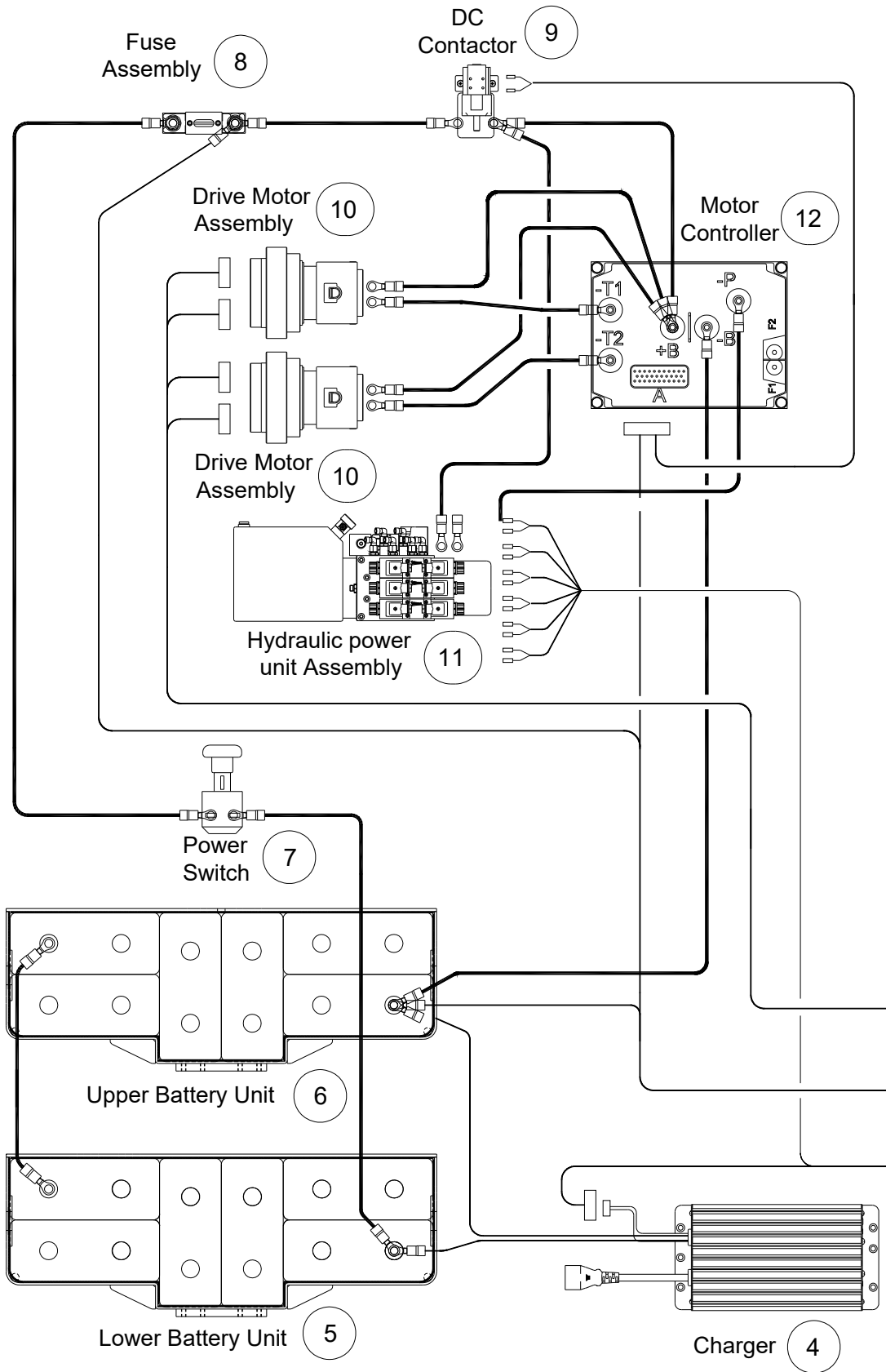


503.1 Hydraulic Hoses and Fittings

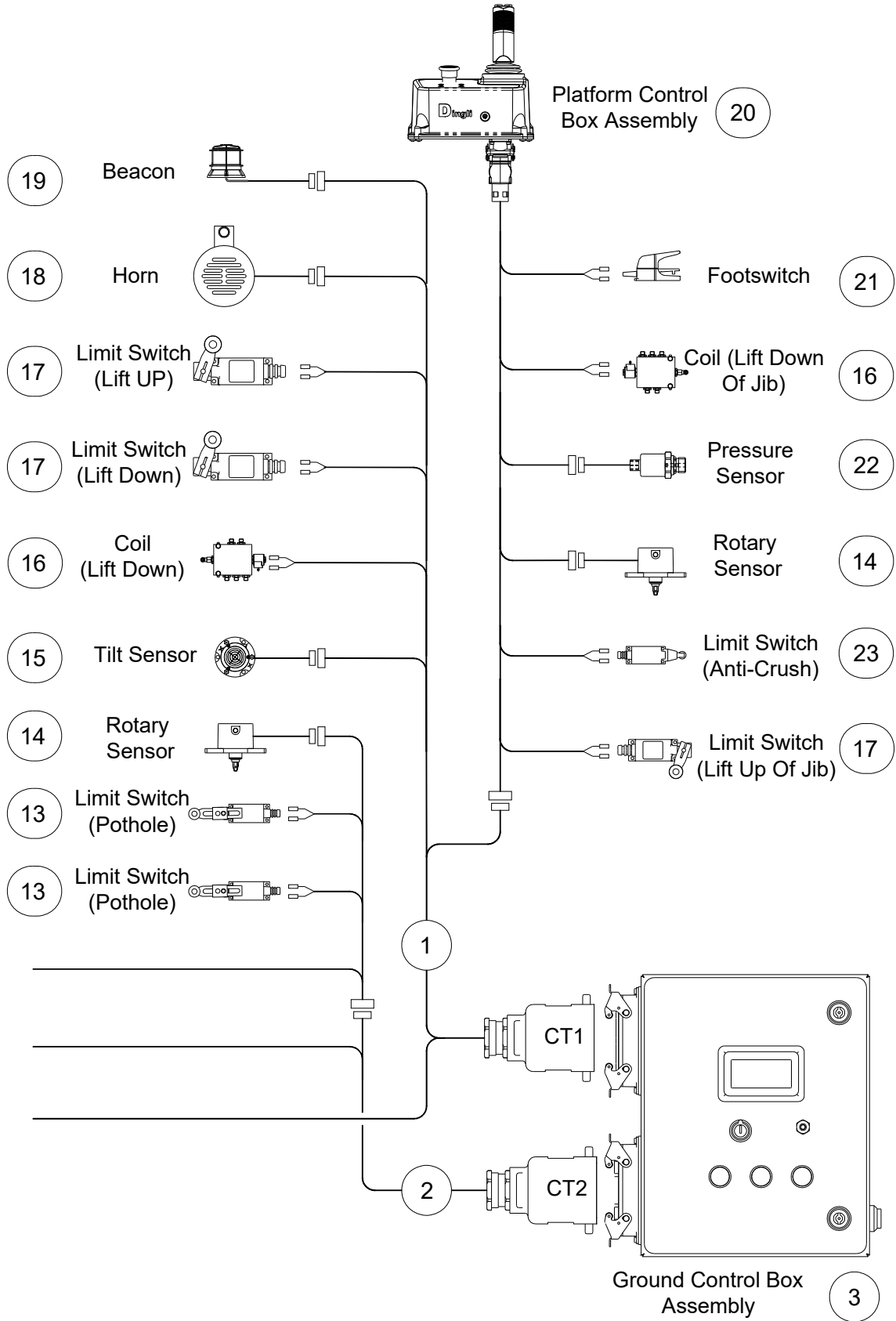
Item	Part No.	Description	Qty.
1	00005017	Hose assembly	1
2	00005020	Hose assembly	1
3	00005021	Hose assembly	1
4	00005025	Hose assembly	2
5	00005030	Hose assembly	1
6	10005867	Pipe	1
7	00005042	Hose assembly	1
8	00005036	Hose assembly	1
9	00002921	Straight fitting	2
10	00001316	Straight fitting	7
11	00004904	Straight fitting	2
12	00001294	Straight fitting	1
13	00001503	Straight fitting	1
14	00001315	Straight fitting	4
15	00001832	Elbow	6
16	00001834	Elbow	1
17	00003867	Elbow	1

Section 6 Electrical System

601.1 Electrical Harness



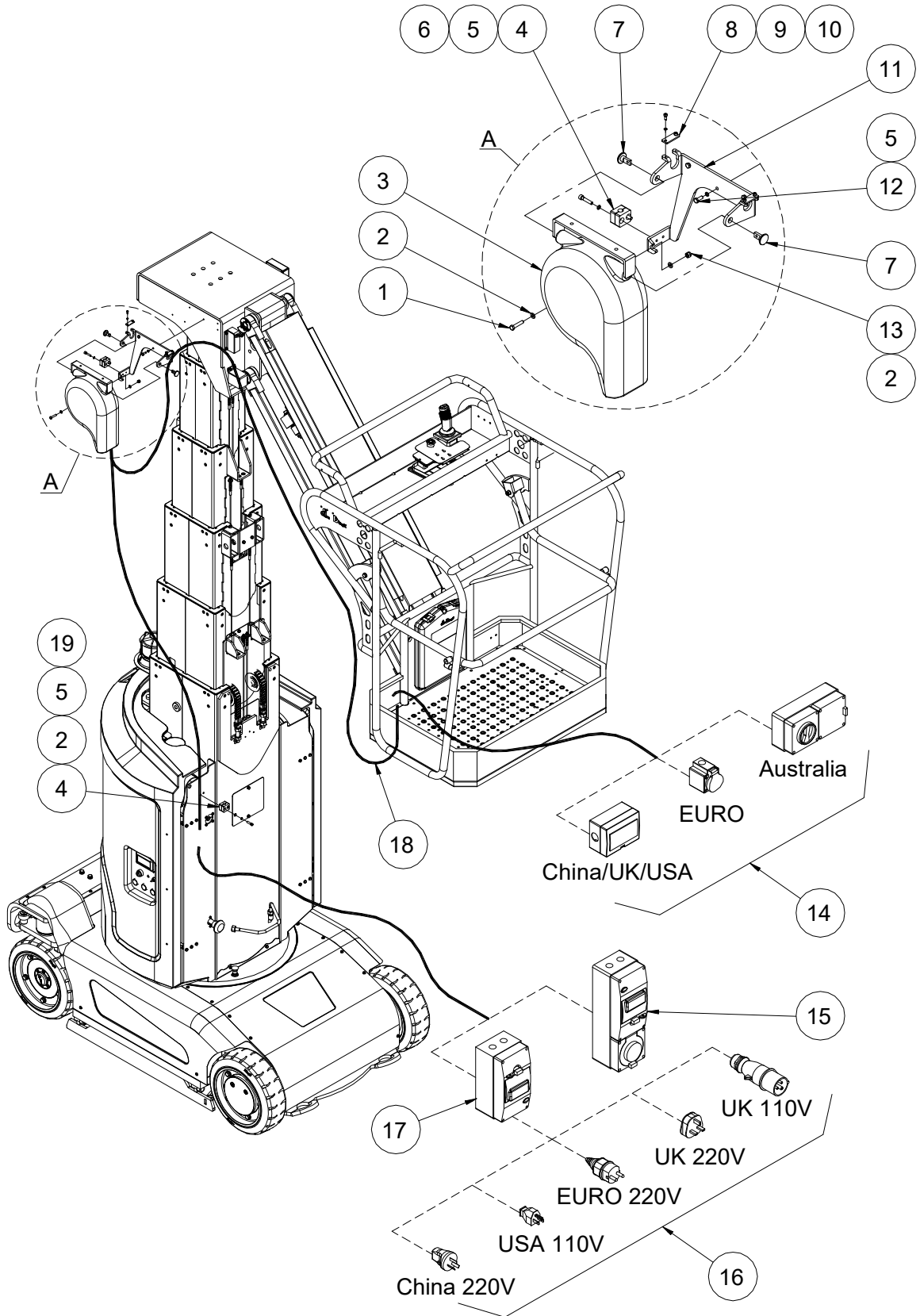
601.1 Electrical Harness



601.1 Electrical Harness

Item	Part No.	Description	Qty.
1	00004774	CT1 harness	1
2	00004677	CT2 harness	1
3		Ground control box assembly (refer to 209.1)	1
4		Charger (refer to 208.1)	1
5		Lower battery unit (refer to 203.1)	1
6		Upper battery unit (refer to 203.1)	1
7		Power switch (refer to 208.1)	1
8		250A Fuse assembly (refer to 208.1)	1
9		DC Contactor (refer to 208.1)	1
10		Drive motor assembly (refer to 102.1)	2
11		Hydraulic power unit assembly (refer to 205.1)	1
12		Motor controller (refer to 208.1)	1
13		Limit switch (refer to 102.1)	2
14		Rotary sensor (refer to 103.1, 403.1)	2
15		Tilt sensor (refer to 201.1)	1
16		Coil (refer to 207.1, 502.1)	2
17		Limit switch (refer to 208.1, 403.1)	3
18		Horn (refer to 208.1)	1
19		Beacon (refer to 203.1)	1
20		Platform control box assembly (refer to 405.1)	1
21		Footswitch (refer to 404.1)	1
22		Pressure sensor (refer to 502.1)	1
23		Limit switch (refer to 408.1)	1

602.1 Power to Platform

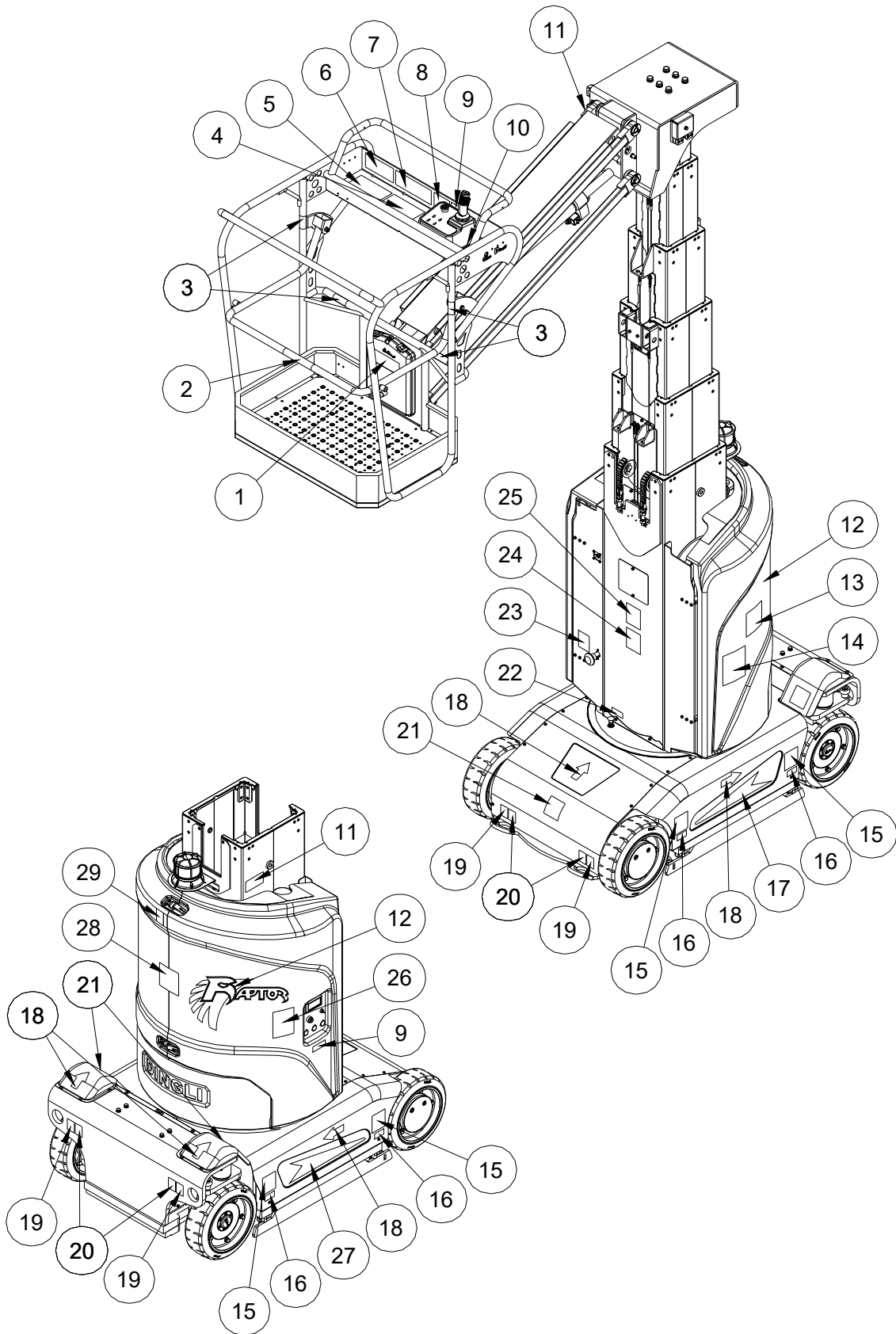


602.1 Power to Platform

Item	Part No.	Description	Qty.
1	00000775	Bolt GB/T 5783 M6×30	1
2	00000620	Washer GB/T 97.1 6	3
3	00002927	Cable reel	1
4	00005063	Wire clip	2
5	00000621	Washer GB/T 93 6	7
6	00001042	Screw GB/T 70.1 M6×30	2
7	10006292	Pin	2
8	10006294	Press plate	2
9	00000779	Washer GB/T 93 4	4
10	00002002	Screw GB/T 70.1 M4×10	4
11	10006283	Reel bracket	1
12	00000818	Bolt GB/T 5783 M6×16	3
13	00001033	Nut GB/T 6182 M6	1
14	00002617	AC socket (Australia)	1
	00002709	AC socket (European)	1
	00000668	AC socket (China/UK/USA)	1
15	00003147	AC plug (Australia 220V)	1
16	00003148	AC plug (China 220V)	1
	00003149	AC plug (USA 110V)	1
	00003151	AC plug (European 220V)	1
	00003150	AC plug (UK 220V)	1
	00002615	AC plug (UK 110V)	1
17	00002634	Circuit breaker (Option)	1
18	00005378	Wire cable, platform AC power	1
19	00001034	Screw GB/T 70.1 M6×25	2

Section 7 Decal

701.1 Decal



701.1 Decal

Item	Part No.	Description	Qty.
1	09340001	Decal, Notice-Keep the manual with the machine	1
2	09340016	Decal, Instructions-Open/close	1
3	09440059	Decal, Label-Lanyard anchorage point	4
4	09440157	Decal, Warning-Tip-over hazard	1
5	09440159	Decal, Warning-Crushing hazard/ Falling hazard	1
6	09440153	Decal, Danger-Tip-over hazard, tilt-alarm	1
7	09440054	Decal, Label-Capacity 200kg	1
8	09440155	Decal, Danger-Electrocution hazard	1
9	09340003	Decal, Instructions-Refer the operator to the instructions for use	2
10	09440009	Decal, Caution-Max. manual force 400N (Indoor) 200N (Outdoor)	1
11	09430018	Decal, Danger-Do not alter or disable limit switch	2
12	09920007	Decal, Label-Raptor	2
13	09410071	Decal, Warning-Injection hazard	1
14	09320005	Decal, Symbols-Emergency operating instructions	1
15	09410081	Decal, Caution-Forklift pockets	4
16	09310166	Decal, Instructions-Maximum wheel load 1600kg	4
17	09910013	Decal, Label-MV095J	1
18	09310047	Decal, Instructions-Directional arrows	5
19	09310003	Decal, Instructions-Tie down point	4
20	09310002	Decal, Instructions-Lift point	4
21	09410031	Decal, Warning-Do not stepping	3
22	09310004	Decal, Instructions-Emergency lower	1
23	09310006	Decal, Notice-Main power switch operation	1
24	09420006	Decal, Warning-Crushing hazard	1
25	09420017	Decal, Danger-Do not stand	1
26	09410003	Decal, Warning-Inspected and operation properly	1
27	09910014	Decal, Label-MV095J	1
28	09410001	Decal, Danger-Explosion/burn hazard	1

701.1 Decal

Item	Part No.	Description	Qty.
29	09420005	Decal, Warning-Collision hazard	1

701.1 Decal

① 09340001



③ 09440059



⑥ 09440153



② 09340016



④ 09440157



⑦ 09440054



⑧ 09440155



⑤ 09440159



⑨ 09340003



⑩ 09440009



⑫ 09920007



⑬ 09410071



⑪ 09430018



701.1 Decal

<p>14 09320005</p>	<p>15 09410081</p>	<p>17 09910013</p>		
<p>19 09310003</p>	<p>20 09310002</p>	<p>16 09310166</p>	<p>18 09310047</p>	<p>21 09410031</p>
<p>23 09310006</p>	<p>24 09420006</p>	<p>22 09310004</p>	<p>25 09420017</p>	
<p>26 09410003</p>	<p>27 09910014</p>	<p>28 09410001</p>	<p>29 09420005</p>	