

# SELF-PROPELLED SCISSOR LIFTS

## PARTS MANUAL

( For S036-RS )



### WARNING

THE MANUFACTURER SHALL NOT BE HELD LIABLE IN CASE OF FAULTS OR ACCIDENTS DUE TO NEGLIGENCE, INCAPACITY, INSTALLATION BY UNQUALIFIED TECHNICIANS AND IMPROPER USE OF THE MACHINE

DO NOT OPERATE THIS MACHINE UNTIL YOU READ AND UNDERSTAND ALL THE DANGERS, WARNINGS AND CAUTIONS IN THIS MANUAL

Part Number: SM0117221A\_Rev1.0

Zhejiang Dingli Machinery Co., Ltd.

First Edition, August 2018 Printing



---

## Table of Contents

### Section 1 Chassis

101.1	Steer Linkage and Wheels Assembly .....	2
102.1	Drive Wheel Assembly .....	5
103.1	Pothole Protection Assembly .....	7
104.1	Battery Pack Module .....	9
105.1	Hydraulic power unit .....	12
106.1	Motor Controller Assembly .....	13
107.1	Ground Control Assembly .....	14
108.1	Ladder and Accessories.....	16

### Section 2 Scissor

201.1	Scissor Assembly.....	20
-------	-----------------------	----

### Section 3 Platform

301.1	Main Platform Assembly .....	24
302.1	Platform Extension Assembly .....	26
303.1	Platform Locking Device Assembly.....	28
304.1	Platform Control Box Assembly .....	29

### Section 4 Hydraulic System

401.1	Lift Cylinder Assembly .....	32
402.1	Hydraulic Hoses and Fittings.....	34

### Section 5 Electrical System

501.1	Electrical Harness .....	36
502.1	Power to Platform .....	39

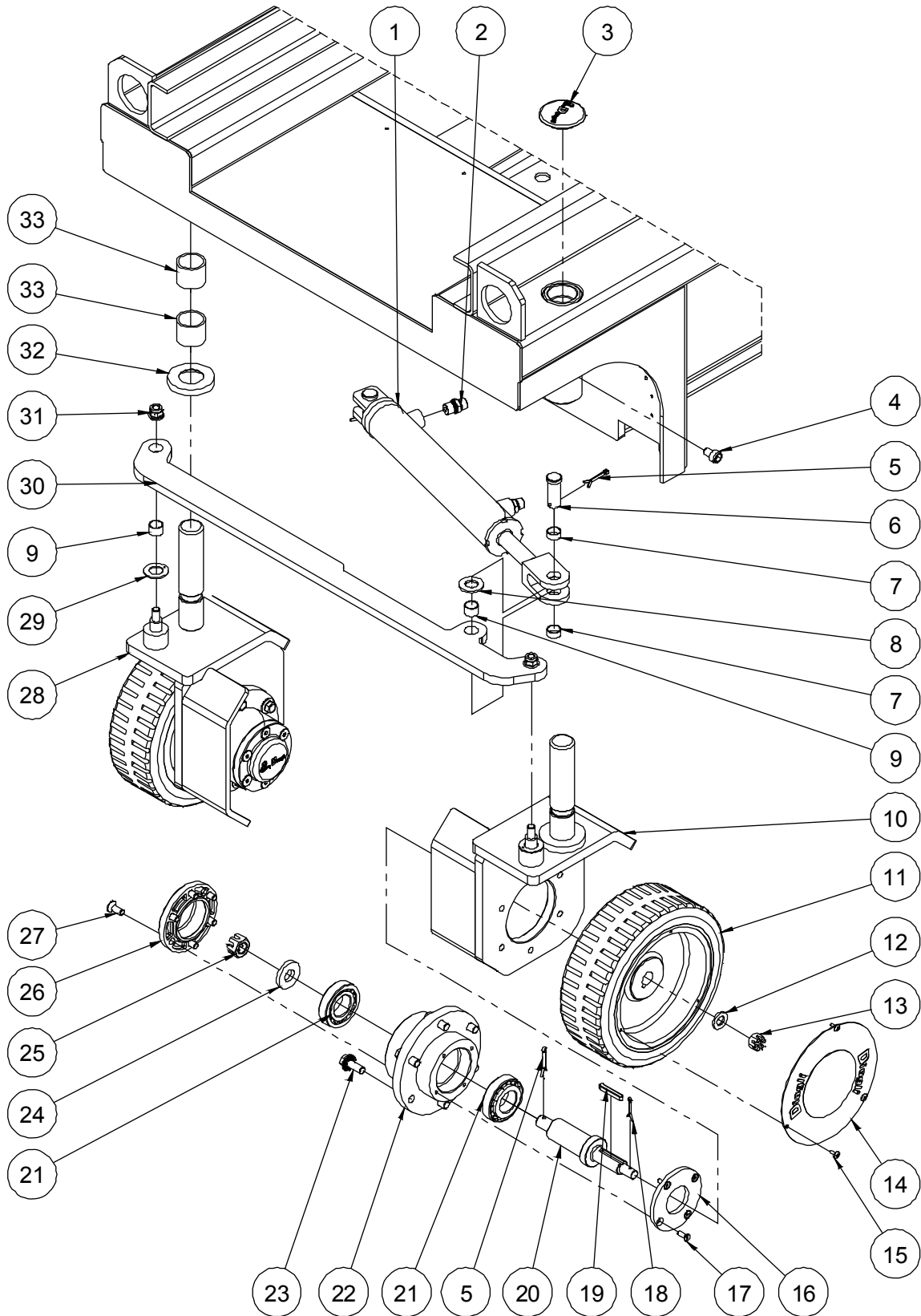
### Section 6 Decal

601.1	Decal .....	42
-------	-------------	----



# Section 1 Chassis

### 101.1 Steer Linkage and Wheels Assembly



**101.1 Steer Linkage and Wheels Assembly**

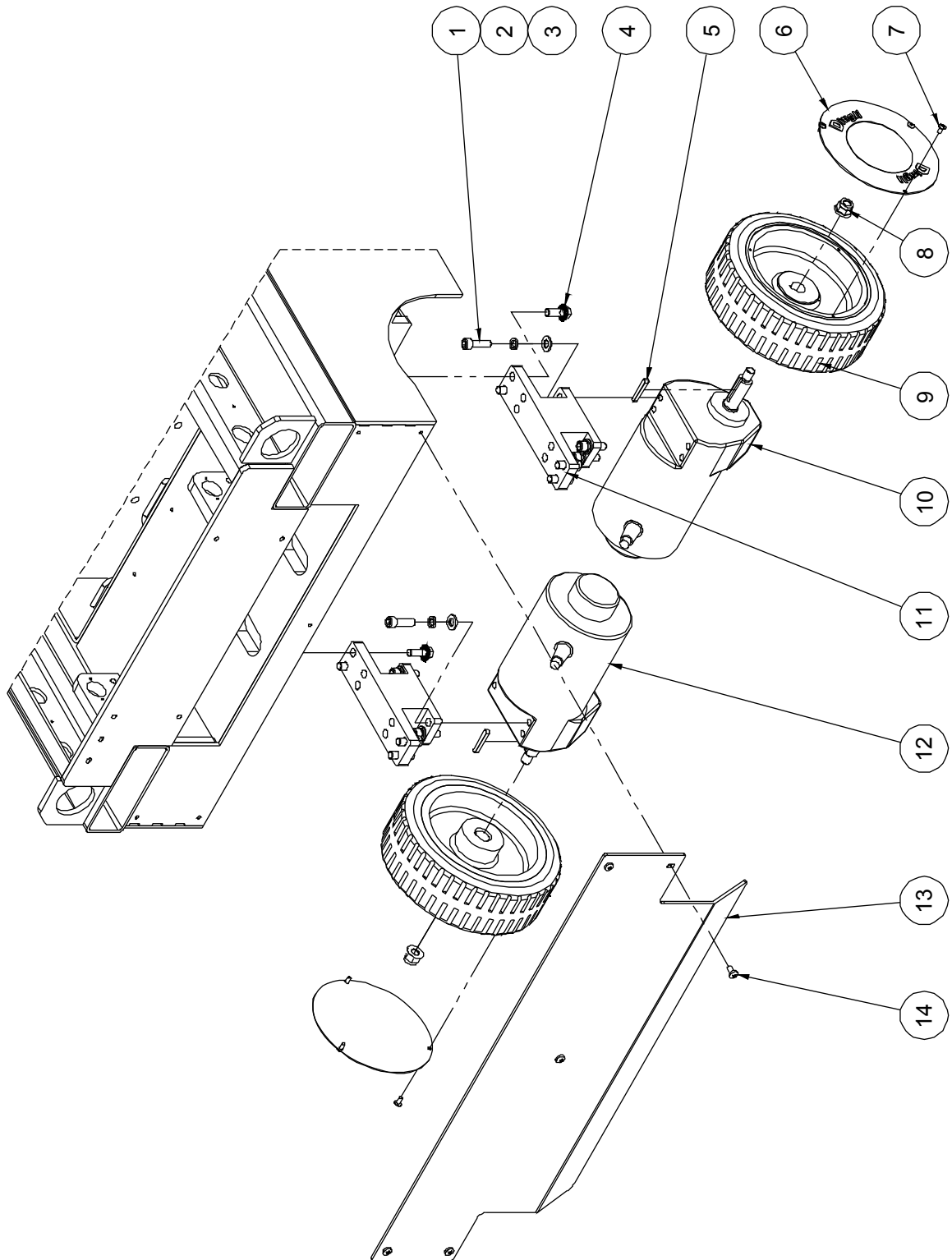
Item	Part No.	Description	Qty.
1	10001396	Steer cylinder assembly (without seal kit)	1
--	00003068	Seal kit	1
2	00001290	Straight fitting	2
3	10001568	Cover	2
4	10001073	Screw	2
5	00002405	Cotter pin GB/T 91 4×32	4
6	00000686	891-1634.5 Pin	2
7	00000350	8812-161808 Bearing	4
8	10001074	Washer	2
9	00000351	8812-161812 Bearing	4
10	10001513	Steer yoke weldment	1
11	10001535	Wheel	2
12	00000814	Washer GB/T 97.1 12	2
13	00002402	Nut GB/T 6181 M12	2
14	10001553	Cover	2
15	00001002	Screw GB/T 973 M4×10	6
16	10001502	Bearing cover	2
17	00000822	Screw GB/T 70.3 M5×16	8
18	00002087	Cotter pin GB/T 91 3.2×26	2
19	00000998	Key GB/T 1096 6×6×40	2
20	10001501	Wheel shaft	2
21	00001129	Bearing 30206	4
22	10001503	Connection plate	2
23	00002887	Bolt QC/T 340 M10×25	12
24	10001104	Washer	2
25	00002077	Nut GB/T 9459 M16×1.5	2
26	10000638	Cap	2
27	00000765	Screw GB/T 70.3 M8×20	12
28	10001505	Steer yoke weldment	1

**101.1 Steer Linkage and Wheels Assembly**

<b>Item</b>	<b>Part No.</b>	<b>Description</b>	<b>Qty.</b>
29	00000387	8832-18 Bearing	2
30	10001500	Tie rod	1
31	00002572	Nut GB/T 6183.1 M10	2
32	10001504	Washer	2
33	00000414	8813-323830 Bearing	4



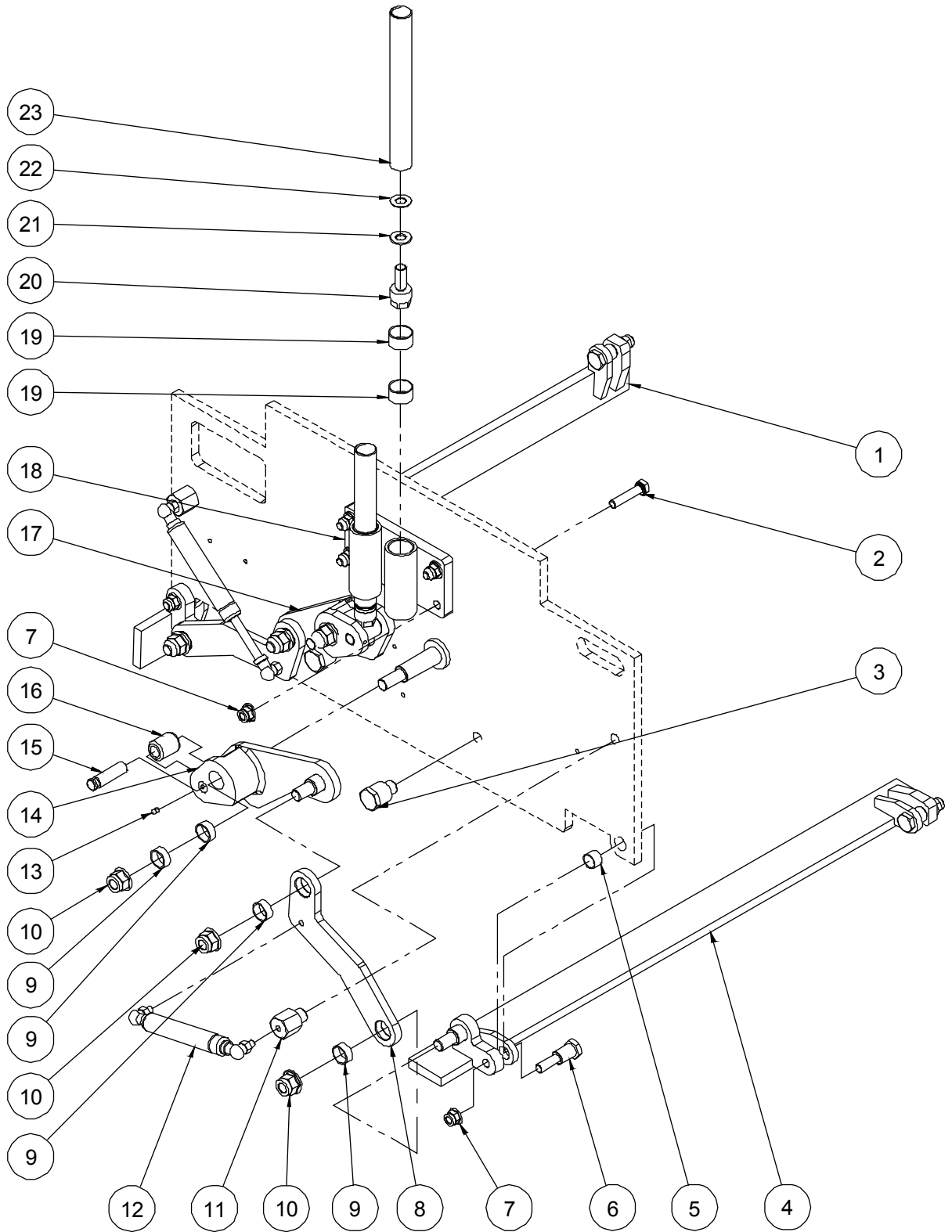
102.1 Drive Wheel Assembly



**102.1 Drive Wheel Assembly**

Item	Part No.	Description	Qty.
1	00001157	3/8-24×1 1/4" Screw ANSI B18.3	8
2	00000679	Washer GB/T 93 10	8
3	00000615	Washer GB/T 97.1 10	8
4	00002887	Bolt QC/T 340 M10×25	8
5	00000998	Key GB/T 1096 6×6×40	2
6	10001553	Cover	2
7	00001002	Screw GB/T 973 M4×10	6
8	00002576	Nut GB/T 6183.1 M12	2
9	10001535	Wheel	2
10	00003094	Right drive motor assembly	1
--	00002407	Right motor	1
--	00003090	Reducer	1
--	00003093	Output shaft	1
--	00003092	Brake	1
11	10001534	Support	2
12	00003095	Left drive motor assembly	1
--	00002408	Left motor	1
--	00003090	Reducer	1
--	00003093	Output shaft	1
--	00003092	Brake	1
13	10001562	Plate	1
14	00001060	Screw GB/T 818 M6×12 - H	5

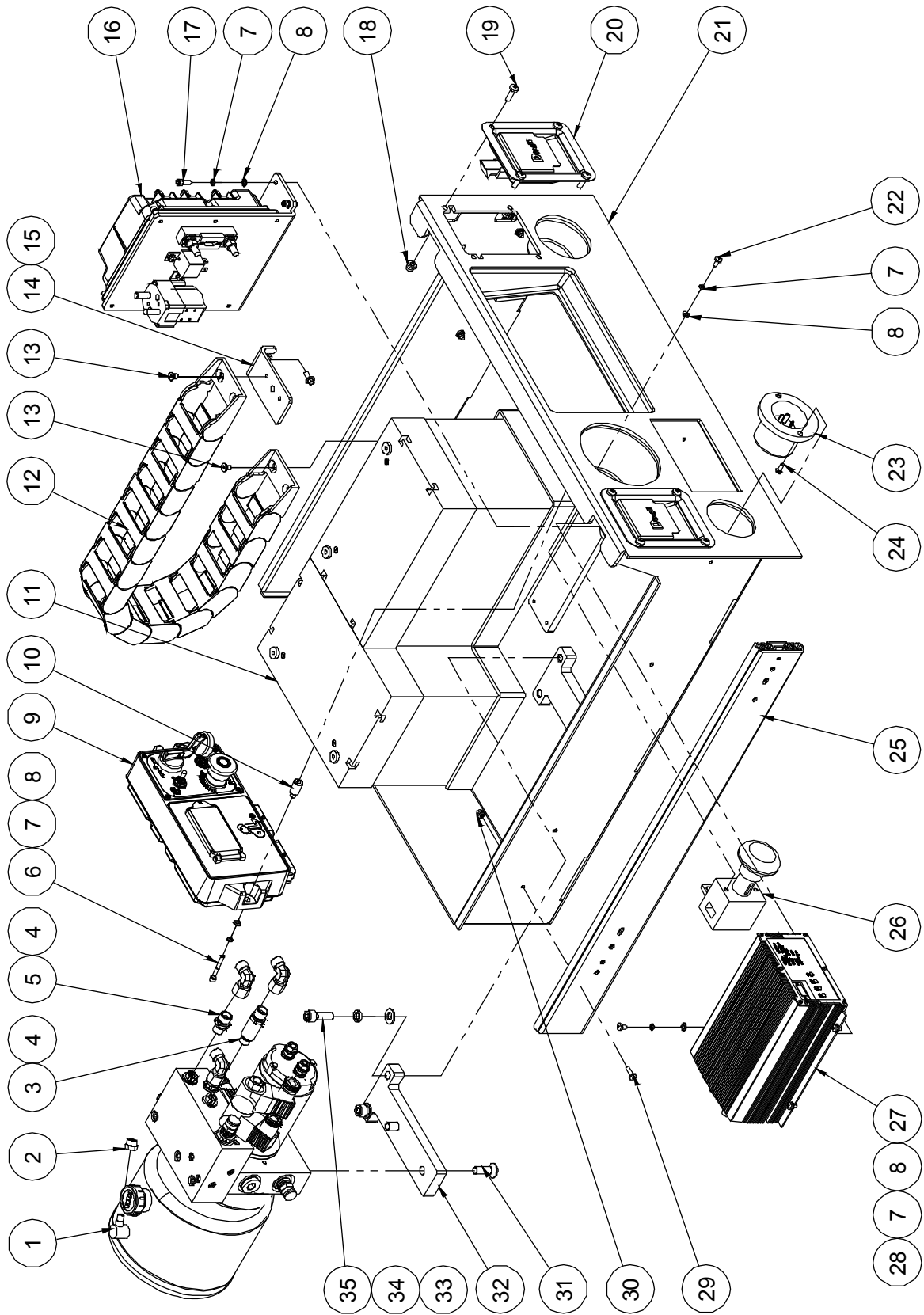
### 103.1 Pothole Protection Assembly



**103.1 Pothole Protection Assembly**

Item	Part No.	Description	Qty.
1	10001483	Pothole guard weldment	1
2	00002411	Bolt GB/T 5783 M10×45	4
3	10001466	Pin	2
4	10001477	Pothole guard weldment	1
5	00000351	8812-161812 Bearing	4
6	10001465	Pin	4
7	00002572	Nut GB/T 6183.1 M10	8
8	10001461	Pothole link plate	2
9	00000356	8812-202309 Bearing	8
10	00002577	Nut GB/T 6183.1 M14	6
11	10001464	Gas shock strut	2
12	10001495	Gas shock	2
13	00001039	Screw GB/T 78 M5×10	2
14	10001467	Linkage weldment	1
15	10001463	Pin	2
16	10001462	Roller	2
17	10001471	Linkage weldment	1
18	10001474	Pothole guide	1
19	00000367	8812-252815 Bearing	4
20	10001491	Pothole hole pusher pin	2
21	10001493	Adjusting washer 2	2
22	10001494	Adjusting washer 3	2
23	10001490	Pothole hole pusher rod	2

### 104.1 Battery Pack Module



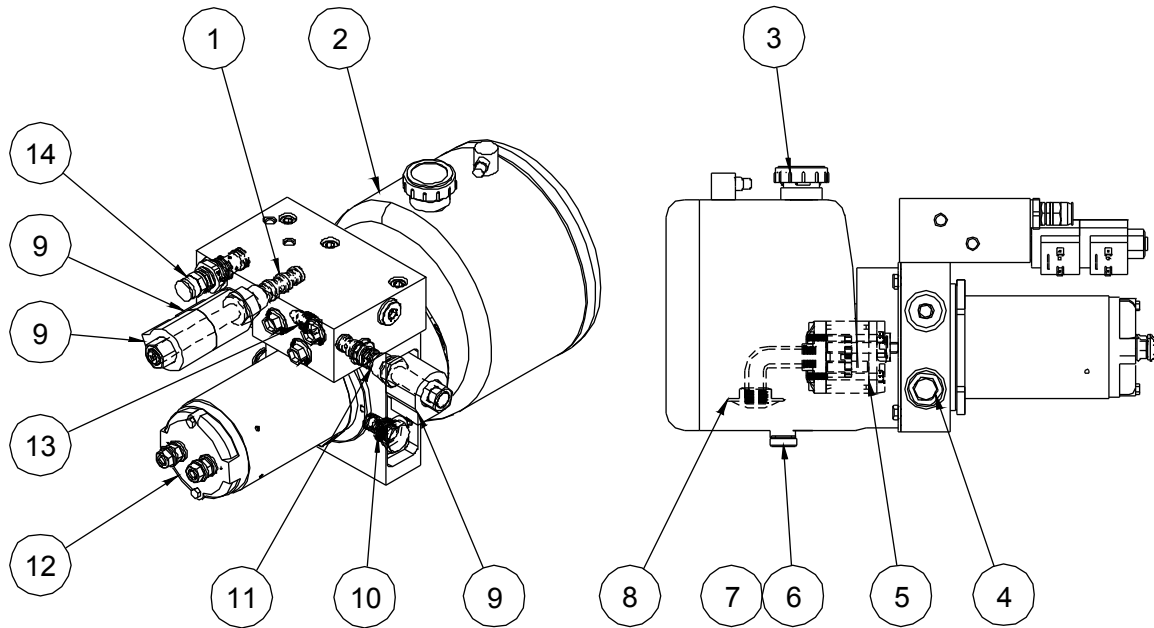
**104.1 Battery Pack Module**

Item	Part No.	Description	Qty.
1	00004261	Hydraulic power unit (refer to 105.1)	1
2	10000462	Nut	1
3	00002358	Straight fitting	1
4	00001833	Elbow	3
5	00001318	Straight fitting	2
6	00002392	Screw GB/T 70.1 M5×40	2
7	00000606	Washer GB/T 93 5	12
8	00000605	Washer GB/T 97.1 5	12
9	00002362B	Ground control assembly (refer to 107.1)	1
10	10001552	Sleeve pipe	2
11	00002350	Battery	2
12	10001576	Towline 35×60-14-02	1
13	00000828	Screw GB/T 70.3 M6×10	4
14	10005631	Towline bracket	1
15	00002865	Bolt QC/T 340 M6×14	2
16		Motor controller assembly (refer to 106.1)	1
17	00001246	Screw GB/T 70.1 M5×16	4
18	00002574	Nut GB/T 6183.1 M6	8
19	00001166	Screw GB/T 818 M6×20 - H	8
20	10001482	Latch	2
21	10002165	Battery tray weldment	1
22	00002319	Screw GB/T 818 M5×10 - H	2
23	00002564	Plug	1
24	00002414	Screw GB/T 818 M4×12 - H	2
25	10001541	Glide track	2
26	00000655	Power switch	1
27	00002380	Charger	1
28	00002391	Screw GB/T 818 M5×8 - H	4
29	00001250	Screw GB/T 818 M5×16 - H	8

**104.1 Battery Pack Module**

<b>Item</b>	<b>Part No.</b>	<b>Description</b>	<b>Qty.</b>
30	00002573	Nut GB/T 6183.1 M5	8
31	00000847	Screw GB/T 70.3 M10×30	2
32	10001521	Bracket	1
33	00000615	Washer GB/T 97.1 10	2
34	00000679	Washer GB/T 93 10	2
35	00001059	Screw GB/T 70.1 M10×30	2

**105.1 Hydraulic power unit**

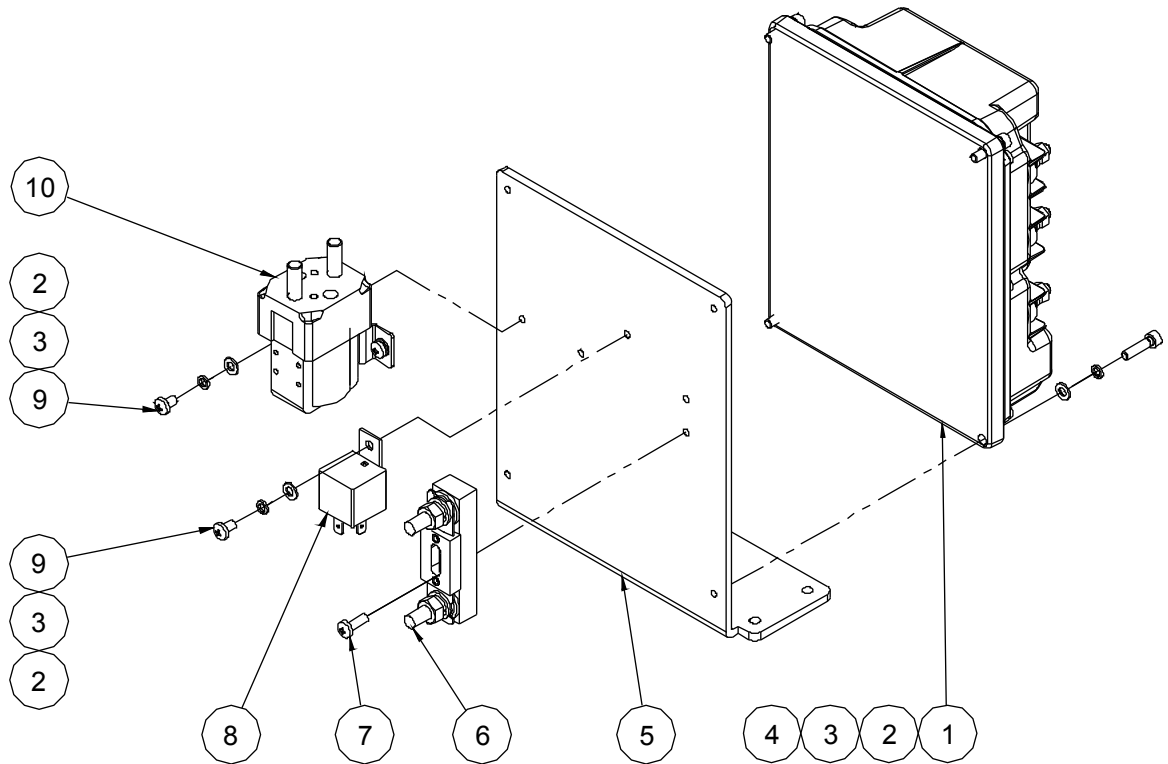


**105.1 Hydraulic power unit**

Item	Part No.	Description	Qty.
1	00003124	Solenoid valve spool	1
2	00002393	Tank	1
3	00003081	Tank cover	1
4	00003126	Relief valve	1
5	00004259	Pump	1
6	00003137	Plug M12×1.25	1
7	00001333	Washer JB/T 982 12	1
8	00003145	Filter web	1
9	00003131	Coil	3
10	00003282	Check valve	1
11	00003125	Solenoid valve spool	1
12	00004258	Motor	1
13	00003283	Pressure compensation valve	1
14	00004253	Relief valve	1



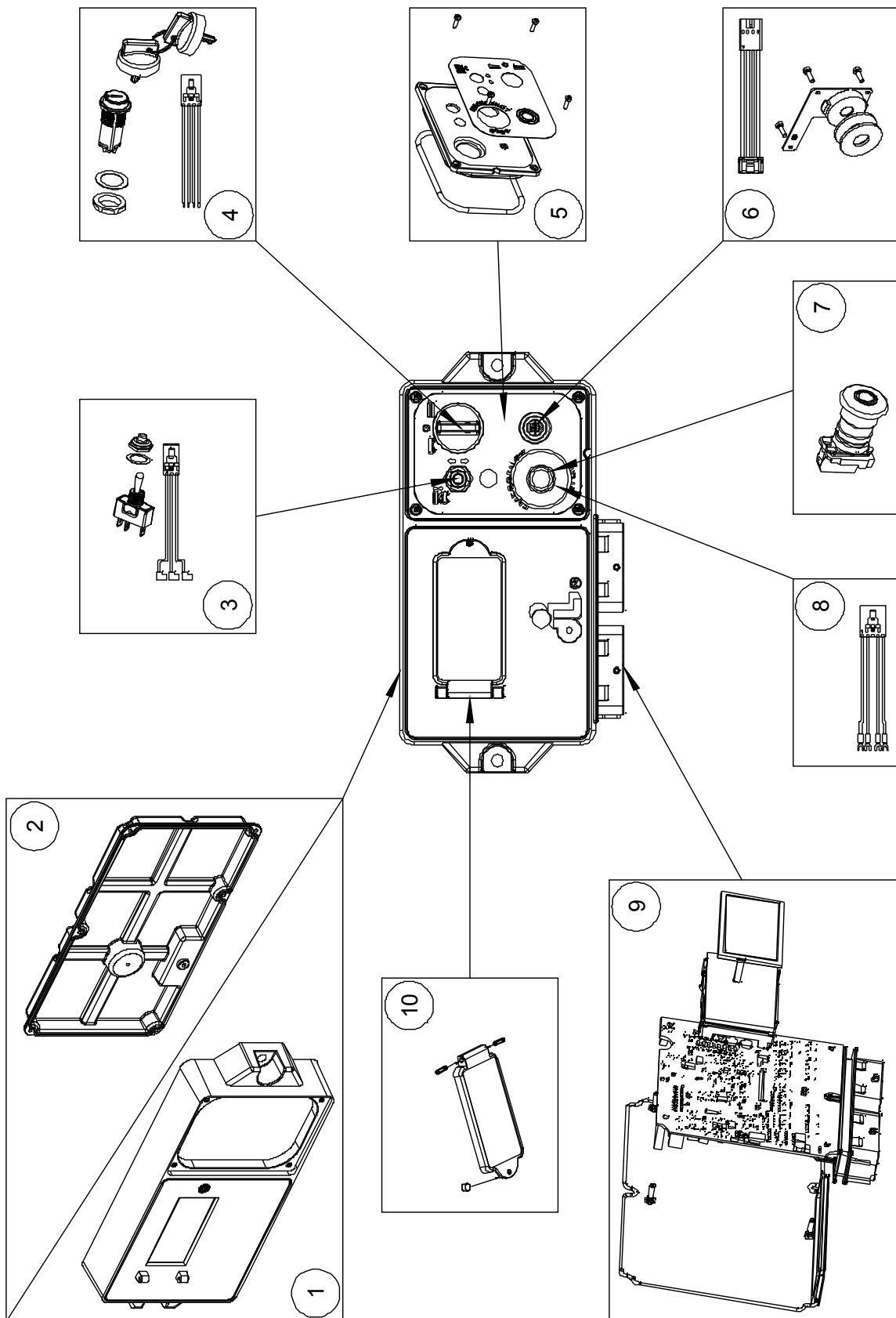
**106.1 Motor Controller Assembly**



**106.1 Motor Controller Assembly**

Item	Part No.	Description	Qty.
1	00002381	Motor controller	1
2	00000605	Washer GB/T 97.1 5	7
3	00000606	Washer GB/T 93 5	7
4	00000817	Screw GB/T 70.1 M5×20	4
5	10001531	Mounting plate	1
6	00002074	150A Fuse assembly	1
--	00002562	150A Fuse	1
--	00000757	Fuse seat	1
7	00002313	Screw GB/T 818 M5×14 - H	2
8	00002561	Relay	1
9	00002391	Screw GB/T 818 M5×8 - H	3
10	00002028	DC Contactor	1

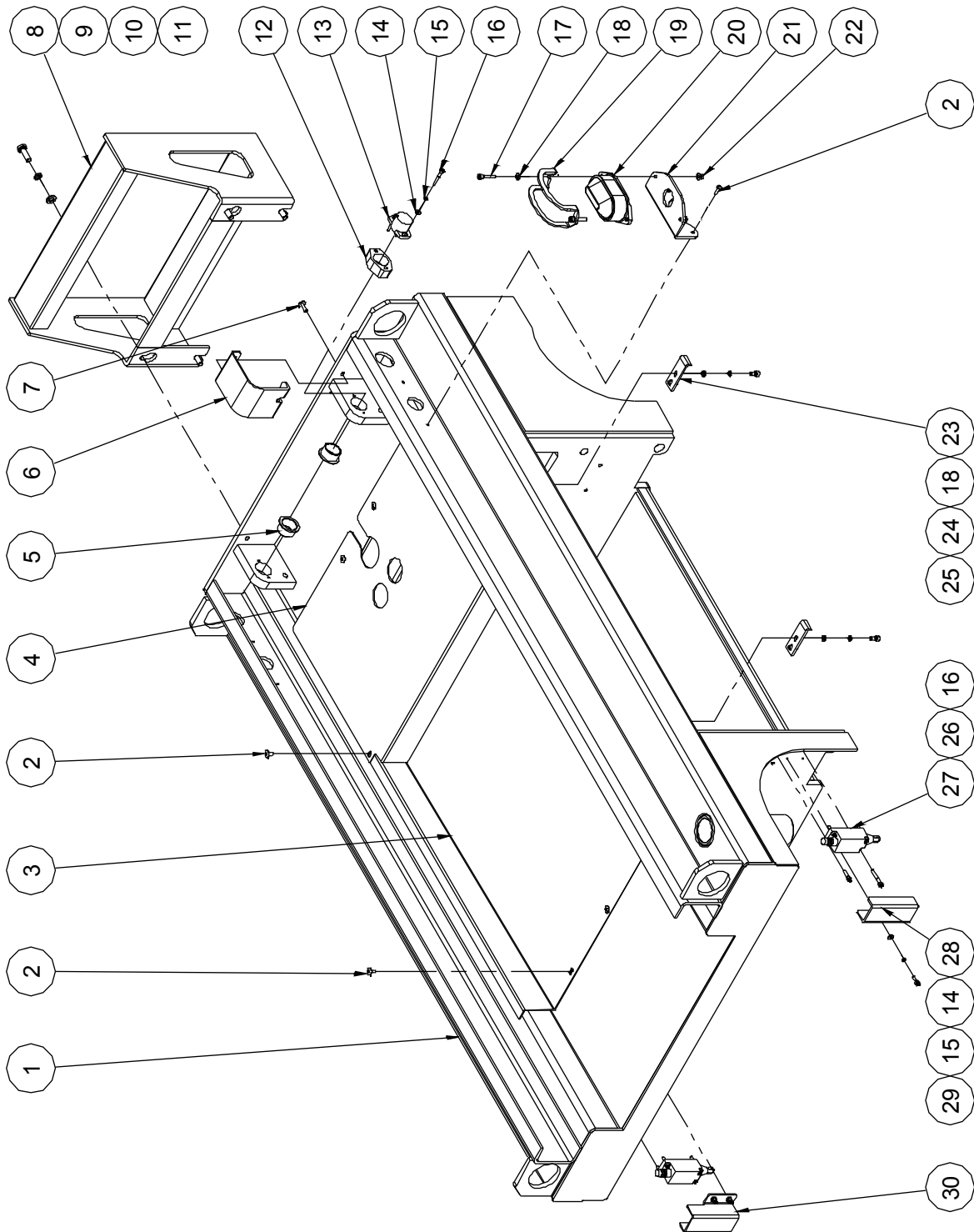
### 107.1 Ground Control Assembly



**107.1 Ground Control Assembly (with Indicator)**

Item	Part No.	Description	Qty.
1	00003159	Plastic body	1
2	00003160	Plastic bottom	1
3	00004235	Toggle switch kit	1
4	00004236	Key switch kit	1
--	00003172	Key	1
5	00004238	Electromechanical panel kit	1
6	00004239	Alarm kit	1
7	00003718	Emergency stop switch	1
--	00003719	Red mushroom head	1
--	00003720	Base with 1 NC contact	1
8	00004240	Emergency stop switch harness	1
9	00004234	PCB & Display kit	1
10	00002379	Screen protector kit	1

108.1 Ladder and Accessories



**108.1 Ladder and Accessories**

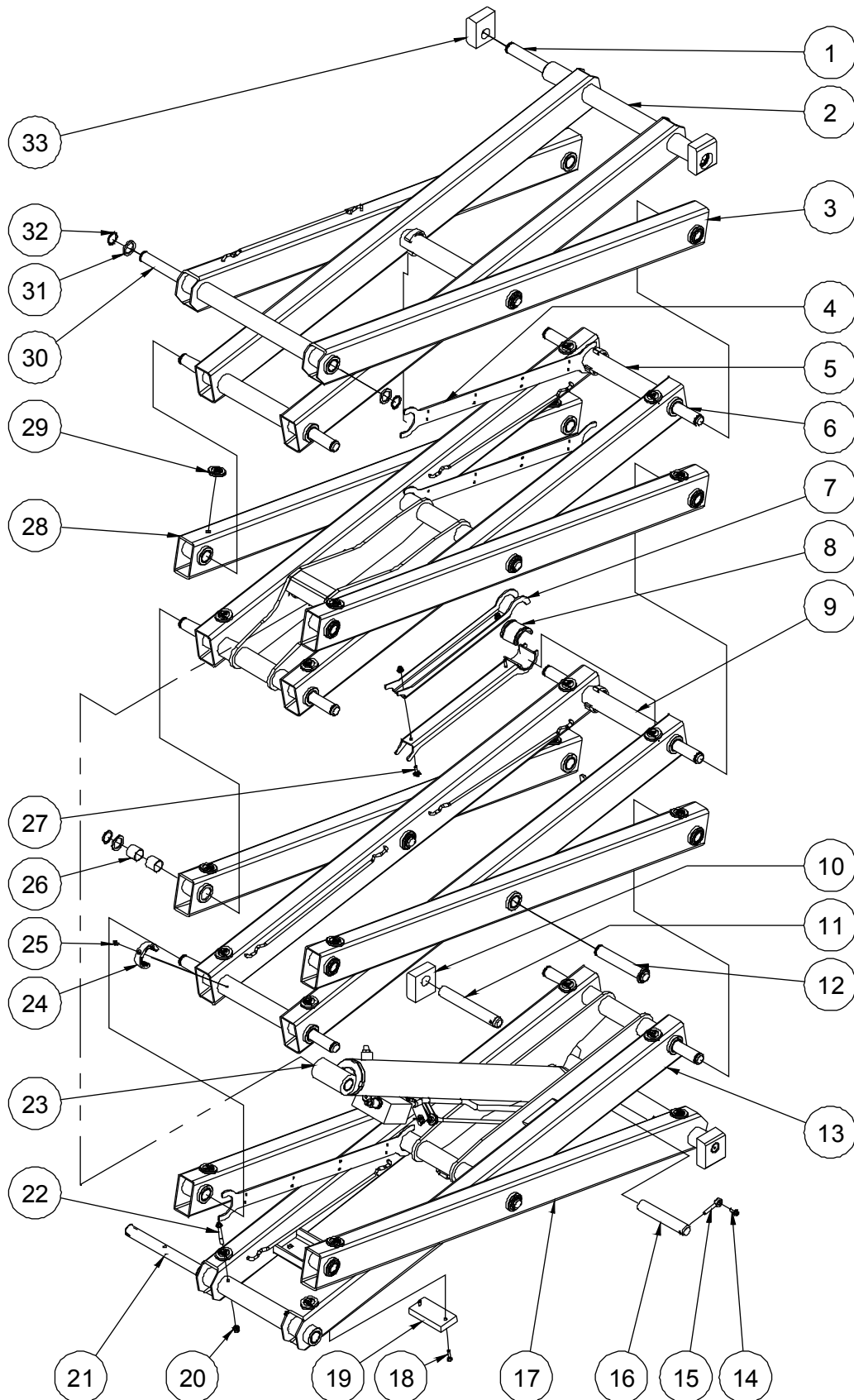
Item	Part No.	Description	Qty.
1	10000990	Frame weldment	1
2	00000999	Screw GB/T 973 M5×10	9
3	10001563	Cover	1
4	10001564	Cover	1
5	00000229	8822-25165 Bearing	2
6	10001570	Sensor cover	1
7	00002523	Screw GB/T 973 M5×16	2
8	10002168	Ladder	1
9	00000993	Bolt GB/T 5783 M8×25	4
10	00000609	Washer GB/T 93 8	4
11	00000608	Washer GB/T 97.1 8	4
12	10001569	Sensor bracket	1
13	00000644	Rotary sensor	1
14	00000778	Washer GB/T 97.1 4	6
15	00000779	Washer GB/T 93 4	6
16	00002415	Screw GB/T 70.1 M4×30	6
17	00002484	Screw GB/T 70.1 M5×25	2
18	00000605	Washer GB/T 97.1 5	6
19	10000488	Beacon cover	1
20	00000740	Beacon	1
21	10001565	Beacon bracket	1
22	00002573	Nut GB/T 6183.1 M5	2
23	10001571	Lock	2
24	00000606	Washer GB/T 93 5	4
25	00001030	Screw GB/T 70.1 M5×10	4
26	00000604	Screw GB/T 70.1 M4×16	4
27	00002419	Limit switch	2
28	10001567	Switch cover	1
29	00001054	Screw GB/T 70.1 M4×12	4

**108.1 Ladder and Accessories**

<b>Item</b>	<b>Part No.</b>	<b>Description</b>	<b>Qty.</b>
30	10001566	Switch cover	1

# **Section 2 Scissor**

201.1 Scissor Assembly





**201.1 Scissor Assembly**

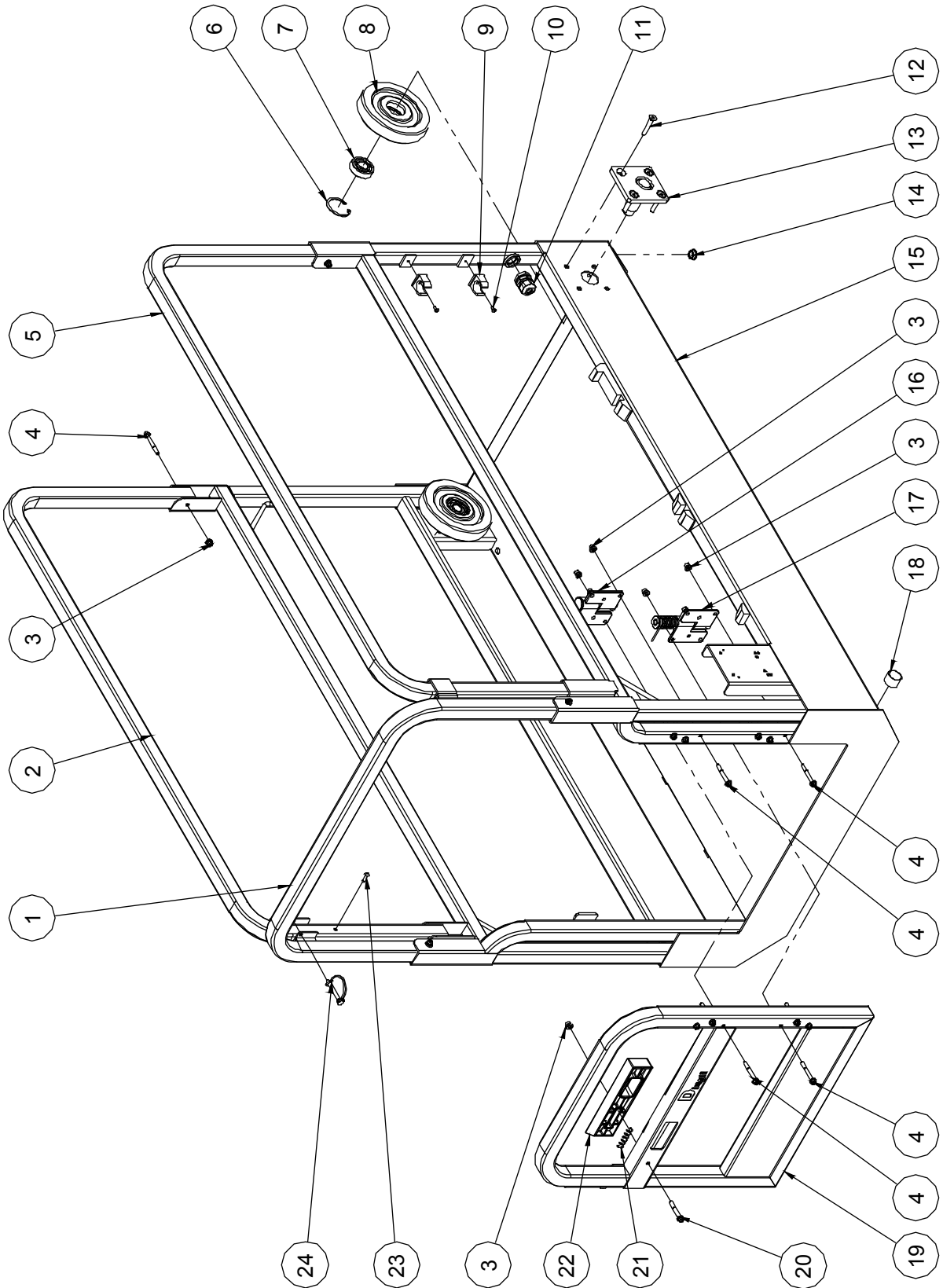
Item	Part No.	Description	Qty.
1	00000561	899-25502 Pin	1
2	10001430	Inner arm 4	1
3	10001419	Outer arm 3	1
4	10001406	Cable bridge	3
5	10001428	Inner arm 3	1
6	00000560	899-25468 Pin	9
7	10001402	Safety arm	2
8	10001403	Safety arm bushing	2
9	10001427	Inner arm 2	1
10	10001401	Chassis slider	2
11	00002334	896B-25×14 Pin	2
12	00000559	899-25136 Pin	2
13	10001422	Inner arm 1	1
14	00002864	Bolt QC/T 340 M6×16	2
15	00000217	8902-06045 Pin	2
16	00000584	895-25135 Pin	2
17	10001414	Outer arm 1	1
18	00000832	Screw GB/T 70.3 M6×25	2
19	10001400	Pothole pusher	1
20	00002574	Nut GB/T 6183.1 M6	6
21	10001405	Pin	1
22	00002569	Bolt GB/T 16674 M6×55	4
23		Lift cylinder assembly (without seal kit) (refer to 401.1)	1
24	10001421	Collar	4
25	00000821	Screw GB/T 70.3 M5×12	4
26	00000369	8812-252825 Bearing	68
27	00002866	Bolt QC/T 340 M6×20	2
28	10001432	Outer arm 2	4
29	10000264	Block	24

**201.1 Scissor Assembly**

<b>Item</b>	<b>Part No.</b>	<b>Description</b>	<b>Qty.</b>
30	00000562	899-25516 Pin	1
31	10001404	Washer	26
32	00000781	Circlips JB/ZQ 4342-25	26
33	10001420	Platform slider	2

# Section 3 Platform

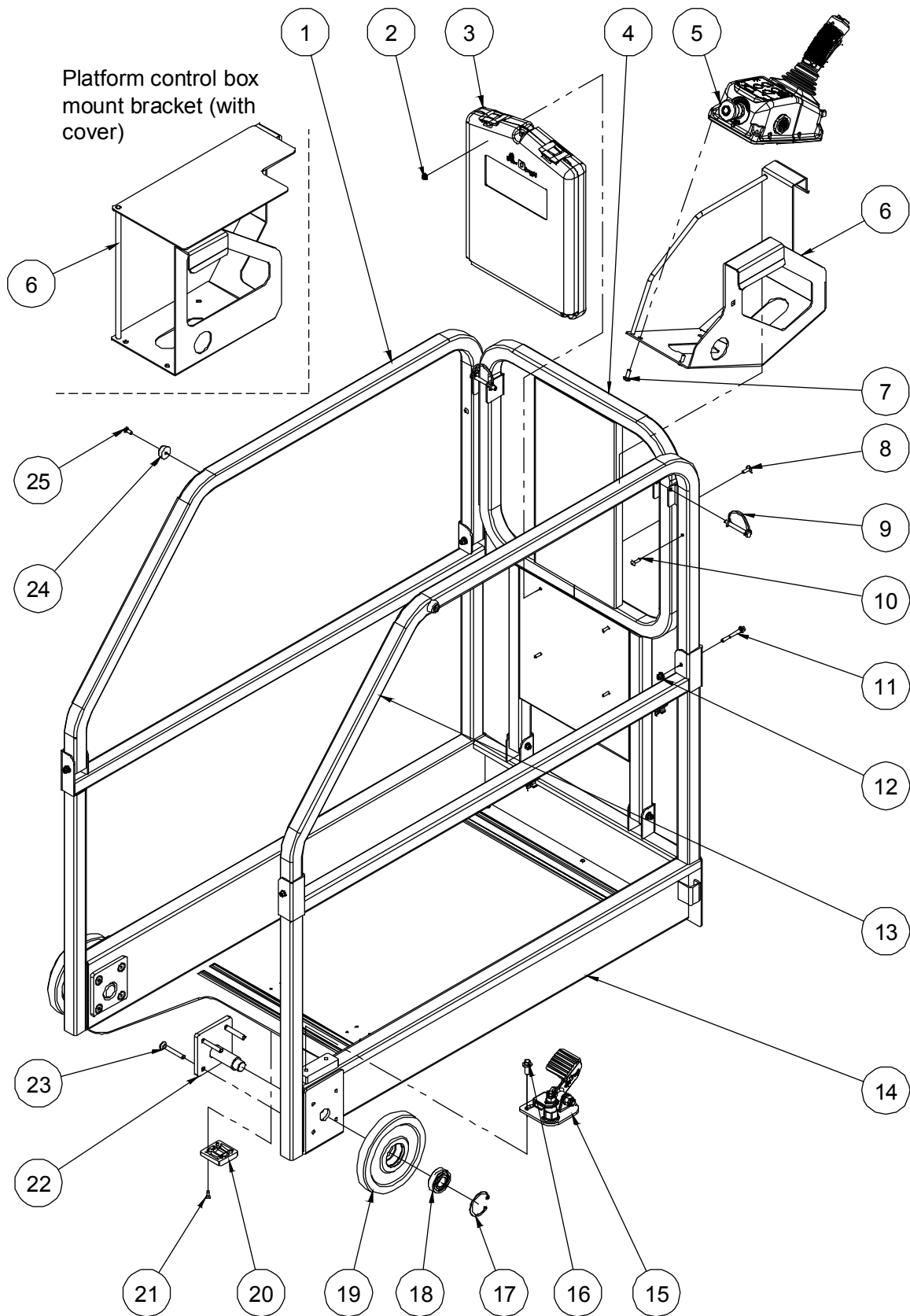
301.1 Main Platform Assembly



**301.1 Main Platform Assembly**

Item	Part No.	Description	Qty.
1	10001278	Rear rail	1
2	10001238	Upper main rail, left	1
3	00002574	Nut GB/T 6183.1 M6	19
4	00002581	Bolt GB/T 16674 M6×50	18
5	10001417	Upper main rail, right	1
6	00000887	Circlips GB/T 893.1-47	2
7	00001295	Bearing GB/T 276-1994 - 6204	2
8	10002031	Roller	2
9	00001823	Clip 24	2
10	00004385	Screw GB/T 823 M4×8	2
11	00002316	Water-proof joint M24	1
12	00001154	Screw GB/T 70.3 M8×45	8
13	10000307	Roller bracket	2
14	10001389	Sheath	1
15	10002009	Main deck weldment	1
16	10000299	Hinge A	1
17	10000302	Hinge B	1
18	00000368	8812-252820 Bearing	2
19	10001250	Entry gate	1
20	00002585	Bolt GB/T 16674 M6×45	1
21	10002379	Spring	1
22	10001255	Latch handle	1
23	00001991	Rivet GB/T 12618.4 4.8×16	2
24	10001178	Inserted pin	2

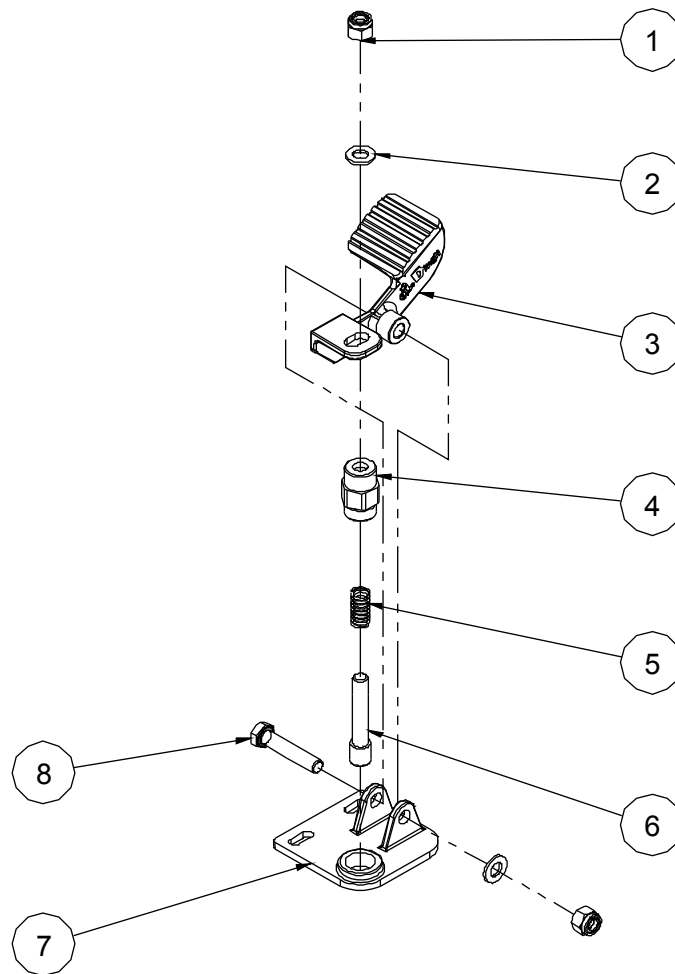
### 302.1 Platform Extension Assembly



**302.1 Platform Extension Assembly**

Item	Part No.	Description	Qty.
1	10001245	Upper extension rail, left	1
2	00002573	Nut GB/T 6183.1 M5	4
3	50000555	Manual box	1
4	10001266	Front rail	1
5	00002321B	Platform control box assembly (refer to 304.1)	1
6	10001251	Platform control box mount bracket	1
	10001949	Platform control box mount bracket (with cover)	1
7	00001986	Screw GB/T 818 M6×16 - H	4
8	00002523	Screw GB/T 973 M5×16	4
9	10001178	Inserted pin	2
10	00001991	Rivet GB/T 12618.4 4.8×16	2
11	00002581	Bolt GB/T 16674 M6×50	6
12	00002574	Nut GB/T 6183.1 M6	6
13	10001247	Upper extension rail, right	1
14	10002016	Extension deck weldment	1
15	10000333	Platform locking device assembly (refer to 303.1)	1
16	00002875	Bolt QC/T 340 M8×20	2
17	00000887	Circlips GB/T 893.1-47	2
18	00001295	Bearing GB/T 276-1994 - 6204	2
19	10002054	Roller	2
20	10000046	Slide pad	2
21	00002337	Screw GB/T 819 M5×12 - H	8
22	10000307	Roller bracket	2
23	00001155	Screw GB/T 70.3 M8×55	8
24	10000376	Bumper	2
25	00000607	Screw GB/T 818 M5×12 - H	2

### 303.1 Platform Locking Device Assembly

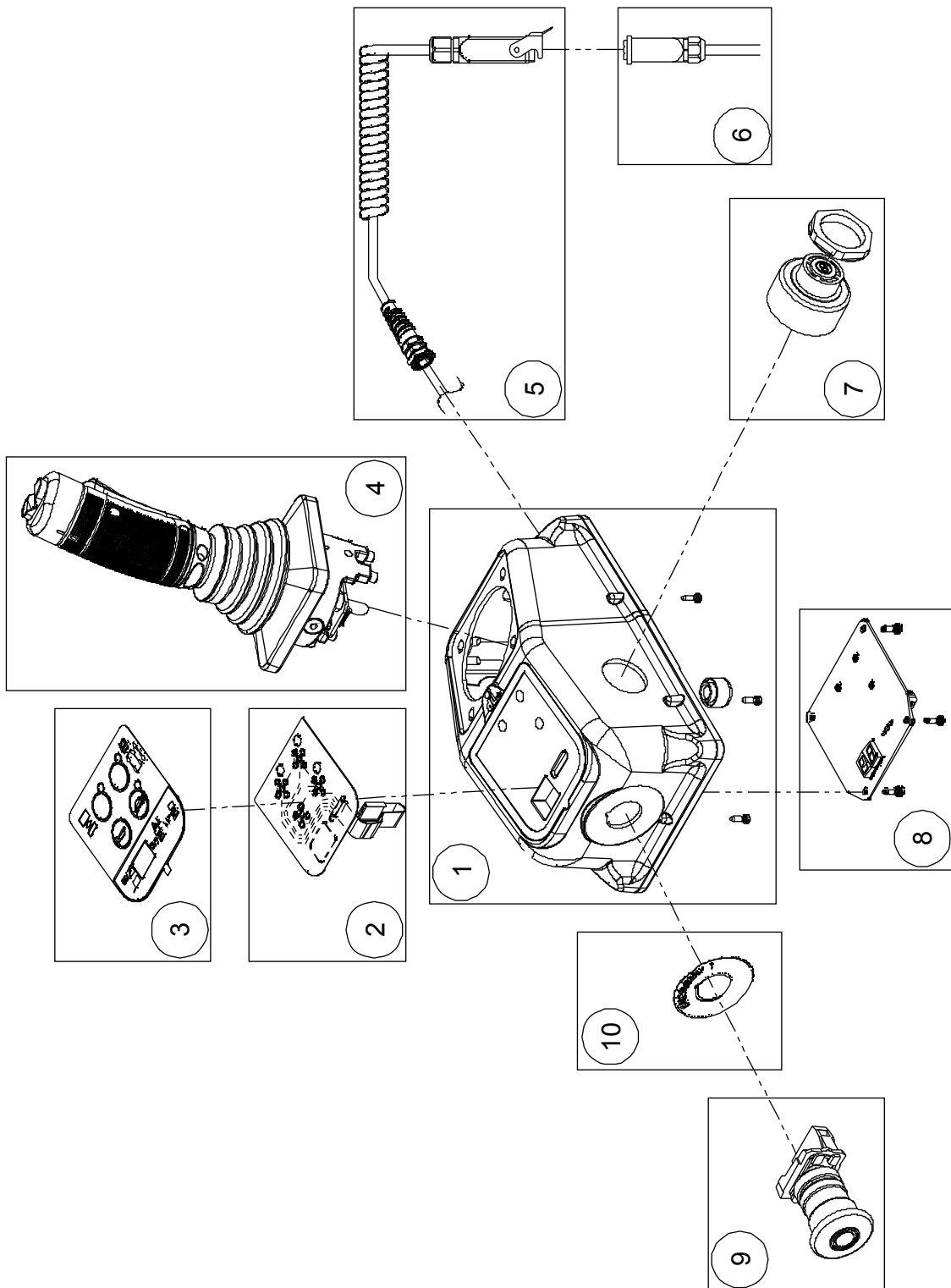


### 303.1 Platform Locking Device Assembly

Item	Part No.	Description	Qty.
1	00000623	Nut GB/T 6182 M10	2
2	00000615	Washer GB/T 97.1 10	2
3	10000334	Foot pedal	1
4	10000337	Lock pin housing	1
5	10000336	Spring	1
6	10000338	Lock pin	1
7	10000339	Bracket	1
8	00002030	Bolt GB/T 5782 M10×50	1



### 304.1 Platform Control Box Assembly

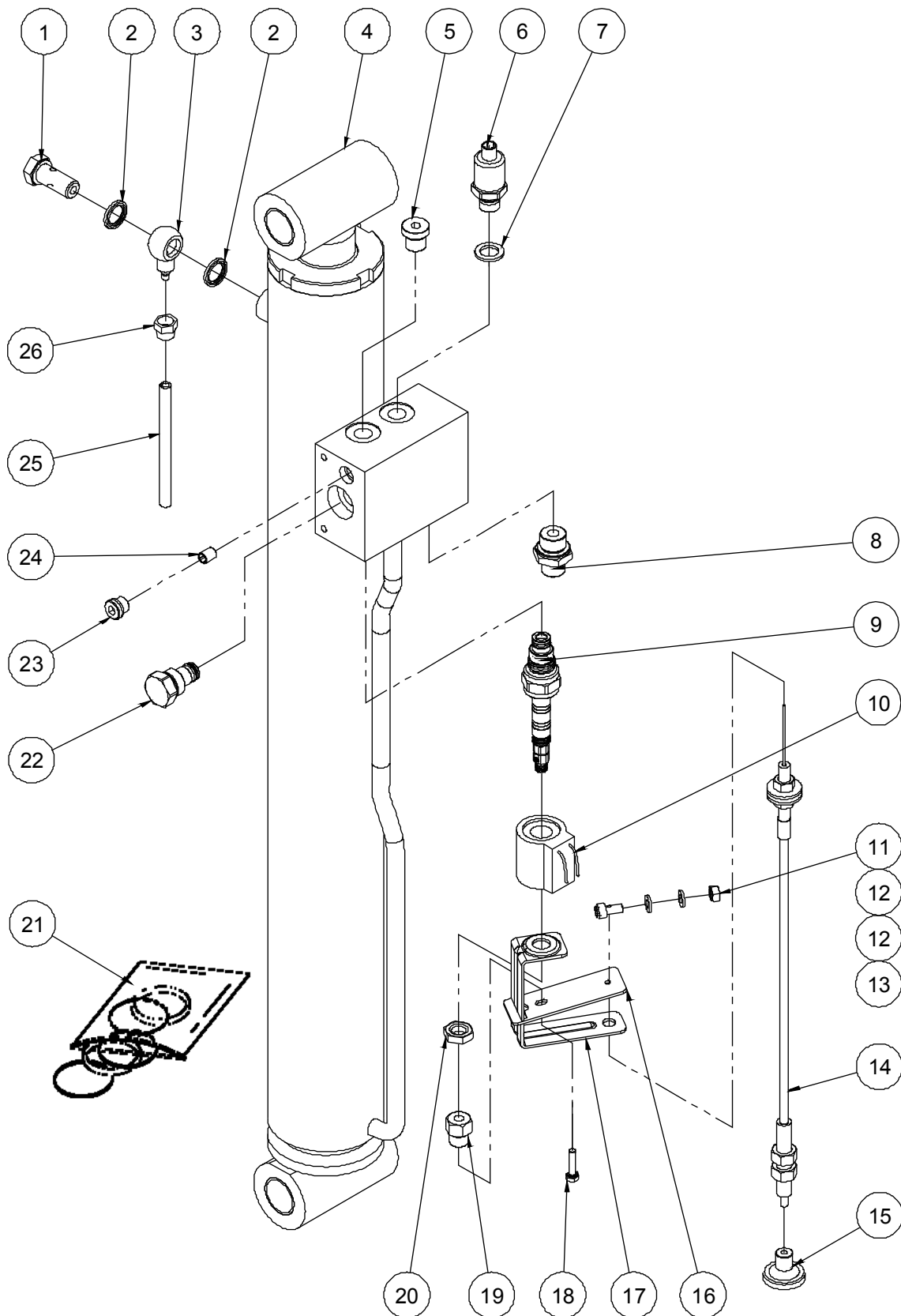


**304.1 Platform Control Box Assembly**

Item	Part No.	Description	Qty.
1	00004224	PCU housing	1
2	00004225	Keyboard	1
3	09140006	Decal, Platform control panel	1
4	00002324	Joystick	1
--	00004226	Switch boot	1
5	00002325	Coil cord	1
--	00003037	Housing	1
--	00003039	Male insert	1
--	00003041	Male contacts	5
--	00003043	Cable gland	1
6	00002697	Platform control box harness	1
--	00003042	Hood	1
--	00003040	Female insert	1
--	00003038	Female contacts	5
--	00003043	Cable gland	2
7	00002326	Alarm	1
8	00002322	Main board	1
9	00003718	Emergency stop switch	1
--	00003719	Red mushroom head	1
--	00003720	Base with 1 NC contact	1
10	00002328	Decal, Emergency stop panel	1

# **Section 4 Hydraulic System**

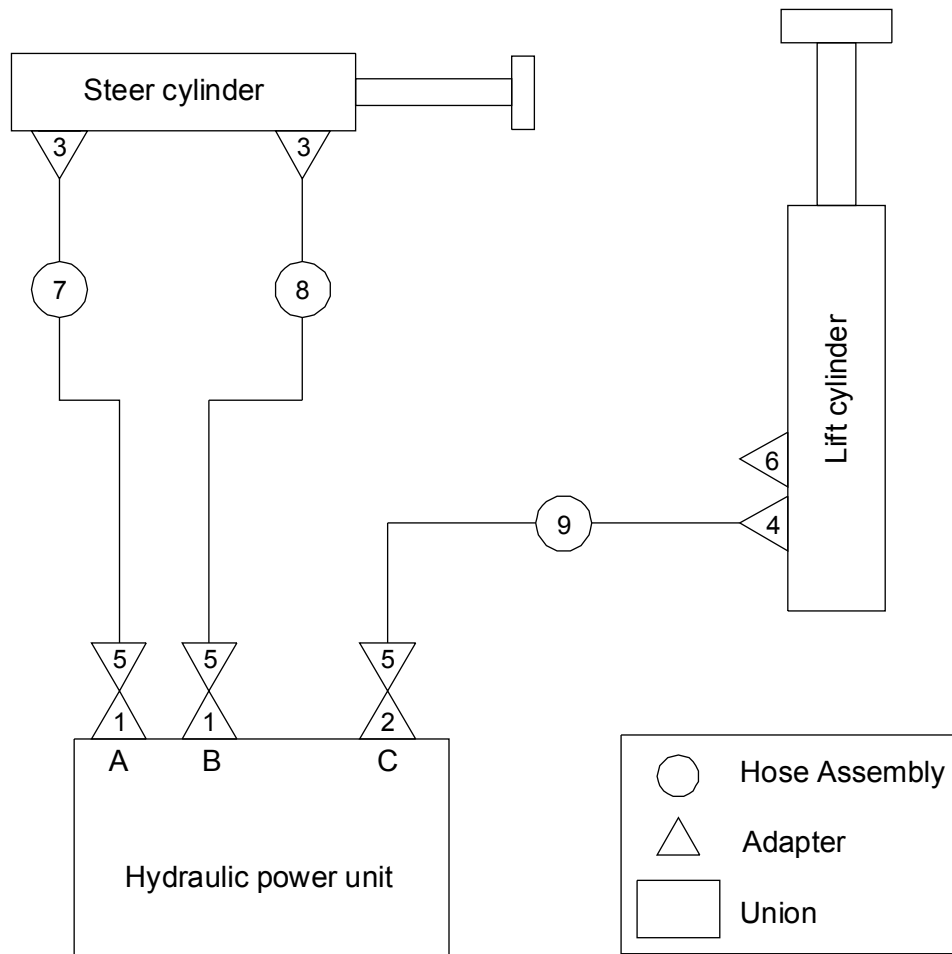
### 401.1 Lift Cylinder Assembly



**401.1 Lift Cylinder Assembly**

Item	Part No.	Description	Qty.
1	10000464	Fitting	1
2	00002519	Washer BS/A 13.74	2
3	10000465	Fitting	1
4	10001441	Lift cylinder	1
5	00001073	Plug VST114×1.5ED	1
6	00002418	Pressure sensor	1
7	00002518	Washer JB/T 982 13	1
8	00001292	Straight fitting	1
9	00003118	Solenoid valve spool	1
10	00003119	Coil	1
11	00002247	Nut GB/T 6170 M6	1
12	00000620	Washer GB/T 97.1 6	2
13	10001457	Screw	1
14	10002382	Emergency down cable assembly	1
15	10001458	Lowering knob	1
16	10001455	Plate	1
17	10001456	Support	1
18	00002268	Bolt GB/T 5783 M5×20	1
19	10001454	Cable connector	1
20	00003122	Nut GB/T 6172.1 M12	1
21	00003144	Seal kit	1
22	10000404	Check valve	1
23	00002998	Plug SAE4	1
24	00003027	Orifice $\Phi$ 1.5	1
25	10000801	Hose	1
26	10000462	Nut	1

**402.1 Hydraulic Hoses and Fittings**

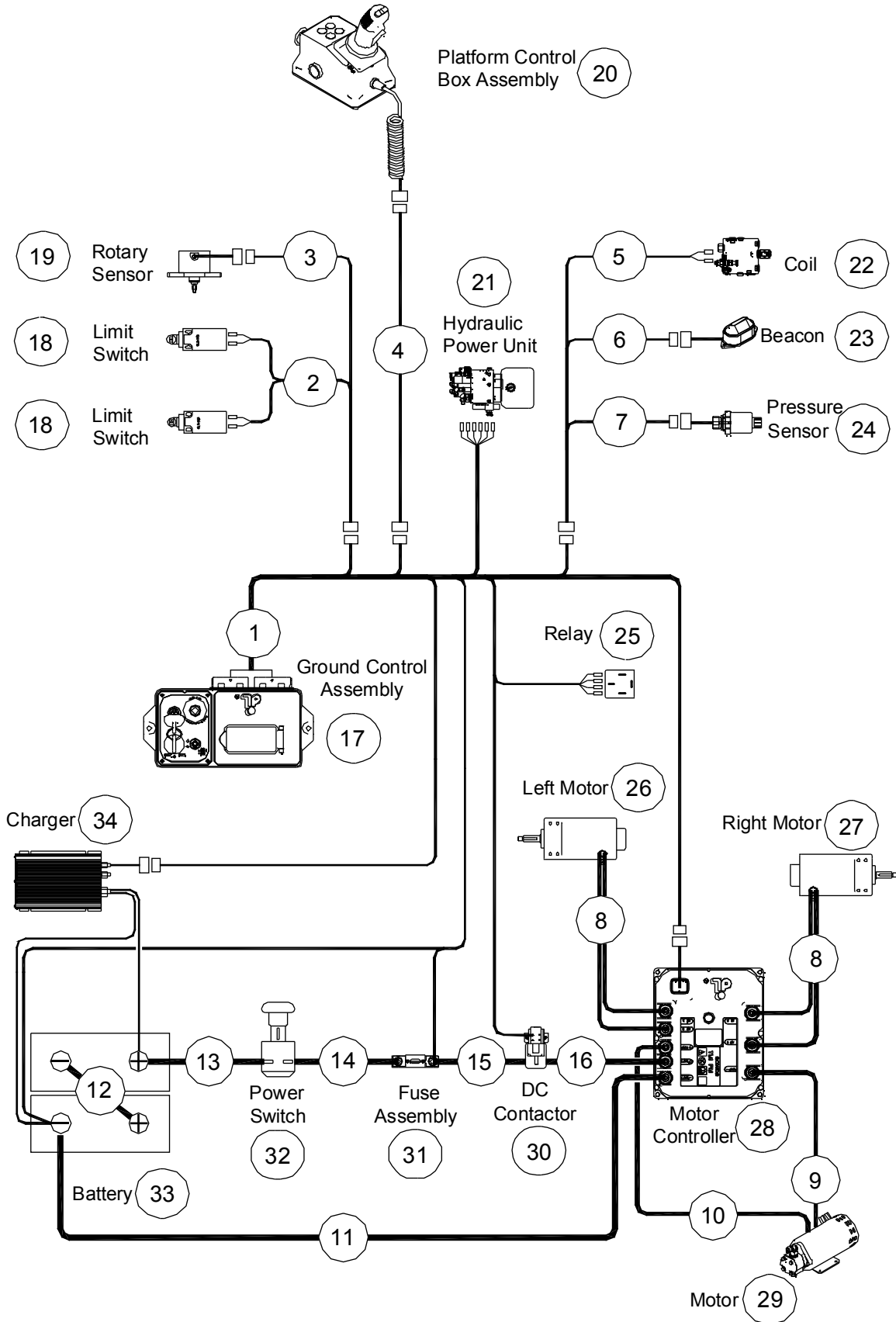


**402.1 Hydraulic Hoses and Fittings**

Item	Part No.	Description	Qty.
1	00001318	Straight fitting	2
2	00002358	Straight fitting	1
3	00001290	Straight fitting	2
4	00001292	Straight fitting	1
5	00001833	Elbow	3
6	00001073	Plug VST114×1.5ED	1
7	00002471	Hose assembly	1
8	00002472	Hose assembly	1
9	00002473	Hose assembly	1

# **Section 5 Electrical System**

501.1 Electrical Harness





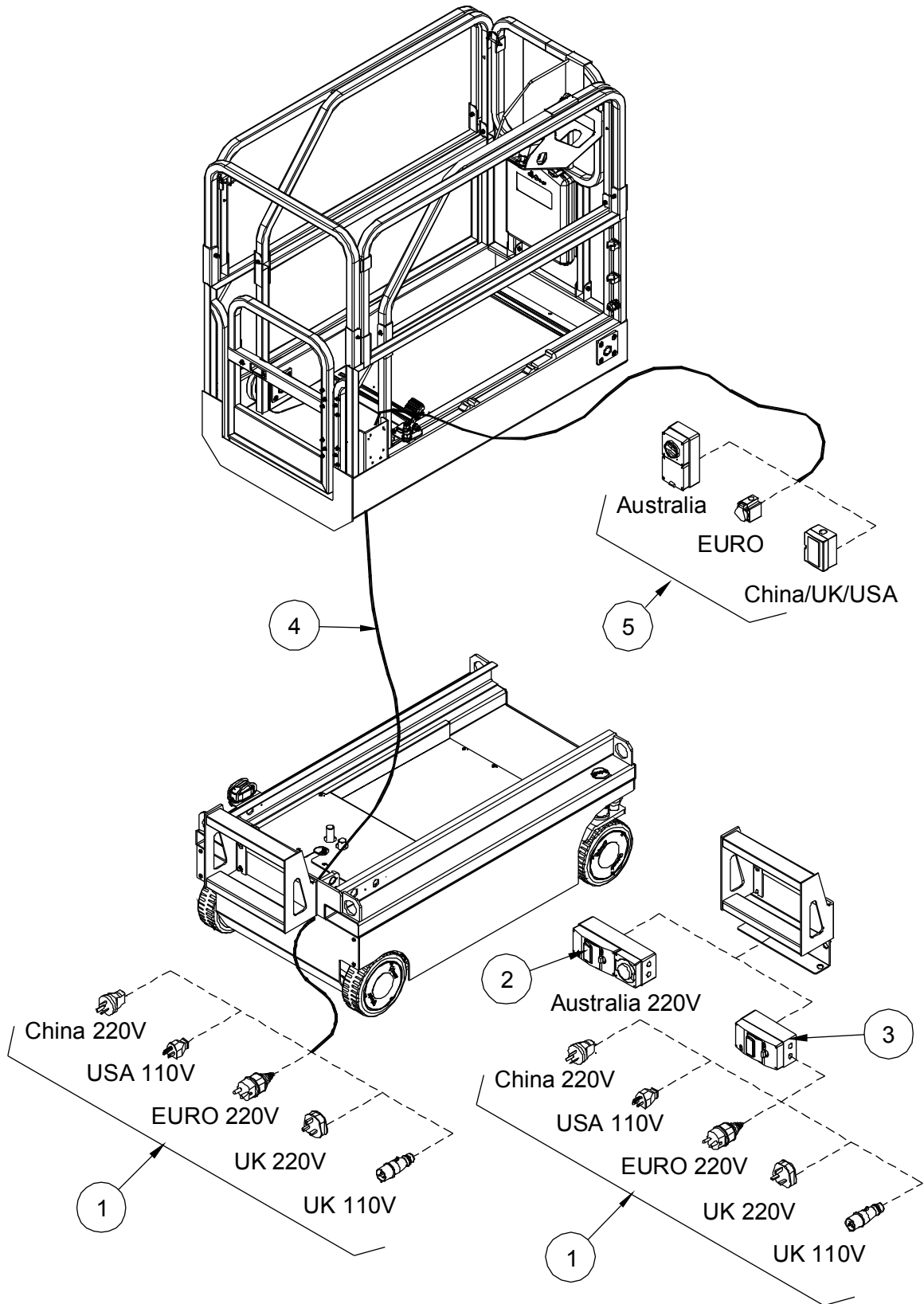
**501.1 Electrical Harness**

Item	Part No.	Description	Qty.
1	00002671	ECU harness	1
2	00002696	Pothole harness	1
3	00002708	Rotary sensor harness	1
4	00002697	Platform control box harness	1
5	00003158	Lowering valve harness	1
6	00002704	Beacon harness	1
7	00002964	Pressure sensor harness	1
8	00002687	Drive motor harness	2
9	00002684	Pump motor negative harness	1
10	00002680	Pump motor positive harness	1
11	00002659	Battery negative harness	1
12	00002660	Battery harness	1
13	00002667	Battery positive harness	1
14	00002707	Fuse harness	1
15	00002705	DC contactor harness	1
16	00002678	Motor controller harness	1
17		Ground control assembly (refer to 107.1)	1
18		Limit switch, pothole (refer to 108.1)	2
19		Rotary sensor (refer to 108.1)	1
20		Platform control box assembly (refer to 304.1)	1
21		Hydraulic power unit (refer to 105.1)	1
22		Coil (refer to 401.1)	1
23		Beacon (refer to 108.1)	1
24		Pressure sensor (refer to 401.1)	1
25		Relay (refer to 106.1)	1
26		Left motor (refer to 102.1)	1
27		Right motor (refer to 102.1)	1
28		Motor controller (refer to 106.1)	1
29		Motor (refer to 105.1)	1

**501.1 Electrical Harness**

<b>Item</b>	<b>Part No.</b>	<b>Description</b>	<b>Qty.</b>
30		DC Contactor (refer to 106.1)	1
31		150A Fuse assembly (refer to 106.1)	1
32		Power switch (refer to 104.1)	1
33		Battery (refer to 104.1)	2
34		Charger (refer to 104.1)	1

502.1 Power to Platform

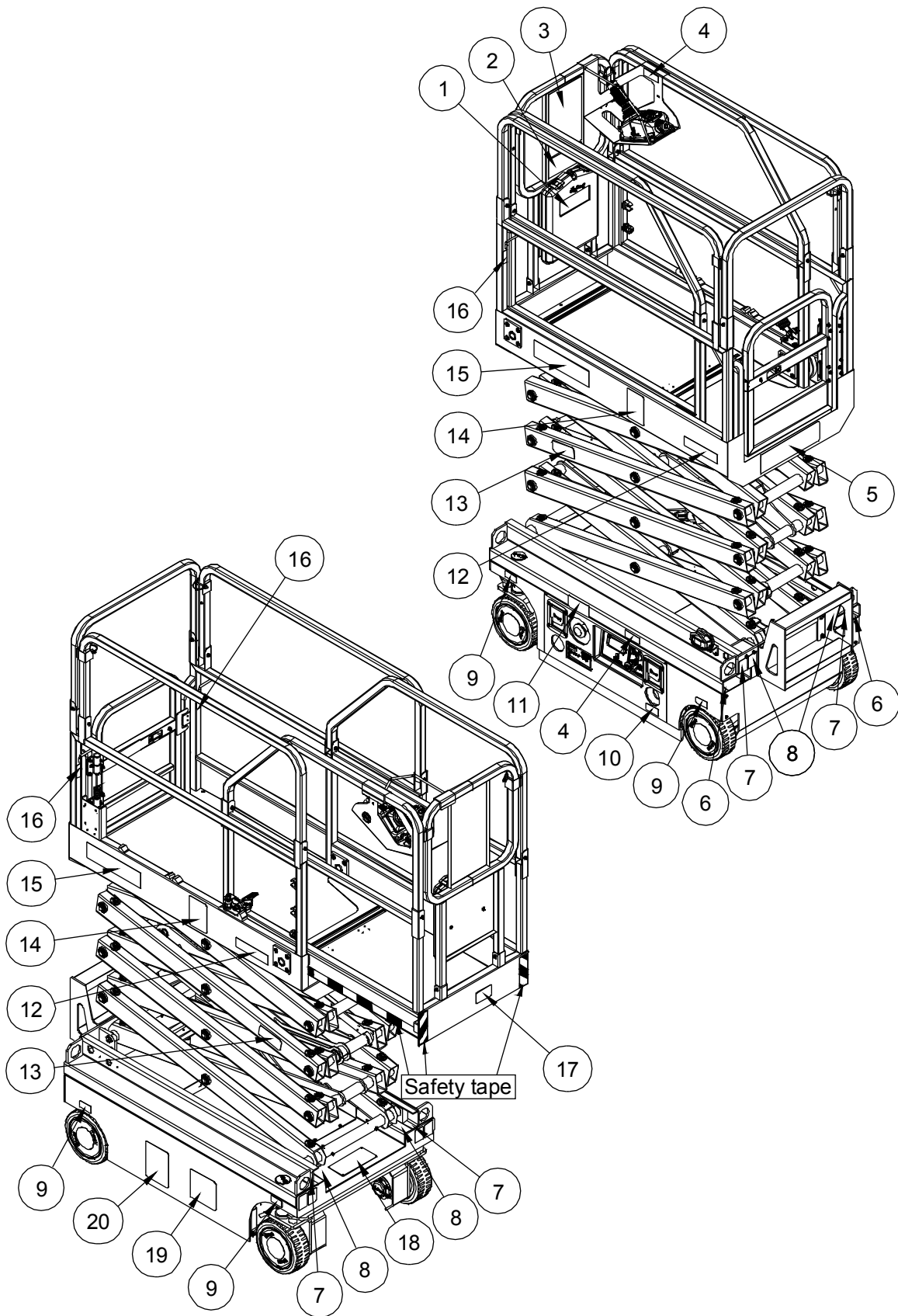


**502.1 Power to Platform**

Item	Part No.	Description	Qty.
1	00003148	AC plug (China 220V)	1
	00003149	AC plug (USA 110V)	1
	00003151	AC plug (European 220V)	1
	00003150	AC plug (UK 220V)	1
	00002615	AC plug (UK 110V)	1
2	00003147	AC plug (Australia 220V)	1
3	00002634	Circuit breaker (Option)	1
4	00003170	Wire cable, platform AC power	1
5	00002617	AC socket (Australia)	1
	00002709	AC socket (European)	1
	00000668	AC socket (China/UK/USA)	1

# Section 6 Decal

601.1 Decal




**601.1 Decal**


Item	Part No.	Description	Qty.
1	09340001	Decal, Notice-Keep the manual with the machine	1
2	09440003	Decal, Danger-Tip-over hazard, tilt-alarm	1
3	09440001	Decal, Danger-General safety rules	1
4	09340003	Decal, Instructions-Refer the operator to the instructions for use	2
5	09440039	Decal, Label-Capacity 240kg	1
6	09310001	Decal, Instructions-Forklift pockets	2
7	09310003	Decal, Instructions-Tie down point	4
8	09310002	Decal, Instructions-Lift point	4
9	09310028	Decal, Instructions-Maximum wheel load 450kg	4
10	09310004	Decal, Instructions-Emergency lower	1
11	09310034	Decal, Notice-Main power switch operation	1
12	09640042	Decal, Cosmetic-S036-RS	2
13	09330001	Decal, Instructions-Safety arm	2
14	09440009	Decal, Caution-Max. manual force 400N (Indoor) 200N (Outdoor)	2
15	09940003	Decal, Label-E-Tech	2
16	09440011	Decal, Label-Lanyard anchorage point	3
17	09540001	Decal, Label-CE	1
18	09210015	Nameplate, Manufacturer serial number	1
19	09410001	Decal, Danger-Explosion/burn hazard	1
20	09410003	Decal, Warning-Inspected and operation properly	1

601.1 Decal


① 09340001



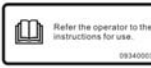
② 09440003




③ 09440001




④ 09340003




⑤ 09440039




⑥ 09310001




⑦ 09310003




⑧ 09310002



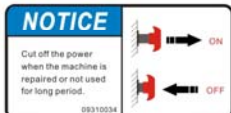
⑨ 09310028



⑩ 09310004



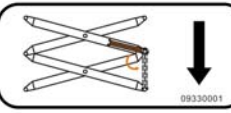
⑪ 09310034




⑫ 09640042

S036-RS

⑬ 09330001




⑭ 09440009




⑮ 09940003

E-Tech


⑯ 09410001



⑰ 09540001



⑱ 09410003



⑳ 09210015

