

# SELF-PROPELLED SCISSOR LIFTS

## PARTS MANUAL

(S06-EH / S06-E)

(Series 3)



### WARNING

THE MANUFACTURER SHALL NOT BE HELD LIABLE IN CASE OF FAULTS OR ACCIDENTS DUE TO NEGLIGENCE, INCAPACITY, INSTALLATION BY UNQUALIFIED TECHNICIANS AND IMPROPER USE OF THE MACHINE

DO NOT OPERATE THIS MACHINE UNTIL YOU READ AND UNDERSTAND ALL THE DANGERS, WARNINGS AND CAUTIONS IN THIS MANUAL

Part Number: SM0117229A\_Rev1.0

Zhejiang Dingli Machinery Co., Ltd.

First Edition, August 2018 Printing



## Table of Contents

### Section 1 Chassis

101.1	Steer Linkage and Wheels Assembly (S06-EH).....	2
102.1	Steer Linkage and Wheels Assembly (S06-E).....	5
103.1	Pothole Protection Assembly.....	8
104.1	Battery Pack Module.....	11
105.1	Power Unit Module (S06-EH).....	13
106.1	Power Unit Module (S06-E).....	16
107.1	Hydraulic Tank Assembly.....	19
108.1	Motor Controller Assembly (S06-E).....	21
109.1	Rear Wheel and Ladder (S06-EH).....	23
110.1	Rear Wheel and Ladder (S06-E).....	25
111.1	Charger Assembly.....	27
112.1	Ground Control and Limit Switch.....	28
113.1	Ground Control Assembly (S06-EH).....	30
114.1	Ground Control Assembly (S06-E).....	31

### Section 2 Scissor

201.1	Scissor Assembly.....	33
-------	-----------------------	----

### Section 3 Platform

301.1	Main Platform Assembly.....	37
302.1	Platform Extension Assembly.....	39
303.1	Platform Locking Device Assembly.....	41
304.1	Platform Control Box Assembly.....	43
305.1	Protective Device Assembly (Option).....	45

### Section 4 Hydraulic System

401.1	Lift Cylinder Assembly.....	48
402.1	Function manifold (S06-EH).....	50
403.1	Function manifold (S06-E).....	52
404.1	Hydraulic Hoses and Fittings (S06-EH).....	54
405.1	Hydraulic Hoses and Fittings (S06-E).....	56

### Section 5 Electrical System

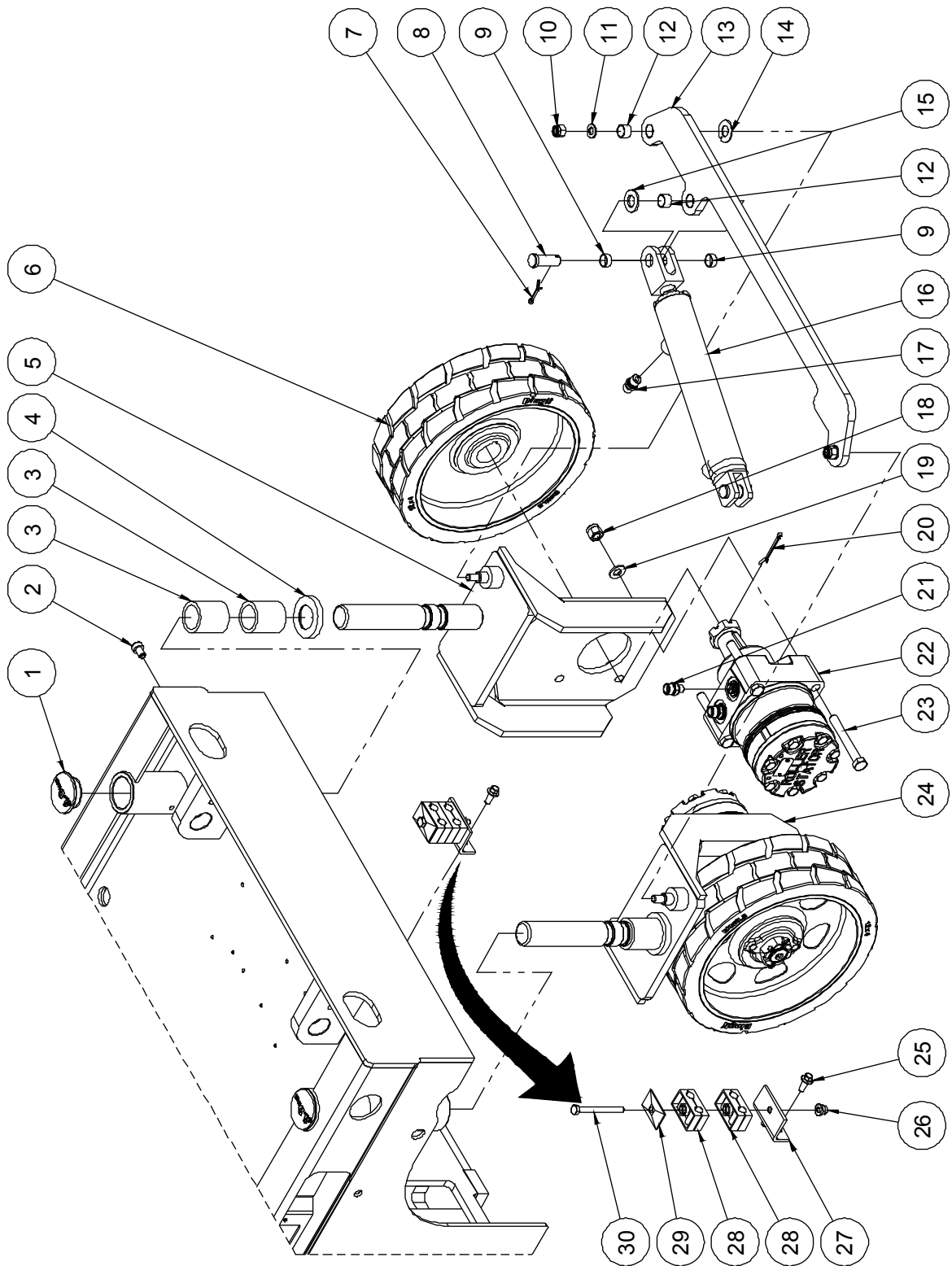
501.1	Electrical Harness (S06-EH).....	59
502.1	Electrical Harness (S06-E).....	62
503.1	Power to Platform.....	65

**Section 6 Decal**

601.1 Decal ..... 68

# Section 1 Chassis

### 101.1 Steer Linkage and Wheels Assembly (S06-EH)



**101.1 Steer Linkage and Wheels Assembly (S06-EH)**

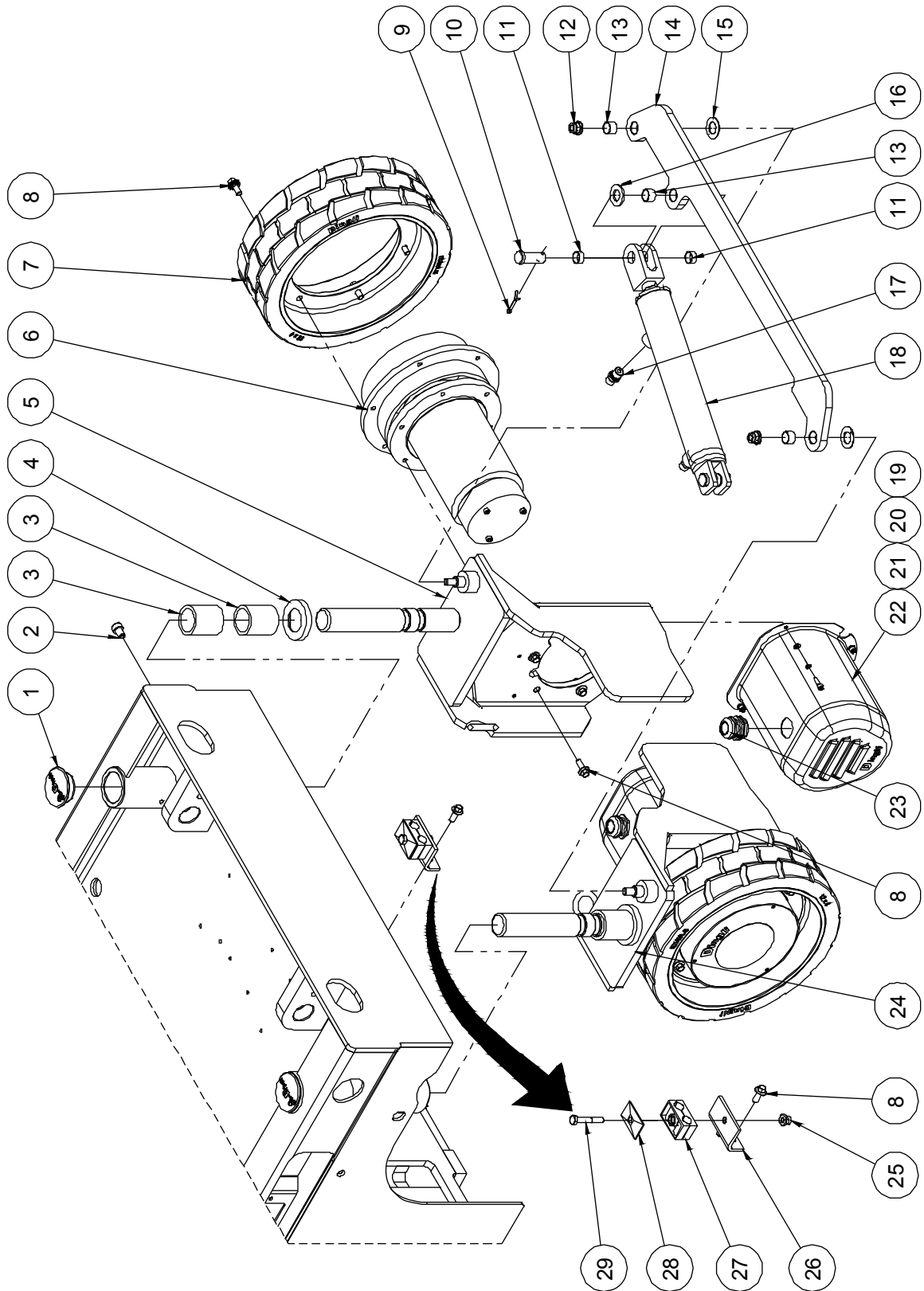
Item	Part No.	Description	Qty.
1	10001075	Cover	2
2	10001073	Screw	2
3	00000417	8813-354550 Bearing	4
4	10001072	Washer	2
5	10001077	Steer yoke weldment	1
6	10001076	Wheel	2
7	00002466	Cotter pin GB/T 91 4×28	2
8	00000686	891-1634.5 Pin	2
9	00000350	8812-161808 Bearing	4
10	00000623	Nut GB/T 6182 M10	2
11	00000615	Washer GB/T 97.1 10	2
12	00000351	8812-161812 Bearing	4
13	10001071	Tie rod	1
14	00000387	8832-18 Bearing	2
15	10001074	Washer	2
16	10000100	Steer cylinder assembly (without seal kit)	1
--	00003068	Seal kit	1
17	00001282	Straight fitting	2
18	00001249	Nut GB/T 6182 M12	8
19	00000814	Washer GB/T 97.1 12	8
20	00000634	Cotter pin GB/T 91 4×50	2
21	00002072	Straight fitting	4
22	00002083	Hydraulic motor	2
23	00001300	Bolt GB/T 5782 M12×90	8
24	10001082	Steer yoke weldment	1
25	00002875	Bolt QC/T 340 M8×20	2
26	00002575	Nut GB/T 6183.1 M8	1
27	10000458	Hose clamp support	1
28	00000538	Hose clamp	2

**101.1 Steer Linkage and Wheels Assembly (S06-EH)**

<b>Item</b>	<b>Part No.</b>	<b>Description</b>	<b>Qty.</b>
29	10000047	Base plate	1
30	00001026	Bolt GB/T 5782 M8×80	1



102.1 Steer Linkage and Wheels Assembly (S06-E)



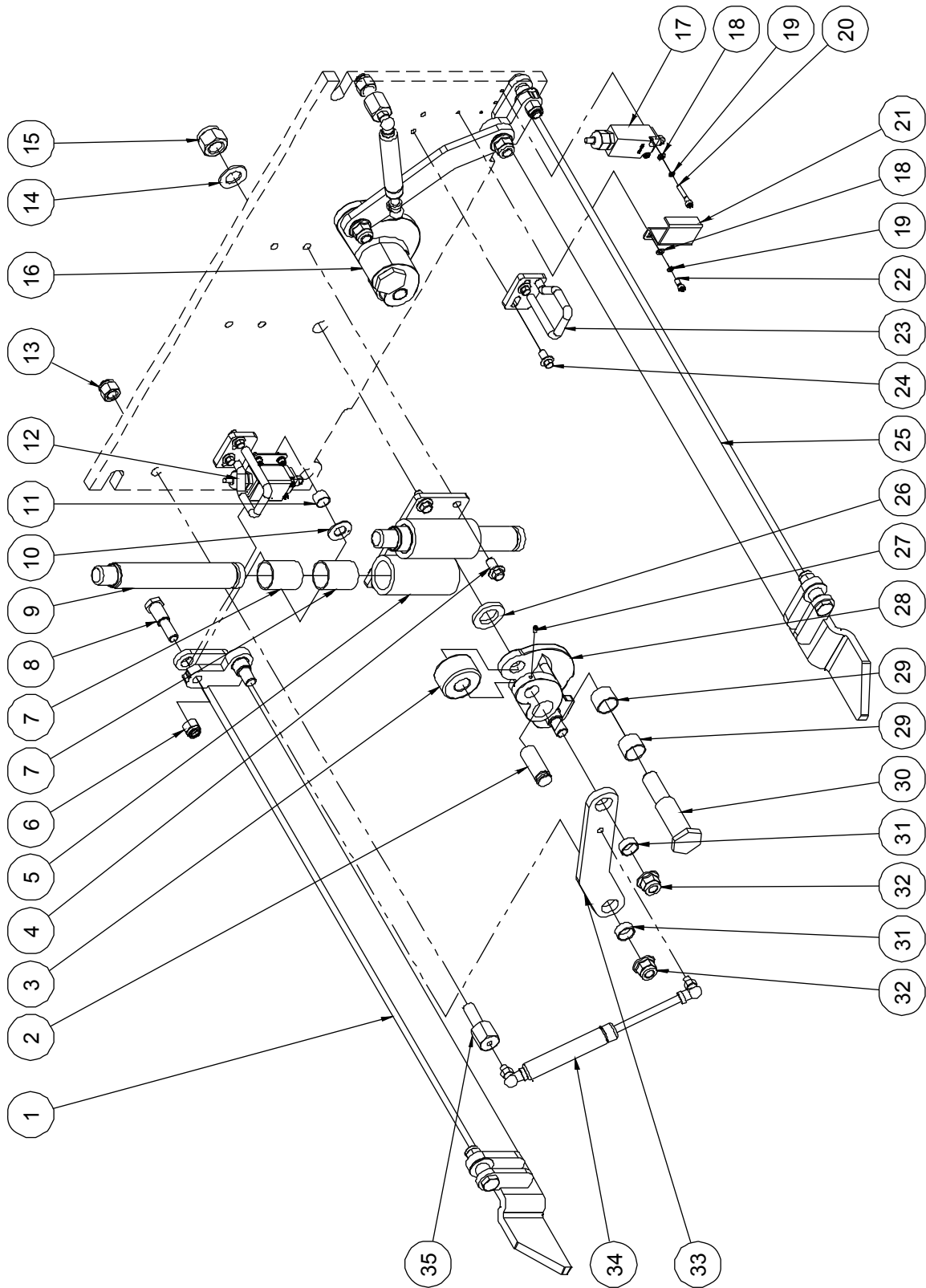
**102.1 Steer Linkage and Wheels Assembly (S06-E)**

Item	Part No.	Description	Qty.
1	10001075	Cover	2
2	10001073	Screw	2
3	00000417	8813-354550 Bearing	4
4	10001072	Washer	2
5	10001885	Steer yoke weldment	1
6	00002525	Drive motor assembly	2
--	00002524	Reducer	1
--	00002521	Motor	1
--	00002522	Brake	1
7	10001097	Wheel	2
8	00002875	Bolt QC/T 340 M8×20	26
9	00002466	Cotter pin GB/T 91 4×28	2
10	00000686	891-1634.5 Pin	2
11	00000350	8812-161808 Bearing	4
12	00002572	Nut GB/T 6183.1 M10	2
13	00000351	8812-161812 Bearing	4
14	10001071	Tie rod	1
15	00000387	8832-18 Bearing	2
16	10001074	Washer	2
17	00001282	Straight fitting	2
18	10000100	Steer cylinder assembly (without seal kit)	1
--	00003068	Seal kit	1
19	00001246	Screw GB/T 70.1 M5×16	8
20	00000606	Washer GB/T 93 5	8
21	00000605	Washer GB/T 97.1 5	8
22	10001096	Motor cover	2
23	00001829	Water-proof joint M30	2
24	10001888	Steer yoke weldment	1
25	00002575	Nut GB/T 6183.1 M8	1

**102.1 Steer Linkage and Wheels Assembly (S06-E)**

<b>Item</b>	<b>Part No.</b>	<b>Description</b>	<b>Qty.</b>
26	10000458	Hose clamp support	1
27	00000539	Hose clamp	1
28	10000047	Base plate	1
29	00002089	Bolt GB/T 5782 M8×50	1

### 103.1 Pothole Protection Assembly



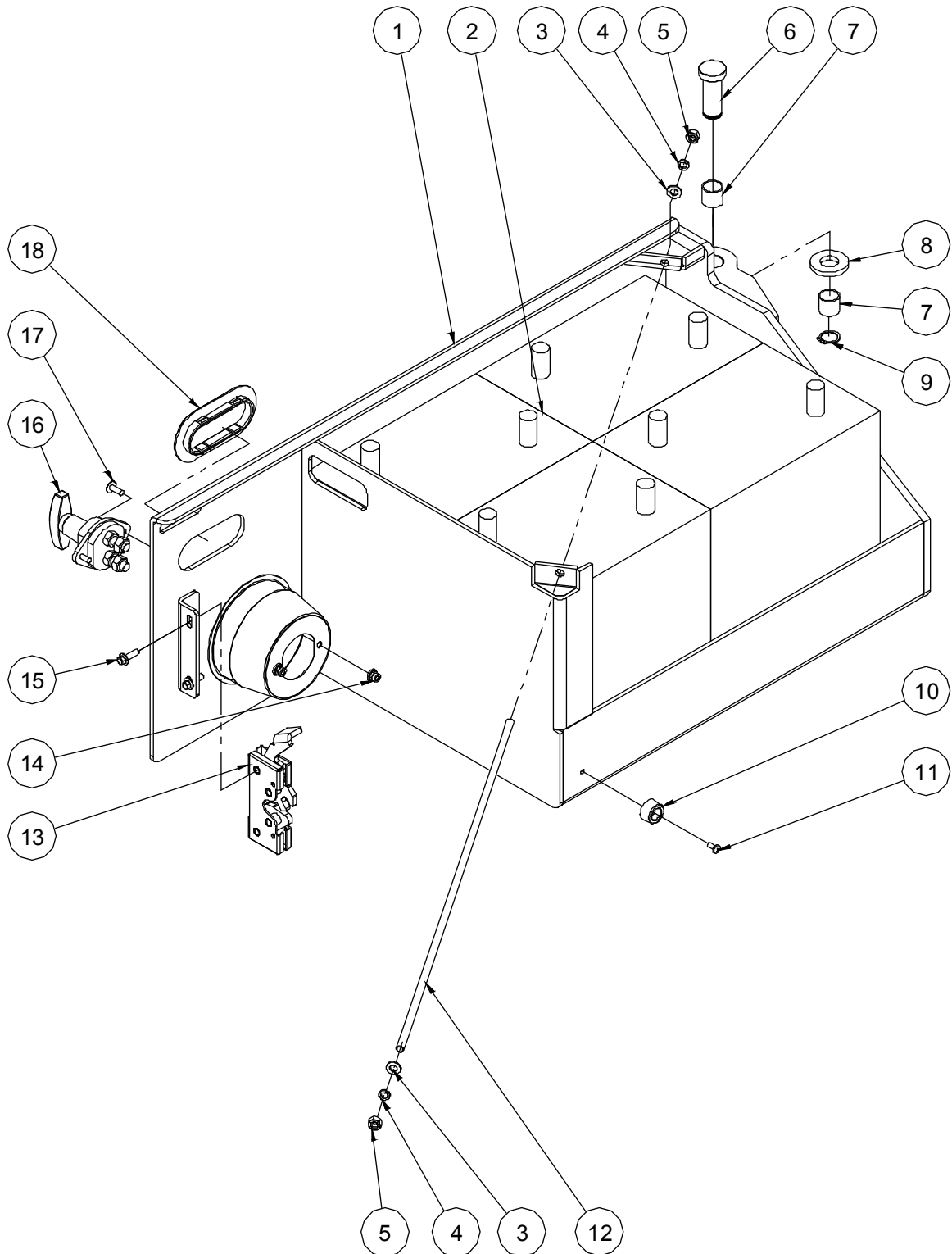
**103.1 Pothole Protection Assembly**

Item	Part No.	Description	Qty.
1	10001877	Pothole guard weldment	1
2	10000572	Pin	2
3	10000571	Roller	2
4	00002873	Bolt QC/T 340 M10×20	4
5	10000673	Pothole guide	1
6	00001249	Nut GB/T 6182 M12	4
7	00000390	8812-323645 Bearing	4
8	10001062	Pin	4
9	10001881	Pothole hole pusher assembly	2
10	00000381	8832-16 Bearing	4
11	00000351	8812-161812 Bearing	4
12	10001066	Lock clasp	1
13	00001044	Nut GB/T 6182 M14	2
14	00001050	Washer GB/T 97.1 20	2
15	00001051	Nut GB/T 6182 M20	2
16	10000584	Linkage weldment	1
17	00000739	Limit switch	2
18	00000605	Washer GB/T 97.1 5	8
19	00000606	Washer GB/T 93 5	8
20	00001253	Screw GB/T 70.1 M5×30	4
21	10000042	Switch cover	2
22	00001252	Screw GB/T 70.1 M5×12	4
23	10001065	Lock clasp	1
24	00002872	Bolt QC/T 340 M8×16	4
25	10001879	Pothole guard weldment	1
26	10000573	Washer	2
27	00001039	Screw GB/T 78 M5×10	2
28	10000585	Linkage weldment	1
29	00000368	8812-252820 Bearing	4

**103.1 Pothole Protection Assembly**

<b>Item</b>	<b>Part No.</b>	<b>Description</b>	<b>Qty.</b>
30	10000574	Pin	2
31	00000356	8812-202309 Bearing	4
32	00002577	Nut GB/T 6183.1 M14	4
33	10001061	Pothole link plate	2
34	10000038	Gas shock	2
35	10000569	Gas shock strut	2

104.1 Battery Pack Module

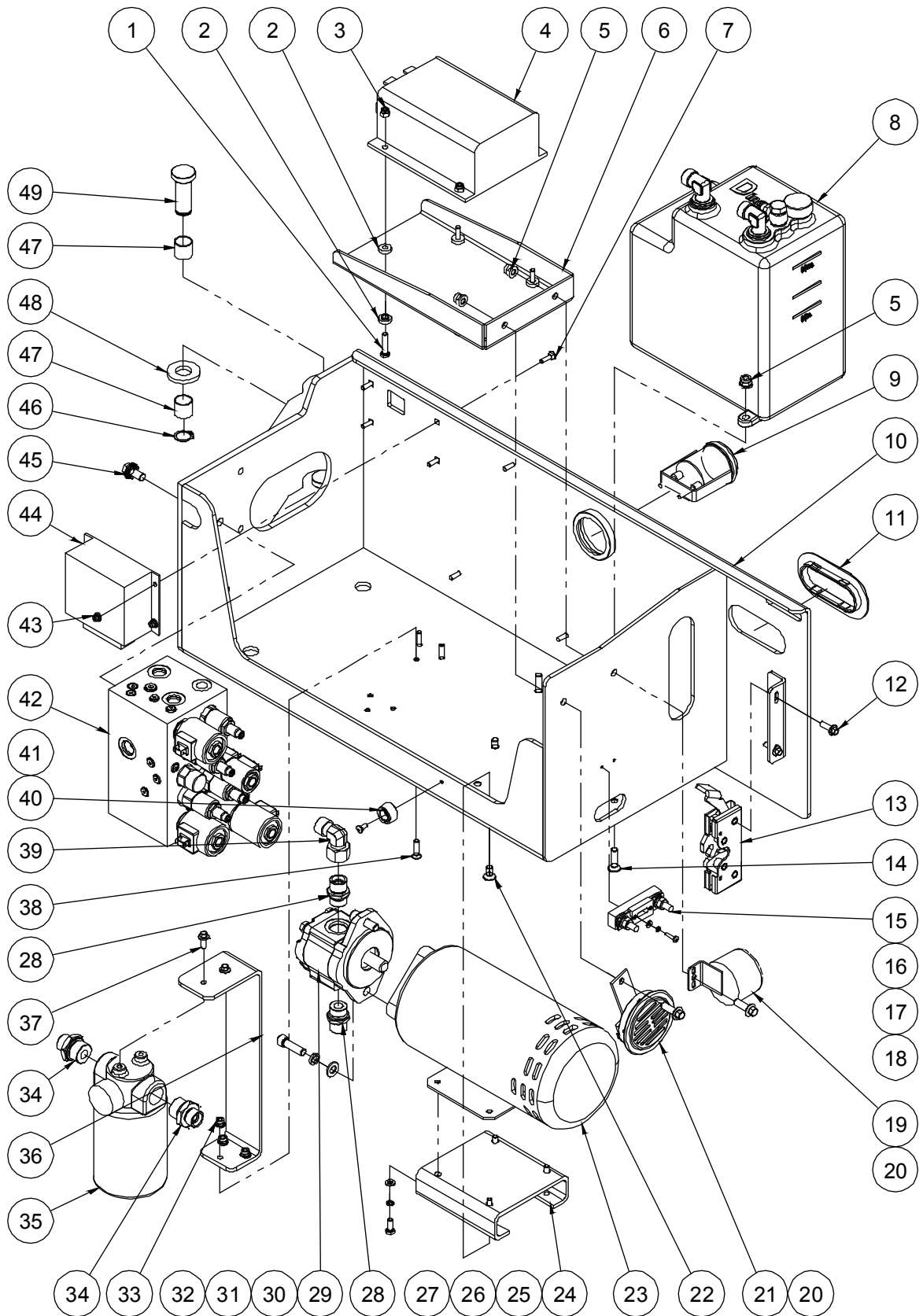


**104.1 Battery Pack Module**

Item	Part No.	Description	Qty.
1	10001040	Battery tray weldment	1
2	00002013	Battery	4
3	00000608	Washer GB/T 97.1 8	2
4	00000609	Washer GB/T 93 8	2
5	00000610	Nut GB/T 6170 M8	2
6	10001050	Hinge pin	2
7	00000359	8812-202320 Bearing	4
8	10001039	Washer	2
9	00000926	Circlips GB/T 894.1-20	2
10	10001095	Bumper	1
11	00002319	Screw GB/T 818 M5×10 - H	1
12	10001038	Threaded rod	1
13	10000481	Latch (left)	1
14	00002574	Nut GB/T 6183.1 M6	2
15	00002866	Bolt QC/T 340 M6×20	2
16	00002075	Power switch	1
17	00001019	Screw GB/T 973 M6×16	2
18	10000540	Handle hole ring	1



105.1 Power Unit Module (S06-EH)



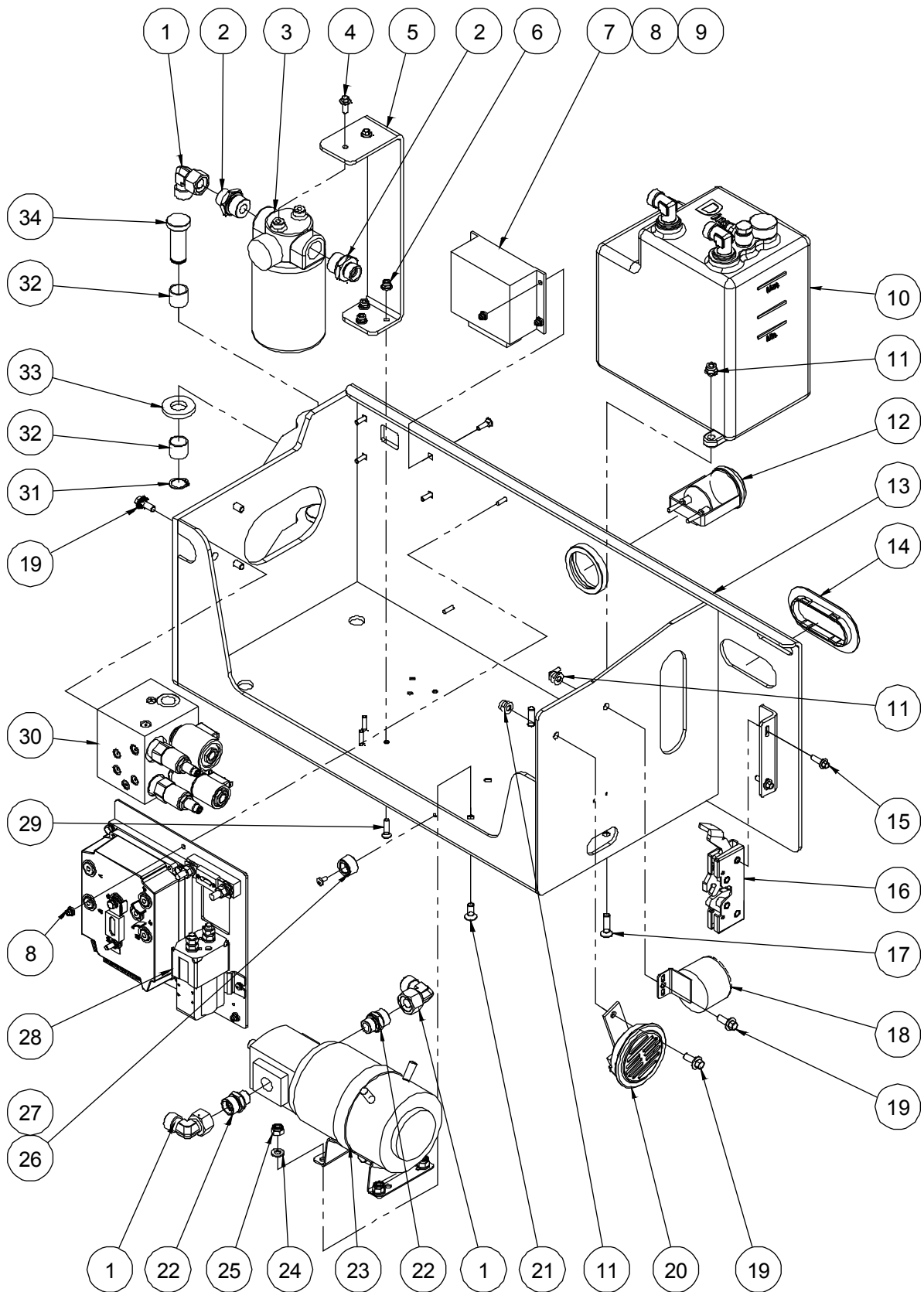
**105.1 Power Unit Module (S06-EH)**

Item	Part No.	Description	Qty.
1	00000775	Bolt GB/T 5783 M6×30	4
2	10001091	Spacer	8
3	00001033	Nut GB/T 6182 M6	4
4	00000693	Motor controller	1
5	00002575	Nut GB/T 6183.1 M8	4
6	10001092	Controller bracket	1
7	10000560	Screw	4
8	10001166	Hydraulic tank assembly (refer to 107.1)	1
9	00000698	Hour meter	1
10	10001053	Hydraulic tray weldment	1
11	10000540	Handle hole ring	1
12	00002866	Bolt QC/T 340 M6×20	2
13	10000480	Latch (right)	1
14	00000839	Screw GB/T 70.3 M8×30	2
15	00001064	250A Fuse assembly	1
--	00001065	250A Fuse	1
--	00000757	Fuse seat	1
16	00000778	Washer GB/T 97.1 4	2
17	00000779	Washer GB/T 93 4	2
18	00001232	Screw GB/T 818 M4×16 - H	2
19	00001244	Alarm	1
20	00002876	Bolt QC/T 340 M8×25	2
21	00000666	Horn	1
22	00000837	Screw GB/T 70.3 M8×16	4
23	00002017	Motor	1
24	10001051	Motor bracket	1
25	00000620	Washer GB/T 97.1 6	4
26	00000621	Washer GB/T 93 6	4
27	00000818	Bolt GB/T 5783 M6×16	4

**105.1 Power Unit Module (S06-EH)**

Item	Part No.	Description	Qty.
28	00001776	Straight fitting	2
29	00000529	Pump	1
30	00000615	Washer GB/T 97.1 10	2
31	00000679	Washer GB/T 93 10	2
32	00001157	3/8-24×1 1/4" Screw ANSI B18.3	2
33	00002574	Nut GB/T 6183.1 M6	3
34	00001508	Straight fitting	2
35	00000535	Filter assembly	1
--	00003061	Filter element	1
36	10001052	Filter bracket	1
37	00002864	Bolt QC/T 340 M6×16	2
38	00000832	Screw GB/T 70.3 M6×25	3
39	00001835	Elbow	1
40	10001095	Bumper	1
41	00002319	Screw GB/T 818 M5×10 - H	1
42	00003015	Function manifold (without fitting) (refer to 402.1)	1
43	00002573	Nut GB/T 6183.1 M5	4
44	00000692	Controller	1
45	00002873	Bolt QC/T 340 M10×20	2
46	00000926	Circlips GB/T 894.1-20	2
47	00000359	8812-202320 Bearing	4
48	10001039	Washer	2
49	10001050	Hinge pin	2

**106.1 Power Unit Module (S06-E)**



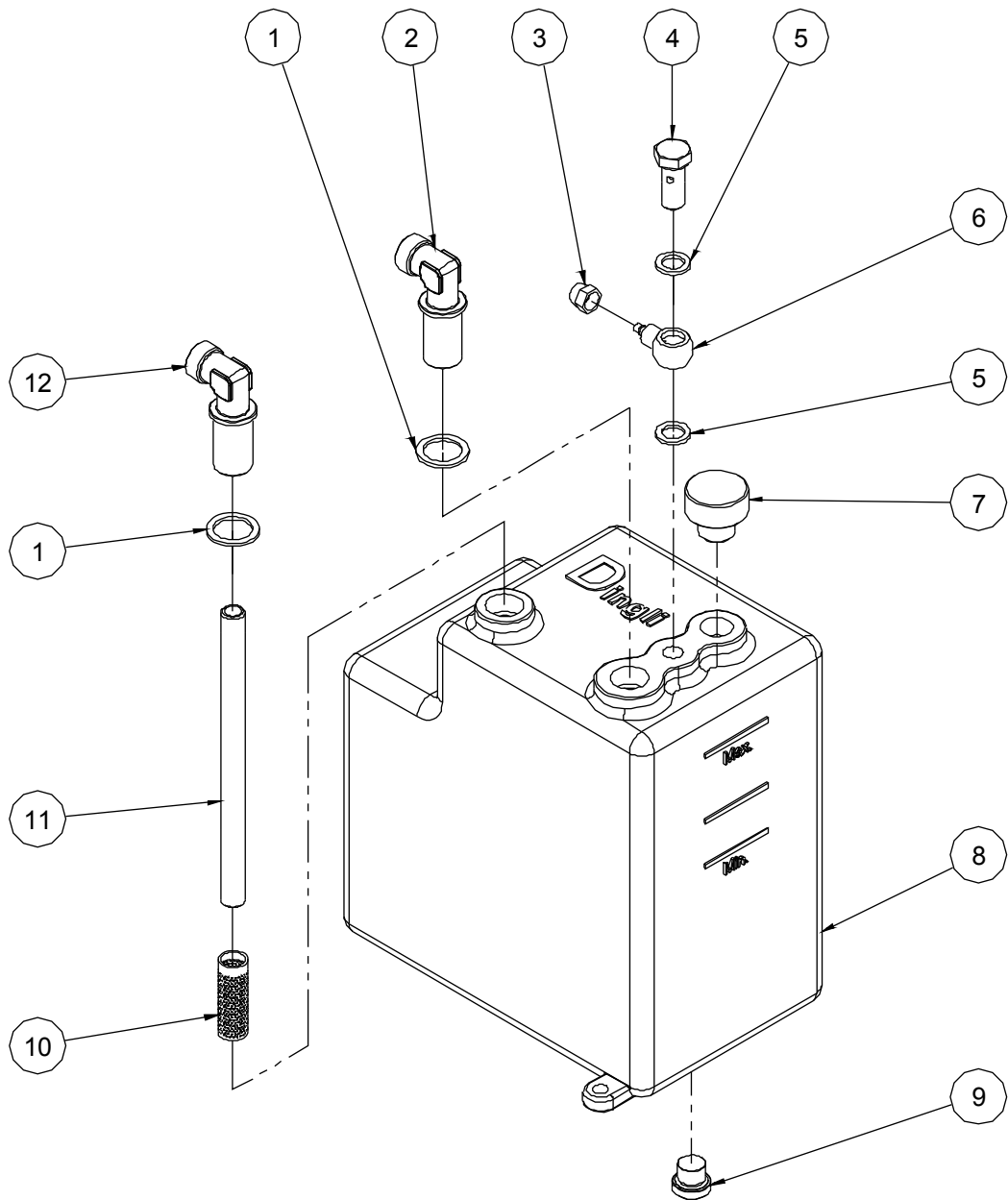
**106.1 Power Unit Module (S06-E)**

Item	Part No.	Description	Qty.
1	00001835	Elbow	3
2	00001508	Straight fitting	2
3	00000535	Filter assembly	1
--	00003061	Filter element	1
4	00002864	Bolt QC/T 340 M6×16	2
5	10001052	Filter bracket	1
6	00002574	Nut GB/T 6183.1 M6	3
7	00000692	Controller	1
8	00002573	Nut GB/T 6183.1 M5	7
9	10000560	Screw	4
10	10001166	Hydraulic tank assembly (refer to 107.1)	1
11	00002575	Nut GB/T 6183.1 M8	4
12	00000698	Hour meter	1
13	10001053	Hydraulic tray weldment	1
14	10000540	Handle hole ring	1
15	00002866	Bolt QC/T 340 M6×20	2
16	10000480	Latch (right)	1
17	00000839	Screw GB/T 70.3 M8×30	2
18	00001244	Alarm	1
19	00002875	Bolt QC/T 340 M8×20	6
20	00000666	Horn	1
21	00002526	Screw GB/T 70.3 M8×20	4
22	00001264	Straight fitting	2
23	00002320	Pump motor assembly	1
--	00002417	Motor	1
--	00002494	Pump	1
24	00000608	Washer GB/T 97.1 8	4
25	00001163	Nut GB/T 6182 M8	4
26	10001095	Bumper	1

**106.1 Power Unit Module (S06-E)**

Item	Part No.	Description	Qty.
27	00002319	Screw GB/T 818 M5×10 - H	1
28		Motor controller assembly (refer to 108.1)	1
29	00000832	Screw GB/T 70.3 M6×25	3
30	00003005	Function manifold (without fitting) (refer to 403.1)	1
31	00000926	Circlips GB/T 894.1-20	2
32	00000359	8812-202320 Bearing	4
33	10001039	Washer	2
34	10001050	Hinge pin	2

**107.1 Hydraulic Tank Assembly**

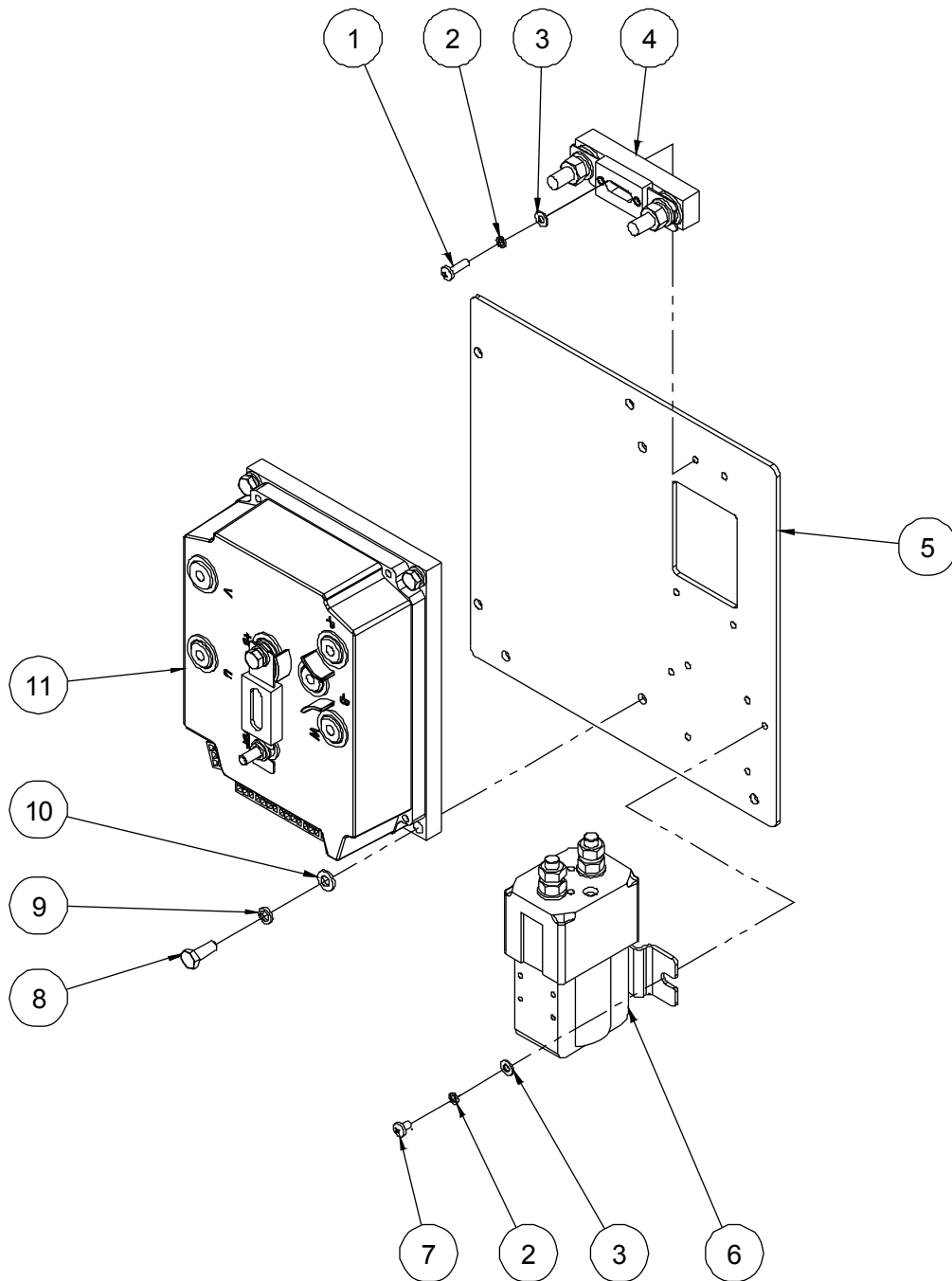


**107.1 Hydraulic Tank Assembly**

Item	Part No.	Description	Qty.
1	00001338	Washer JB/T 982 22	2
2	10000466	Fitting	1
3	10000462	Nut	1
4	10000464	Fitting	1
5	00002518	Washer JB/T 982 13	2
6	10000465	Fitting	1
7	10000398	Breather	1
8	10001167	Tank	1
9	00001113	Plug VST13/8ED	1
10	10001391	Filter 22	1
11	10001169	Suction pipe	1
12	10001390	Fitting	1



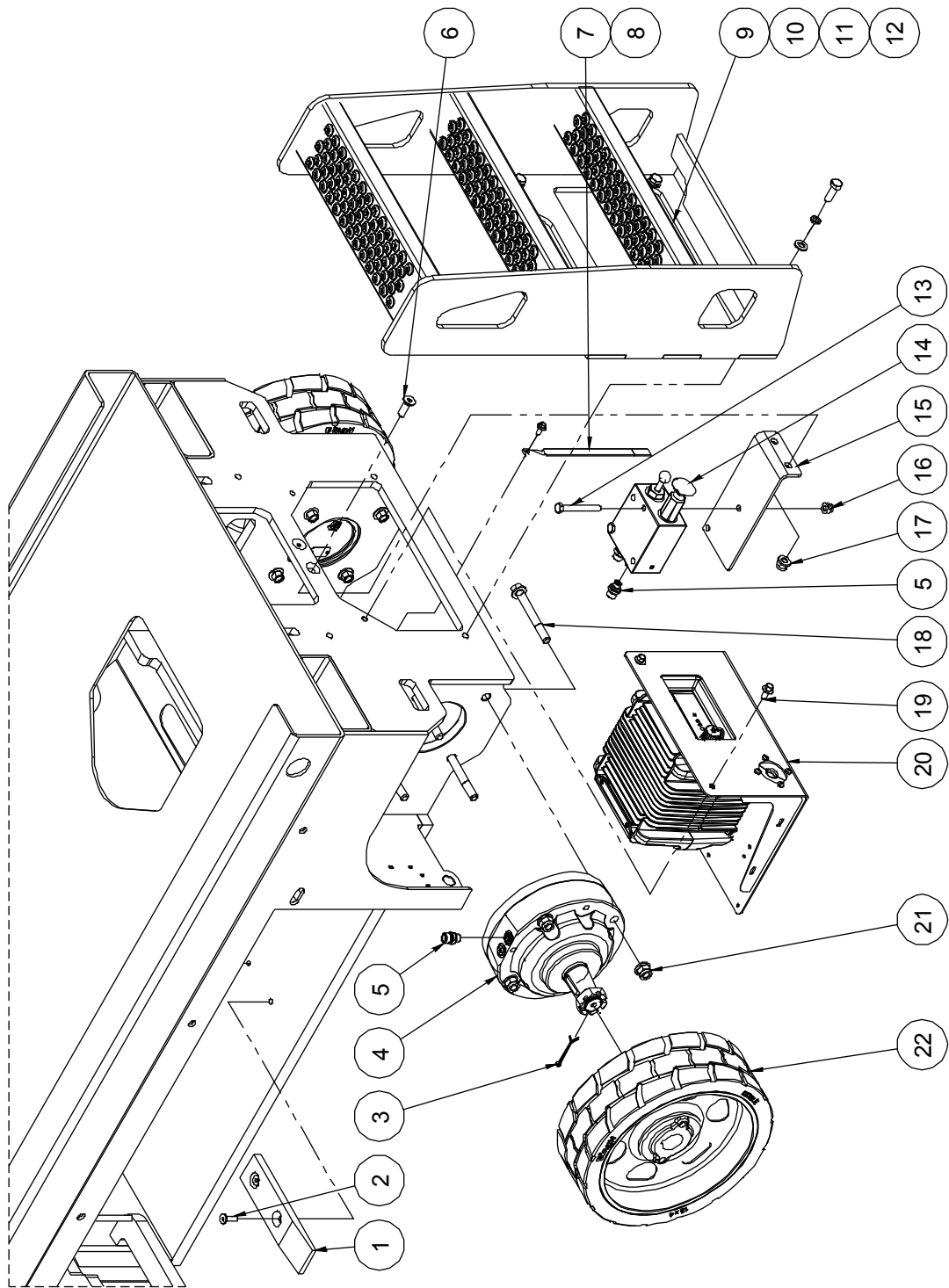
**108.1 Motor Controller Assembly (S06-E)**



**108.1 Motor Controller Assembly (S06-E)**

Item	Part No.	Description	Qty.
1	00002027	Screw GB/T 818 M4×14 - H	2
2	00000779	Washer GB/T 93 4	4
3	00000778	Washer GB/T 97.1 4	4
4	00001064	250A Fuse assembly	1
--	00001065	250A Fuse	1
--	00000757	Fuse seat	1
5	10001110	Mounting plate	1
6	00002485	DC Contactor	1
7	00002032	Screw GB/T 818 M4×6 - H	2
8	00000818	Bolt GB/T 5783 M6×16	4
9	00000621	Washer GB/T 93 6	4
10	00000620	Washer GB/T 97.1 6	4
11	00002483	Motor controller	1

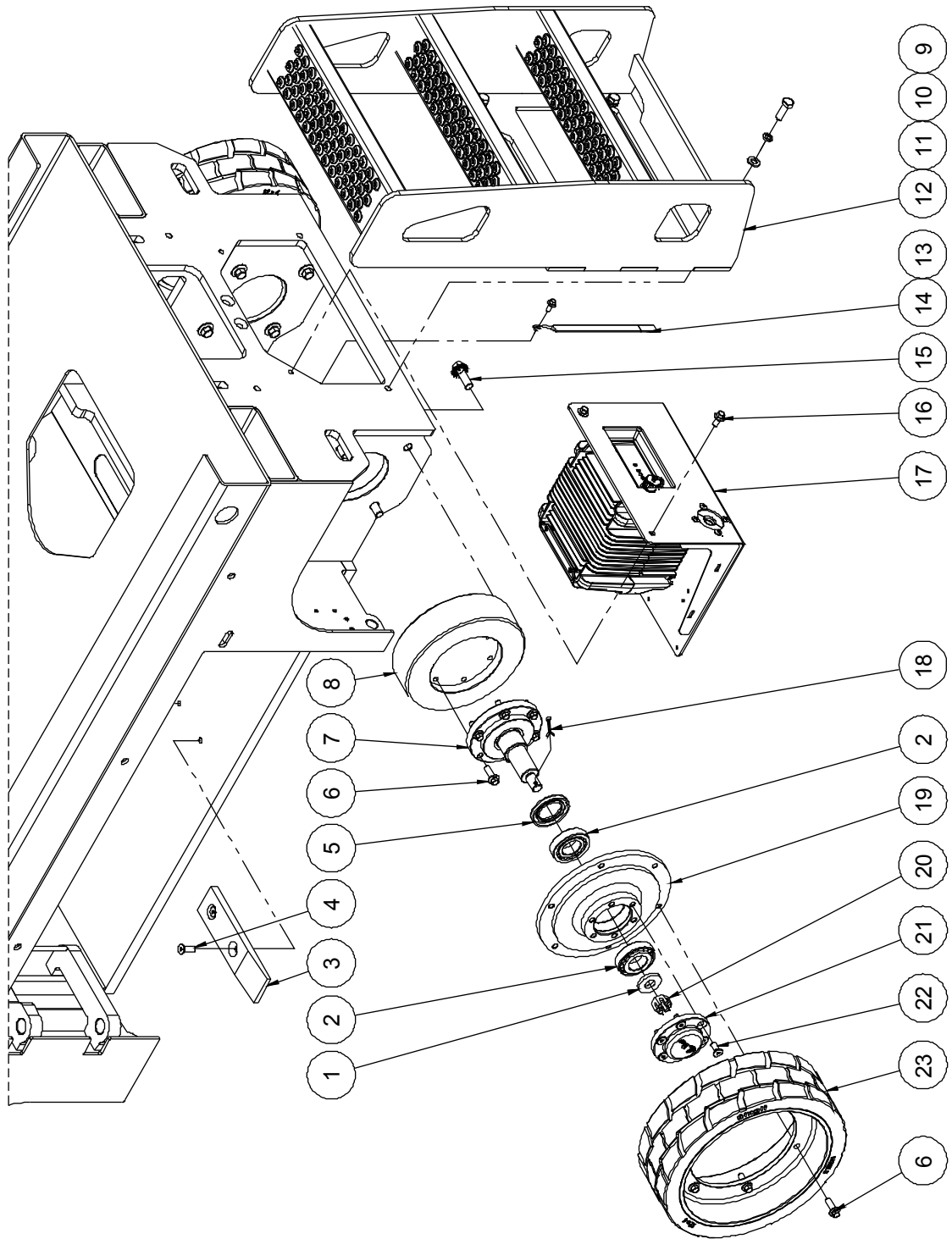
109.1 Rear Wheel and Ladder (S06-EH)



**109.1 Rear Wheel and Ladder (S06-EH)**

Item	Part No.	Description	Qty.
1	10000484	Spacer	2
2	00000838	Screw GB/T 70.3 M8×25	4
3	00000634	Cotter pin GB/T 91 4×50	2
4	00002010	Brake	2
5	00001769	Straight fitting	5
6	00000847	Screw GB/T 70.3 M10×30	2
7	10000487	Ground strap	1
8	00002865	Bolt QC/T 340 M6×14	1
9	10001988	Ladder (without circuit breaker bracket)	1
	10002022	Ladder (with circuit breaker bracket)	1
10	00000615	Washer GB/T 97.1 10	4
11	00000679	Washer GB/T 93 10	4
12	00000683	Bolt GB/T 5783 M10×30	4
13	00001860	Bolt GB/T 5782 M8×70	2
14	00000530	Brake release hand pump manifold	1
15	10000033	Mounting bracket	1
16	00002575	Nut GB/T 6183.1 M8	2
17	00002572	Nut GB/T 6183.1 M10	2
18	00002885	Bolt GB/T 16674 M12×100	8
19	00002872	Bolt QC/T 340 M8×16	2
20		Charger assembly (refer to 111.1)	1
21	00002576	Nut GB/T 6183.1 M12	8
22	10001076	Wheel	2

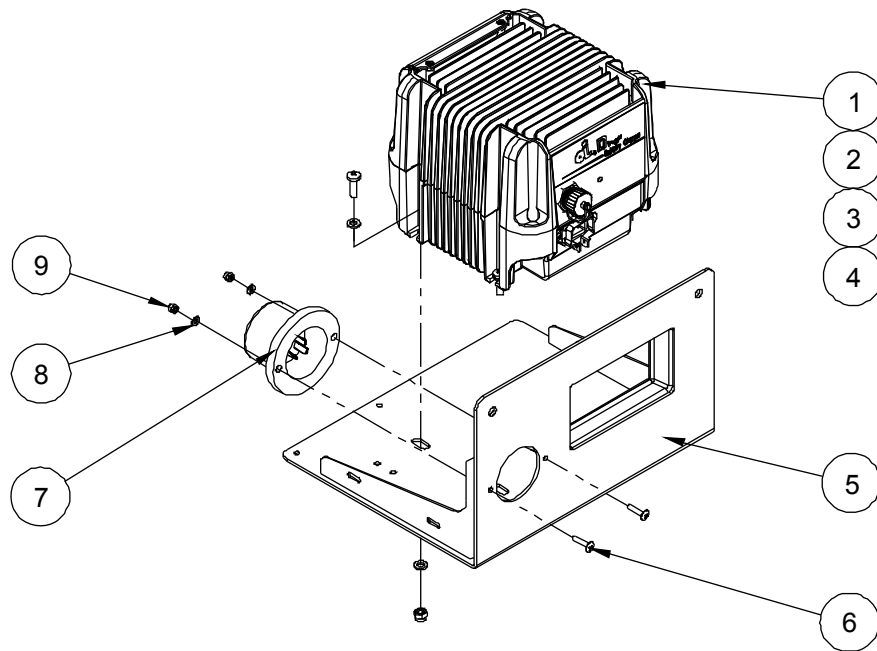
110.1 Rear Wheel and Ladder (S06-E)



**110.1 Rear Wheel and Ladder (S06-E)**

Item	Part No.	Description	Qty.
1	10001104	Washer	2
2	00001129	Bearing 30206	4
3	10000484	Spacer	2
4	00000838	Screw GB/T 70.3 M8×25	4
5	00002082	Seal GB/T 13871.1 FB 38 62 8 III	2
6	00002876	Bolt QC/T 340 M8×25	24
7	10001105	Spindle	2
8	10001101	Terminal pad	2
9	00000683	Bolt GB/T 5783 M10×30	4
10	00000679	Washer GB/T 93 10	4
11	00000615	Washer GB/T 97.1 10	4
12	10001988	Ladder (without circuit breaker bracket)	1
	10002022	Ladder (with circuit breaker bracket)	1
13	00002865	Bolt QC/T 340 M6×14	1
14	10000487	Ground strap	1
15	00002878	Bolt QC/T 340 M12×35	8
16	00002872	Bolt QC/T 340 M8×16	2
17		Charger assembly (refer to 111.1)	1
18	00002480	Cotter pin GB/T 91 4×36	2
19	10001103	Bearing seat	2
20	00002077	Nut GB/T 9459 M16×1.5	2
21	10000638	Cap	2
22	00000765	Screw GB/T 70.3 M8×20	12
23	10001097	Wheel	2

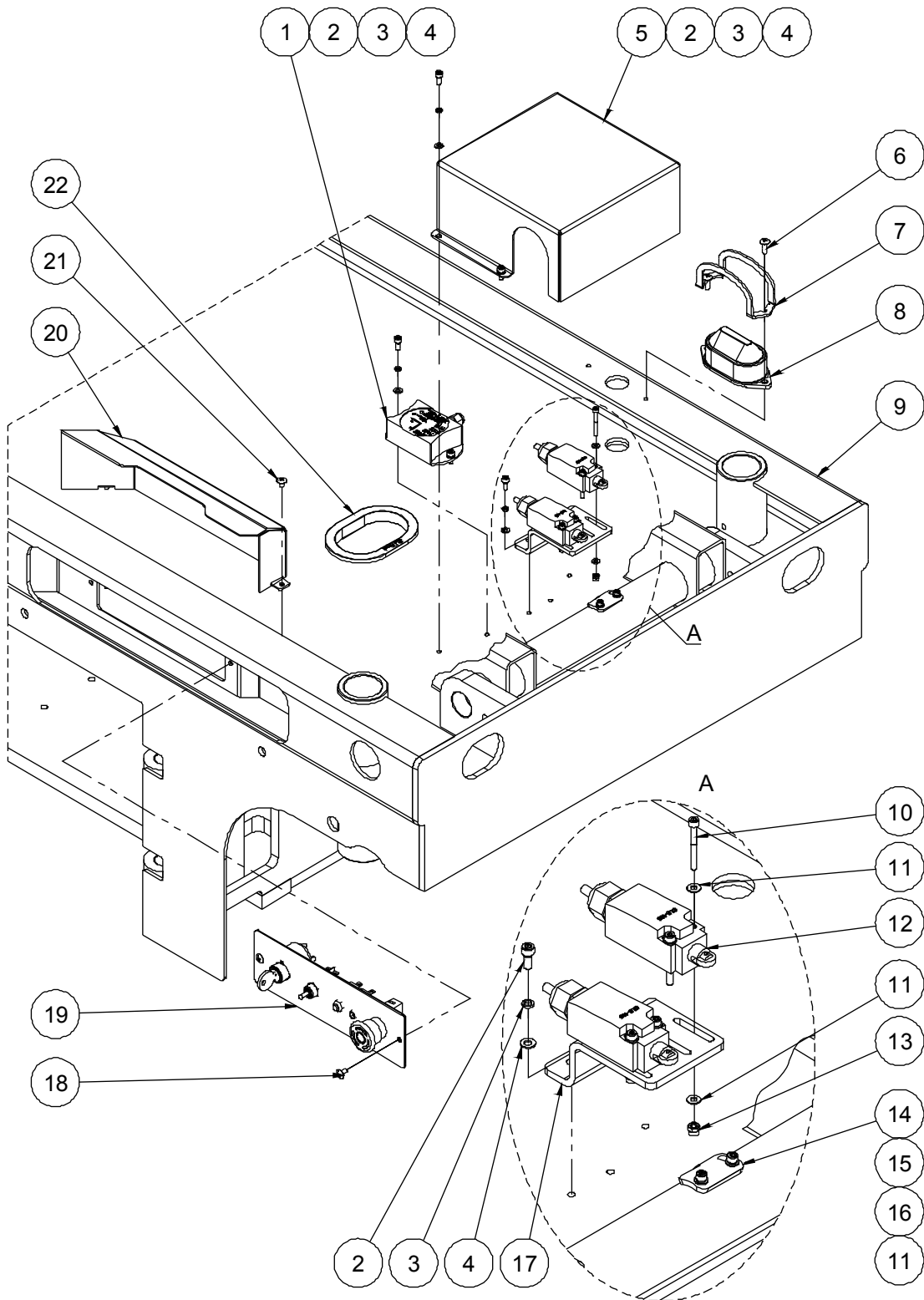
**111.1 Charger Assembly**



**111.1 Charger Assembly**

Item	Part No.	Description	Qty.
1	0000689	Charger	1
2	00001166	Screw GB/T 818 M6×20 - H	4
3	00000620	Washer GB/T 97.1 6	8
4	00001033	Nut GB/T 6182 M6	4
5	10001606	Charger bracket weldment	1
6	00001006	Screw GB/T 973 M4×20	2
7	00002564	Plug	1
8	00000778	Washer GB/T 97.1 4	2
9	00001236	Nut GB/T 889.1 M4	2

### 112.1 Ground Control and Limit Switch

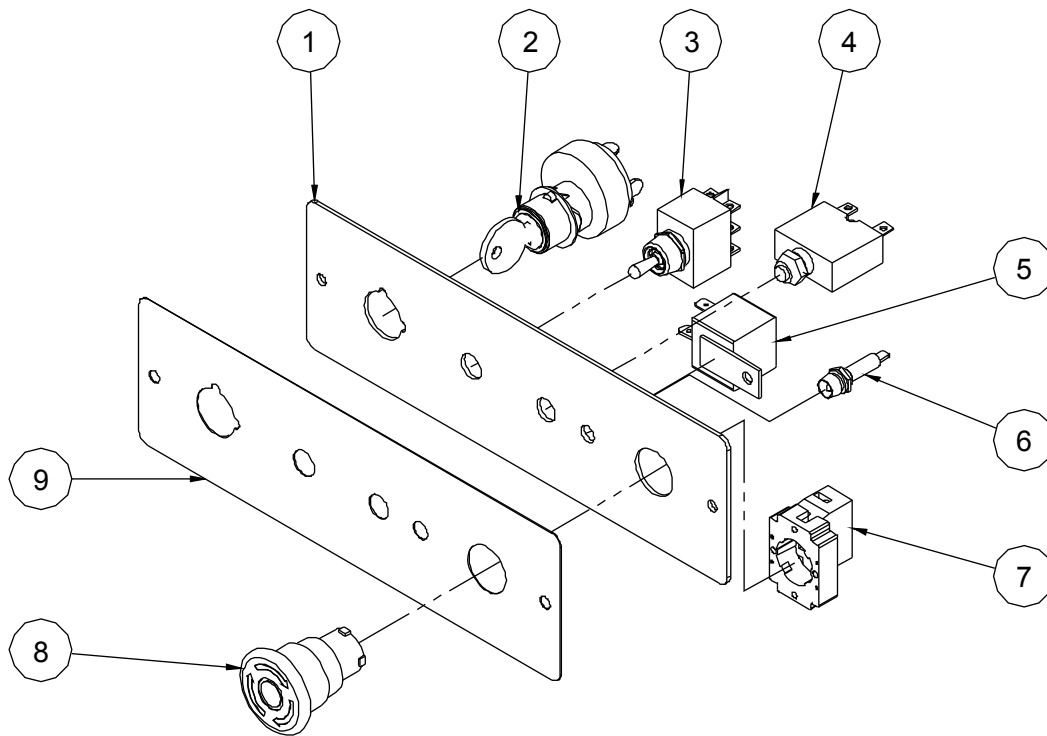




**112.1 Ground Control and Limit Switch**

Item	Part No.	Description	Qty.
1	00000694	Tilt sensor	1
2	00001252	Screw GB/T 70.1 M5×12	8
3	00000606	Washer GB/T 93 5	8
4	00000605	Washer GB/T 97.1 5	8
5	10001003	Cover	1
6	00002523	Screw GB/T 973 M5×16	2
7	10000488	Beacon cover	1
8	00000740	Beacon	1
9	10001865	Frame weldment	1
10	00001235	Screw GB/T 70.1 M4×35	4
11	00000778	Washer GB/T 97.1 4	10
12	00000739	Limit switch	2
13	00001236	Nut GB/T 889.1 M4	4
14	10001005	Signal plate	1
15	00001054	Screw GB/T 70.1 M4×12	2
16	00000779	Washer GB/T 93 4	2
17	10001004	Switch bracket	1
18	00000999	Screw GB/T 973 M5×10	2
19		Ground control assembly (S06-EH) (refer to 113.1)	1
		Ground control assembly (S06-E) (refer to 114.1)	1
20	10001033	Cover	1
21	00001010	Screw GB/T 973 M5×8	2
22	10000039	Sheath	1

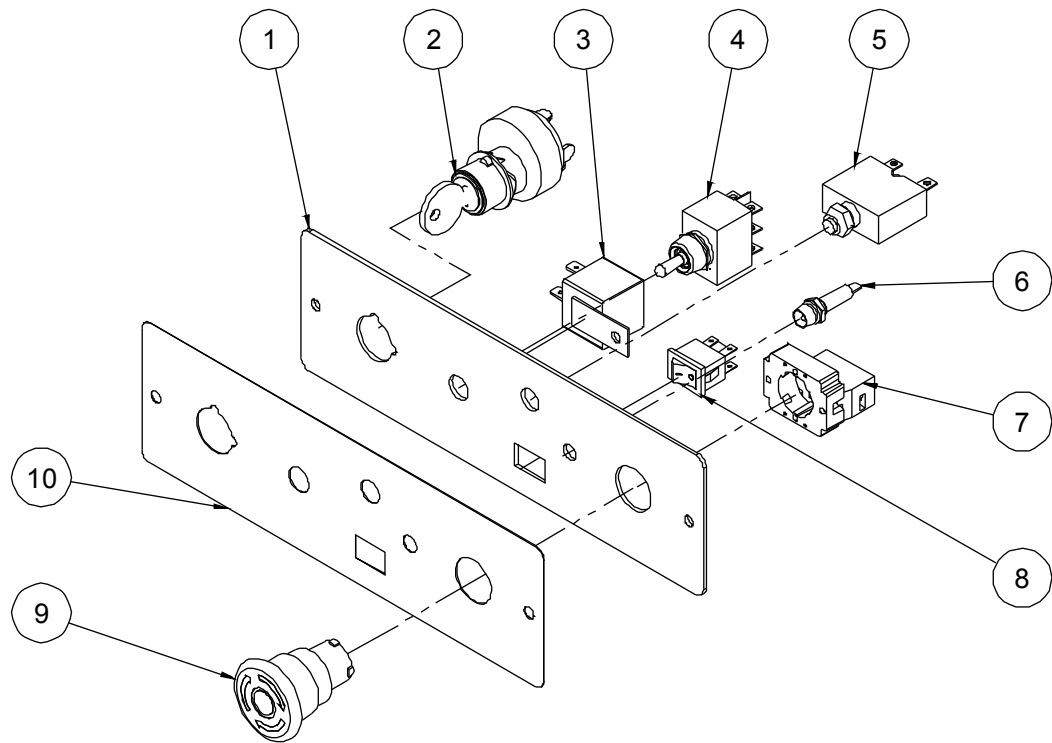
**113.1 Ground Control Assembly (S06-EH)**



**113.1 Ground Control Assembly (S06-EH)**

Item	Part No.	Description	Qty.
1	10000496	Ground control panel	1
2	00001243	Key switch	1
--	00003050	Key	1
3	00000738	Toggle switch	1
4	00000697	Circuit breaker	1
5	00002561	Relay	1
6	00000734	Indicator	1
7	00000752	Base with 1 NC contact	1
8	00000754	Red mushroom head	1
9	09110001	Decal, Ground control panel	1

**114.1 Ground Control Assembly (S06-E)**

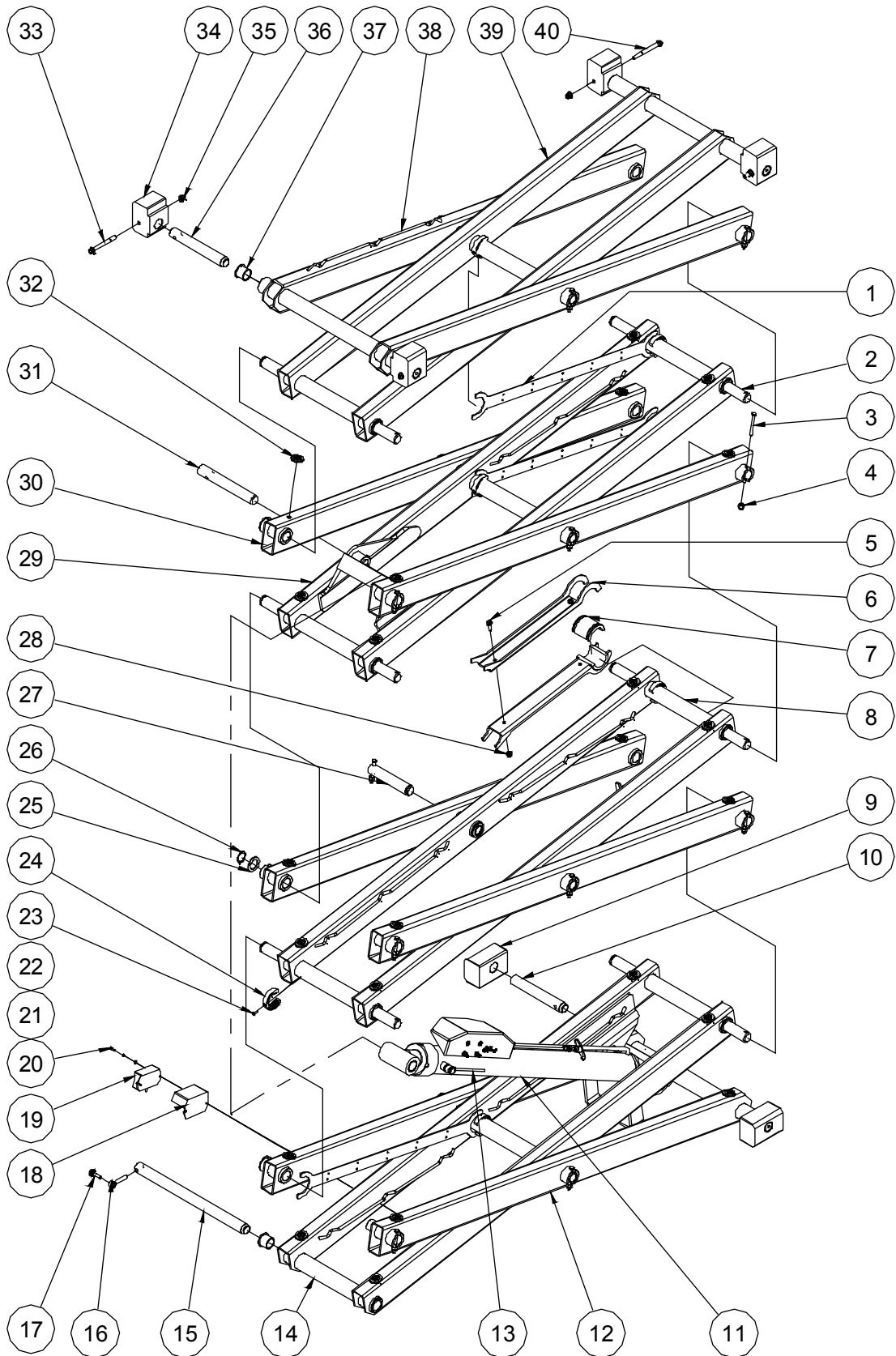


**114.1 Ground Control Assembly (S06-E)**

Item	Part No.	Description	Qty.
1	10001108	Ground control panel	1
2	00001243	Key switch	1
--	00003050	Key	1
3	00002561	Relay	1
4	00000738	Toggle switch	1
5	00000697	Circuit breaker	1
6	00000734	Indicator	1
7	00000752	Base with 1 NC contact	1
8	00002416	Brake release switch	1
9	00000754	Red mushroom head	1
10	09110002	Decal, Ground control panel	1

# **Section 2 Scissor**

201.1 Scissor Assembly



**201.1 Scissor Assembly**

Item	Part No.	Description	Qty.
1	10001185	Cable bridge	3
2	00000564	898-32×562.5 Pin	9
3	00001860	Bolt GB/T 5782 M8×70	15
4	00000623	Nut GB/T 6182 M10	15
5	00002876	Bolt QC/T 340 M8×25	2
6	10001184	Safety arm	2
7	10001183	Safety arm bushing	2
8	10001209	Inner arm 2	1
9	10001181	Chassis slider	2
10	00002314	896B-32×25 Pin	2
11		Lift cylinder assembly (refer to 401.1)	1
12	10001188	Outer arm 1	1
13	10001161	Hose	1
14	10001193	Inner arm 1	1
15	00000573	896-32458 Pin	1
16	00000219	8902-10060 Pin	1
17	00002877	Bolt QC/T 340 M10×35	1
18	10000251	Sensor cover (Option)	1
19	00000695	Angle sensor (Option)	1
20	00001054	Screw GB/T 70.1 M4×12(Option)	2
21	00000779	Washer GB/T 93 4 (Option)	2
22	00000778	Washer GB/T 97.1 4 (Option)	2
23	00000822	Screw GB/T 70.3 M5×16	6
24	10001187	Collar	6
25	10001182	Washer	11
26	00000932	Circlips GB/T 894.1-32	11
27	00000563	898-32×152.5 Pin	2
28	00002575	Nut GB/T 6183.1 M8	2
29	10001212	Inner arm 3	1

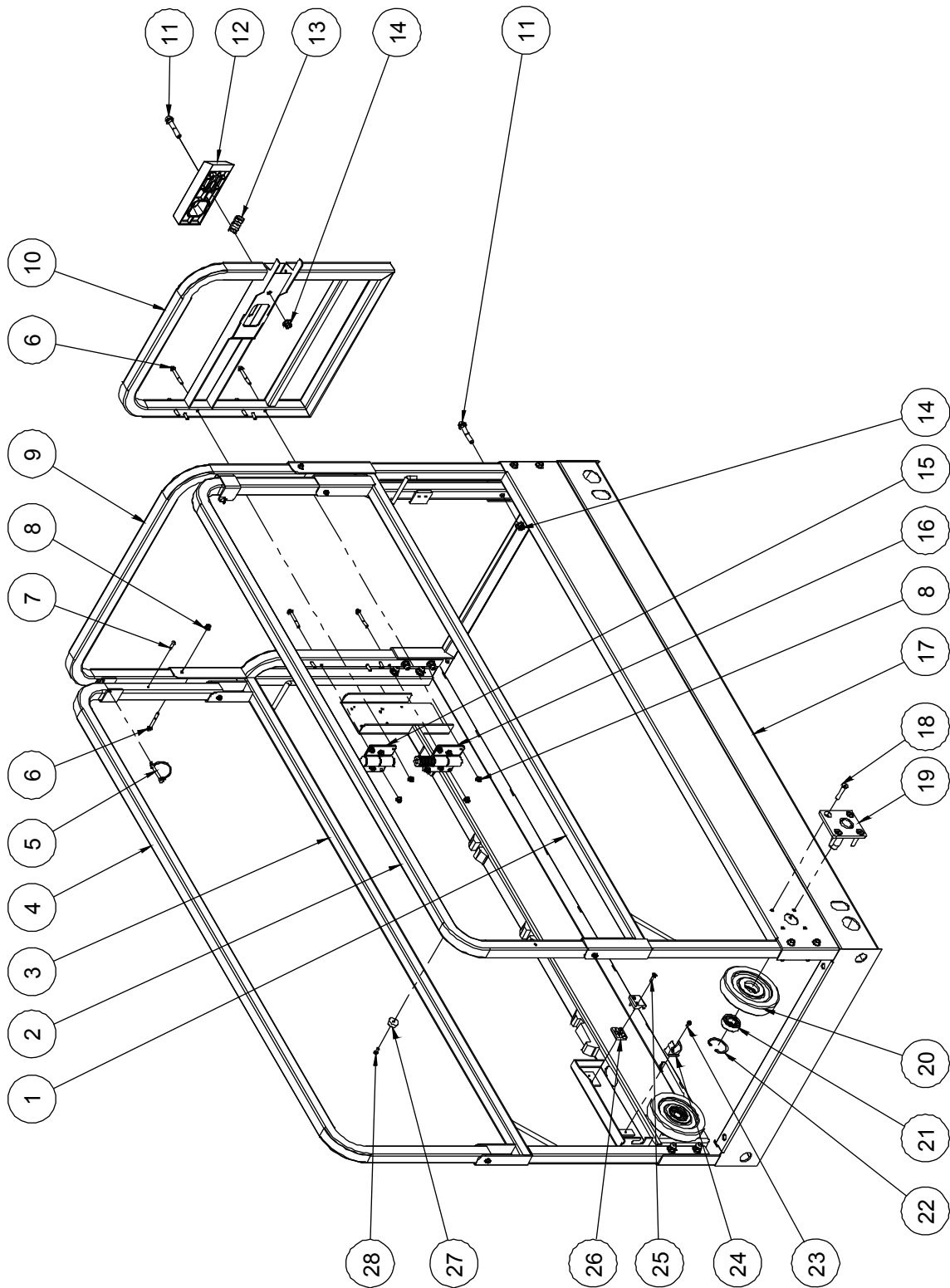
**201.1 Scissor Assembly**

Item	Part No.	Description	Qty.
30	10001207	Outer arm 2	2
31	00000589	895-32×192.5 Pin	2
32	10000264	Block	24
33	00002884	Bolt GB/T 16674 M10×100	2
34	10001186	Platform slider	4
35	00002572	Nut GB/T 6183.1 M10	4
36	00002315	896B-32×205 Pin	4
37	00000228	8822-3230 Bearing	28
38	10001213	Outer arm 4	1
39	10001215	Inner arm 4	1
40	00002891	Bolt GB/T 16674 M10×110	2

# **Section 3 Platform**



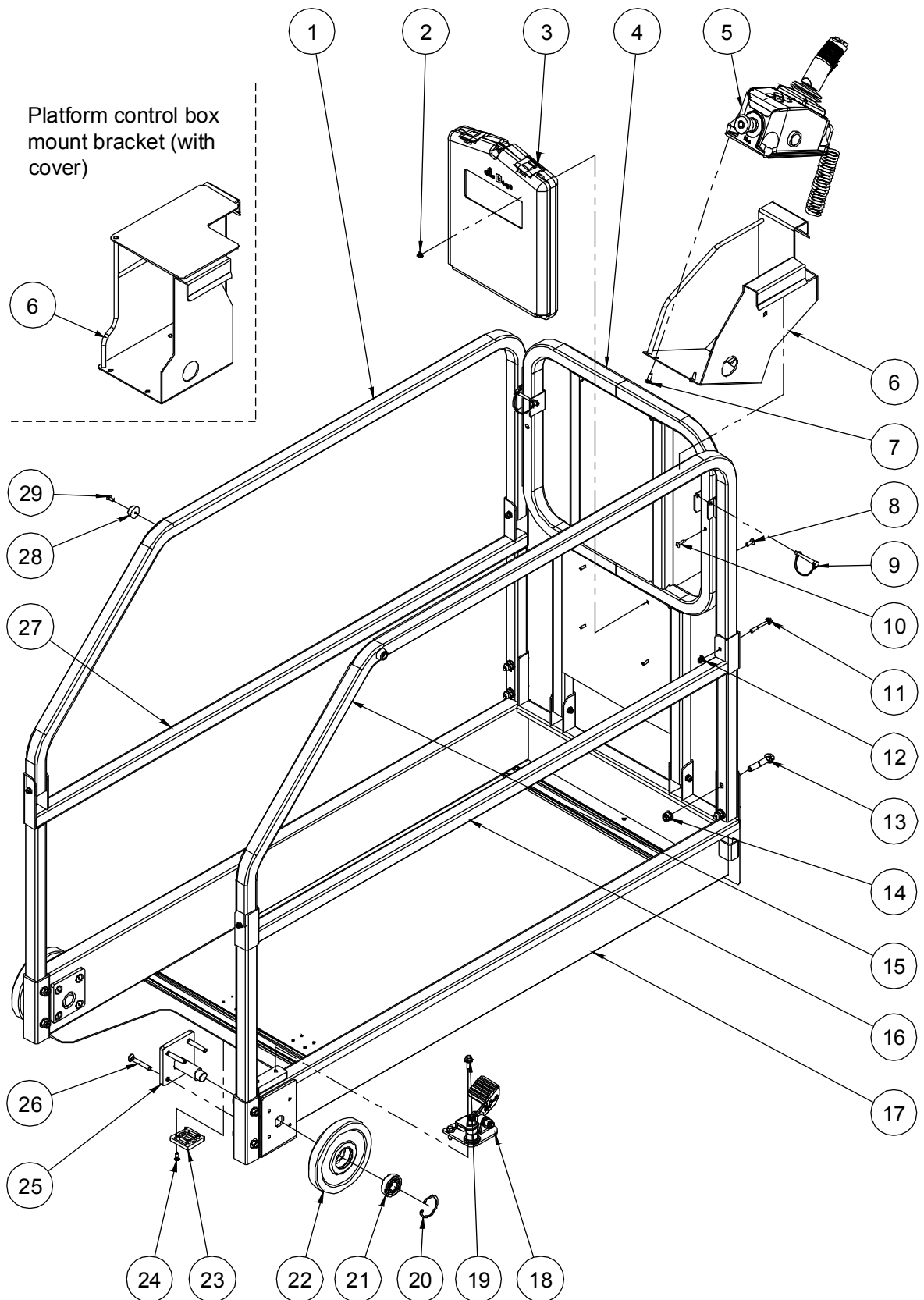
### 301.1 Main Platform Assembly



**301.1 Main Platform Assembly**

Item	Part No.	Description	Qty.
1	10000950	Lower main rail, left	1
2	10002106	Upper main rail, left	1
3	10000932	Lower main rail, right	1
4	10002107	Upper main rail, right	1
5	10001178	Inserted pin	2
6	00002581	Bolt GB/T 16674 M6×50	18
7	00001991	Rivet GB/T 12618.4 4.8×16	2
8	00002574	Nut GB/T 6183.1 M6	18
9	10002102	Rear rail	1
10	10000940	Entry gate	1
11	00002547	Bolt GB/T 16674 M10×55	13
12	10000331	Latch handle	1
13	10000367	Spring	1
14	00002572	Nut GB/T 6183.1 M10	13
15	10000299	Hinge A	1
16	10000302	Hinge B	1
17	10000894	Main deck weldment	1
18	00001154	Screw GB/T 70.3 M8×45	8
19	10000307	Roller bracket	2
20	10000306	Roller	2
21	00001295	Bearing GB/T 276-1994 - 6204	2
22	00000887	Circlips GB/T 893.1-47	2
23	00004385	Screw GB/T 823 M4×8	1
24	00001823	Clip 24	1
25	00002064	Screw GB/T 70.1 M4×20	2
26	10001776	Wire clip	2
27	10000376	Bumper	1
28	00000607	Screw GB/T 818 M5×12 - H	1

### 302.1 Platform Extension Assembly



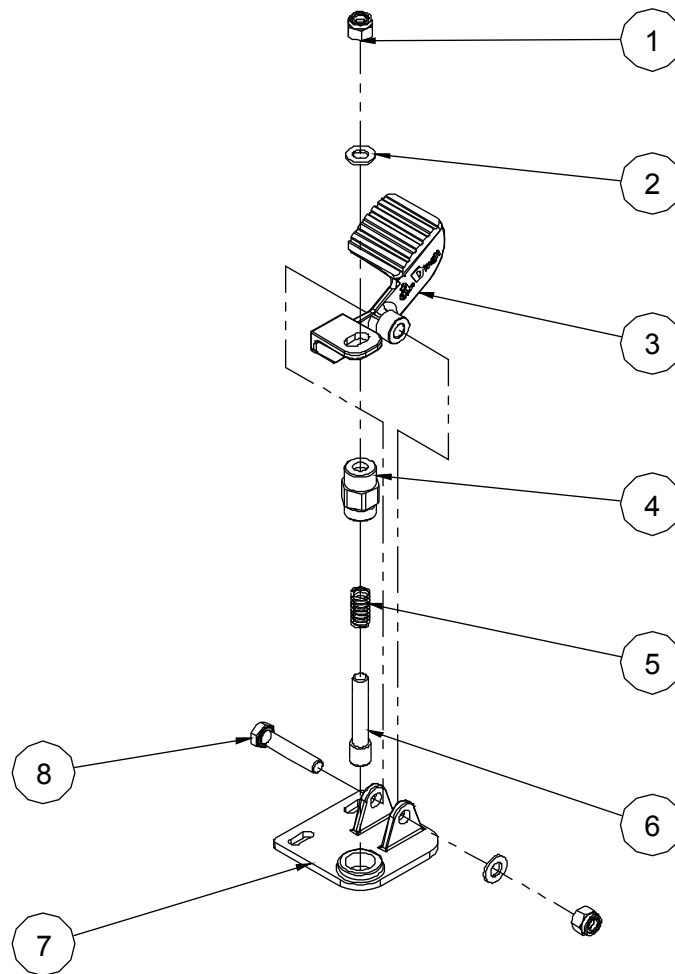
**302.1 Platform Extension Assembly**

Item	Part No.	Description	Qty.
1	10002100	Upper extension rail, left	1
2	00002573	Nut GB/T 6183.1 M5	4
3	50000555	Manual box	1
4	10002097	Front rail	1
5	00000706	Platform control box assembly	1
6	10000390	Platform control box mount bracket	1
	10001715	Platform control box mount bracket (with cover)	1
7	00001986	Screw GB/T 818 M6×16 - H	4
8	00002523	Screw GB/T 973 M5×16	4
9	10001178	Inserted pin	2
10	00001991	Rivet GB/T 12618.4 4.8×16	2
11	00002581	Bolt GB/T 16674 M6×50	6
12	00002574	Nut GB/T 6183.1 M6	6
13	00002547	Bolt GB/T 16674 M10×55	8
14	00002572	Nut GB/T 6183.1 M10	8
15	10002104	Upper extension rail, right	1
16	10000913	Lower extension rail, right	1
17	10000904	Extension deck weldment	1
18	10000333	Platform locking device assembly	1
19	00002875	Bolt QC/T 340 M8×20	2
20	00000887	Circlips GB/T 893.1-47	2
21	00001295	Bearing GB/T 276-1994 - 6204	2
22	10000305	Roller 2	2
23	10000046	Slide pad	2
24	00000822	Screw GB/T 70.3 M5×16	8
25	10000307	Roller bracket	2
26	00001155	Screw GB/T 70.3 M8×55	8
27	10000918	Lower extension rail, left	1
28	10000376	Bumper	2

**302.1 Platform Extension Assembly**

<b>Item</b>	<b>Part No.</b>	<b>Description</b>	<b>Qty.</b>
29	00000607	Screw GB/T 818 M5×12 - H	2

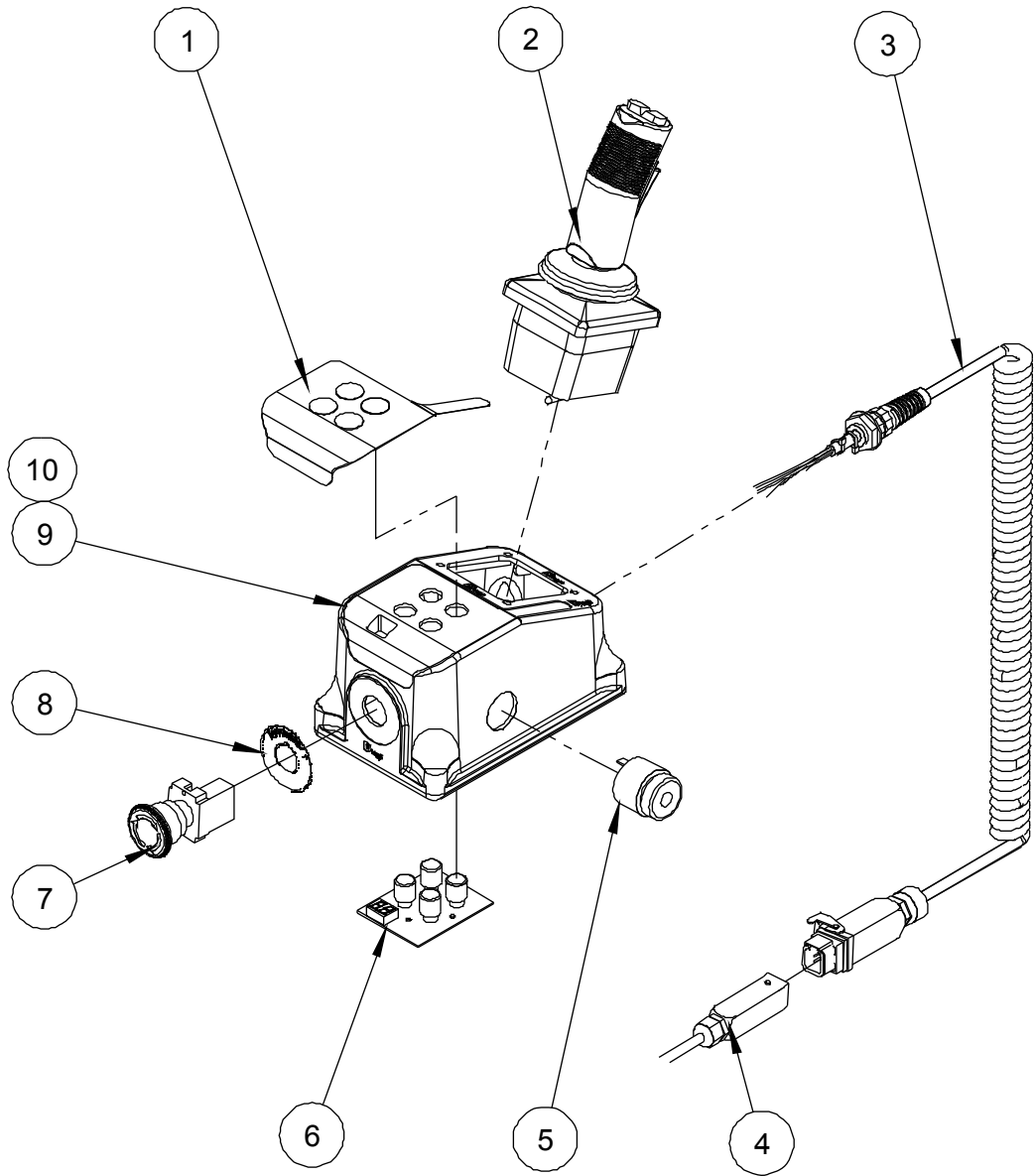
### 303.1 Platform Locking Device Assembly



### 303.1 Platform Locking Device Assembly

Item	Part No.	Description	Qty.
1	00000623	Nut GB/T 6182 M10	2
2	00000615	Washer GB/T 97.1 10	2
3	10000334	Foot pedal	1
4	10000337	Lock pin housing	1
5	10000336	Spring	1
6	10000338	Lock pin	1
7	10000339	Bracket	1
8	00002030	Bolt GB/T 5782 M10×50	1

**304.1 Platform Control Box Assembly**

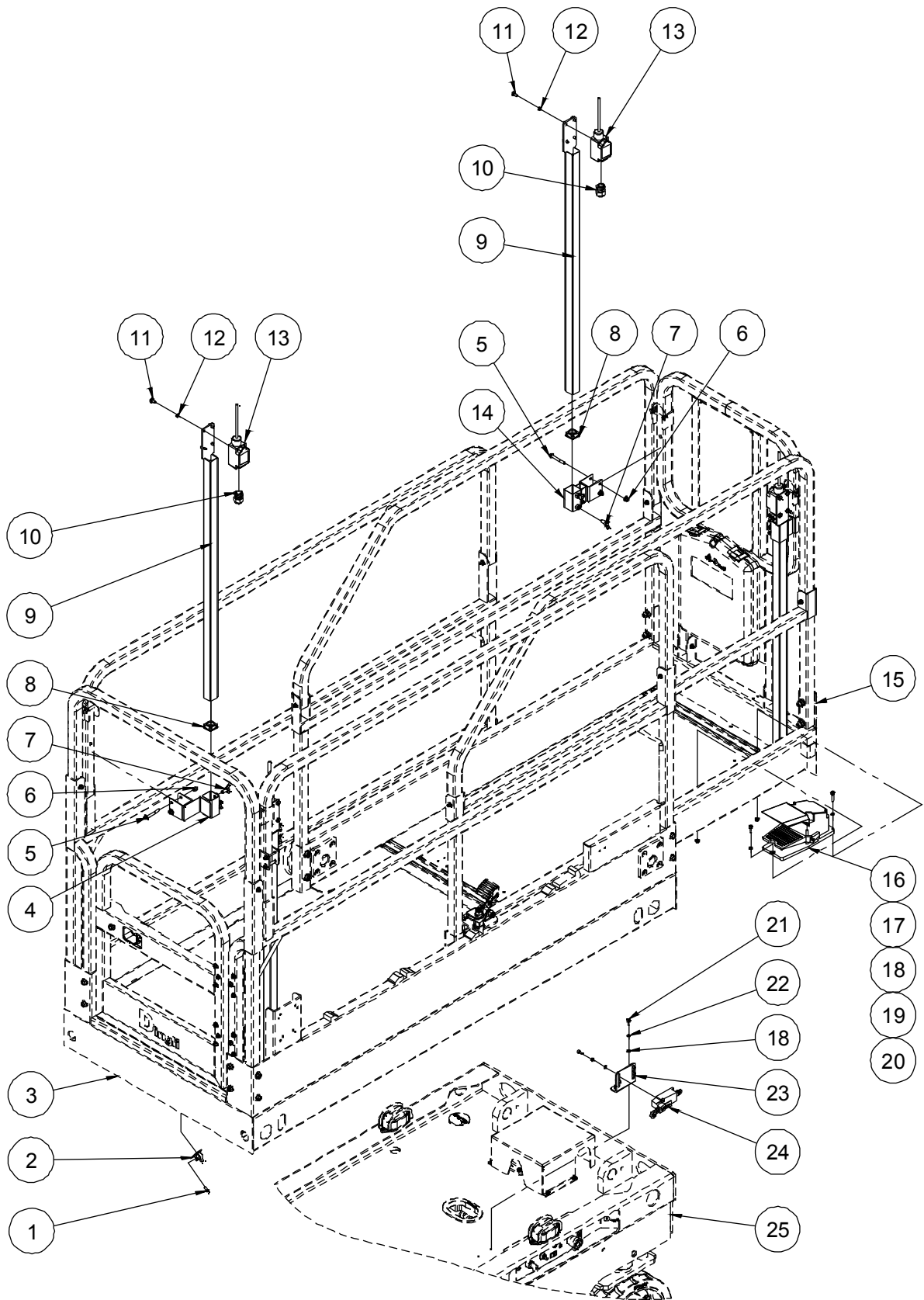


**304.1 Platform Control Box Assembly**

Item	Part No.	Description	Qty.
1	09140001	Decal, Platform control panel	1
2	00000711	Joystick	1
--	00003033	Function enable switch	1
--	00003034	Joystick cover	1
--	00003035	Joystick steer switch	1
--	00003036	Switch boot	1
3	00000714	Coil cord	1
--	00003037	Housing	1
--	00003039	Male insert	1
--	00003041	Male contacts	5
--	00003043	Cable gland	1
4	00002698	Platform control box harness	1
--	00003042	Hood	1
--	00003040	Female insert	1
--	00003038	Female contacts	5
--	00003043	Cable gland	2
5	00000712	Alarm	1
--	00003044	Alarm nut	1
6	00000709	Main board	1
--	00000710	Button	4
7	00000713	Emergency stop switch	1
--	00003045	Red mushroom head	1
--	00003046	Base with 1 NC contact	1
8	00002328	Decal, Emergency stop panel	1
9	00000708	Enclosure	1
10	00000707	Cover bottom	1



**305.1 Protective Device Assembly (Option)**

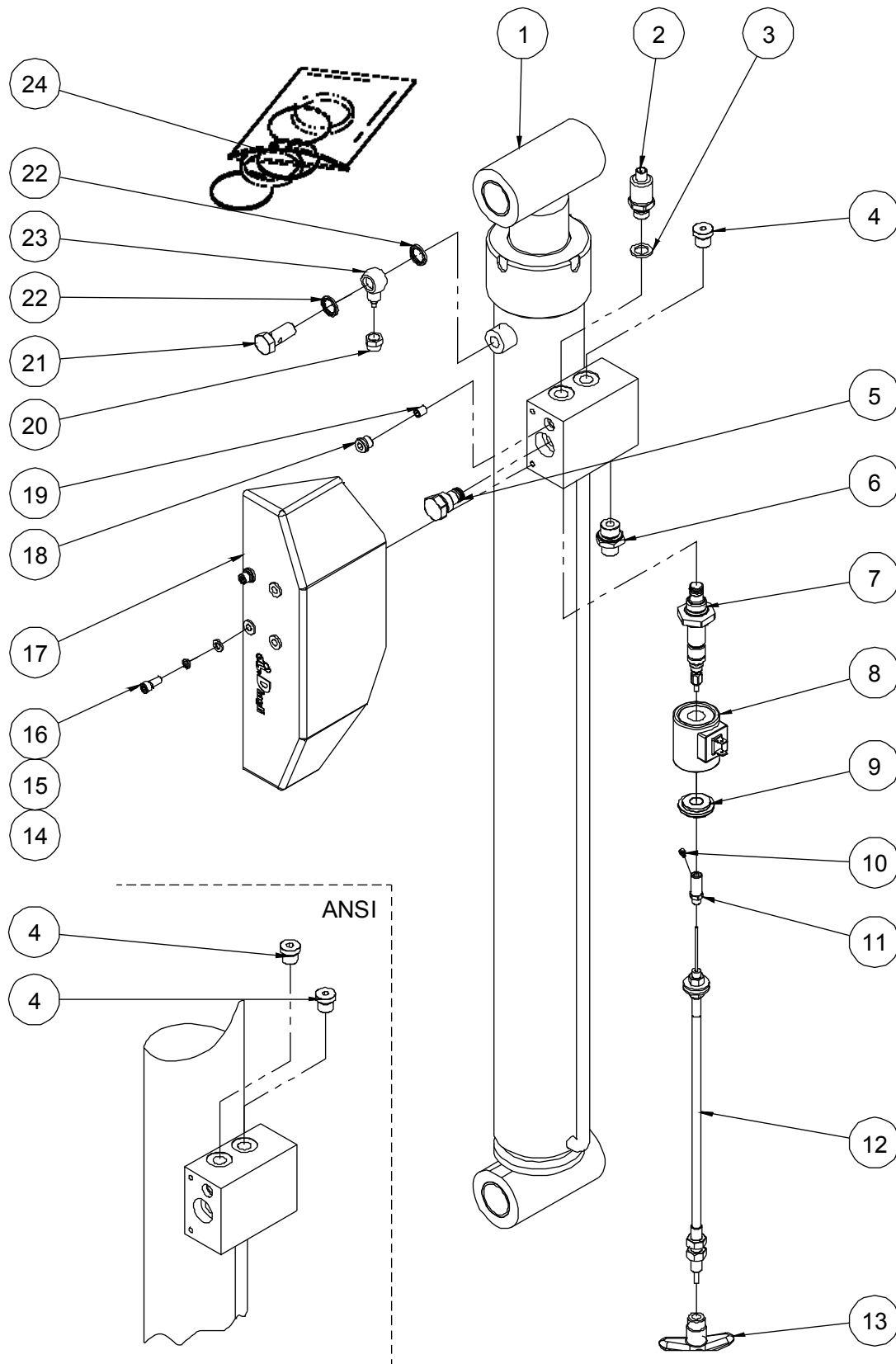


**305.1 Protective Device Assembly (Option)**

Item	Part No.	Description	Qty.
1	00000607	Screw GB/T 818 M5×12 - H	1
2	00002758	Wire clip	1
3	10002214	Main deck weldment	1
4	10001714	Bracket	2
5	00002581	Bolt GB/T 16674 M6×50	8
6	00002574	Nut GB/T 6183.1 M6	8
7	00002586	Screw M8×16	8
8	10003413	Plug	4
9	10001704	Switch rod	4
10	00001827	Water-proof joint M18	4
11	00001060	Screw GB/T 818 M6×12 - H	16
12	00000621	Washer GB/T 93 6	16
13	00002606	Limit switch	4
14	10001701	Bracket	2
15	10002213	Extension deck weldment	1
16	00002613	Footswitch	1
17	00002484	Screw GB/T 70.1 M5×25	2
18	00000605	Washer GB/T 97.1 5	9
19	00001246	Screw GB/T 70.1 M5×16	1
20	00002573	Nut GB/T 6183.1 M5	3
21	00001252	Screw GB/T 70.1 M5×12	6
22	00000606	Washer GB/T 93 5	6
23	10001720	Switch bracket	1
24	00002354	Limit switch	1
25	10002002	Frame weldment	1

# **Section 4 Hydraulic System**

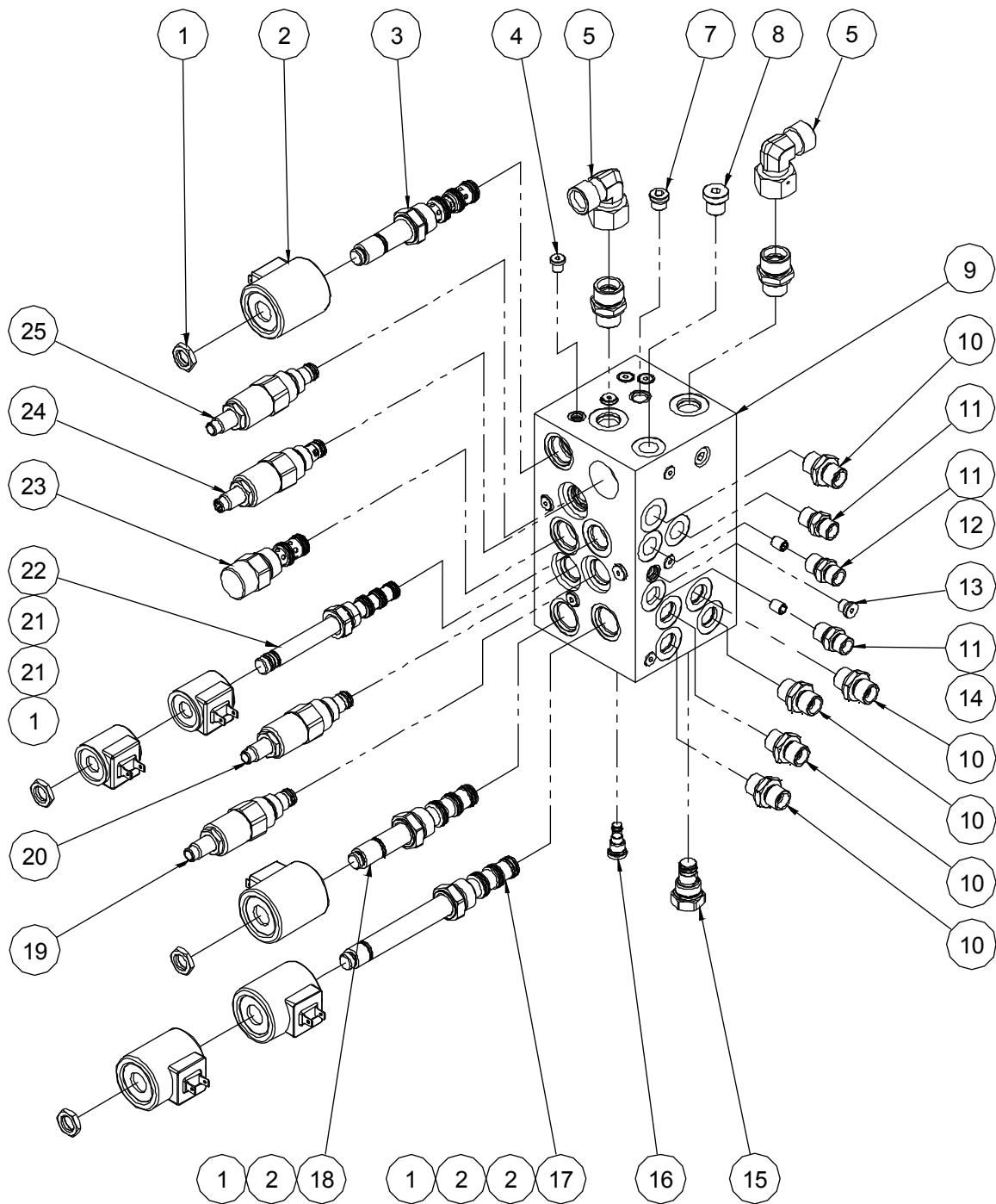
### 401.1 Lift Cylinder Assembly



**401.1 Lift Cylinder Assembly**

Item	Part No.	Description	Qty.
1	10001137	Lift cylinder	1
2	00002418	Pressure sensor (Option)	1
3	00002518	Washer JB/T 982 13 (Option)	1
4	00001073	Plug VST114×1.5ED	1
5	10000404	Check valve	1
6	00001292	Straight fitting	1
7	00003022	Solenoid valve spool	1
8	00003019	Coil	1
9	00003020	Nut	1
10	00001054	Screw GB/T 70.1 M4×12	1
11	10000413	Cable connector	1
12	10001163	Emergency down cable assembly	1
13	10000410	Lowering knob JB/T 7274.6 BM5×70	1
14	00000620	Washer GB/T 97.1 6	2
15	00000621	Washer GB/T 93 6	2
16	00000876	Screw GB/T 70.1 M6×16	2
17	10000431	Valve cover	1
18	00002998	Plug SAE4	1
19	00003027	Orifice $\Phi$ 1.5	1
20	10000462	Nut	1
21	10000464	Fitting	1
22	00002519	Washer BS/A 13.74	2
23	10000465	Fitting	1
24	00003350	Seal kit	1

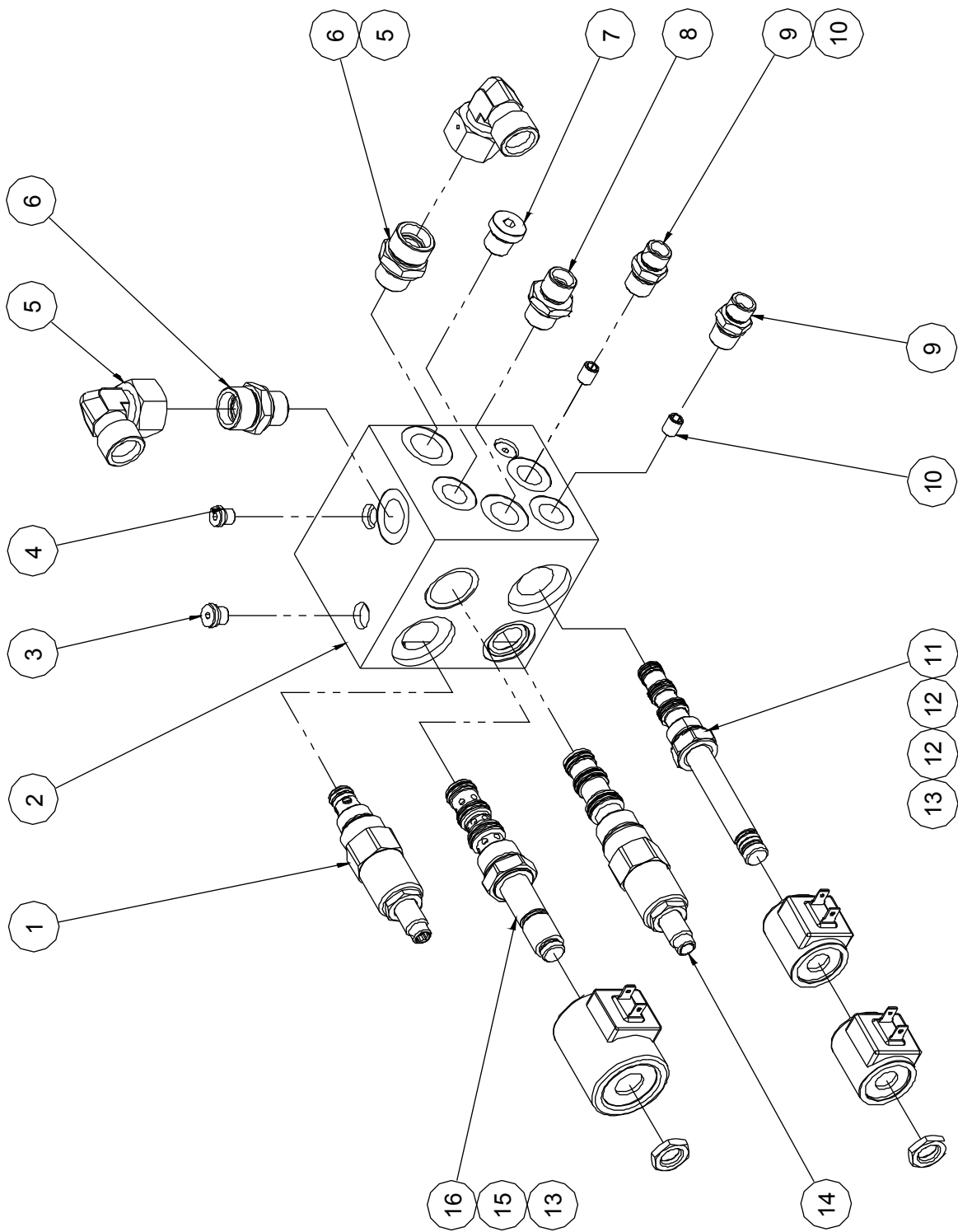
402.1 Function manifold (S06-EH)



**402.1 Function manifold (S06-EH)**

Item	Part No.	Description	Qty.
1	00003017	Nut	4
2	00003019	Coil	4
3	00003003	Solenoid valve spool	1
4	00002999	Plug SAE2	21
5	00001835	Elbow	2
6	00001264	Straight fitting	2
7	00002998	Plug SAE4	2
8	00001073	Plug VST114×1.5ED	1
9	00003016	Valve body	1
10	00001291	Straight fitting	5
11	00001282	Straight fitting	3
12	00003000	Orifice $\Phi$ 1.0	2
13	00002997	Plug SAE3	2
14	00003014	Orifice $\Phi$ 1.1	1
15	10000404	Check valve	2
16	00003013	Check valve	1
17	00003011	Solenoid valve spool	1
18	00003010	Solenoid valve spool	1
19	00003008	Relief valve	1
20	00003009	Relief valve	1
21	00003018	Coil	2
22	00003004	Solenoid valve spool	1
23	00003012	Flow control valve	1
24	00003001	Relief valve	1
25	00003007	Relief valve	1

403.1 Function manifold (S06-E)

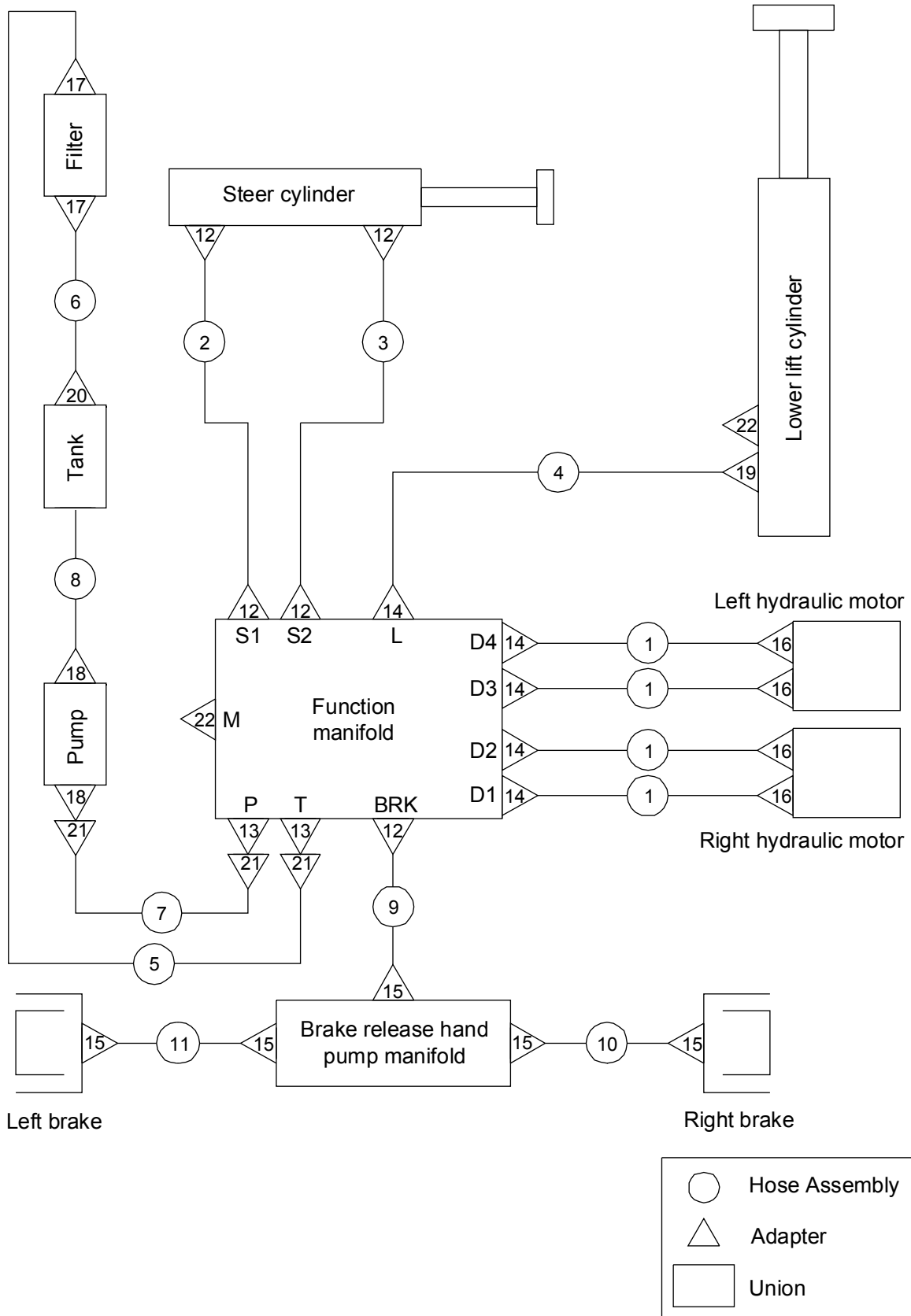




**403.1 Function manifold (S06-E)**

Item	Part No.	Description	Qty.
1	00003001	Relief valve	1
2	00000531	Valve body	1
3	00002997	Plug SAE3	3
4	00002999	Plug SAE2	9
5	00001835	Elbow	2
6	00001264	Straight fitting	2
7	00001073	Plug VST114×1.5ED	1
8	00001291	Straight fitting	1
9	00001282	Straight fitting	2
10	00003000	Orifice $\Phi 1.0$	2
11	00003004	Solenoid valve spool	1
12	00003018	Coil	2
13	00003017	Nut	2
14	00003002	Steer priority flow control	1
15	00003019	Coil	1
16	00003003	Solenoid valve spool	1

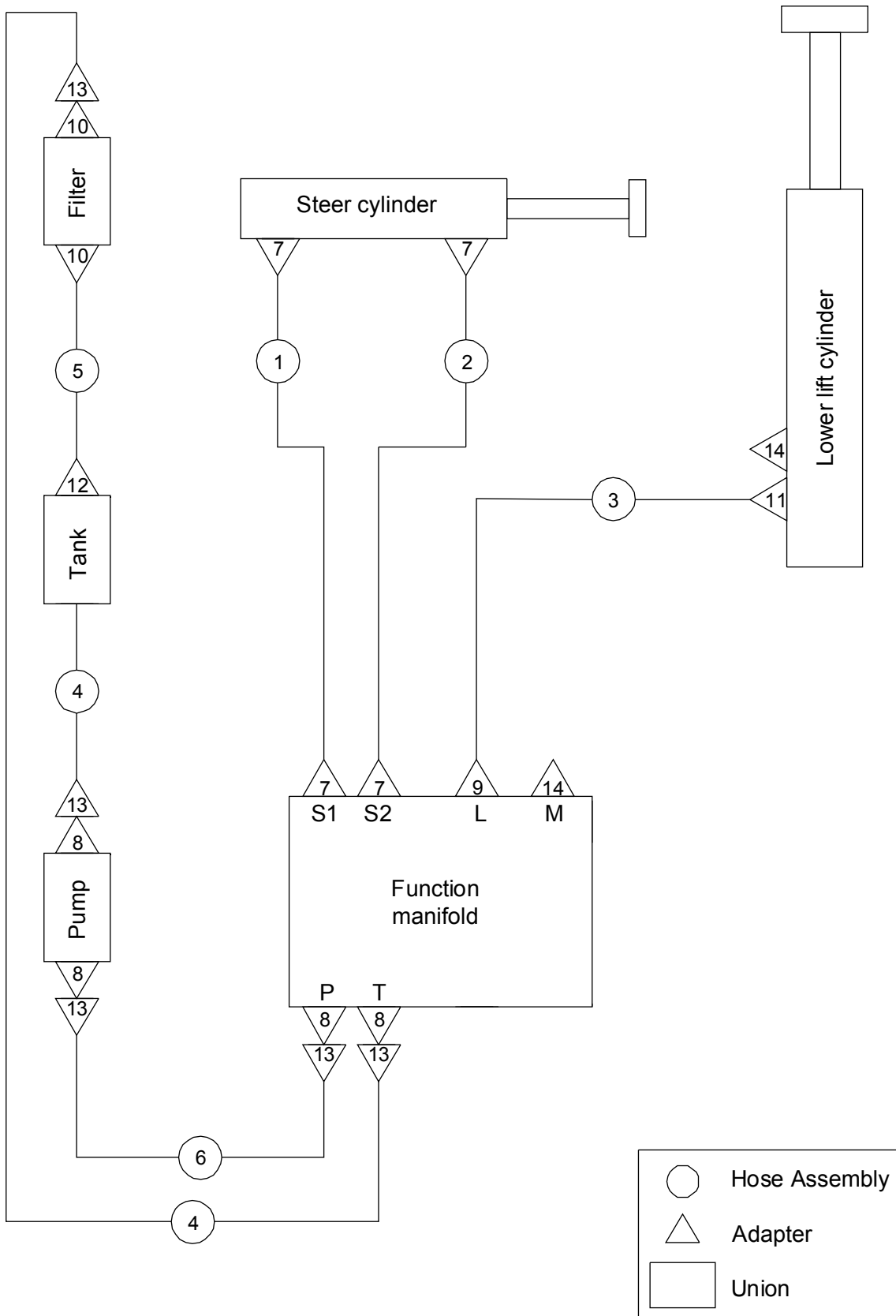
404.1 Hydraulic Hoses and Fittings (S06-EH)



**404.1 Hydraulic Hoses and Fittings (S06-EH)**

Item	Part No.	Description	Qty.
1	00002303	Hose assembly	4
2	00002298	Hose assembly	1
3	00002299	Hose assembly	1
4	00002304	Hose assembly	1
5	00002305	Hose assembly	1
6	00002307	Hose assembly	1
7	00002308	Hose assembly	1
8	00002306	Hose assembly	1
9	00002300	Hose assembly	1
10	00002301	Hose assembly	1
11	00002302	Hose assembly	1
12	00001282	Straight fitting	5
13	00001264	Straight fitting	2
14	00001291	Straight fitting	5
15	00001769	Straight fitting	5
16	00002072	Straight fitting	4
17	00001508	Straight fitting	2
18	00001776	Straight fitting	2
19	00001292	Straight fitting	1
20	10000466	Fitting	1
21	00001835	Elbow	3
22	00001073	Plug VST114×1.5ED	2

405.1 Hydraulic Hoses and Fittings (S06-E)

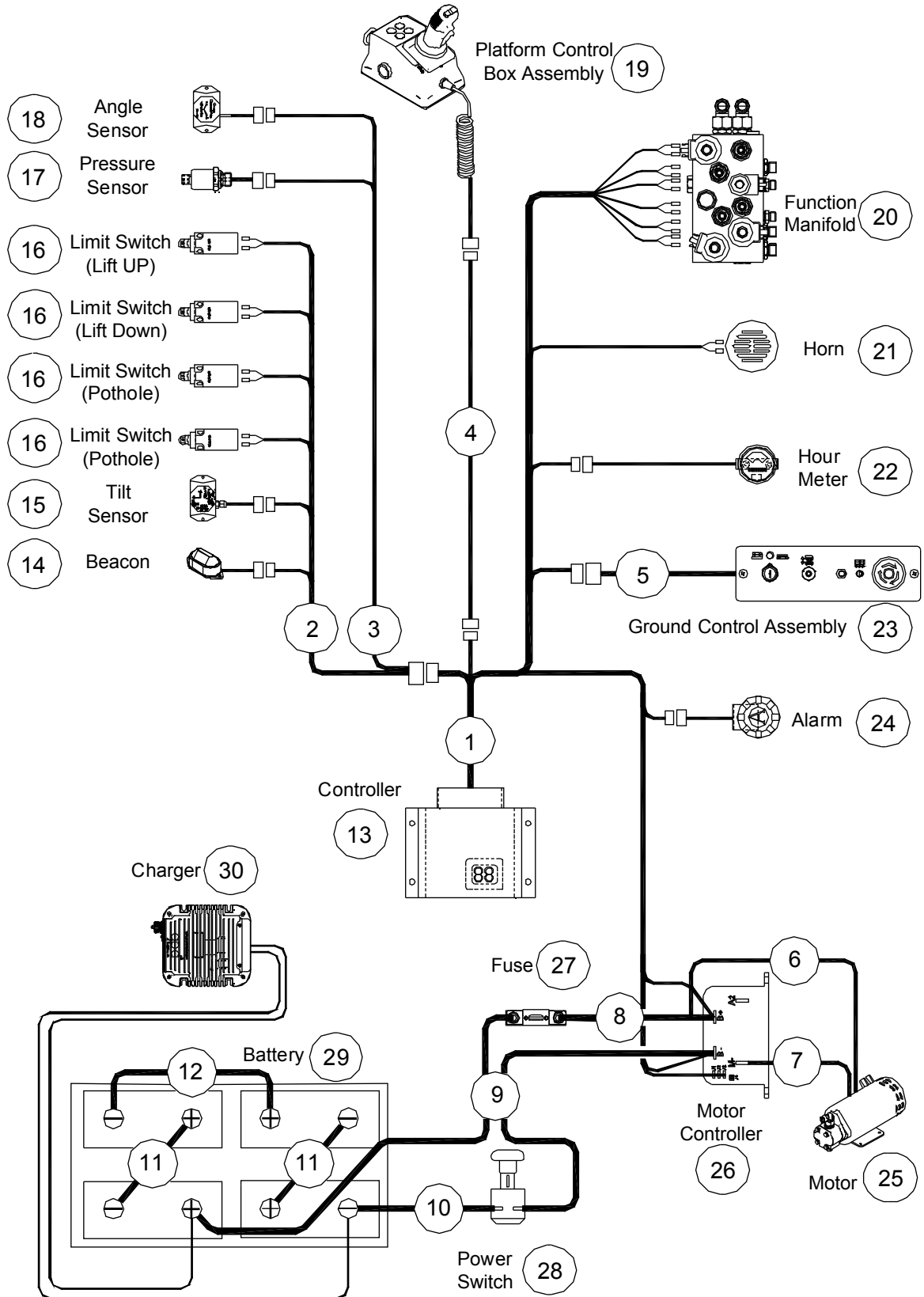


**405.1 Hydraulic Hoses and Fittings (S06-E)**

Item	Part No.	Description	Qty.
1	00002298	Hose assembly	1
2	00002299	Hose assembly	1
3	00002304	Hose assembly	1
4	00002310	Hose assembly	2
5	00002309	Hose assembly	1
6	00002311	Hose assembly	1
7	00001282	Straight fitting	4
8	00001264	Straight fitting	4
9	00001291	Straight fitting	1
10	00001508	Straight fitting	2
11	00001292	Straight fitting	1
12	10000466	Fitting	1
13	00001835	Elbow	5
14	00001073	Plug VST114×1.5ED	2

# **Section 5 Electrical System**

501.1 Electrical Harness (S06-EH)



**501.1 Electrical Harness (S06-EH)**

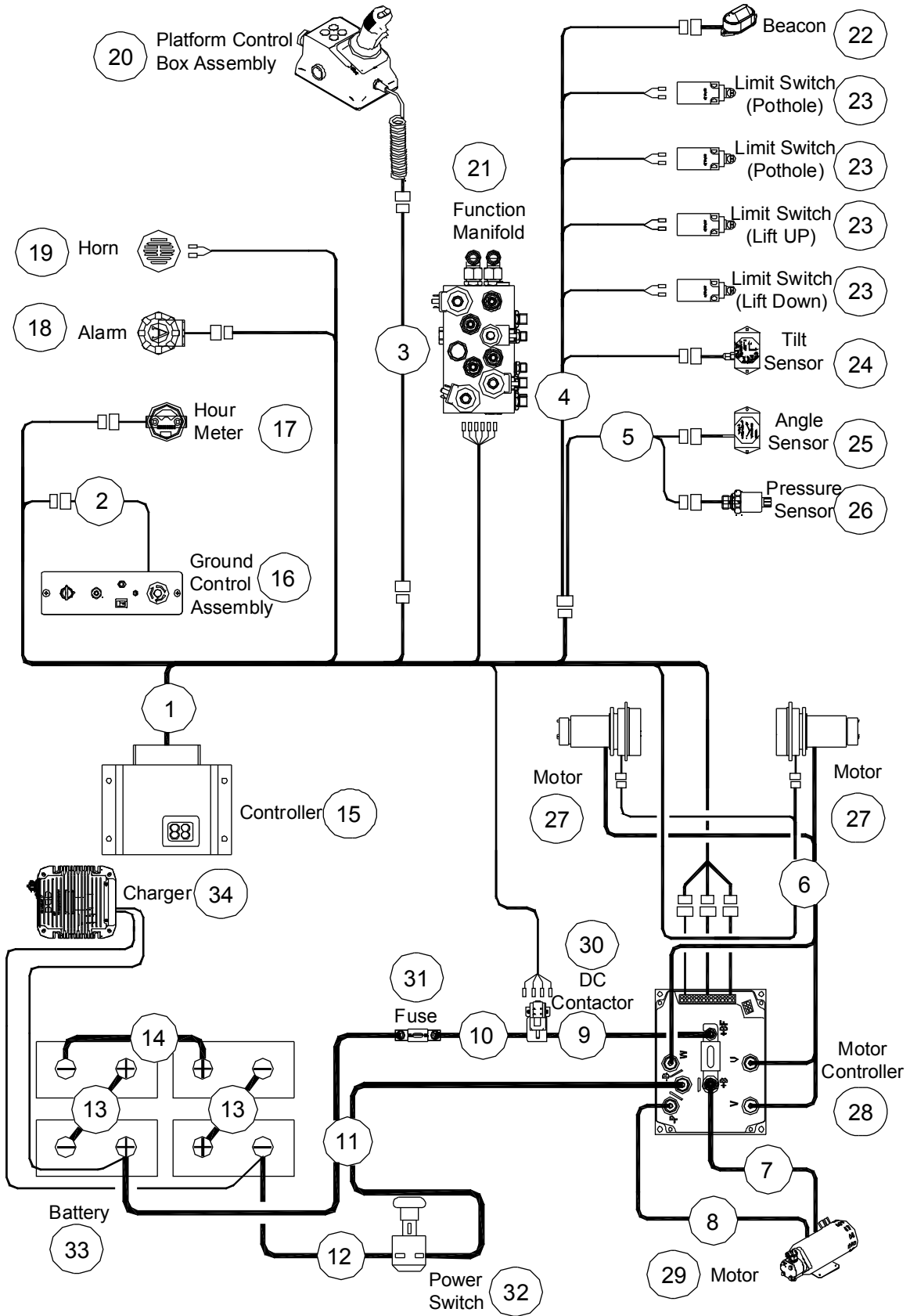
Item	Part No.	Description	Qty.
1	00002670	ECU harness	1
2	00002695	Limit switch harness	1
3	00002702	Angle & pressure sensor harness	1
4	00002698	Platform control box harness	1
5	00002169	Ground control panel harness	1
6	00002682	Pump motor positive harness	1
7	00002686	Pump motor negative harness	1
8	00002677	Motor controller harness	1
9	00002666	Battery positive harness	1
10	00002658	Battery negative harness	1
11	00002656	Battery harness 1	2
12	00002657	Battery harness 2	1
13		Controller (refer to 105.1)	1
14		Beacon (refer to 112.1)	1
15		Tilt sensor (refer to 112.1)	1
16		Limit switch (refer to 103.1, 112.1)	4
17		Pressure sensor (refer to 401.1)	1
18		Angle sensor (refer to 201.1)	1
19		Platform control box assembly (refer to 304.1)	1
20		Function manifold (refer to 402.1)	1
21		Horn (refer to 105.1)	1
22		Hour meter (refer to 105.1)	1
23		Ground control assembly (refer to 113.1)	1
24		Alarm (refer to 105.1)	1
25		Motor (refer to 105.1)	1
26		Motor controller (refer to 105.1)	1
27		250A Fuse (refer to 105.1)	1
28		Power switch (refer to 104.1)	1
29		Battery (refer to 104.1)	4



**501.1 Electrical Harness (S06-EH)**

Item	Part No.	Description	Qty.
30		Charger (refer to 111.1)	1

502.1 Electrical Harness (S06-E)



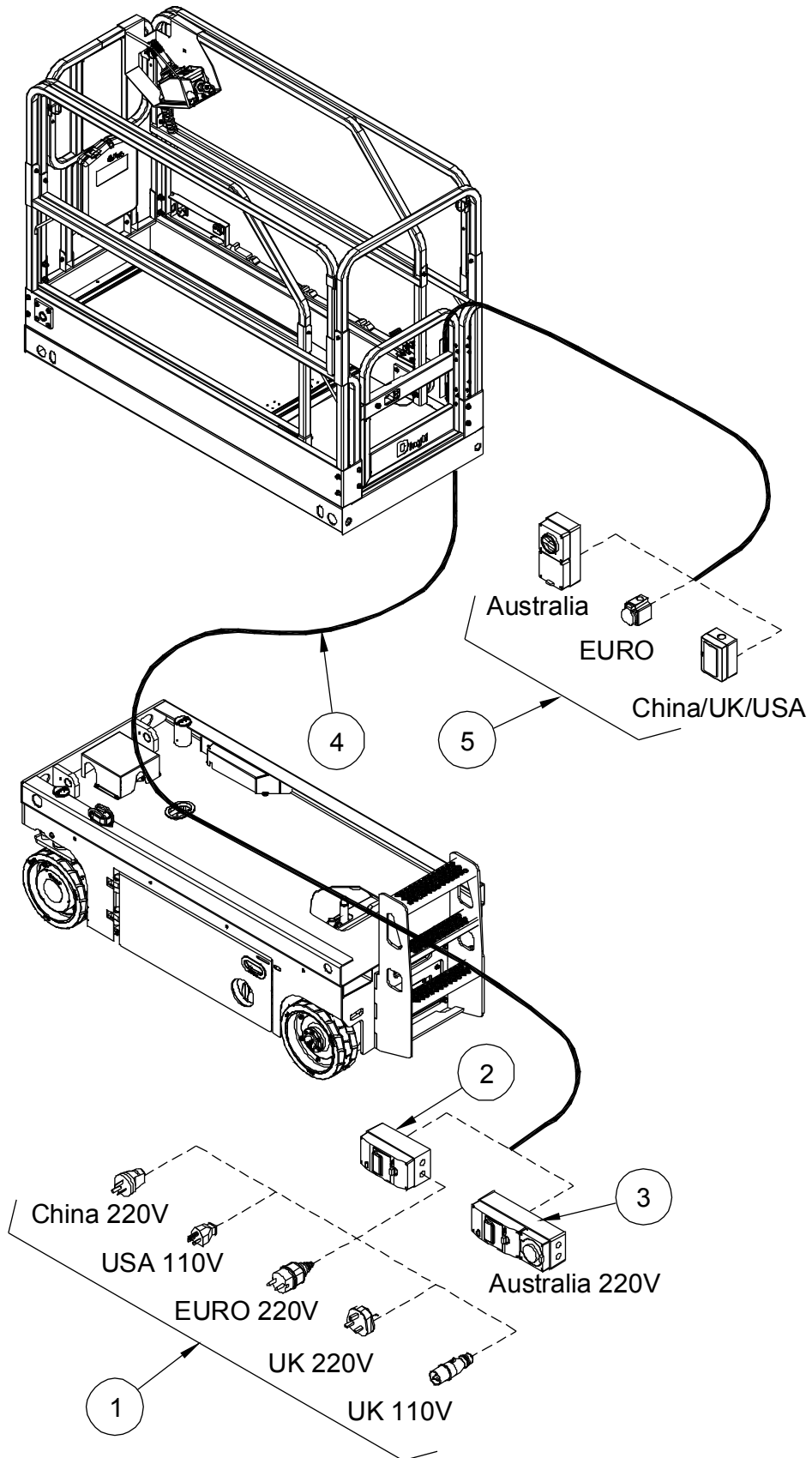
**502.1 Electrical Harness (S06-E)**

Item	Part No.	Description	Qty.
1	00002669	ECU harness	1
2	00002672	Ground control panel harness	1
3	00002698	Platform control box harness	1
4	00002694	Limit switch harness	1
5	00002702	Angle & pressure sensor harness	1
6	00003688	Drive motor harness	1
7	00002681	Pump motor positive harness	1
8	00002685	Pump motor negative harness	1
9	00002675	Motor controller harness	1
10	00002676	DC contactor harness	1
11	00002665	Battery positive harness	1
12	00002658	Battery negative harness	1
13	00002656	Battery harness 1	2
14	00002657	Battery harness 2	1
15		Controller (refer to 106.1)	1
16		Ground control assembly (refer to 114.1)	1
17		Hour meter (refer to 106.1)	1
18		Alarm (refer to 106.1)	1
19		Horn (refer to 106.1)	1
20		Platform control box assembly (refer to 304.1)	1
21		Function manifold (refer to 403.1)	1
22		Beacon (refer to 112.1)	1
23		Limit switch (refer to 103.1, 112.1)	4
24		Tilt sensor (refer to 112.1)	1
25		Angle sensor (refer to 201.1)	1
26		Pressure sensor (refer to 401.1)	1
27		Motor (refer to 102.1)	2
28		Motor controller (refer to 108.1)	1
29		Motor (refer to 106.1)	1

**502.1 Electrical Harness (S06-E)**

Item	Part No.	Description	Qty.
30		DC Contactor (refer to 108.1)	1
31		250A Fuse (refer to 108.1)	1
32		Power switch (refer to 104.1)	1
33		Battery (refer to 104.1)	4
34		Charger (refer to 111.1)	1

### 503.1 Power to Platform

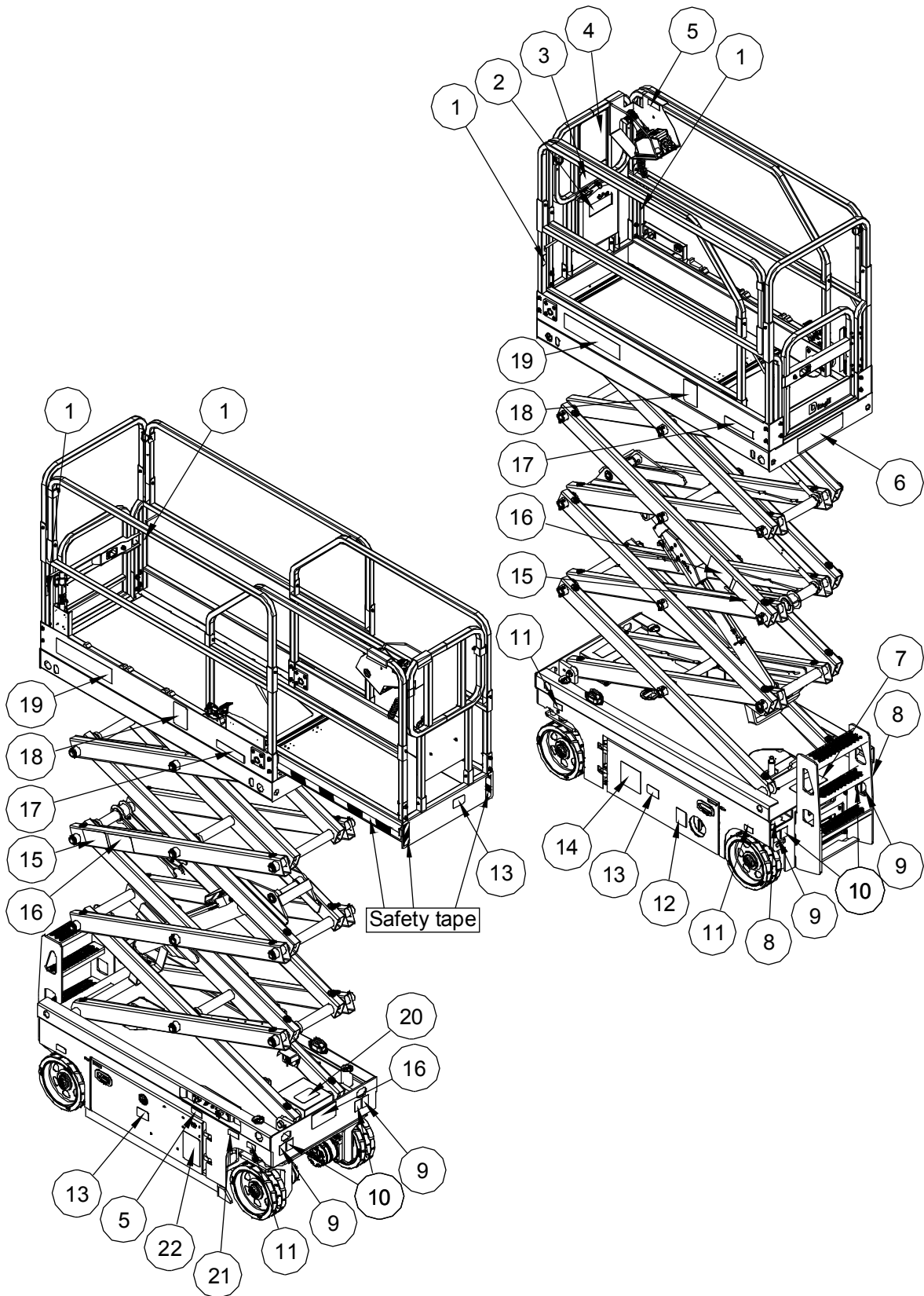


**503.1 Power to Platform**

Item	Part No.	Description	Qty.
1	00003148	AC plug (China 220V)	1
	00003149	AC plug (USA 110V)	1
	00003151	AC plug (European 220V)	1
	00003150	AC plug (UK 220V)	1
	00002615	AC plug (UK 110V)	1
2	00002634	Circuit breaker (Option)	1
3	00003147	AC plug (Australia 220V)	1
4	00003961	Wire cable, platform AC power	1
5	00002617	AC socket (Australia)	1
	00002709	AC socket (European)	1
	00000668	AC socket (China/UK/USA)	1

# Section 6 Decal

601.1 Decal





**601.1 Decal**

Item	Part No.	Description	Qty.
1	09440011	Decal, Label-Lanyard anchorage point	4
2	09340001	Decal, Notice-Keep the manual with the machine	1
3	09440003	Decal, Danger-Tip-over hazard, tilt-alarm	1
4	09440001	Decal, Danger-General safety rules	1
5	09340003	Decal, Instructions-Refer the operator to the instructions for use	2
6	09440070	Decal, Label-Capacity 230kg	1
7	09210015	Nameplate, Manufacturer serial number	1
8	09310001	Decal, Instructions-Forklift pockets	2
9	09310003	Decal, Instructions-Tie down point	4
10	09310002	Decal, Instructions-Lift point	4
11	09310061	Decal, Instructions-Maximum wheel load 670kg	4
12	09310064	Decal, Notice-Main power switch operation	1
13	09540001	Decal, Label-CE	3
14	09410001	Decal, Danger-Explosion/burn hazard	1
15	09430001	Decal, Danger-Safety arm	2
16	09430003	Decal, Danger-Keep away from moving parts	3
17	09640066	Decal, Cosmetic-S06-EH (S06-EH)	2
	09640067	Decal, Cosmetic-S06-E (S06-E)	2
18	09440009	Decal, Caution-Max. manual force 400N (Indoor) 200N (Outdoor)	2
19	09940003	Decal, Label-E-Tech (S06-E)	2
	09940004	Decal, Label-Summit (S06-EH)	2
20	09410005	Decal, Danger-Do not alter or disable limit switch	1
21	09310004	Decal, Instructions-Emergency lower	1
22	09410003	Decal, Warning-Inspected and operation properly	1

