

MOBILE SCISSOR LIFTS

PARTS MANUAL

(For SP039-E)



WARNING

THE MANUFACTURER SHALL NOT BE HELD LIABLE IN CASE OF FAULTS OR ACCIDENTS DUE TO NEGLIGENCE, INCAPACITY, INSTALLATION BY UNQUALIFIED TECHNICIANS AND IMPROPER USE OF THE MACHINE

DO NOT OPERATE THIS MACHINE UNTIL YOU READ AND UNDERSTAND ALL THE DANGERS, WARNINGS AND CAUTIONS IN THIS MANUAL

Part Number: SM0117227A_Rev1.0



Zhejiang Dingli Machinery Co., Ltd.

First Edition, September 2018 Printing

Table of Contents

Section 1 Chassis

101.1	Battery Pack Module	2
102.1	Ground Control Assembly	5
103.1	Motor Controller Assembly	6
104.1	Hydraulic Power Unit.....	7
105.1	Front Wheel	8
106.1	Rear Wheel, Ladder and Accessories.....	10

Section 2 Scissor

201.1	Scissor Assembly	14
-------	------------------------	----

Section 3 Platform

301.1	Platform Assembly.....	18
-------	------------------------	----

Section 4 Hydraulic System

401.1	Lift Cylinder Assembly	22
402.1	Hydraulic Hoses and Fittings.....	24

Section 5 Electrical System

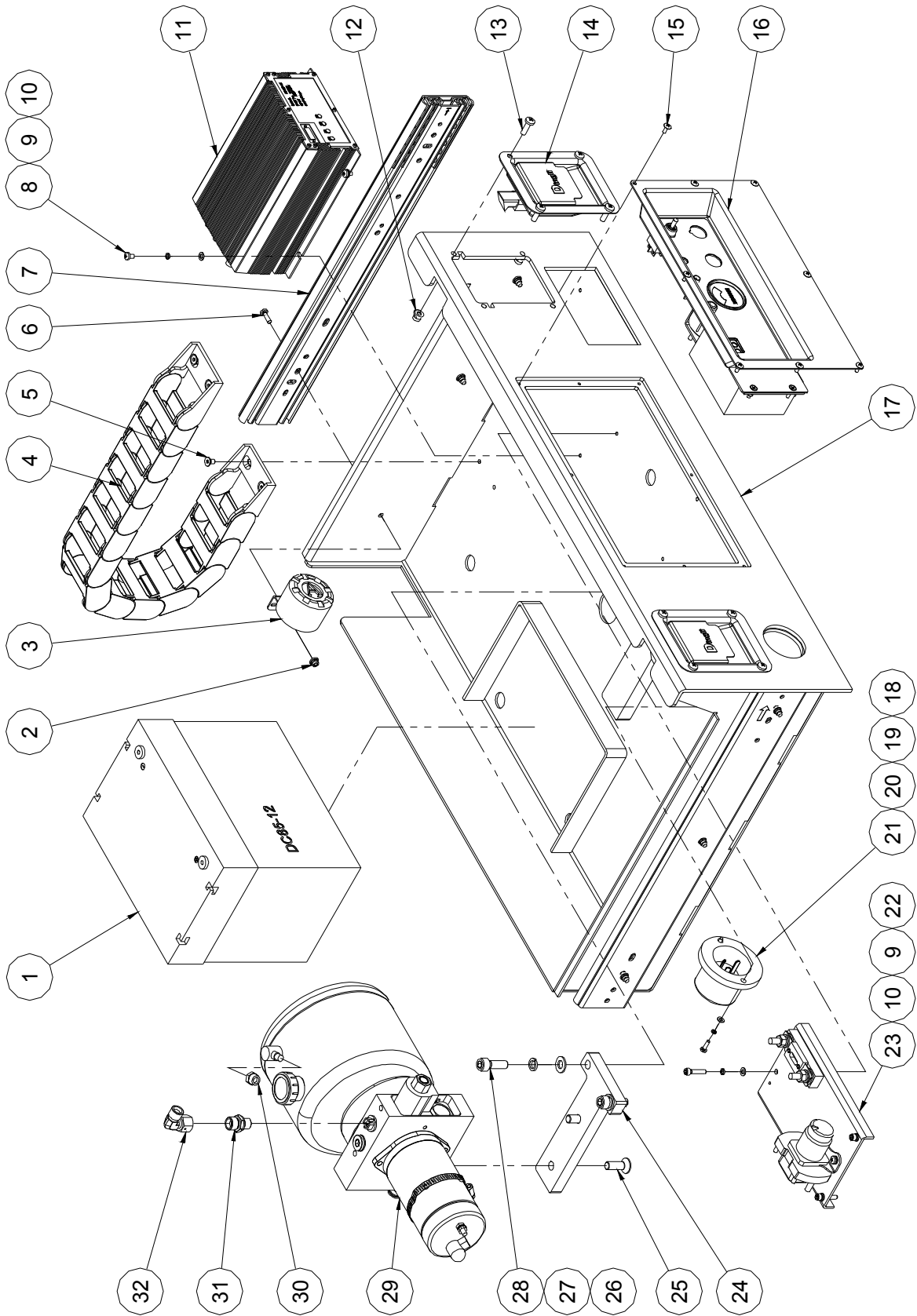
501.1	Electrical Harness.....	26
-------	-------------------------	----

Section 6 Decal

601.1	Decal.....	29
-------	------------	----

Section 1 Chassis

101.1 Battery Pack Module



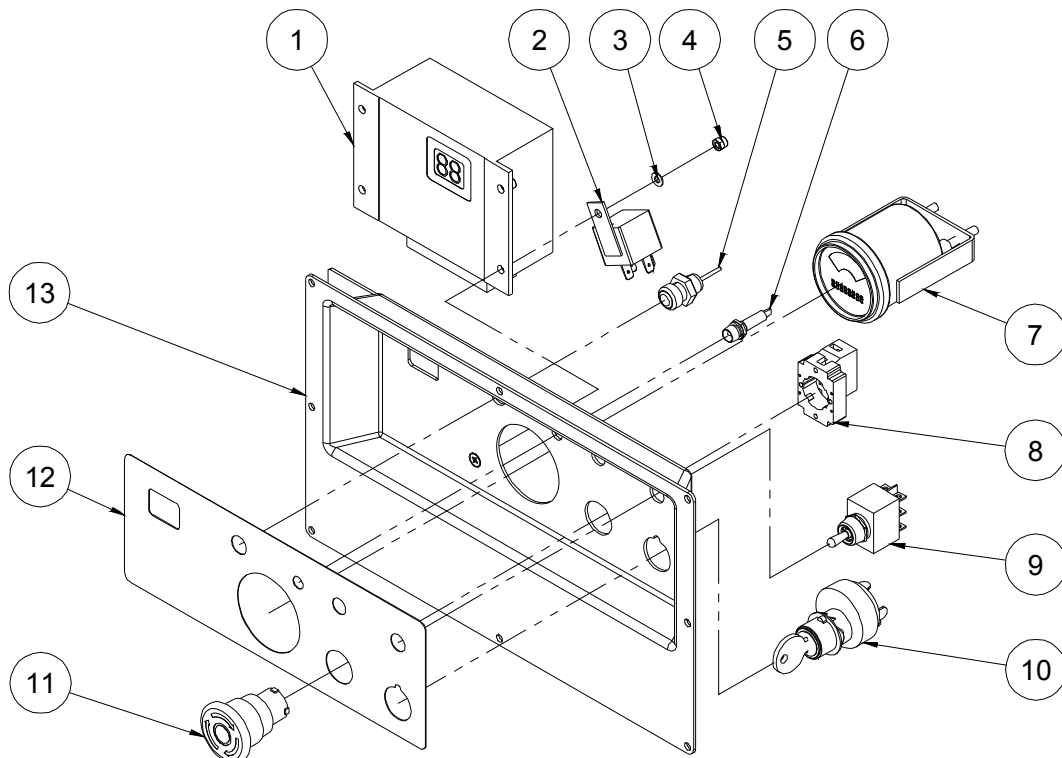
101.1 Battery Pack Module

Item	Part No.	Description	Qty.
1	00002350	Battery	1
2	00002573	Nut GB/T 6183.1 M5	12
3	00002384	Alarm	1
4	10001480	Towline	1
5	00000828	Screw GB/T 70.3 M6×10	4
6	00001250	Screw GB/T 818 M5×16 - H	12
7	10001498	Glide track	2
8	00002391	Screw GB/T 818 M5×8 - H	4
9	00000606	Washer GB/T 93 5	4
10	00000605	Washer GB/T 97.1 5	4
11	00002349	Charger	1
12	00002574	Nut GB/T 6183.1 M6	8
13	00001166	Screw GB/T 818 M6×20 - H	8
14	10001482	Latch	2
15	00001002	Screw GB/T 973 M4×10	8
16		Ground control assembly (refer to102.1)	1
17	10007303	Battery tray weldment	1
18	00000778	Washer GB/T 97.1 4	2
19	00000779	Washer GB/T 93 4	2
20	00002027	Screw GB/T 818 M4 x 14 - H	2
21	00002564	Plug	1
22	00001034	Screw GB/T 70.1 M5×25	3
23		Motor controller assembly (refer to103.1)	1
24	10001521	Bracket	1
25	00000847	Screw GB/T 70.3 M10×30	2
26	00000615	Washer GB/T 97.1 10	2
27	00000679	Washer GB/T 93 10	2
28	00001059	Screw GB/T 70.1 M10×30	2
29	00005097	Hydraulic power unit (refer to 104.1)	1

101.1 Battery Pack Module

Item	Part No.	Description	Qty.
30	10000462	Nut	1
31	00001318	Straight fitting	1
32	00001833	Elbow	1

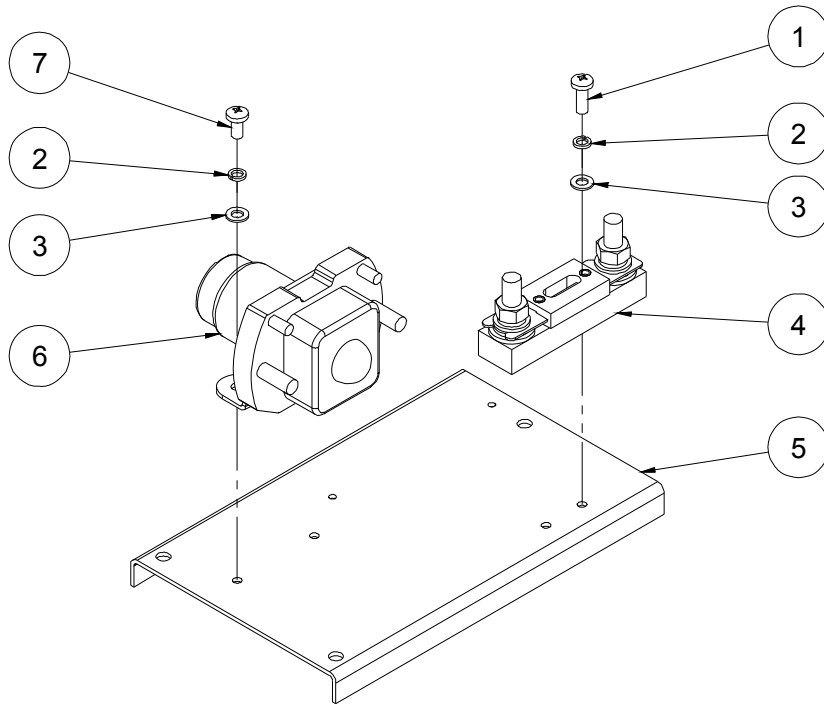
102.1 Ground Control Assembly



102.1 Ground Control Assembly

Item	Part No.	Description	Qty.
1	00005091	Controller	1
2	00002206	Relay	1
3	00000778	Washer GB/T 97.1 4	4
4	00001236	Nut GB/T 889.1 M4	4
5	00004799	Pushbutton switch	1
6	00000734	Indicator	1
7	00004428	Hour meter	1
8	00000752	Base with 1 NC contact	1
9	00000738	Toggle switch	1
10	00001243	Key switch	1
--	00003050	Key	1
11	00000754	Red mushroom head	1
12	09110025	Decal, Ground control panel	1
13	10005667	Ground control panel weldment	1

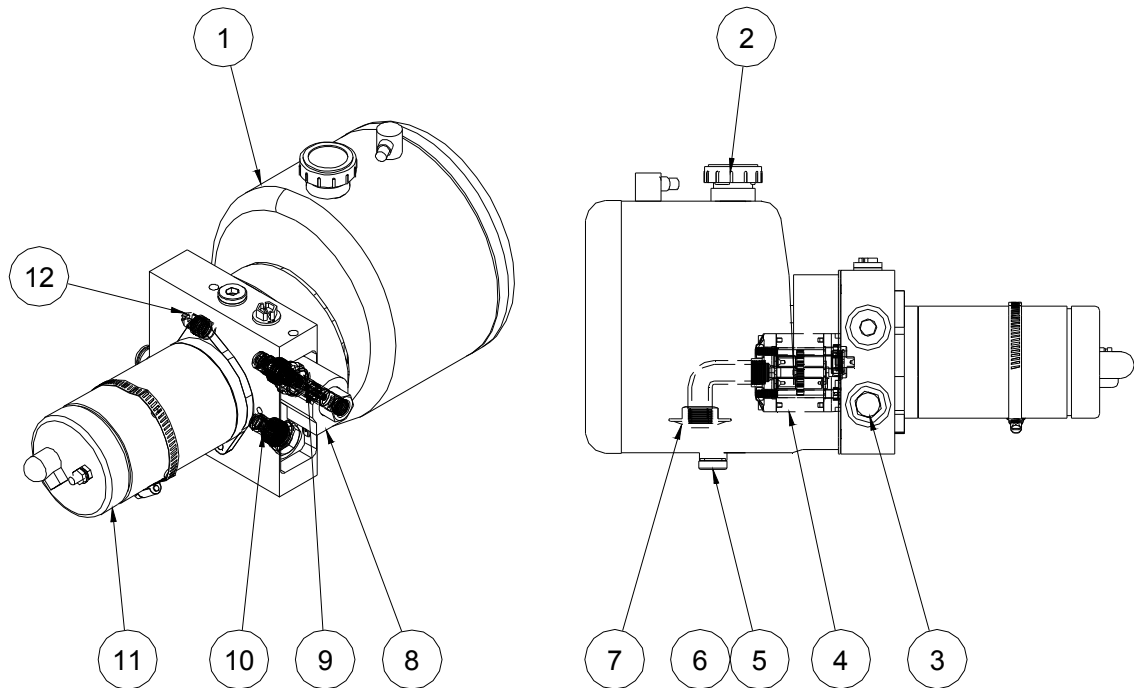
103.1 Motor Controller Assembly



103.1 Motor Controller Assembly

Item	Part No.	Description	Qty.
1	00002313	Screw GB/T 818 M5×14 - H	2
2	00000606	Washer GB/T 93 5	4
3	00000605	Washer GB/T 97.1 5	4
4	00002353	100A Fuse assembly	1
--	00002352	100A Fuse	1
--	00000757	Fuse seat	1
5	10001342	Mounting plate	1
6	00002205	DC Contactor	1
7	00002319	Screw GB/T 818 M5×10 - H	2

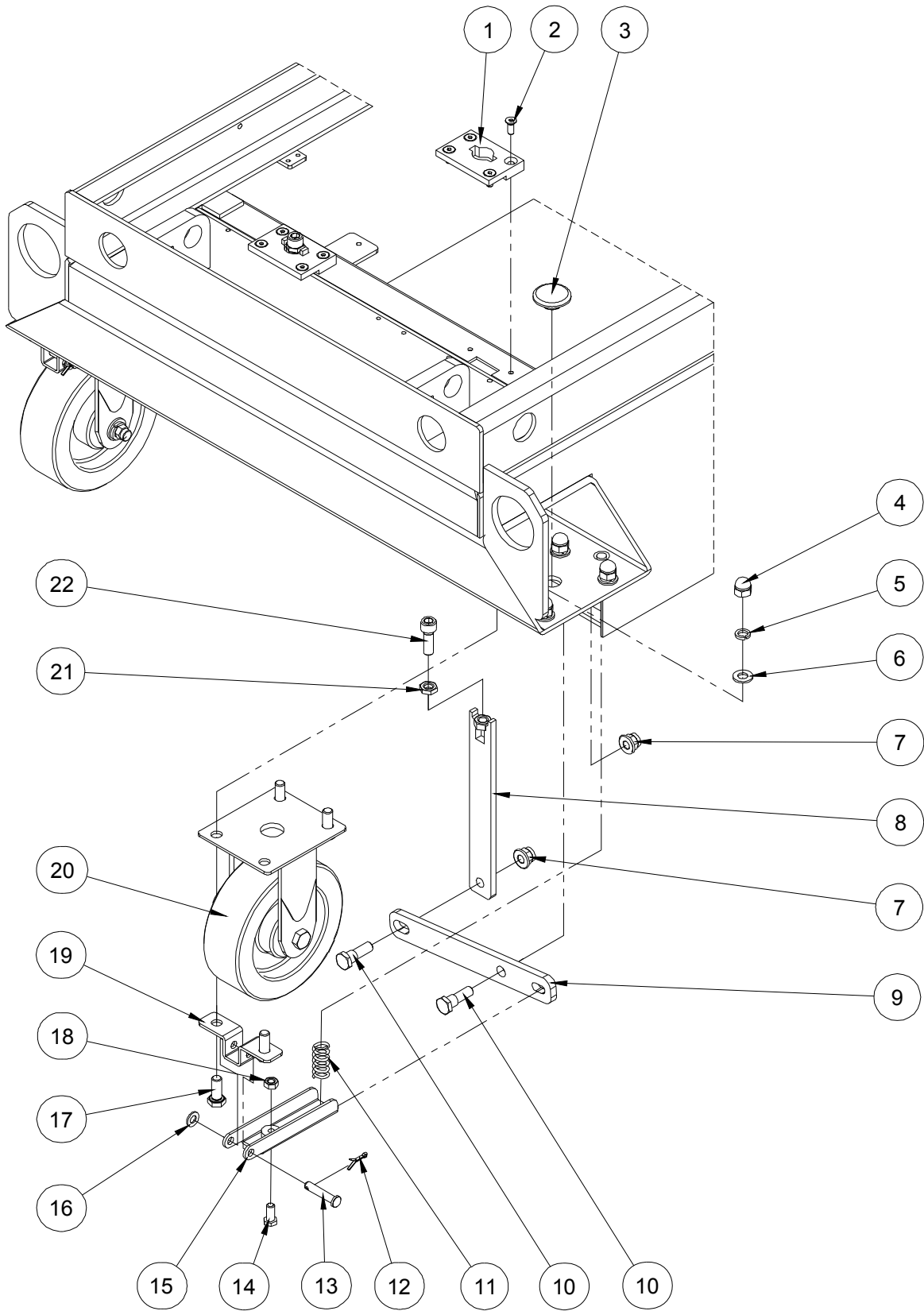
104.1 Hydraulic Power Unit



104.1 Hydraulic Power Unit

Item	Part No.	Description	Qty.
1	00002393	Tank	1
2	00003081	Tank cover	1
3	00003126	Relief valve	1
4	00003616	Pump	1
5	00003137	Plug	1
6	00001333	Washer JB/T 982 12	1
7	00003145	Filter web	1
8	00003132	Coil	1
9	00002395	Solenoid valve spool	1
10	00003282	Check valve	1
11	00002397	Motor	1
12	00003283	Pressure compensation valve	1

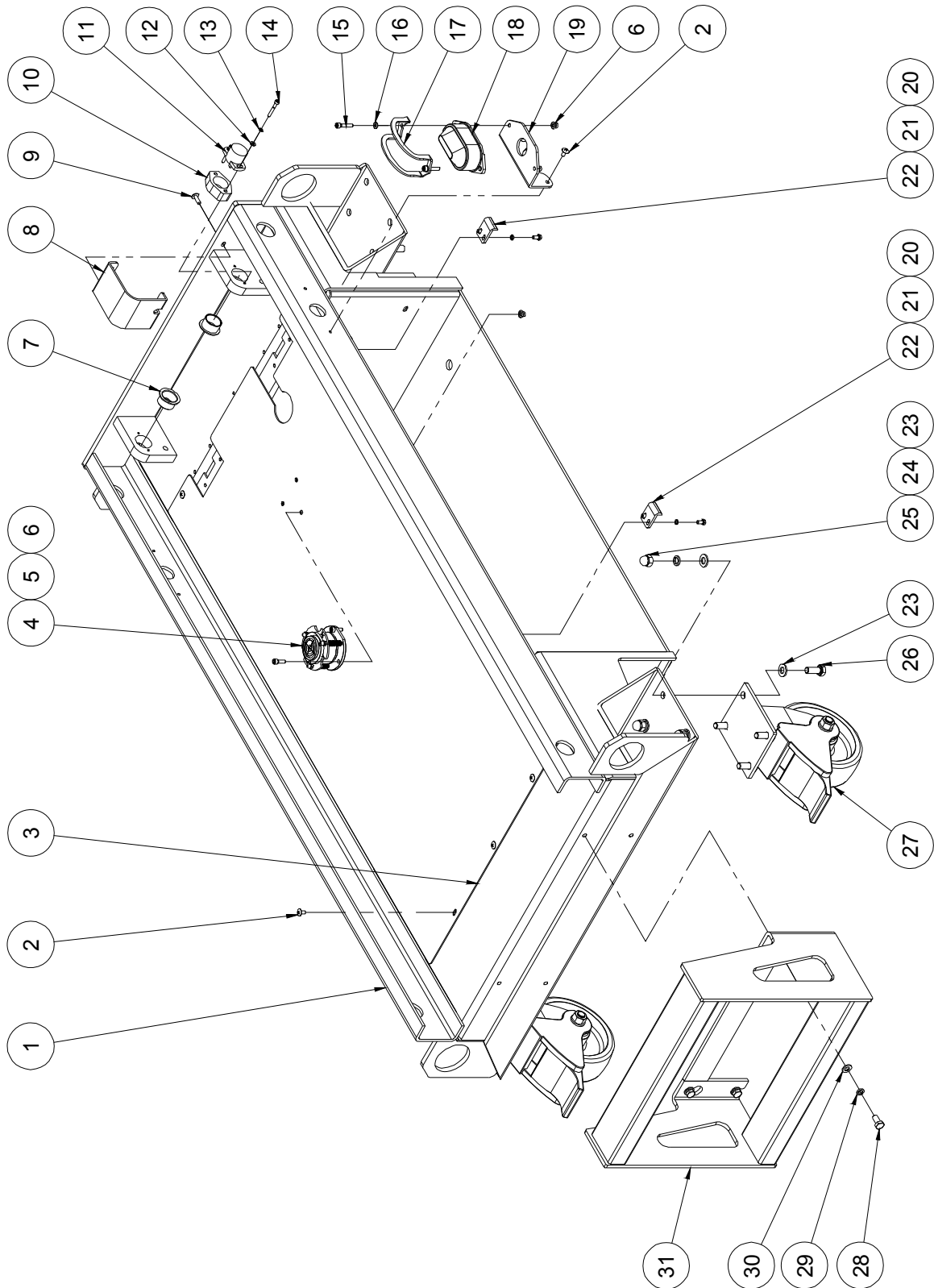
105.1 Front Wheel



105.1 Front Wheel

Item	Part No.	Description	Qty.
1	10001338	Guide block	2
2	00000830	Screw GB/T 70.3 M6×16	8
3	10006578	Block	2
4	00002403	Nut GB/T 923 M10	8
5	00000679	Washer GB/T 93 10	8
6	00000615	Washer GB/T 97.1 10	12
7	00002572	Nut GB/T 6183.1 M10	4
8	10001315	Pusher rod	2
9	10001313	Linkage rod	2
10	10001339	Pin	4
11	10001333	Spring	2
12	00002389	Cotter pin GB/T 91 3,2×18	2
13	00002388	Pin GB/T 882 B 8×40	2
14	10001337	Pin	2
15	10001330	Support	2
16	00000608	Washer GB/T 97.1 8	2
17	00000678	Bolt GB/T 5783 M10×25	8
18	00000610	Nut GB/T 6170 M8	2
19	10001329	Seat	2
20	10005780	Front wheel	2
--	10005781	Wheel support	1
--	10005784	Wheel	1
--	10005786	Spacer sleeve	2
21	00002386	Nut GB/T 6172.1 M10	2
22	00001059	Screw GB/T 70.1 M10×30	2

106.1 Rear Wheel, Ladder and Accessories



106.1 Rear Wheel, Ladder and Accessories

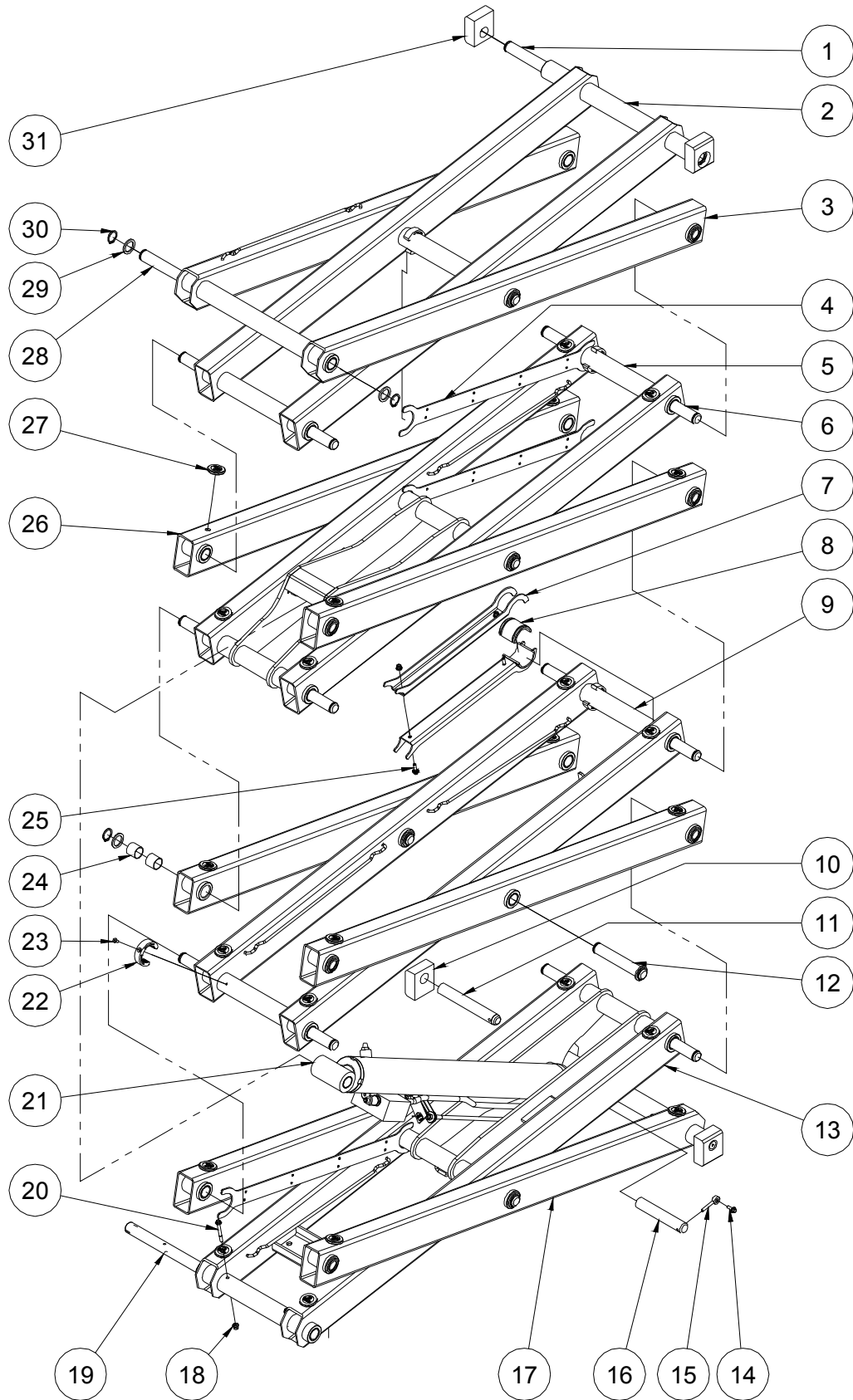
Item	Part No.	Description	Qty.
1	10005660	Frame weldment	1
2	00000999	Screw GB/T 973 M5×10	7
3	10005669	Cover	1
4	00000642	Tilt sensor	1
5	00001246	Screw GB/T 70.1 M5×16	3
6	00002573	Nut GB/T 6183.1 M5	5
7	00000229	8822-25165 Bearing	2
8	10001570	Sensor cover	1
9	00002523	Screw GB/T 973 M5×16	2
10	10001569	Sensor bracket	1
11	00000644	Rotary sensor	1
12	00000778	Washer GB/T 97.1 4	2
13	00000779	Washer GB/T 93 4	2
14	00002415	Screw GB/T 70.1 M4×30	2
15	00002484	Screw GB/T 70.1 M5×25	2
16	00000605	Washer GB/T 97.1 5	2
17	10000488	Beacon cover	1
18	00004814	Beacon	1
19	10001565	Beacon bracket	1
20	00002406	Bolt GB/T 5783 M5×10	4
21	00000606	Washer GB/T 93 5	4
22	10001328	Lock	2
23	00000615	Washer GB/T 97.1 10	16
24	00000679	Washer GB/T 93 10	8
25	00002403	Nut GB/T 923 M10	8
26	00000678	Bolt GB/T 5783 M10×25	8
27	10005787	Caster	2
--	10005788	Wheel support	1
--	10005784	Wheel	1

106.1 Rear Wheel, Ladder and Accessories

Item	Part No.	Description	Qty.
--	10005786	Spacer sleeve	2
--	10005790	Brake	1
28	00001063	Bolt GB/T 5783 M8×16	4
29	00000609	Washer GB/T 93 8	4
30	00000608	Washer GB/T 97.1 8	4
31	10001317	Ladder	1

Section 2 Scissor

201.1 Scissor Assembly



201.1 Scissor Assembly

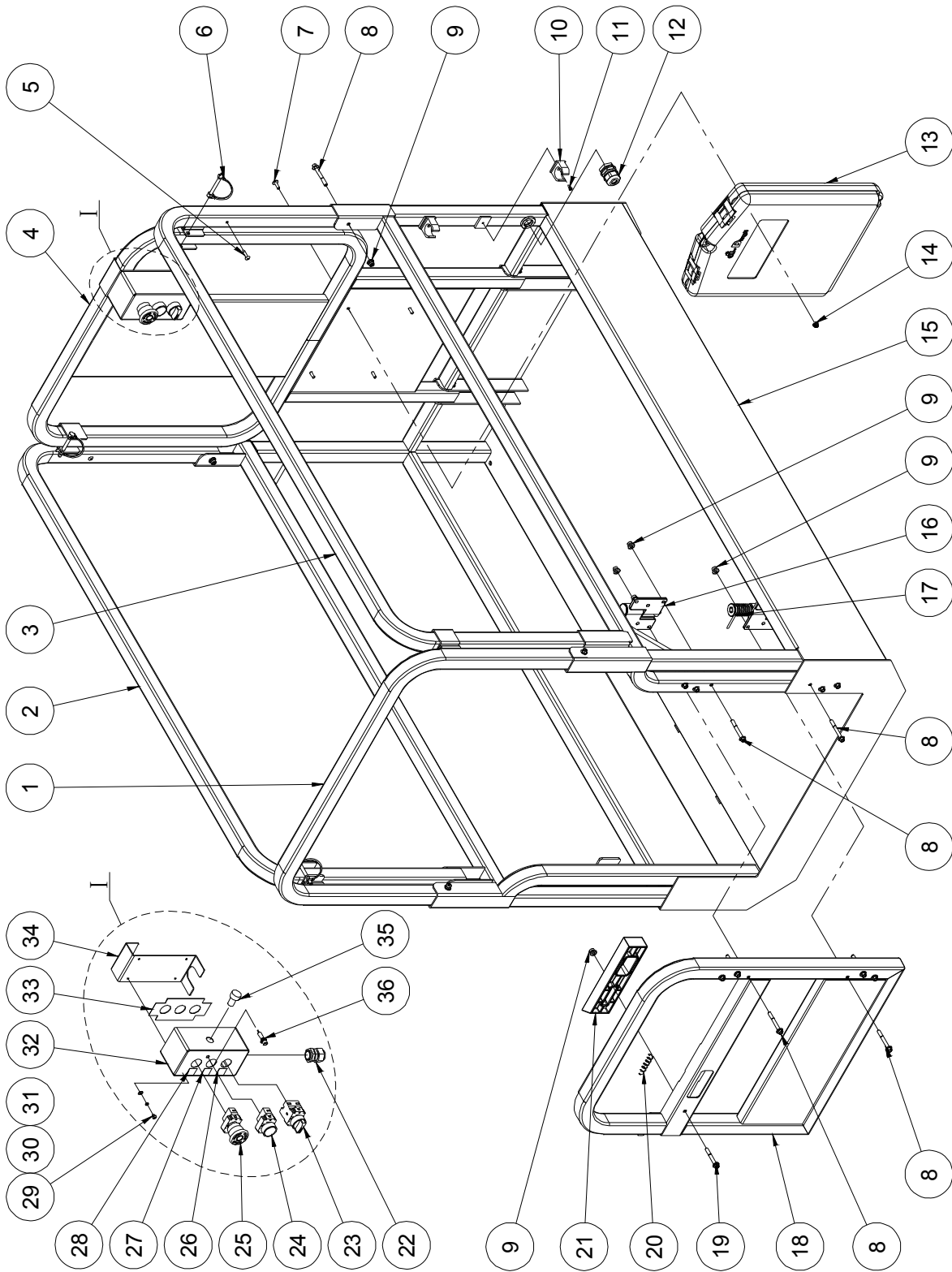
Item	Part No.	Description	Qty.
1	00000561	899-25502 Pin	1
2	10001430	Inner arm 4	1
3	10001419	Outer arm 3	1
4	10001406	Cable bridge	3
5	10001428	Inner arm 3	1
6	00000560	899-25468 Pin	9
7	10001402	Safety arm	2
8	10001403	Safety arm bushing	2
9	10001427	Inner arm 2	1
10	10001401	Chassis slider	2
11	00002334	896B-25×14 Pin	2
12	00000559	899-25136 Pin	2
13	10001422	Inner arm 1	1
14	00002864	Bolt QC/T 340 M6×16	2
15	00000217	8902-06045 Pin	2
16	00000584	895-25135 Pin	2
17	10001414	Outer arm 1	1
18	00002574	Nut GB/T 6183.1 M6	6
19	10001405	Pin	1
20	00002569	Bolt GB/T 16674 M6×55	4
21		Lift cylinder assembly (without seal kit) (refer to 401.1)	1
22	10001421	Collar	4
23	00000821	Screw GB/T 70.3 M5×12	4
24	00000369	8812-252825 Bearing	68
25	00002866	Bolt QC/T 340 M6×20	2
26	10001432	Outer arm 2	4
27	10000264	Block	24
28	00000562	899-25516 Pin	1
29	10001404	Washer	26

201.1 Scissor Assembly

Item	Part No.	Description	Qty.
30	00000781	Circlips JB/ZQ 4342-25	26
31	10001420	Platform slider	2

Section 3 Platform

301.1 Platform Assembly



301.1 Platform Assembly

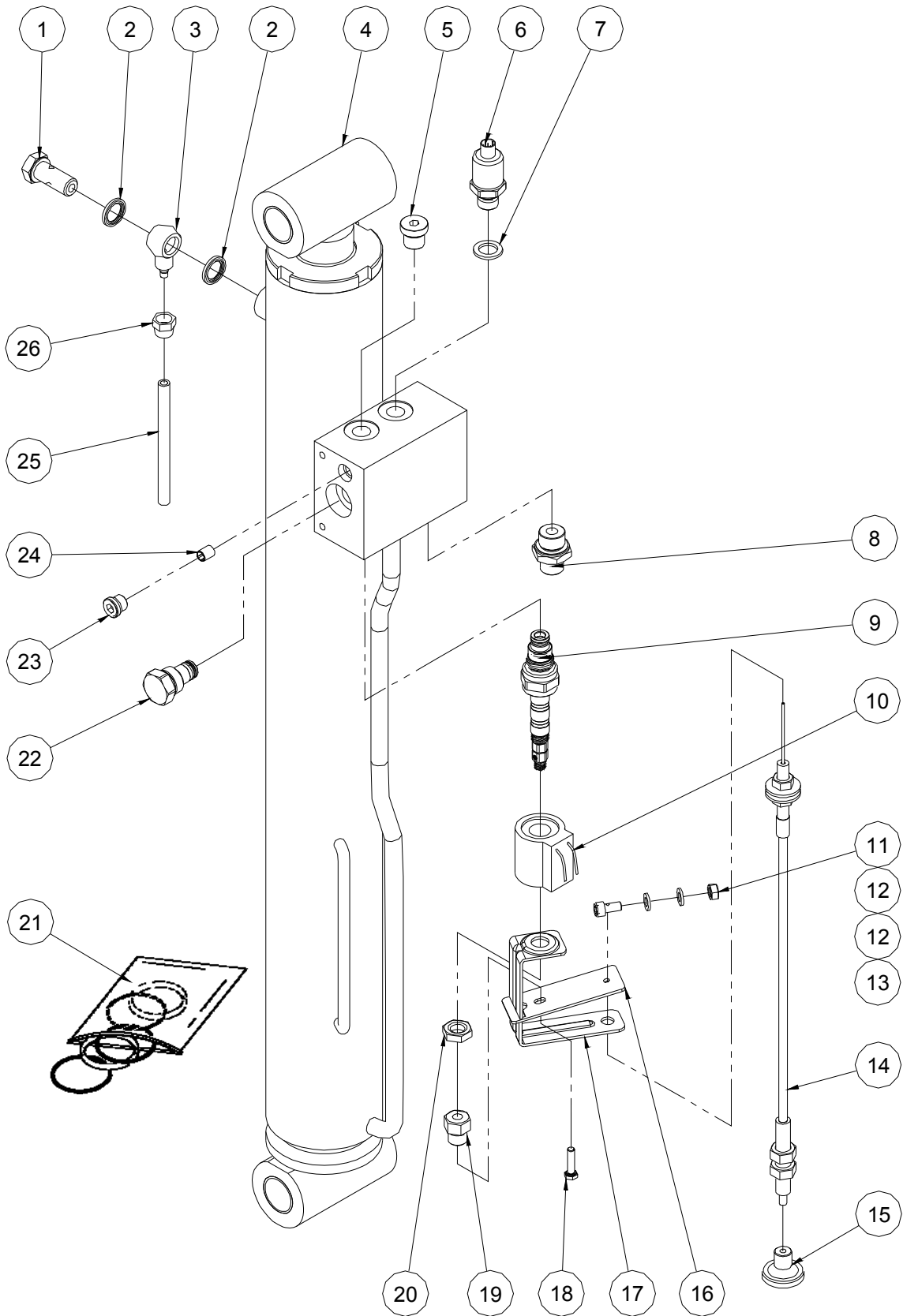
Item	Part No.	Description	Qty.
1	10001359	Rear rail	1
2	10001369	Left rail	1
3	10001371	Right rail	1
4	10001353	Front rail	1
5	00001991	Rivet GB/T 12618.4 4.8×16	4
6	10001178	Inserted pin	4
7	00002523	Screw GB/T 973 M5×16	4
8	00002581	Bolt GB/T 16674 M6×50	20
9	00002574	Nut GB/T 6183.1 M6	21
10	00001823	Clip 24	2
11	00004385	Screw GB/T 823 M4×8	2
12	00002316	Water-proof joint M24	1
13	50000555	Manual box	1
14	00002573	Nut GB/T 6183.1 M5	4
15	10005673	Main deck weldment	1
16	10000299	Hinge A	1
17	10000302	Hinge B	1
18	10001373	Entry gate	1
19	00002585	Bolt GB/T 16674 M6×45	1
20	10002379	Spring	1
21	10001255	Latch handle	1
22	00001828	Water-proof joint M20	1
23	00002344	Select switch	1
--	00002345	Select switch head	1
--	00002346	Base with 1 NO contact	1
24	00002341	Pushbutton switch	1
--	00002342	Pushbutton switch head	1
--	00002346	Base with 1 NO contact	1

301.1 Platform Assembly

Item	Part No.	Description	Qty.
25	00000921	Emergency stop switch	1
--	00000754	Red mushroom head	1
--	00000752	Base with 1 NC contact	1
26	09140015	Decal, Platform control panel	1
27	09140014	Decal, Platform control panel	1
28	09140013	Decal, Platform control panel	1
29	00002347	Screw GB/T 818 M4×5 - H	4
30	00000779	Washer GB/T 93 4	4
31	00000778	Washer GB/T 97.1 4	4
32	00005099	Platform control box	1
33	10001415	Support plate	1
34	10001412	Platform control box mount bracket	1
35	00005024	Alarm	1
36	00000734	Indicator	1

Section 4 Hydraulic System

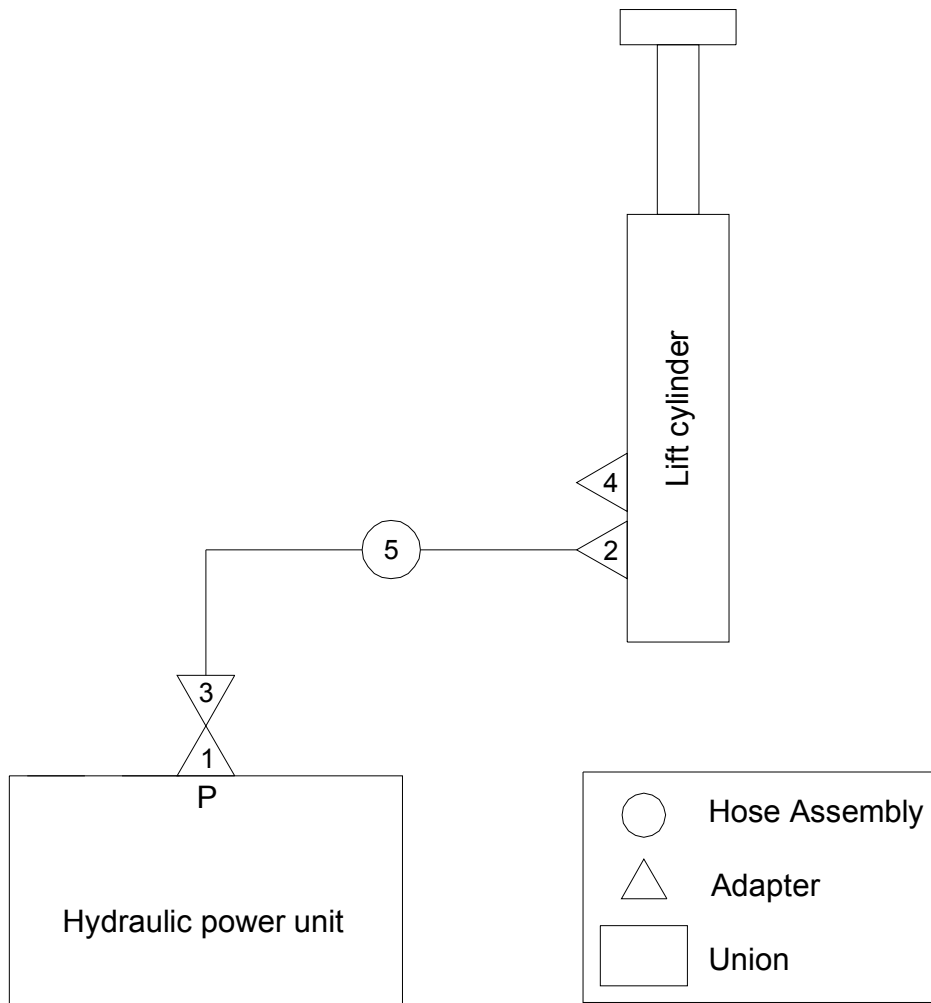
401.1 Lift Cylinder Assembly



401.1 Lift Cylinder Assembly

Item	Part No.	Description	Qty.
1	10000464	Fitting	1
2	00002519	Washer BS/A 13.74	2
3	10000465	Fitting	1
4	10001547	Lift cylinder	1
5	00001073	Plug VST114×1.5ED	1
6	00002418	Pressure sensor	1
7	00002518	Washer JB/T 982 13	1
8	00001292	Straight fitting	1
9	00003118	Solenoid valve spool	1
10	00003120	Coil	1
11	00002247	Nut GB/T 6170 M6	1
12	00000620	Washer GB/T 97.1 6	2
13	10001457	Screw	1
14	10002388	Emergency down cable assembly	1
15	10001458	Lowering knob	1
16	10001455	Plate	1
17	10001456	Support	1
18	00002268	Bolt GB/T 5783 M5×20	1
19	10001454	Cable connector	1
20	00003122	Nut GB/T 6172.1 M12	1
21	00003336	Seal kit	1
22	10000404	Check valve	1
23	00002998	Plug SAE4	1
24	00003027	Orifice Φ 1.5	1
25	10000459	Hose	1
26	10000462	Nut	1

402.1 Hydraulic Hoses and Fittings

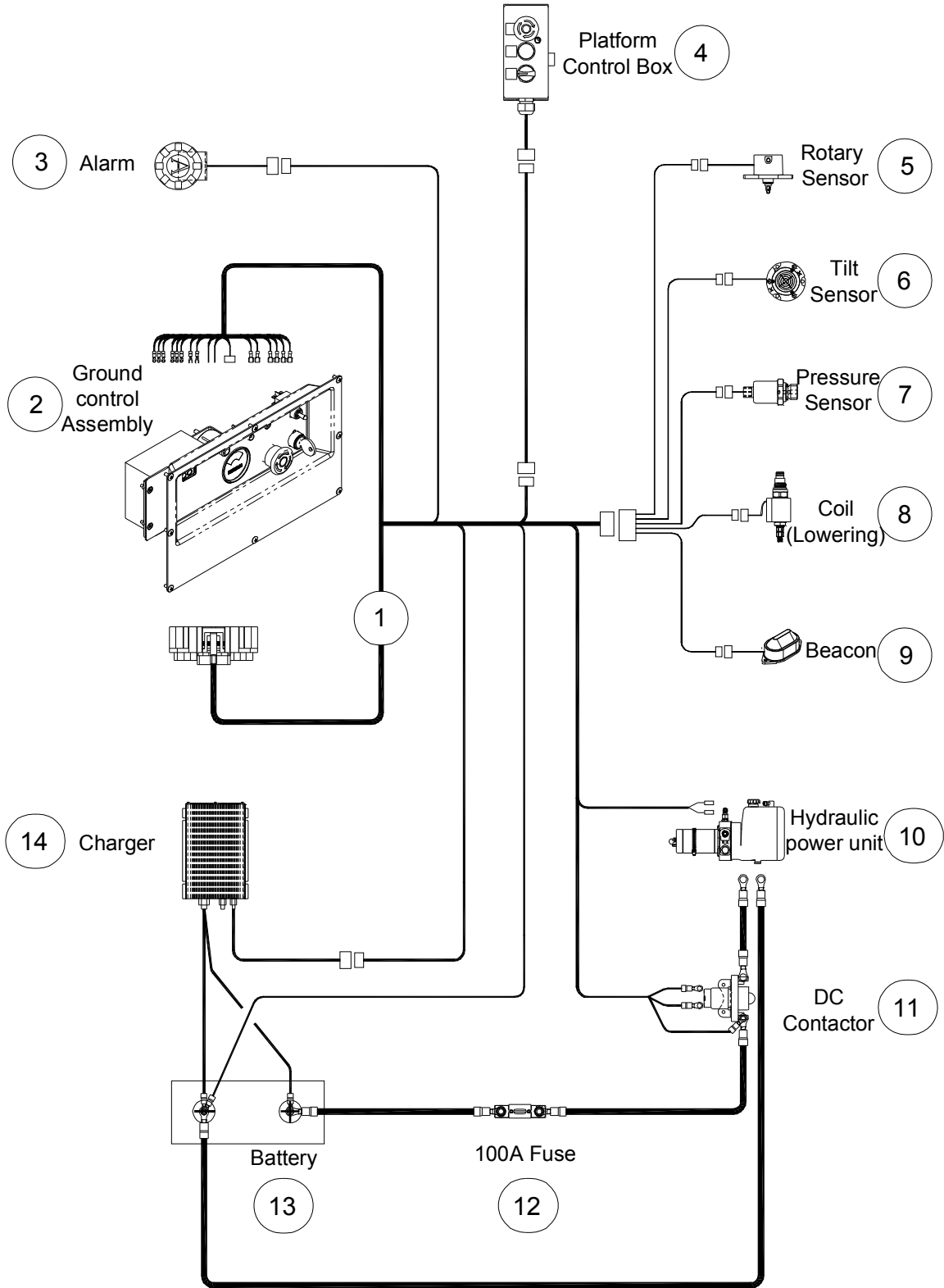


402.1 Hydraulic Hoses and Fittings

Item	Part No.	Description	Qty.
1	00001318	Straight fitting	1
2	00001292	Straight fitting	1
3	00001833	Elbow	1
4	00001073	Plug VST114×1.5ED	1
5	00002471	Hose assembly	1

Section 5 Electrical System

501.1 Electrical Harness

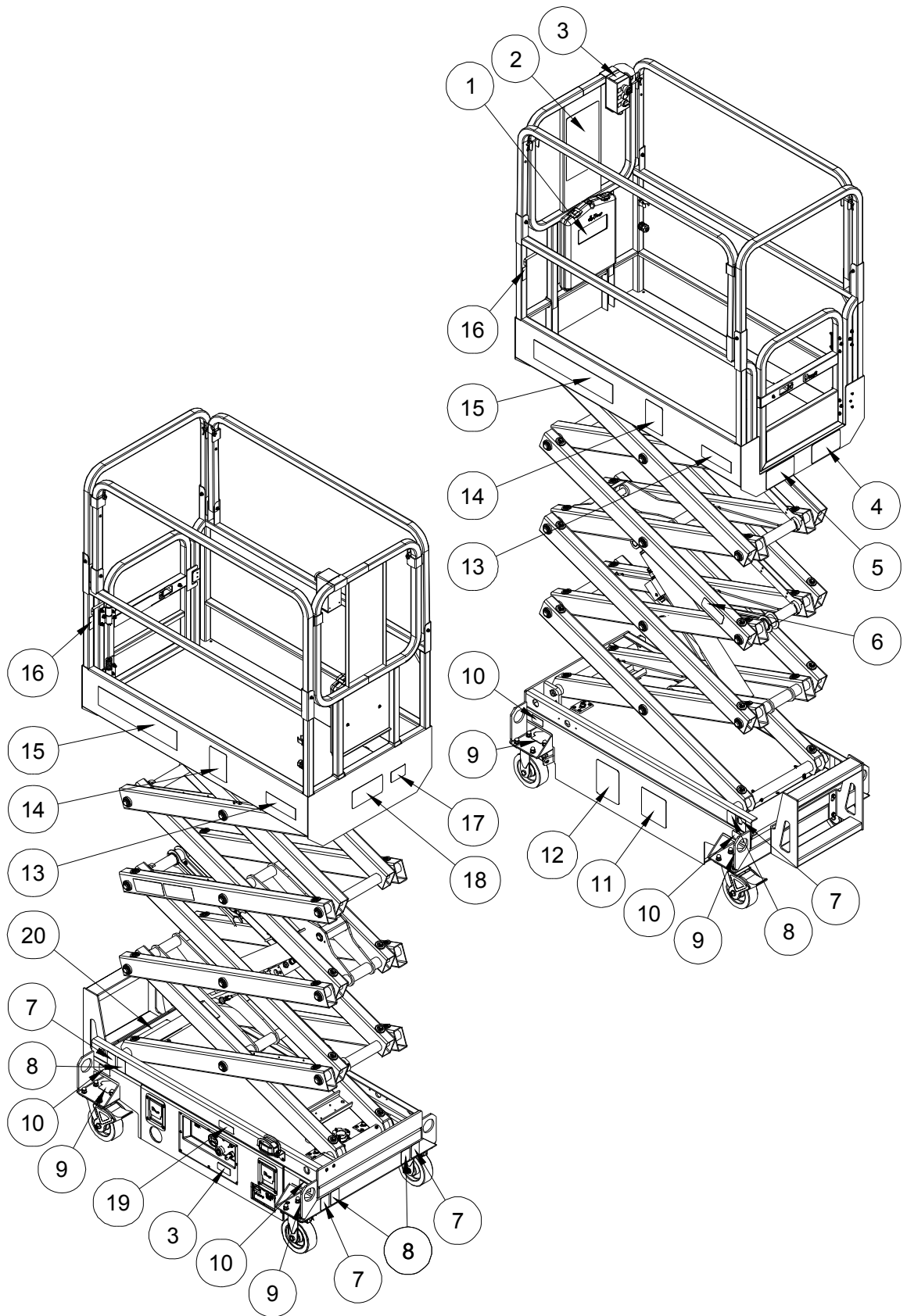


501.1 Electrical Harness

Item	Part No.	Description	Qty.
1	00004797	ECU harness	1
2		Ground control assembly (refer to 102.1)	1
3		Alarm (refer to 101.1)	1
4		Platform control box (refer to 301.1)	1
5		Rotary sensor (refer to 106.1)	1
6		Tilt sensor (refer to 106.1)	1
7		Pressure sensor (refer to 401.1)	1
8		Coil (refer to 401.1)	1
9		Beacon (refer to 106.1)	1
10		Hydraulic power unit (refer to 104.1)	1
11		DC Contactor (refer to 103.1)	1
12		100A Fuse assembly (refer to 103.1)	1
13		Battery (refer to 101.1)	1
14		Charger (refer to 101.1)	1

Section 6 Decal

601.1 Decal




601.1 Decal


Item	Part No.	Description	Qty.
1	09340001	Decal, Notice-Keep the manual with the machine	1
2	09440001	Decal, Danger-General safety rules	1
3	09340003	Decal, Instructions-Refer the operator to the instructions for use	2
4	09440005	Decal, Warning-Use indoors only	1
5	09440063	Decal, Label-Capacity 240kg	1
6	09330001	Decal, Instructions-Safety arm	2
7	09310003	Decal, Instructions-Tie down point	4
8	09310002	Decal, Instructions-Lift point	4
9	09310001	Decal, Instructions-Forklift pockets	4
10	09310058	Decal, Instructions-Maximum wheel load 330kg	4
11	09410001	Decal, Danger-Explosion/burn hazard	1
12	09410003	Decal, Warning-Inspected and operation properly	1
13	09640073	Decal, Cosmetic-SP039-E	2
14	09440066	Decal, Caution-Max. manual force 200N	2
15	09940003	Decal, Label-E-Tech	2
16	09440011	Decal, Label-Lanyard anchorage point	2
17	09540001	Decal, Label-CE	1
18	09430003	Decal, Danger-Keep away from moving parts	1
19	09310004	Decal, Instructions-Emergency lower	1
20	09210015	Nameplate, Manufacturer serial number	1

601.1 Decal

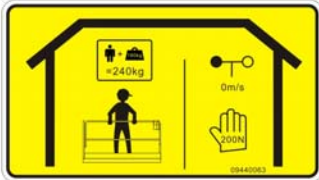
① 09340001



④ 09440005



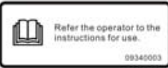
⑤ 09440063



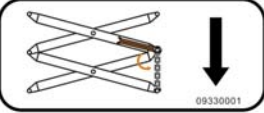
② 09440001




③ 09340003




⑥ 09330001




⑦ 09310003



⑧ 09310002



⑨ 09310001




⑩ 09310058



⑪ 09410001




⑫ 09410003




⑬ 09640073

SP039-E

⑭ 09440066




⑮ 09440011



⑯ 09310004




⑰ 09440003



⑱ 09210015



⑳ 09540001



E-Tech

CE