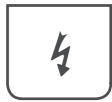




# Summit SC-DC



## ELECTRIC SELF-PROPELLED ROUGH TERRAIN SCISSOR LIFTS

### STANDARD FEATURES

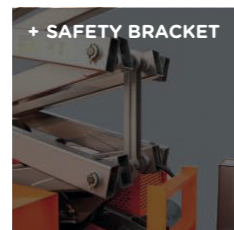
- + Proportional controls
- + Self-lock gate on platform
- + Drivable at full height
- + Automatic brakes system
- + Emergency lowering system
- + Emergency stop button
- + Cylinder holding valve
- + Onboard diagnostic system
- + Tilt sensor with alarm
- + Automatic levelling hydraulic outriggers
- + Overload sensor with alarm
- + Non-marking tyres
- + AC power to platform
- + All motion alarm
- + Horn
- + Safety brackets
- + Hour meter
- + Folding guardrails
- + Extended platform
- + Flashing beacon
- + Hydraulic oil cooler
- + Oscillating axle
- + Forklift Pockets

### OPTIONAL EXTRAS

- + Hydraulic water pump
- + Platform work lights
- + Hydraulic generator



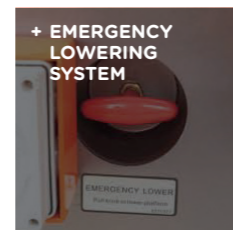
+ OSCILLATING AXLE



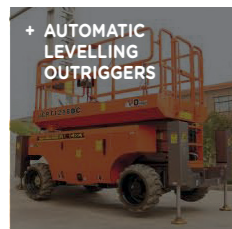
+ SAFETY BRACKET



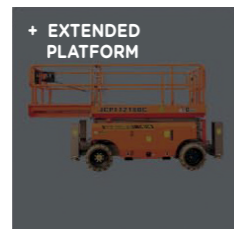
+ FOLDING GUARDRAILS



+ EMERGENCY LOWERING SYSTEM



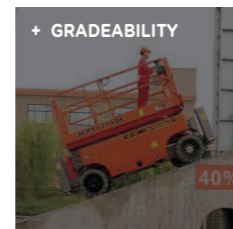
+ AUTOMATIC LEVELLING OUTRIGGERS



+ EXTENDED PLATFORM

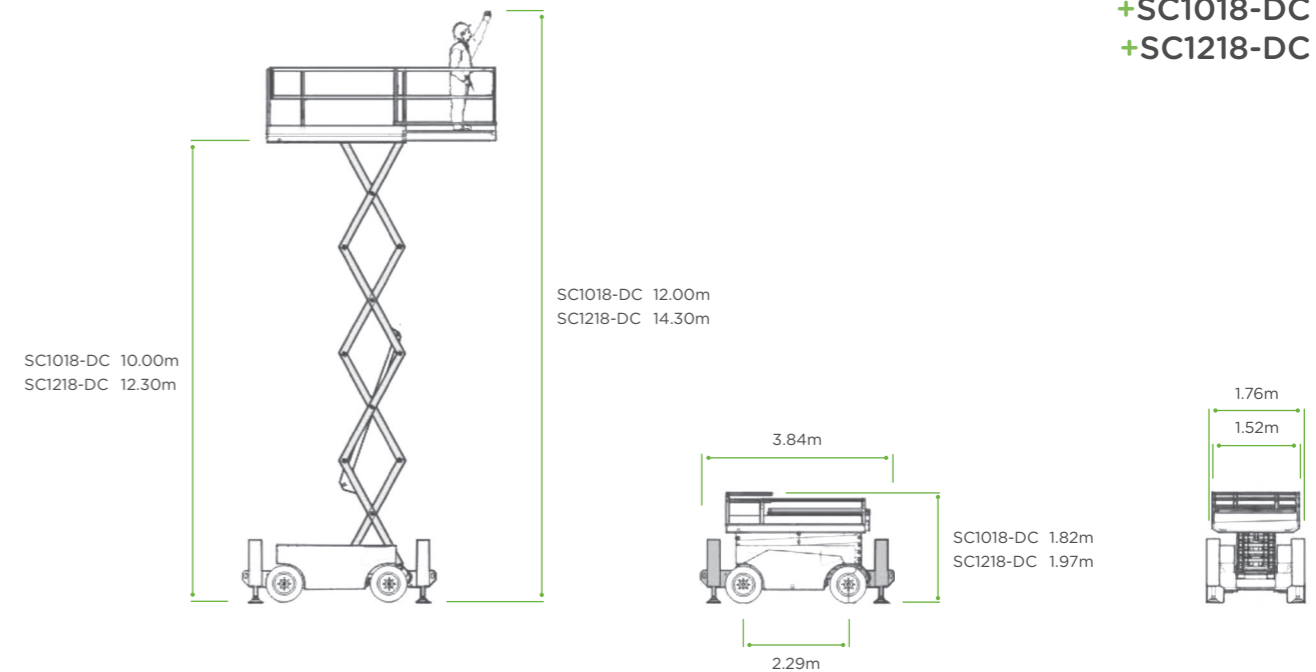


+ BATTERIES



+ GRADEABILITY

+SC1018-DC  
+SC1218-DC



	SC1018-DC	SC1218-DC
S.W.L	454kg	363kg
S.W.L ON EXTENSION	136kg	136kg
MAX. OCCUPANTS	4	3
MAX. WORKING HEIGHT	12.00m	14.30m
MAX. PLATFORM HEIGHT	10.00m	12.30m
OVERALL LENGTH	3.84m	3.84m
OVERALL WIDTH	1.76m	1.76m
OVERALL HEIGHT - STANDARD/FOLDED HANDRAILS	2.59m/1.82m	2.74m/1.97m
PLATFORM SIZE	2.88mx1.52m	2.88mx1.52m
PLATFORM EXTENSION SIZE	1.43m	1.43m
GROUND CLEARANCE	0.24m	0.24m
WHEELBASE	2.29m	2.29m
TURNING RADIUS - INSIDE	2.15m	2.15m
TURNING RADIUS - OUTSIDE	4.85m	4.85m
GRADEABILITY	40%	40%
MAXIMUM WORKING SLOPE	2°/3°	2°/3°
STOWED SPEED	6km/h	6km/h
RAISED SPEED	0.48km/h	0.48km/h
UP/DOWN SPEED	40/46sec	45/46sec
WIND RATED SPEED	12.5m/s	12.5m/s
DRIVE MOTORS	2x32VAC/3.3kW	2x32VAC/3.3kW
LIFTING MOTOR	48V/7.8kW	48V/7.8kW
BATTERIES	8x6V/315Ah	8x6V/315Ah
INTEGRATED CHARGER	48V/25A	48V/25A
HYDRAULIC TANK	71L	71L
TYRES	26x12-16.5	26x12-16.5
GROSS WEIGHT	4400kg	5150kg